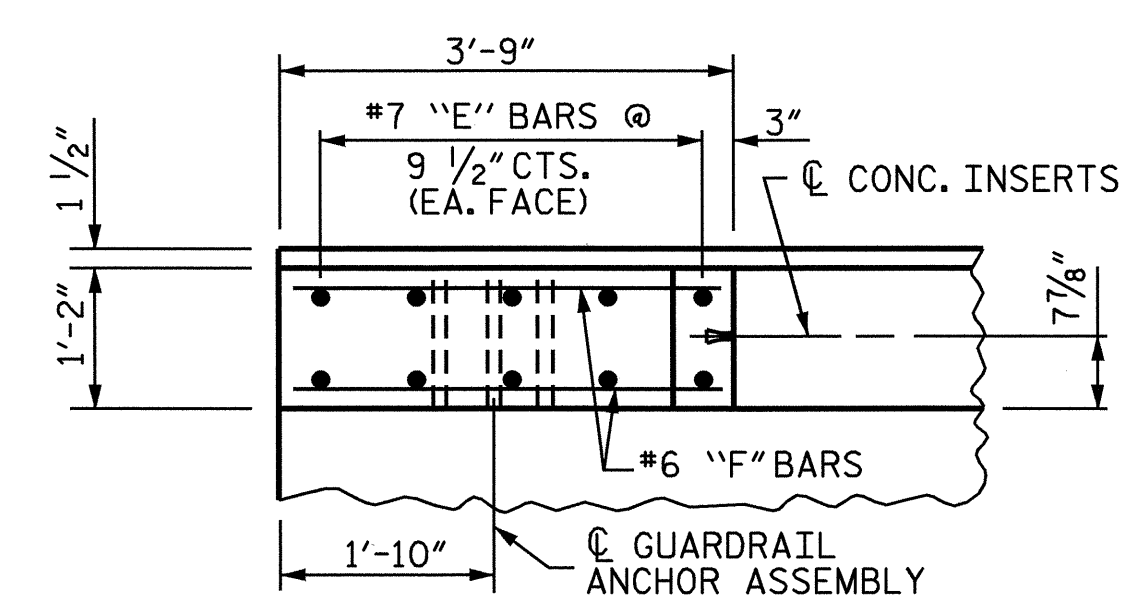
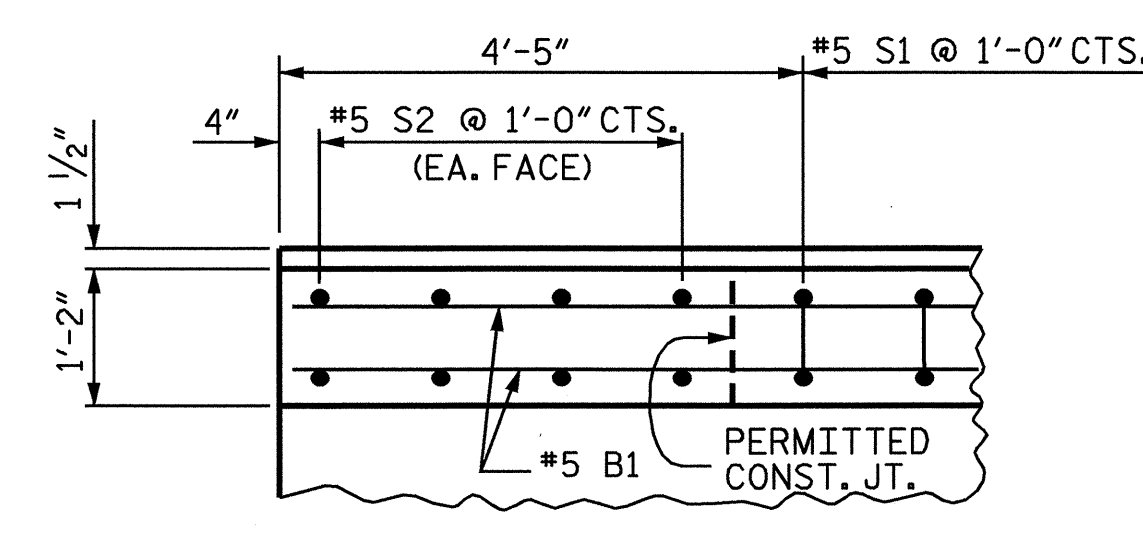


PLAN OF CONCRETE PARAPET

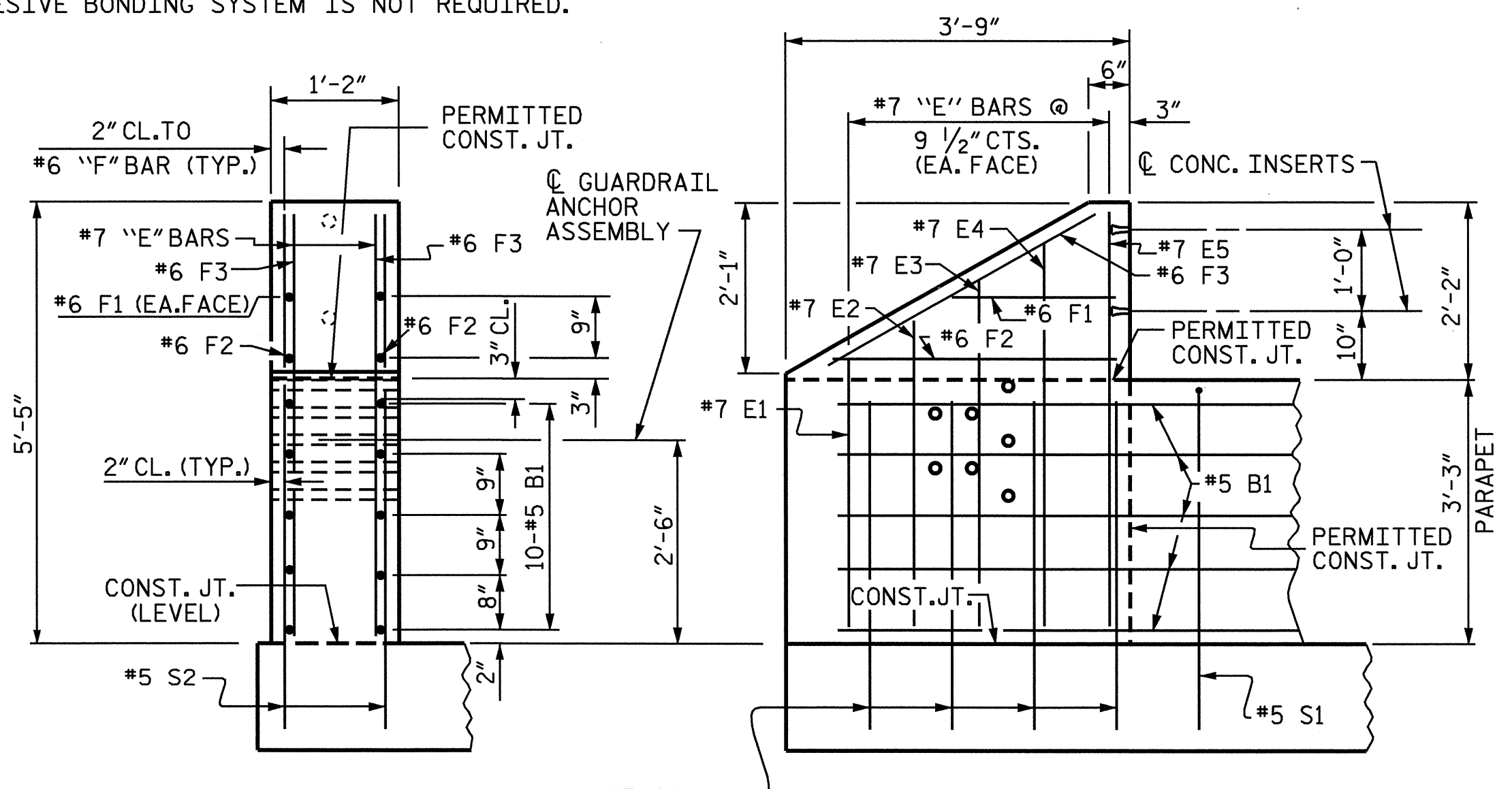
NOTES:
 FOR REINFORCING STEEL AND DETAILS FOR SIDEWALK SEE "SIDEWALK DETAILS" SHEET.
 FOR DETAILS OF CONCRETE INSERTS IN END POSTS, SEE "RAIL POST SPACINGS AND END OF RAIL DETAIL" SHEET.
 FOR DETAILS OF GUARDRAIL ANCHOR ASSEMBLIES, SEE "GUARDRAIL ANCHORAGE DETAILS FOR METAL RAILS" SHEET.
 ALL REINFORCING STEEL IN PARAPET SHALL BE EPOXY COATED.
 THE #5 S2 BARS SHALL BE INSTALLED USING AN ADHESIVE ANCHORING SYSTEM AFTER SAWING THE JOINT. FOR ADHESIVELY ANCHORED DOWELS, SEE SPECIAL PROVISIONS. THE YIELD LOAD OF THE #5 S2 BARS IS 18.6 KIPS. FIELD TESTING OF THE ADHESIVE BONDING SYSTEM IS NOT REQUIRED.



PLAN OF END POST



PLAN OF PARAPET



END VIEW ELEVATION

PARAPET AND END POST FOR TWO BAR RAIL

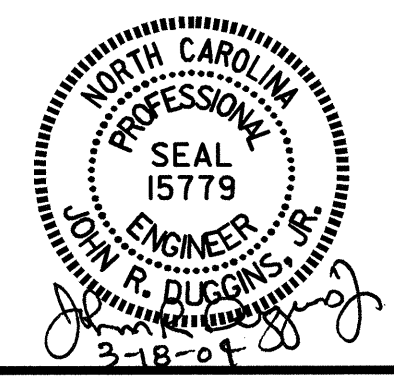
| BILL OF MATERIAL | | | | | | BAR TYPE |
|---|-----|------|------|--------|--------|------------------------------------|
| PARAPET AND FOUR END POSTS | | | | | | |
| BAR | NO. | SIZE | TYPE | LENGTH | WEIGHT | |
| *B1 | 40 | #5 | STR | 43'-0" | 1,794 | <p>BAR DIMENSION IS OUT TO OUT</p> |
| *E1 | 8 | #7 | STR | 3'-3" | 53 | |
| *E2 | 8 | #7 | STR | 3'-9" | 61 | |
| *E3 | 8 | #7 | STR | 4'-3" | 69 | |
| *E4 | 8 | #7 | STR | 4'-9" | 78 | |
| *E5 | 8 | #7 | STR | 5'-1" | 83 | |
| *F1 | 8 | #6 | STR | 1'-10" | 22 | |
| *F2 | 8 | #6 | STR | 3'-0" | 36 | |
| *F3 | 8 | #6 | STR | 3'-4" | 40 | |
| *S1 | 150 | #5 | 1 | 8'-6" | 1,330 | |
| *S2 | 32 | #5 | STR | 3'-9" | 125 | |
| * EPOXY COATED REINF. STEEL = 3,691 LBS | | | | | | |
| CLASS "AA" CONCRETE 24.1 C.Y. | | | | | | |
| CONCRETE PARAPET 165.83 L.F. | | | | | | |
| * THESE BARS ARE EPOXY COATED | | | | | | |

PROJECT NO. B-3607
ASHE COUNTY
 STATION: 10+87.50 -L-

STATE OF NORTH CAROLINA
 DEPARTMENT OF TRANSPORTATION
 RALEIGH

**SUPERSTRUCTURE
 CONCRETE PARAPET
 DETAILS**

| REVISIONS | | | | | | SHEET NO. |
|-----------|-----|-------|-----|-----|-------|--------------|
| NO. | BY: | DATE: | NO. | BY: | DATE: | S-10 |
| 1 | | | 3 | | | TOTAL SHEETS |
| 2 | | | 4 | | | 32 |



DRAWN BY : D. HODGE DATE : 10/03
 CHECKED BY : J. LAMBERT DATE : 11/03