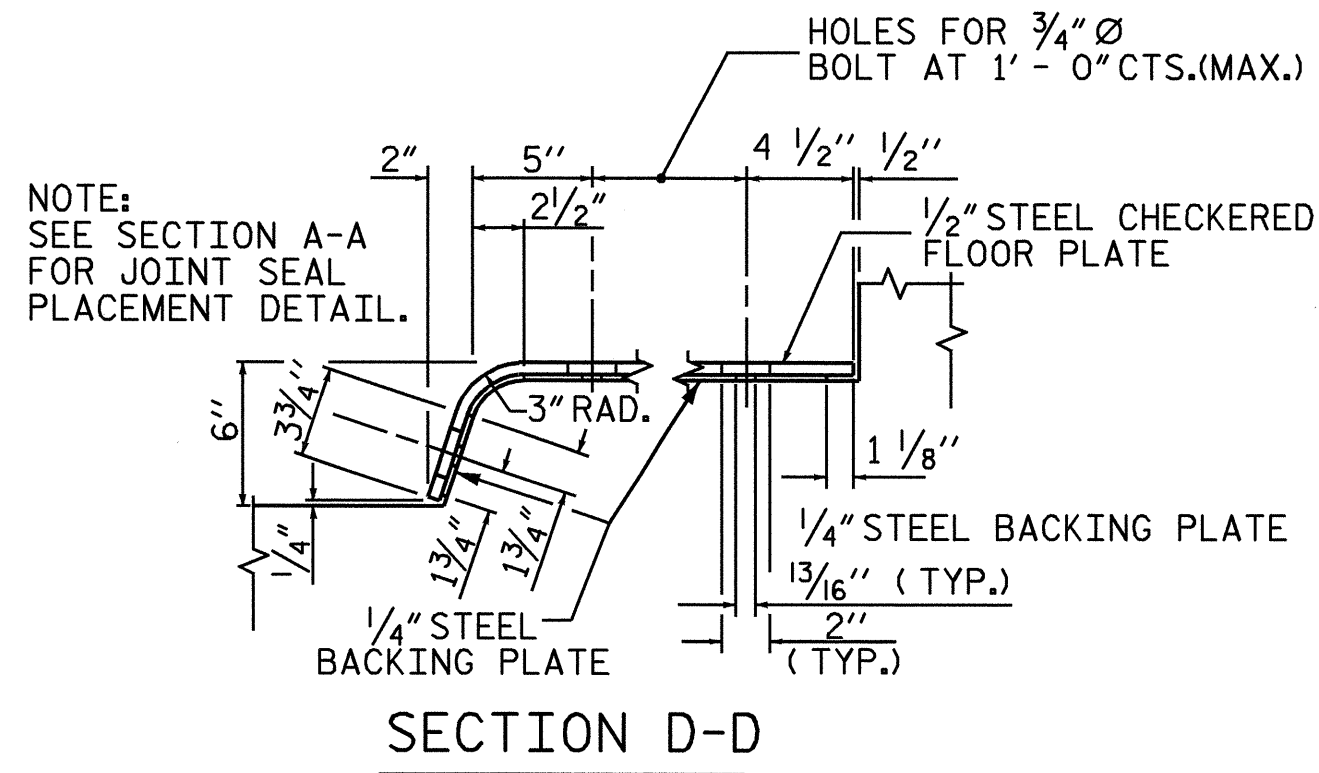


NOTE:
BOLTS ARE TO BE PLACED ON
APPROACHING TRAFFIC SIDE
OF JOINT.

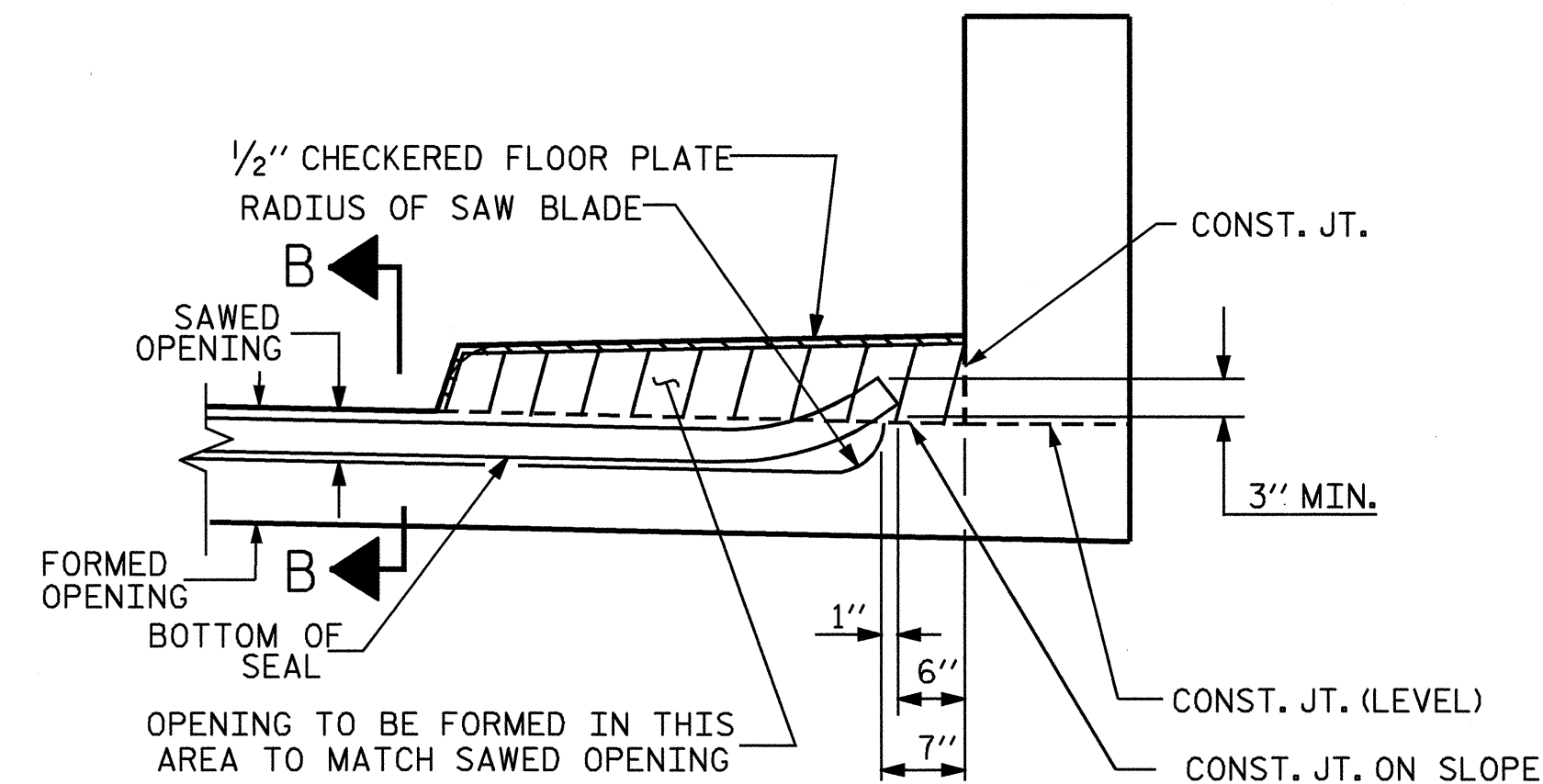
PLAN OF EVAZOTE JOINT SEAL WITH COVER

SIDEWALK WITH EVAZOTE JOINT SEAL

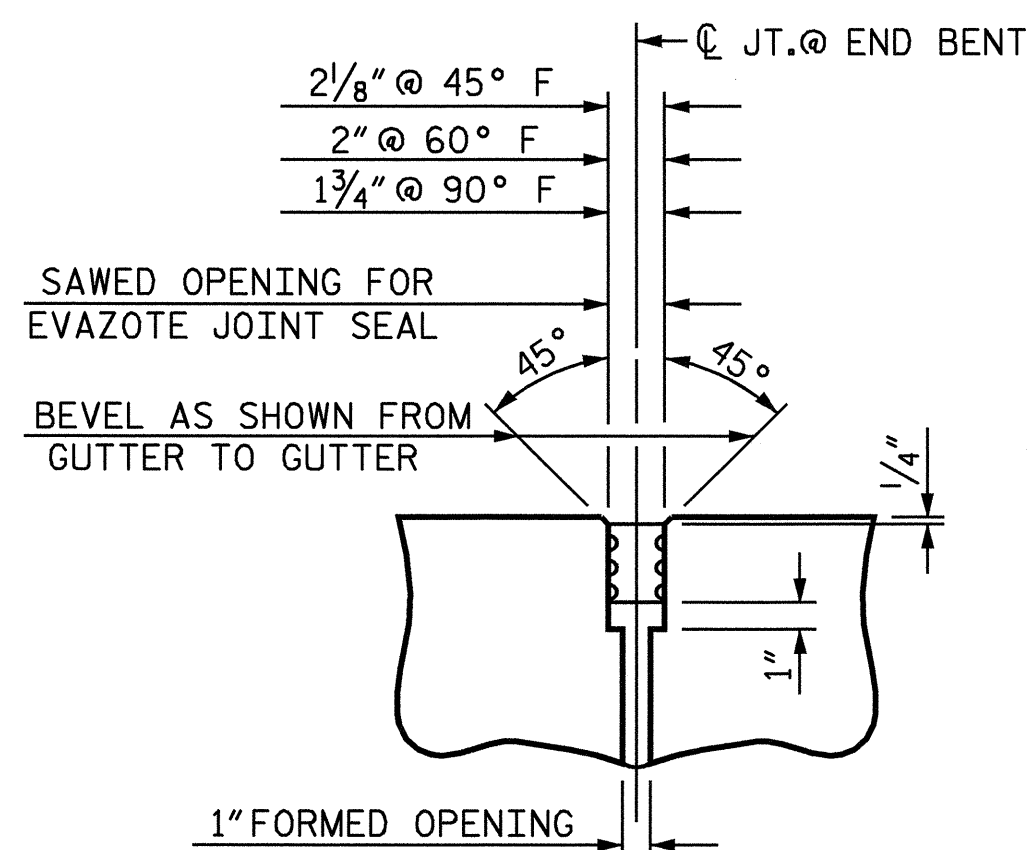


NOTE:
SEE SECTION A-A
FOR JOINT SEAL
PLACEMENT DETAIL.

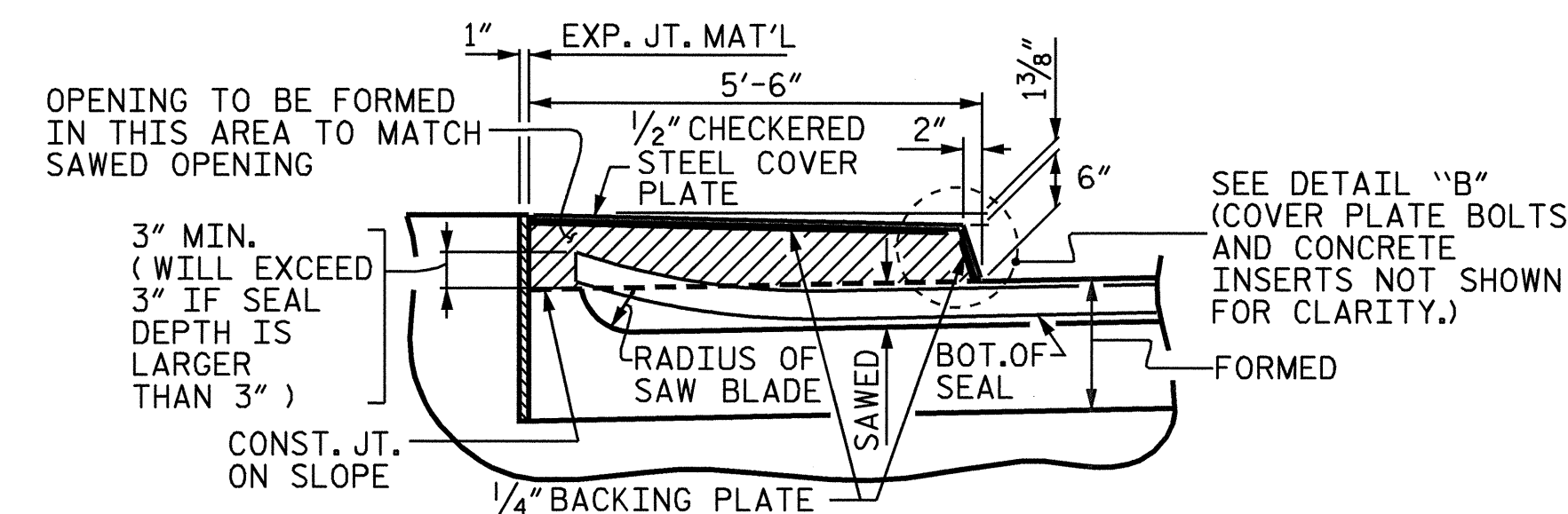
SECTION D-D



SECTION A-A

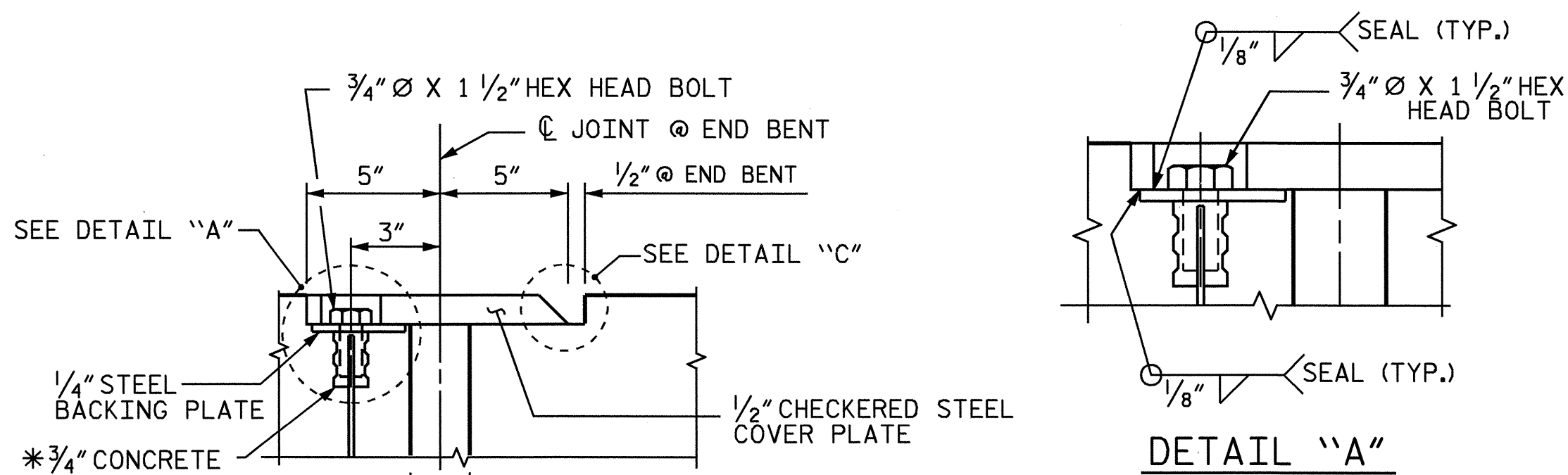


SECTION E-E
EVAZOTE JOINT SEAL

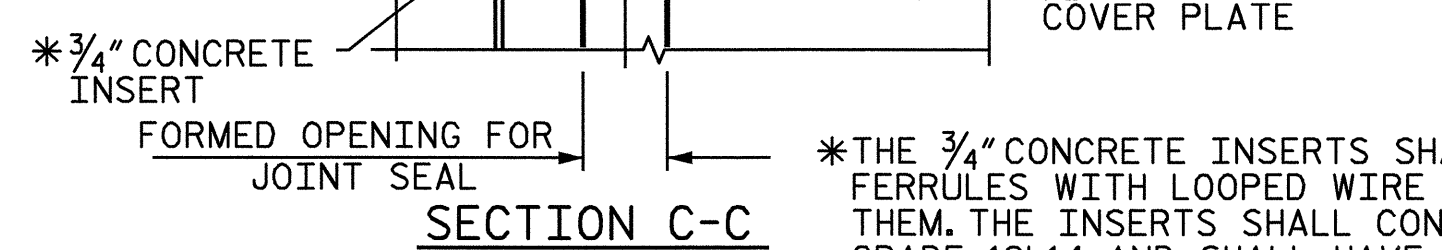


SECTION B-B

JOINT SEAL DETAILS @ END BENT

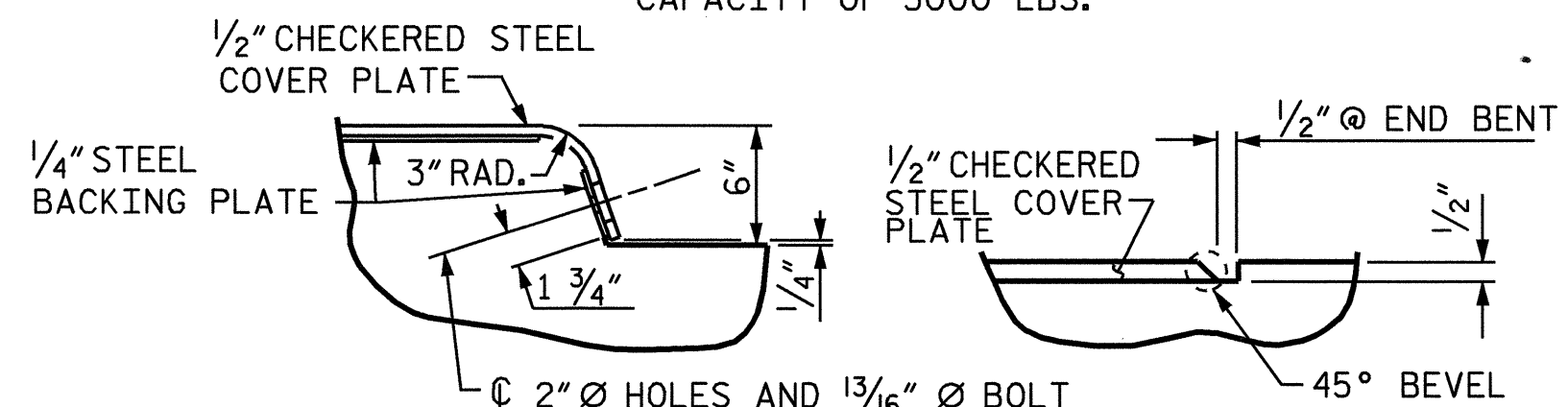


DETAIL "A"



SECTION C-C

*THE 3/4" CONCRETE INSERTS SHALL BE CLOSED-END FERRULES WITH LOOPED WIRE STRUTS ATTACHED TO THEM. THE INSERTS SHALL CONFORM TO AASHTO M169, GRADE 12L14 AND SHALL HAVE A TENSILE WORKING LOAD CAPACITY OF 3000 LBS.

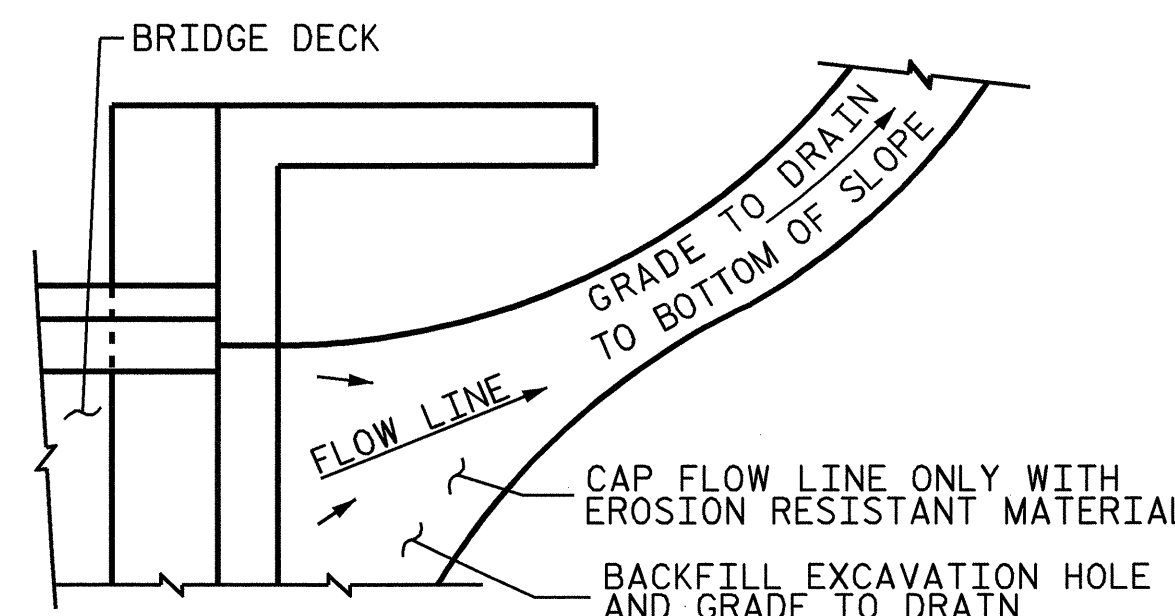


DETAIL "B"

DETAIL "C"

JOINT SEAL DETAILS @ END BENT

(FOR SIDEWALK)



NOTE: IF THE APPROACH SLAB IS NOT CONSTRUCTED IMMEDIATELY AFTER THE BACKFILLING OF THE END BENT EXCAVATION, GRADE TO DRAIN TO THE BOTTOM OF THE SLOPE AND PROVIDE EROSION RESISTANT MATERIAL, SUCH AS FIBERGLASS ROVING OR AS DIRECTED BY THE ENGINEER TO PREVENT SOIL EROSION AND TO PROTECT THE AREA ADJACENT TO THE STRUCTURE. THE CONTRACTOR WILL BE REQUIRED TO REMOVE THESE MATERIALS PRIOR TO CONSTRUCTION OF THE APPROACH SLAB.

TEMPORARY DRAINAGE DETAIL

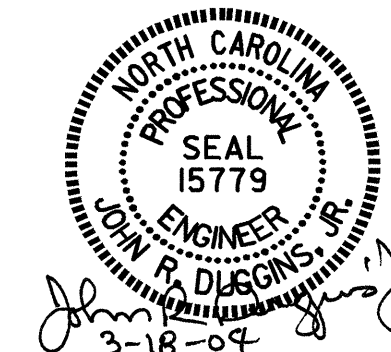
PROJECT NO. B-3607
ASHE COUNTY
 STATION: 10+87.50 -L-

SHEET 2 OF 3

STATE OF NORTH CAROLINA
 DEPARTMENT OF TRANSPORTATION
 RALEIGH

STANDARD
 BRIDGE APPROACH
 SLAB DETAILS

ASSEMBLED BY : D. HODGE	DATE : 2/2004
CHECKED BY : J. LAMBERT	DATE : 2/2004
DRAWN BY : FCJ 11/88	REV. 8/16/99 MAB/LES
CHECKED BY : ARB 11/88	REV. 10/17/00 RWW/LES
	REV. 5/7/03 RWW/JTE



REVISIONS					SHEET NO.
NO.	BY:	DATE:	NO.	DATE:	S- 28
1			3		TOTAL SHEETS
2			4		32

STD. NO. BAS10