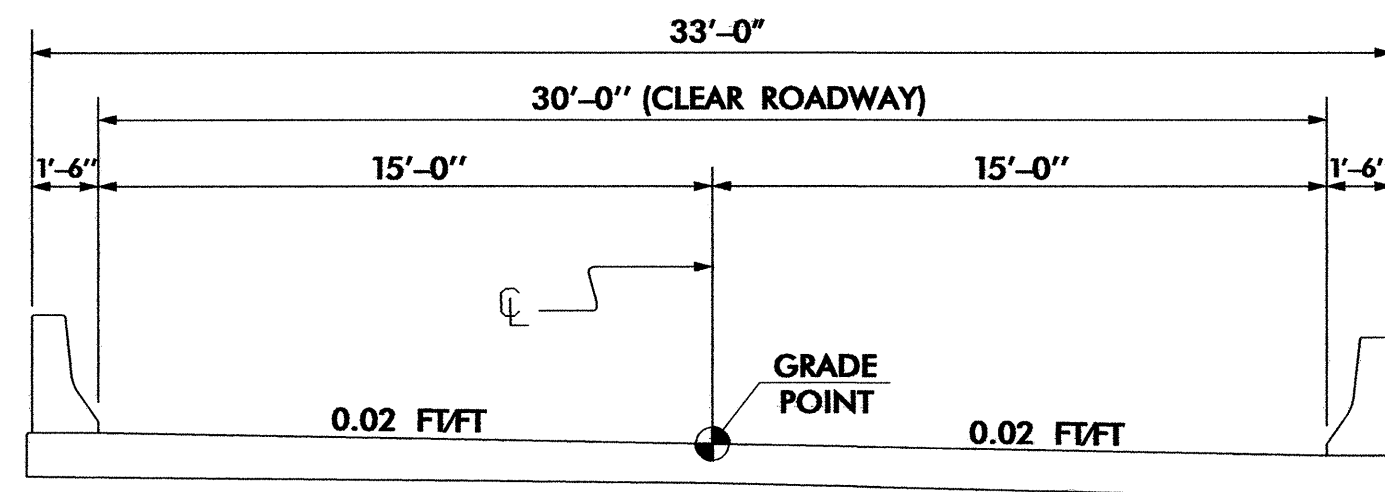


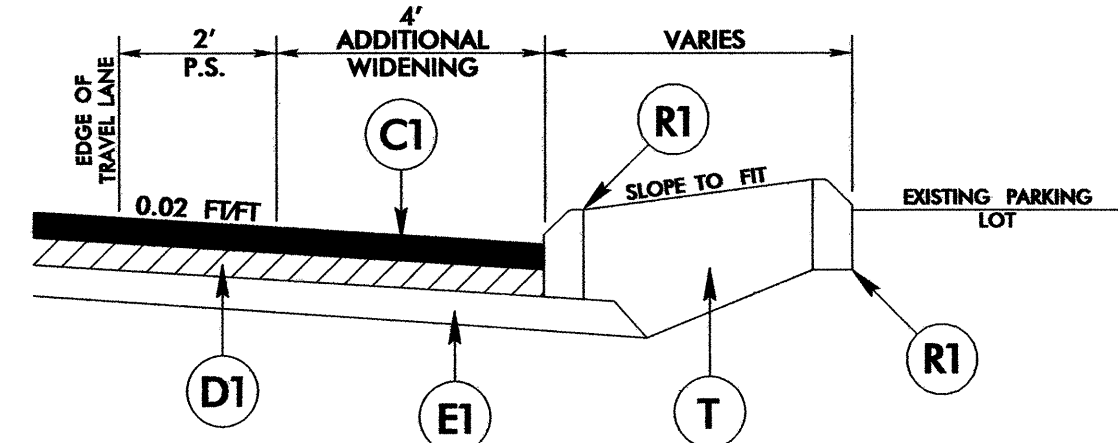
PROPOSED BRIDGE TYPICAL SECTION

-L- STA. 235+68.00 TO -L- STA. 237+78.00



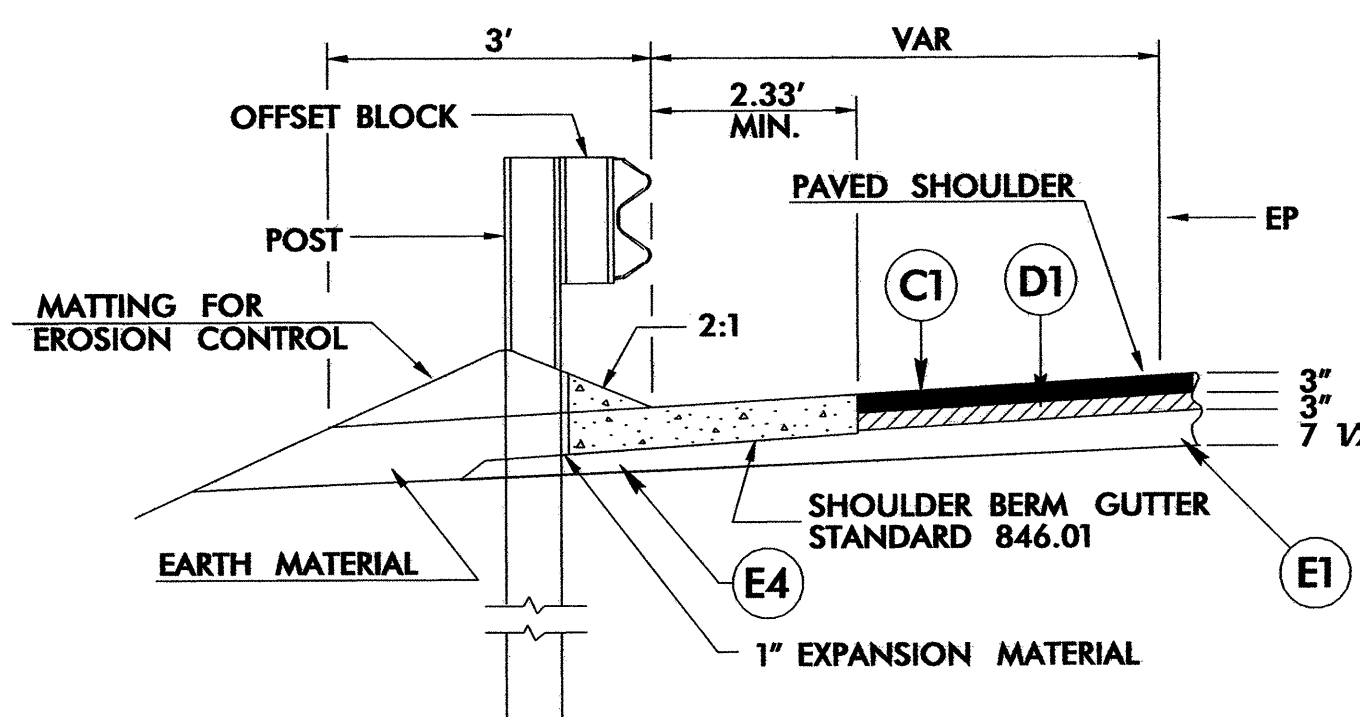
TEMPORARY BRIDGE TYPICAL SECTION

-DETA- STA. 18+10.00 TO -DETA- STA. 19+30.00



CHANNELIZATION DETAIL

USE CHANNELIZATION IN CONJUNCTION WITH TYPICAL SECTIONS NO. 1 & 2 AT LOCATIONS AS SHOWN ON PLANS

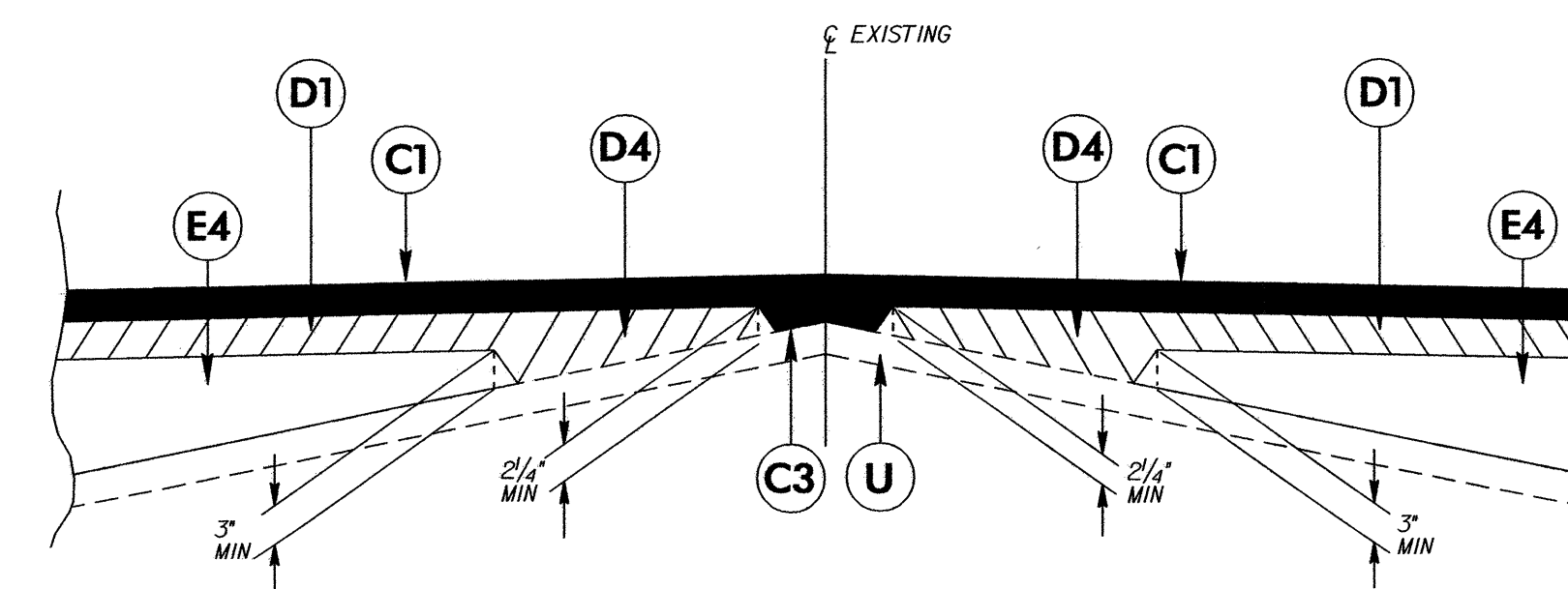


SHOULDER BERM GUTTER DETAIL

- L- STA. 24+50.00 TO -L- STA. 26+75.00 LT
- L- STA. 24+62.00 TO -L- STA. 27+75.00 RT
- L- STA. 50+37.00 TO -L- STA. 53+13.00 LT
- L- STA. 61+50.00 TO -L- STA. 64+75.00 LT
- L- STA. 63+50.00 TO -L- STA. 67+00.00 RT
- L- STA. 101+87.00 TO -L- STA. 103+50.00 LT
- L- STA. 102+50.00 TO -L- STA. 104+63.00 RT
- L- STA. 136+00.00 TO -L- STA. 138+00.00 LT
- L- STA. 136+00.00 TO -L- STA. 138+00.00 RT
- L- STA. 145+25.00 TO -L- STA. 148+50.00 RT
- L- STA. 147+37.00 TO -L- STA. 149+63.00 LT
- LREV- STA. 187+25.00 TO -LREV- STA. 189+85.94 LT
- L- STA. 189+85.94 TO -L- STA. 190+25.00 LT
- L- STA. 231+22.00 TO -L- STA. 235+68.00 LT
- L- STA. 237+78.00 TO -L- STA. 240+60.00 LT
- L- STA. 232+97.00 TO -L- STA. 235+68.00 RT
- L- STA. 237+78.00 TO -L- STA. 238+60.00 RT
- L- STA. 247+50.00 TO -L- STA. 254+38.00 RT
- L- STA. 248+50.00 TO -L- STA. 254+50.00 LT

PAVEMENT SCHEDULE	
C1	PROP. APPROX. 3" ASPHALT CONCRETE SURFACE COURSE, TYPE S9.5C, AT AN AVERAGE RATE OF 168 LBS. PER SQ. YD. IN EACH OF TWO LAYERS.
C2	PROP. APPROX. 3" ASPHALT CONCRETE SURFACE COURSE, TYPE S9.5B, AT AN AVERAGE RATE OF 168 LBS. PER SQ. YD. IN EACH OF TWO LAYERS.
C3	PROP. VAR. DEPTH ASPHALT CONCRETE SURFACE COURSE, TYPE S9.5C, AT AN AVERAGE RATE OF 112 LBS. PER SQ. YD. PER 1" DEPTH. TO BE PLACED IN LAYERS NOT TO EXCEED 1 1/2" IN DEPTH.
C4	PROP. VAR. DEPTH ASPHALT CONCRETE SURFACE COURSE, TYPE S9.5B, AT AN AVERAGE RATE OF 112 LBS. PER SQ. YD. PER 1" DEPTH. TO BE PLACED IN LAYERS NOT TO EXCEED 1 1/2" IN DEPTH.
D1	PROP. APPROX. 3" ASPHALT CONCRETE INTERMEDIATE COURSE, TYPE I19.0C, AT AN AVERAGE RATE OF 342 LBS. PER SQ. YD.
D2	PROP. APPROX. 2 1/2" ASPHALT CONCRETE INTERMEDIATE COURSE, TYPE I19.0B, AT AN AVERAGE RATE OF 285 LBS. PER SQ. YD.
D3	PROP. APPROX. 2 1/2" ASPHALT CONCRETE INTERMEDIATE COURSE, TYPE I19.0C, AT AN AVERAGE RATE OF 285 LBS. PER SQ. YD.
D4	PROP. VAR. DEPTH ASPHALT CONCRETE INTERMEDIATE COURSE, TYPE I19.0C, AT AN AVERAGE RATE OF 114 LBS. PER SQ. YD. PER 1" DEPTH. TO BE PLACED IN LAYERS NOT LESS THAN 2 1/4" IN DEPTH OR GREATER THAN 4" IN DEPTH.
D5	PROP. VAR. DEPTH ASPHALT CONCRETE INTERMEDIATE COURSE, TYPE I19.0B, AT AN AVERAGE RATE OF 114 LBS. PER SQ. YD. PER 1" DEPTH. TO BE PLACED IN LAYERS NOT LESS THAN 2 1/4" IN DEPTH OR GREATER THAN 4" IN DEPTH.
E1	PROP. APPROX. 7 1/2" ASPHALT CONCRETE BASE COURSE, TYPE B25.0C, AT AN AVERAGE RATE OF 428 LBS. PER SQ. YD. IN EACH OF TWO LAYERS.
E2	PROP. APPROX. 4" ASPHALT CONCRETE BASE COURSE, TYPE B25.0B, AT AN AVERAGE RATE OF 456 LBS. PER SQ. YD.
E3	PROP. APPROX. 5" ASPHALT CONCRETE BASE COURSE, TYPE B25.0B, AT AN AVERAGE RATE OF 570 LBS. PER SQ. YD.
E4	PROP. VAR. DEPTH ASPHALT CONCRETE BASE COURSE, TYPE B25.0C, AT AN AVERAGE RATE OF 114 LBS. PER SQ. YD. PER 1" DEPTH. TO BE PLACED IN LAYERS NOT LESS THAN 3" IN DEPTH OR GREATER THAN 5 1/2" IN DEPTH.
E5	PROP. VAR. DEPTH ASPHALT CONCRETE BASE COURSE, TYPE B25.0B, AT AN AVERAGE RATE OF 114 LBS. PER SQ. YD. PER 1" DEPTH. TO BE PLACED IN LAYERS NOT LESS THAN 3" IN DEPTH OR GREATER THAN 5 1/2" IN DEPTH.
J1	PROP. 6" AGGREGATE BASE COURSE.
J2	PROP. 8" AGGREGATE BASE COURSE.
R1	8" x 18" CONCRETE CURB.
T	EARTH MATERIAL.
U	EXISTING PAVEMENT.
W	VARIABLE DEPTH ASPHALT PAVEMENT (SEE STANDARD WEDGING DETAIL)

NOTE: PAVEMENT EDGE SLOPES ARE 1:1 UNLESS SHOWN OTHERWISE.



DETAIL SHOWING METHOD OF WEDGING

PROJECT REFERENCE NO. R-3427	SHEET NO. 2-B
RW SHEET NO.	
ROADWAY DESIGN ENGINEER	HYDRAULICS ENGINEER

** DESIGN EXCEPTION IS REQUIRED FOR SHOULDER & DITCH SECTION