

NOTES:

EPOXY BONDING SYSTEM SHALL MEET THE REQUIREMENTS OF SECTION 1081 OF THE STANDARD SPECIFICATIONS AND SHALL BE INSTALLED IN ACCORDANCE WITH THE MANUFACTURERS RECOMMENDATIONS.

CLASS 'B' CONCRETE REQUIRED.

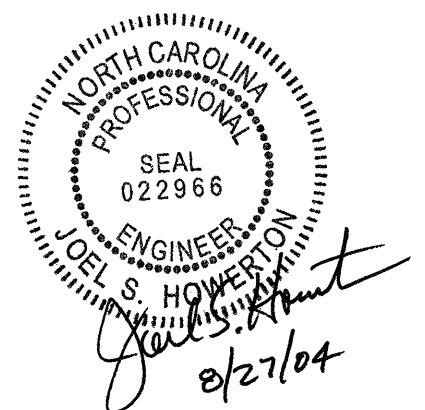
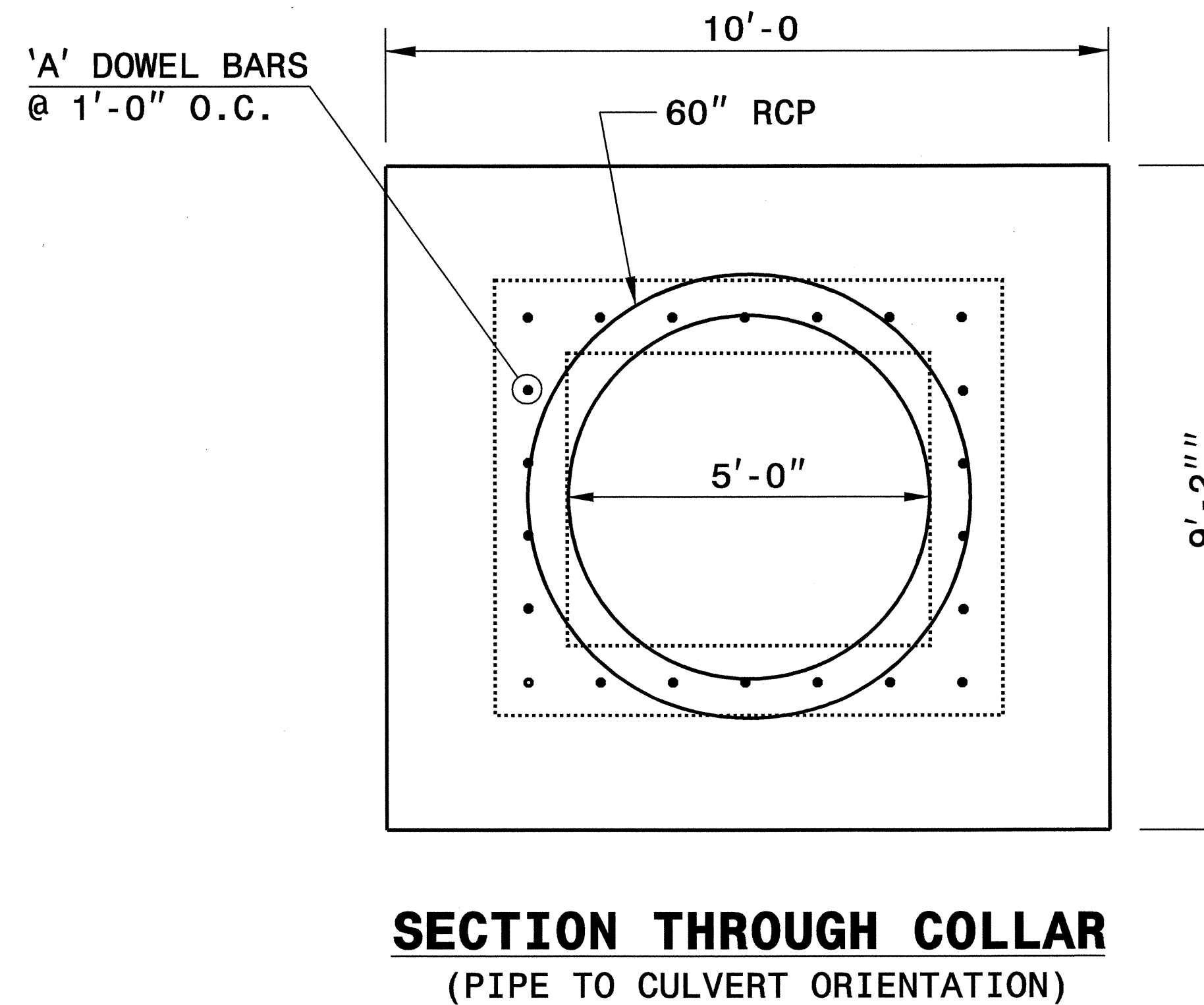
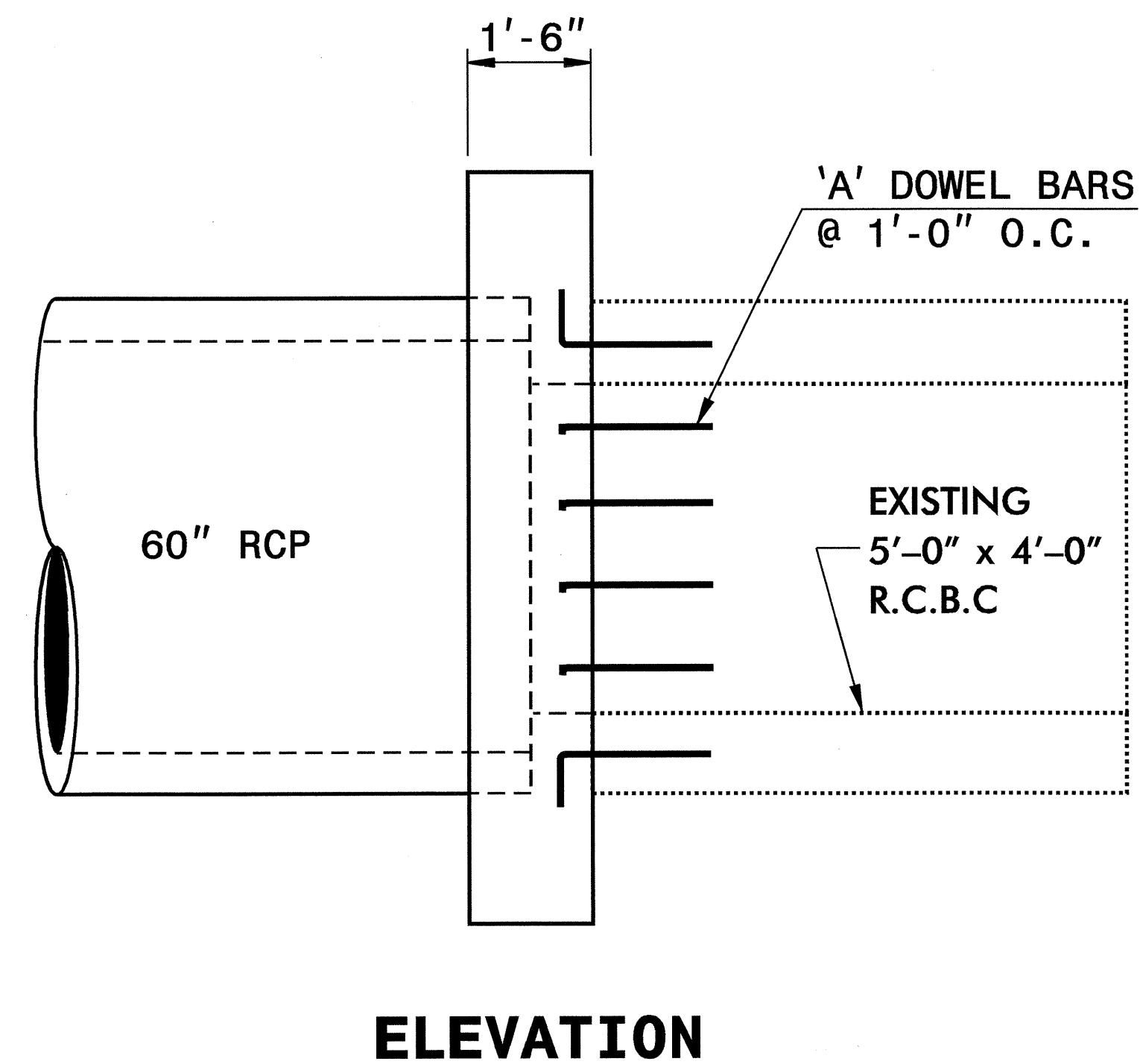
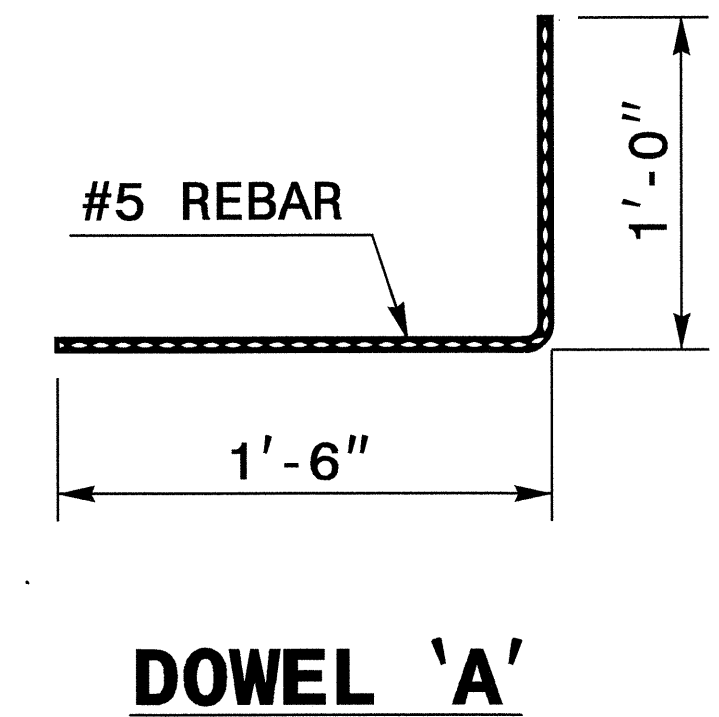
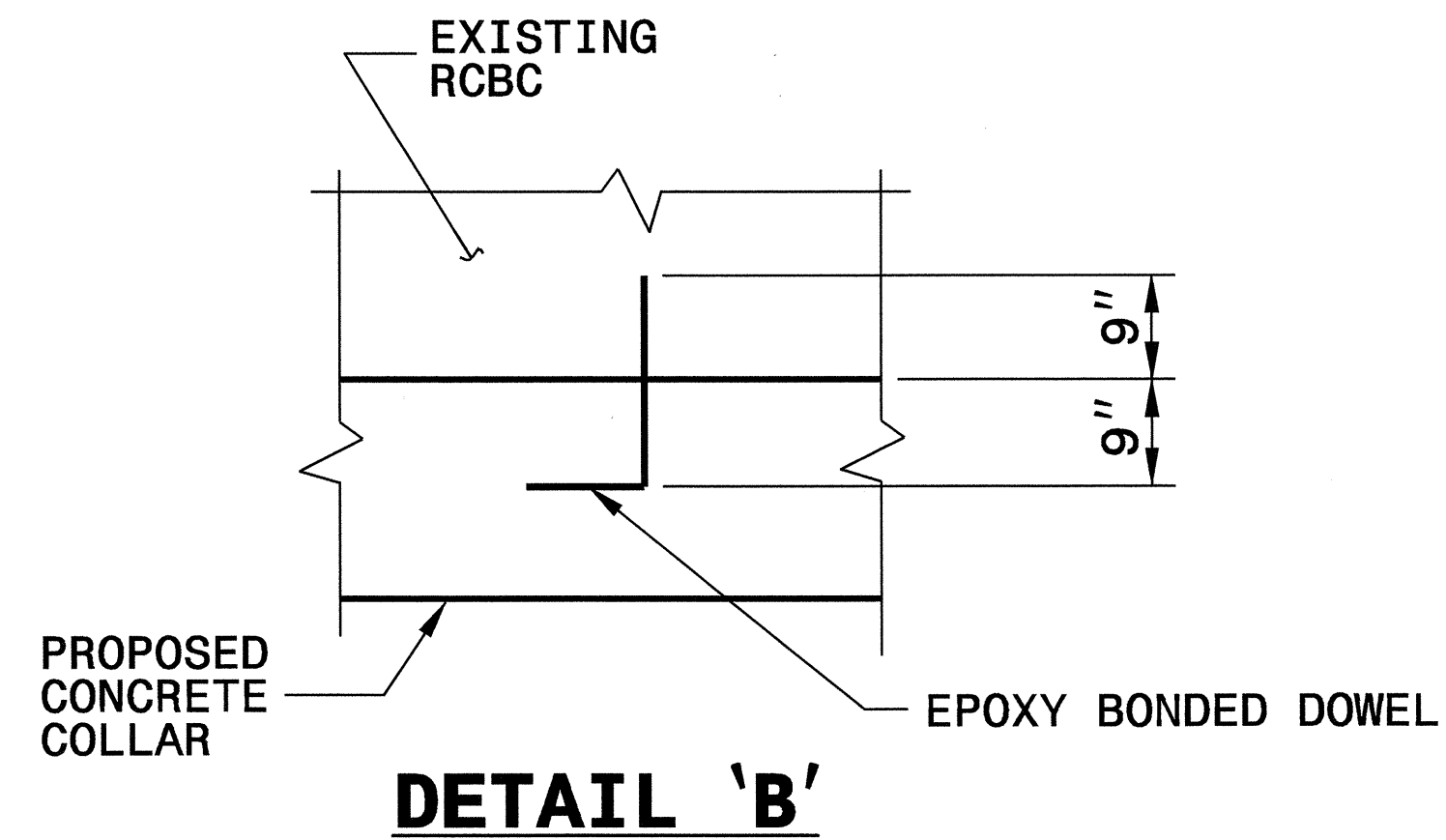
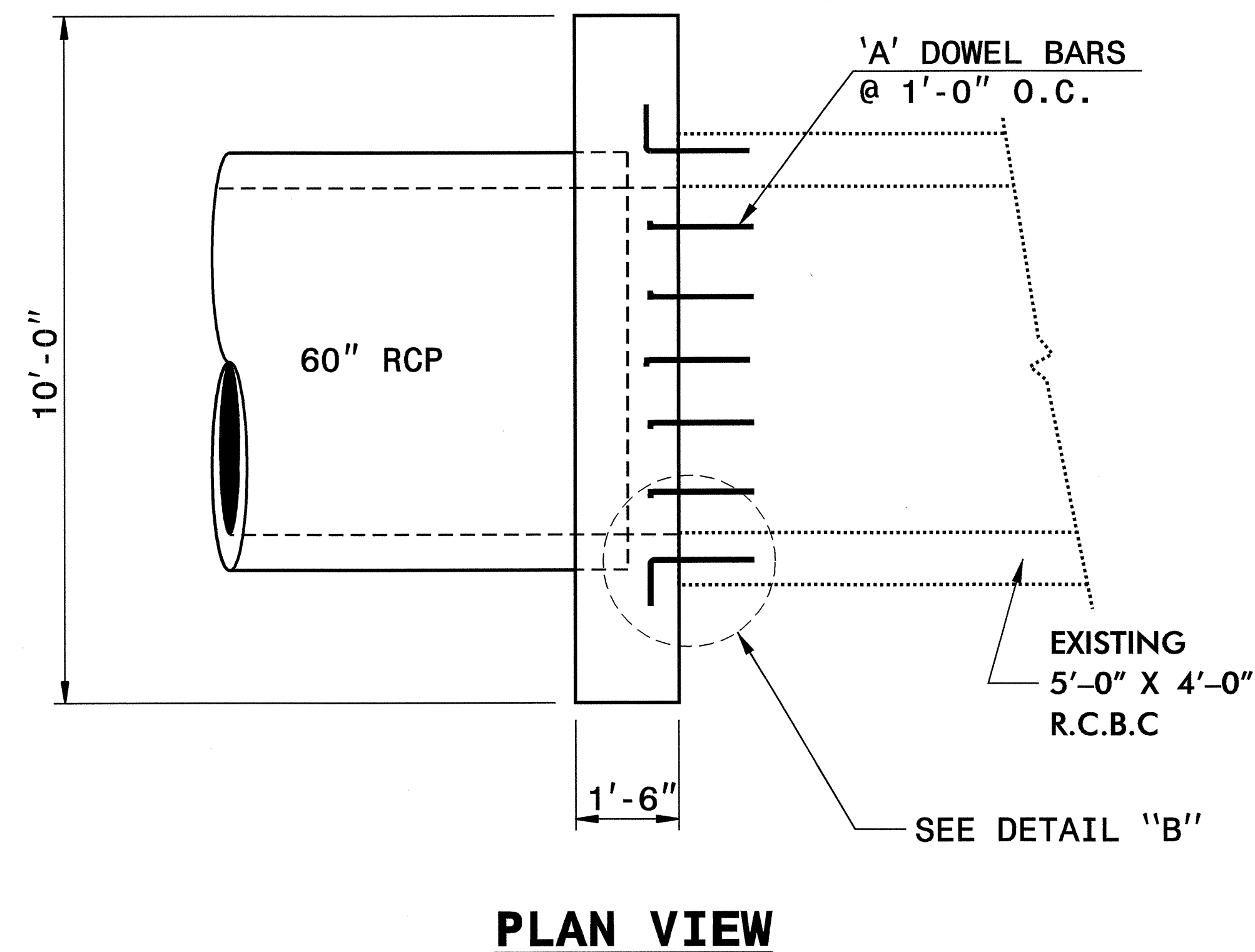
ALL DIMENSIONS SHALL BE VERIFIED IN THE FIELD AND MAY BE ADJUSTED AS DIRECTED BY THE ENGINEER.

ALL EXPOSED CORNERS SHALL BE CHAMFERED 1".

DOWEL BARS SHALL BE INSTALLED AT VARIOUS ANGLES.

BILL OF MATERIAL

BAR	NO.	SIZE	LENGTH	WEIGHT
A	22	#5	2'-6"	57
TOTAL REINF. STEEL (LBS.)				57
CLASS "B" CONC. (C.Y.)				5.1



STA.103+09 -L- LT. & RT.

**DESIGN SERVICES UNIT
STANDARDS AND SPECIAL DESIGN**
Office 919-250-4128 FAX 919-250-4119

**DETAIL OF COLLAR
CONNECTING EXISTING
RCBC TO 60" RCP**

ORIGINAL BY: T Spell DATE: 4-15-04
 MODIFIED BY: DATE:
 CHECKED BY: DATE: 7/2/04
 FILE SPEC.: w:\spell\stand\collar_r3427.dgn

5/14/04
 19-JUL-2004 14:09
 W:\spell\stand\collar_r3427.dgn
 T Spell
 05203655