

NOTES

FOR -L- PROFILE SEE SHEETS 43 & 44
ALL DRIVEWAY RADII ARE 20' UNLESS NOTED

PI Sta 154+45.09
Δ = 19° 34' 26.1" (RT)
D = 0° 29' 53.6"
L = 3,928.74'
T = 1,983.70'
R = 11,500.00'
SE = NC

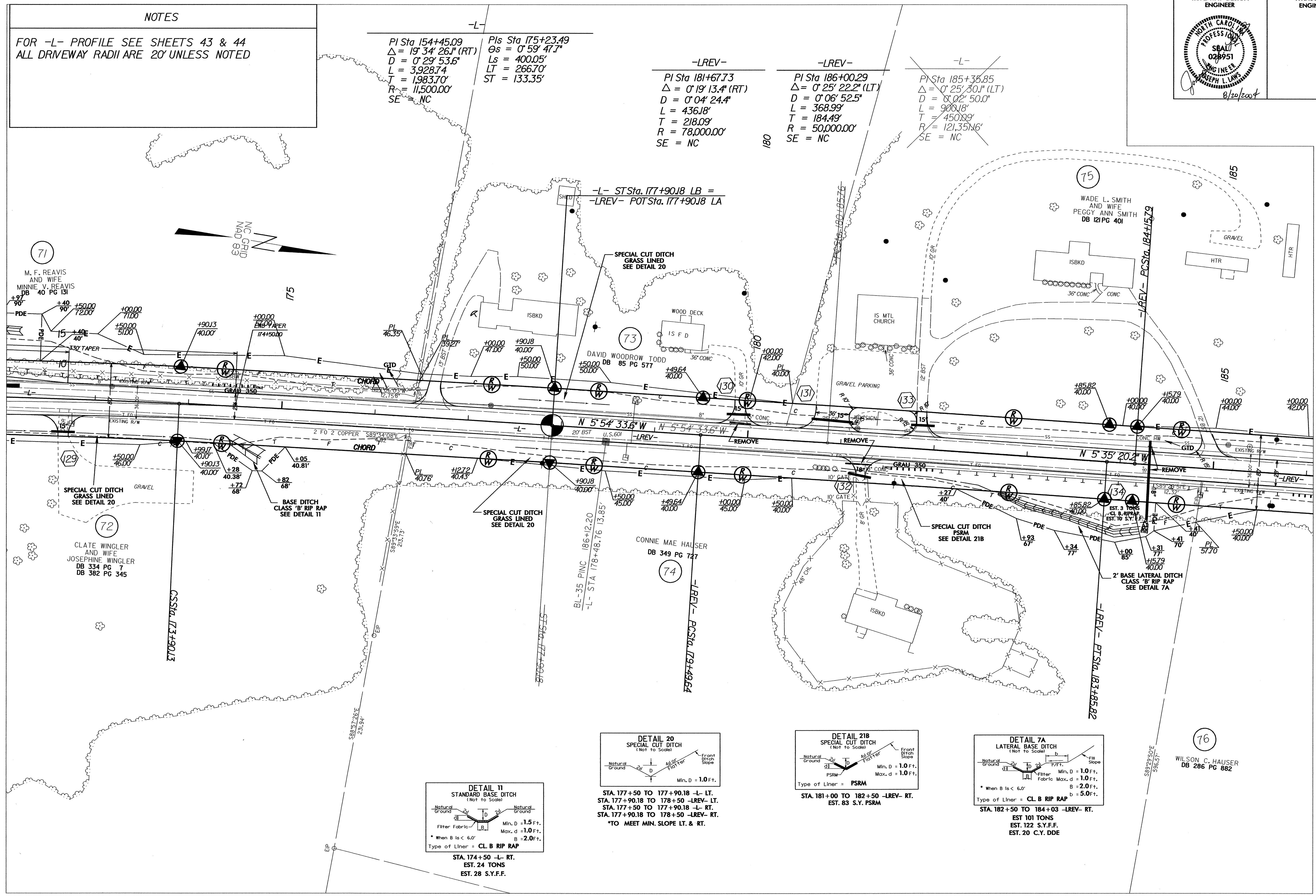
PI Sta 175+23.49
Δs = 0° 59' 47.7"
Ls = 400.05'
LT = 266.70'
ST = 133.35'

-LREV-
PI Sta 181+67.73
Δ = 0° 19' 13.4" (RT)
D = 0° 04' 24.4"
L = 436.18'
T = 218.09'
R = 78,000.00'
SE = NC

-LREV-
PI Sta 186+00.29
Δ = 0° 25' 22.2" (LT)
D = 0° 06' 52.5"
L = 368.99'
T = 184.49'
R = 50,000.00'
SE = NC

-L-
PI Sta 185+38.85
Δ = 0° 25' 30.1" (LT)
D = 0° 02' 50.0"
L = 908.18'
T = 450.89'
R = 121,350.00'
SE = NC

MATCHLINE ** SEE SHEET 15 **



MATCHLINE ** SEE SHEET 17 **

