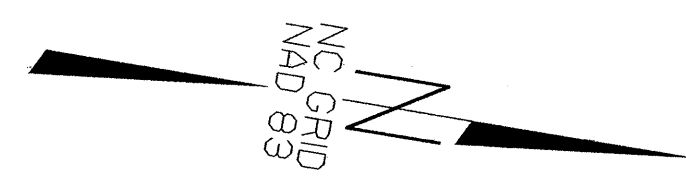


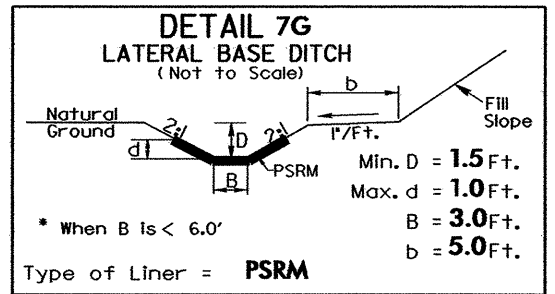
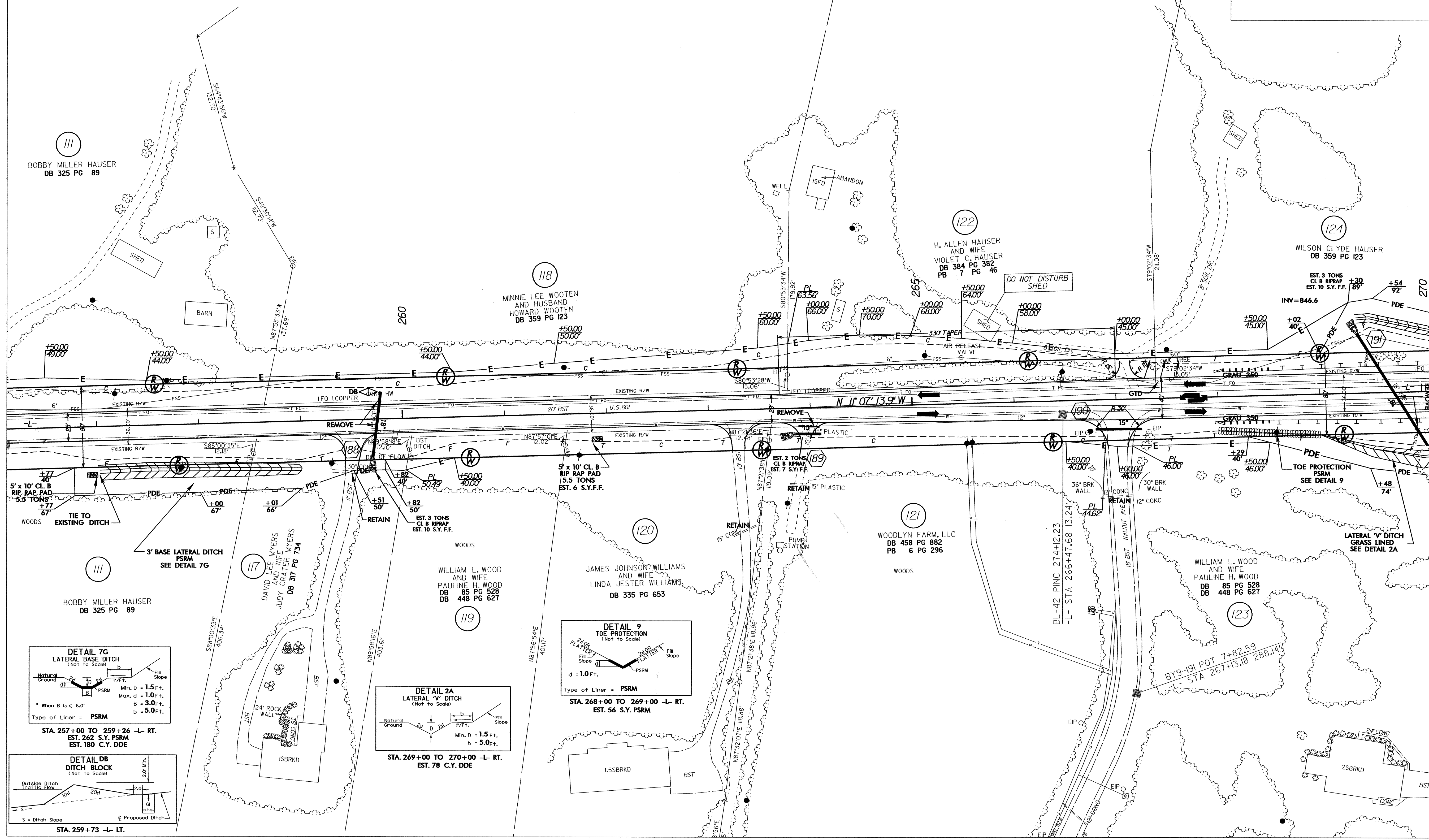
**NOTES**

FOR -L- PROFILE SEE SHEETS 50 & 51  
ALL DRIVEWAY RADII ARE 20' UNLESS NOTED

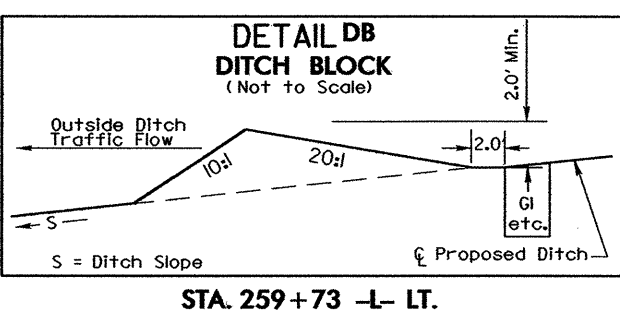


MATCHLINE \*\* SEE SHEET 21 \*\*

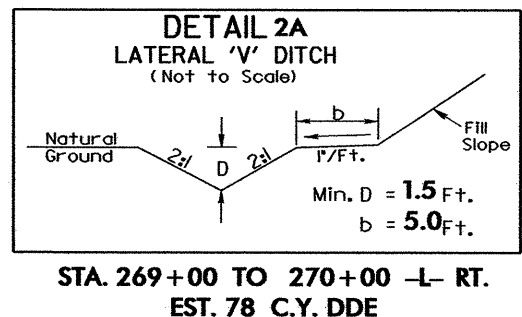
MATCHLINE \*\* SEE SHEET 23 \*\*



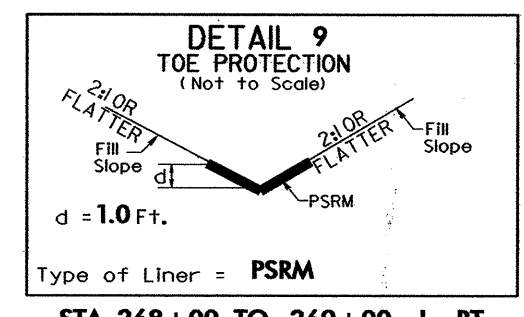
STA. 257+00 TO 259+26 -L- RT.  
EST. 262 S.Y. PSRM  
EST. 180 C.Y. DDE



STA. 259+73 -L- LT.



STA. 269+00 TO 270+00 -L- RT.  
EST. 78 C.Y. DDE



STA. 268+00 TO 269+00 -L- RT.  
EST. 56 S.Y. PSRM