

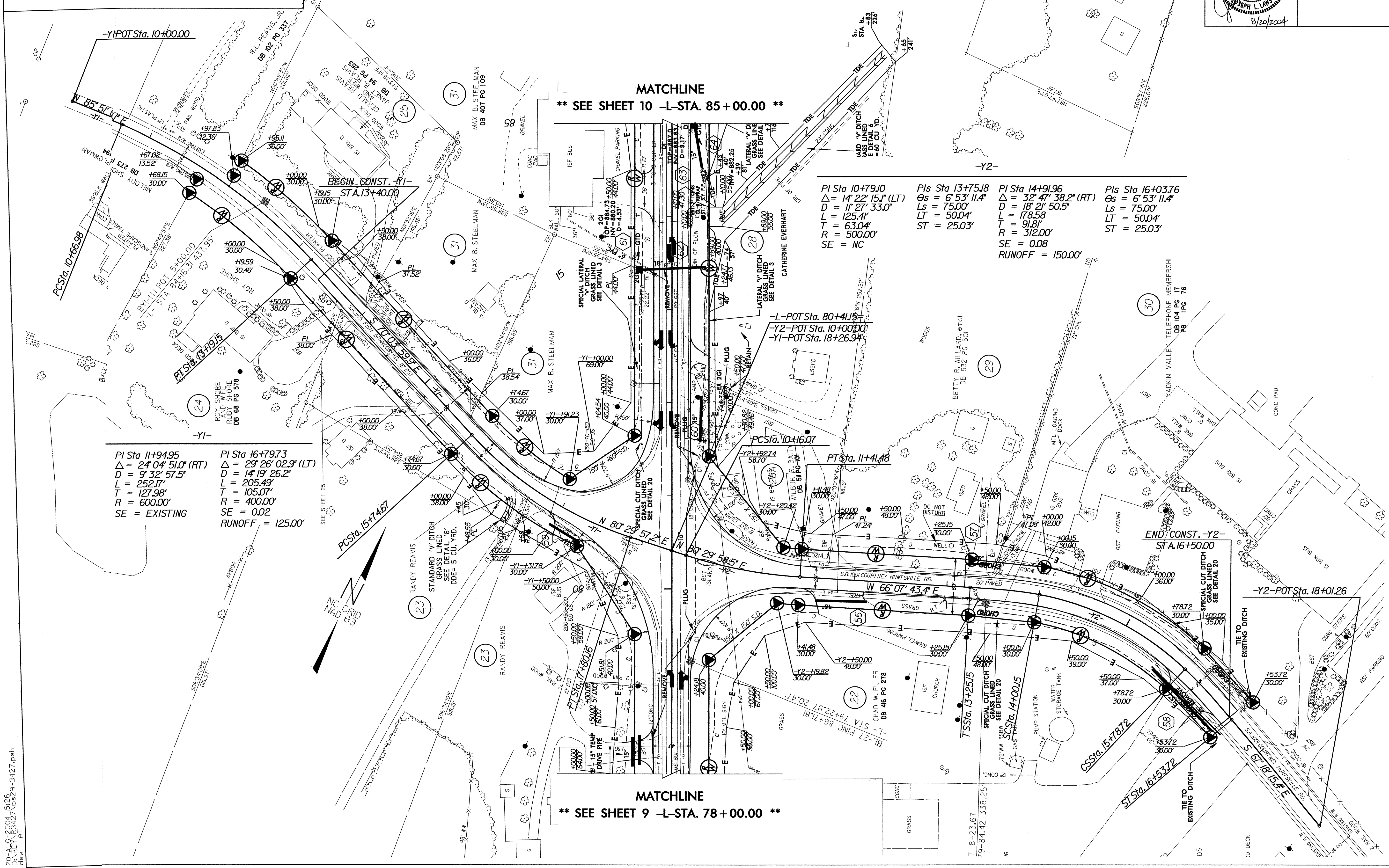
7/2/99

NOTES

FOR -L- PROFILE SEE SHEET 36
FOR -Y1- PROFILE SEE SHEET 52
FOR -Y2- PROFILE SEE SHEET 52
ALL DRIVEWAY RADII RE 20' UNLESS NOTED

PROJECT REFERENCE NO. R-3427	SHEET NO. 29
RW SHEET NO.	
ROADWAY DESIGN ENGINEER	HYDRAULICS ENGINEER

NORTH CAROLINA PROFESSIONAL ENGINEER
 SEAL 028951
 8/20/2004



PI Sta 11+94.95
 $\Delta = 24' 04" 51.0" (RT)$
 $D = 9' 32" 57.5"$
 $L = 252.17'$
 $T = 127.98'$
 $R = 600.00'$
 SE = EXISTING

PI Sta 16+79.73
 $\Delta = 29' 26" 02.9" (LT)$
 $D = 14' 19" 26.2"$
 $L = 205.49'$
 $T = 105.07'$
 $R = 400.00'$
 SE = 0.02
 RUNOFF = 125.00'

PI Sta 10+79.10
 $\Delta = 14' 22" 15.1" (LT)$
 $D = 17' 27" 33.0"$
 $L = 125.4'$
 $T = 63.04'$
 $R = 500.00'$
 SE = NC

PIs Sta 13+75.18
 $\Delta s = 6' 53" 11.4"$
 $D = 75.00'$
 $LT = 50.04'$
 $ST = 25.03'$

PI Sta 14+91.96
 $\Delta = 32' 47" 38.2" (RT)$
 $D = 18' 21" 50.5"$
 $L = 178.58'$
 $T = 91.81'$
 $R = 312.00'$
 SE = 0.08
 RUNOFF = 150.00'

PIs Sta 16+03.76
 $\Delta s = 6' 53" 11.4"$
 $D = 75.00'$
 $LT = 50.04'$
 $ST = 25.03'$

20-AUG-2004 15:26
 D:\RD\13427\p3e9-3427.psh
 DWG AT