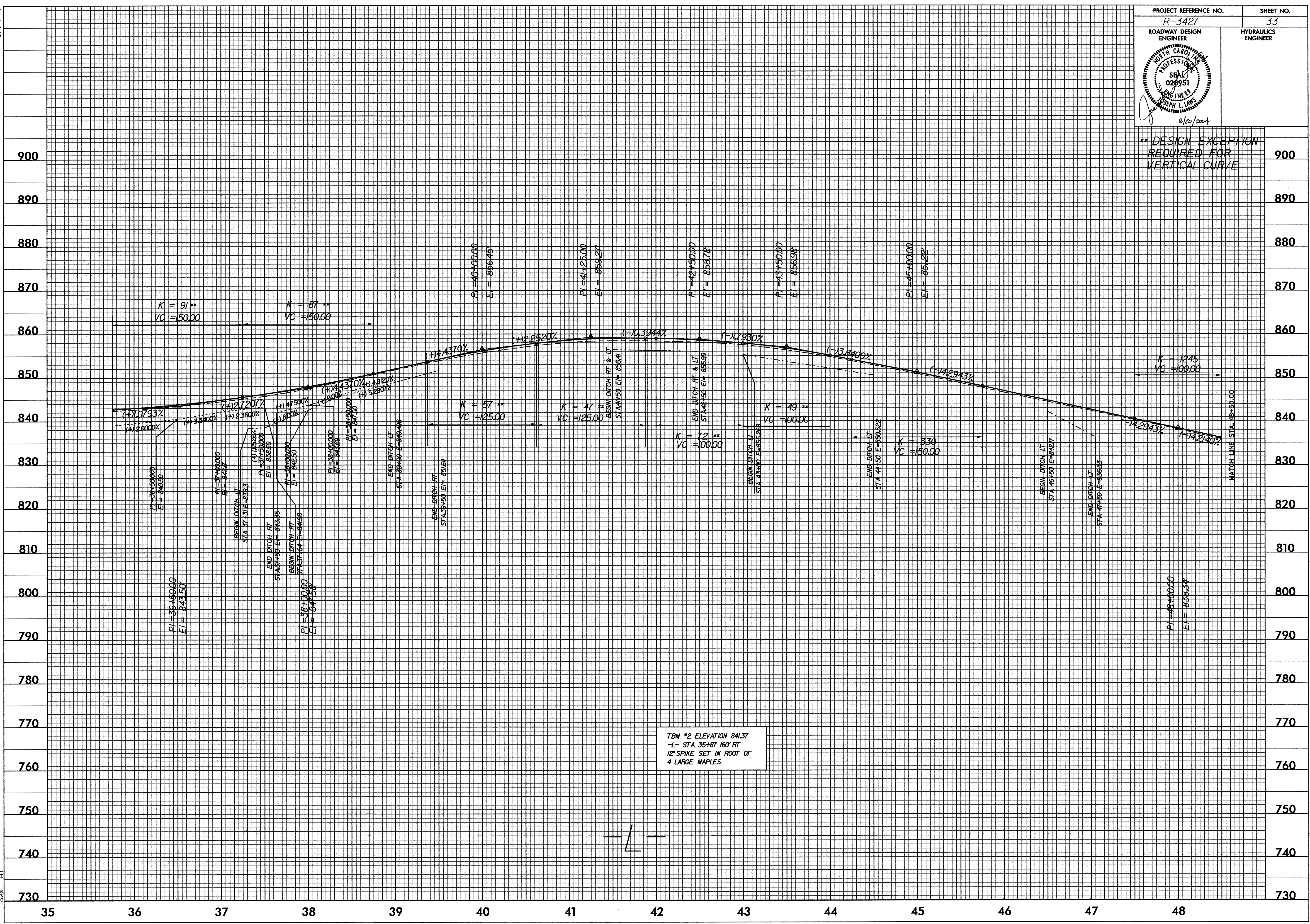


5/14/99

PROJECT REFERENCE NO. R-3427	SHEET NO. 33
ROADWAY DESIGN ENGINEER	HYDRAULICS ENGINEER

** DESIGN EXCEPTION
REQUIRED FOR
VERTICAL CURVE



TBM *2 ELEVATION 841.37
-L- STA 35+87 160' RT
12" SPIKE SET IN ROOT OF
4 LARGE MAPLES

18-JUL-2004 16:48
\\fs33r-3427\pl\psh
A