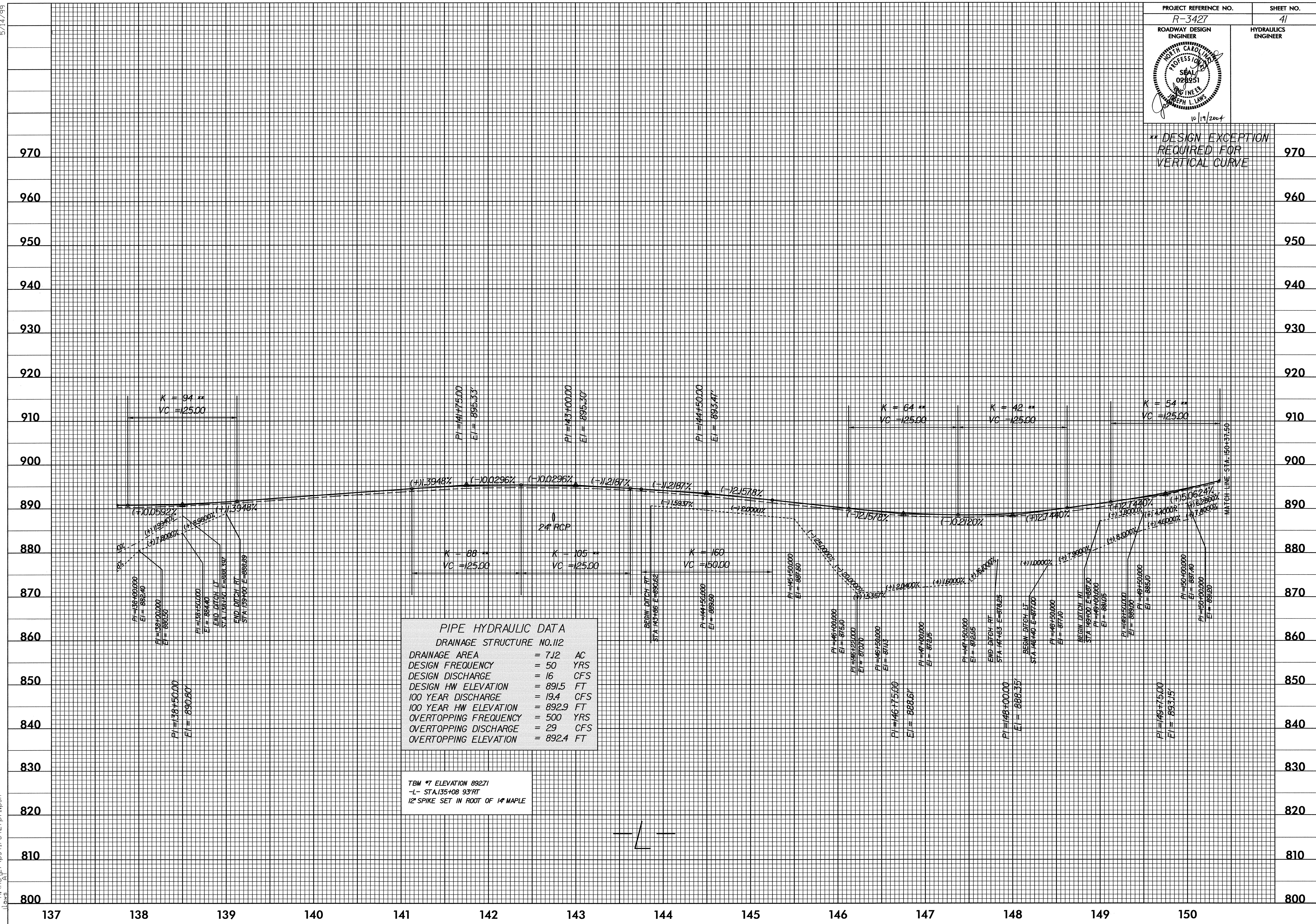


5/14/99

PROJECT REFERENCE NO. R-3427	SHEET NO. 41
ROADWAY DESIGN ENGINEER	HYDRAULICS ENGINEER

** DESIGN EXCEPTION REQUIRED FOR VERTICAL CURVE



PIPE HYDRAULIC DATA
DRAINAGE STRUCTURE NO. 112

DRAINAGE AREA	= 7.12	AC
DESIGN FREQUENCY	= 50	YRS
DESIGN DISCHARGE	= 16	CFS
DESIGN HW ELEVATION	= 891.5	FT
100 YEAR DISCHARGE	= 19.4	CFS
100 YEAR HW ELEVATION	= 892.9	FT
OVERTOPPING FREQUENCY	= 500	YRS
OVERTOPPING DISCHARGE	= 29	CFS
OVERTOPPING ELEVATION	= 892.4	FT

TBM #7 ELEVATION 892.71
-L- STA 135+08 93" RT
12" SPIKE SET IN ROOT OF 14" MAPLE

19-OCT-2004 16:25
H:\R3427\Drawings\41r-3427p1.dwg
jll