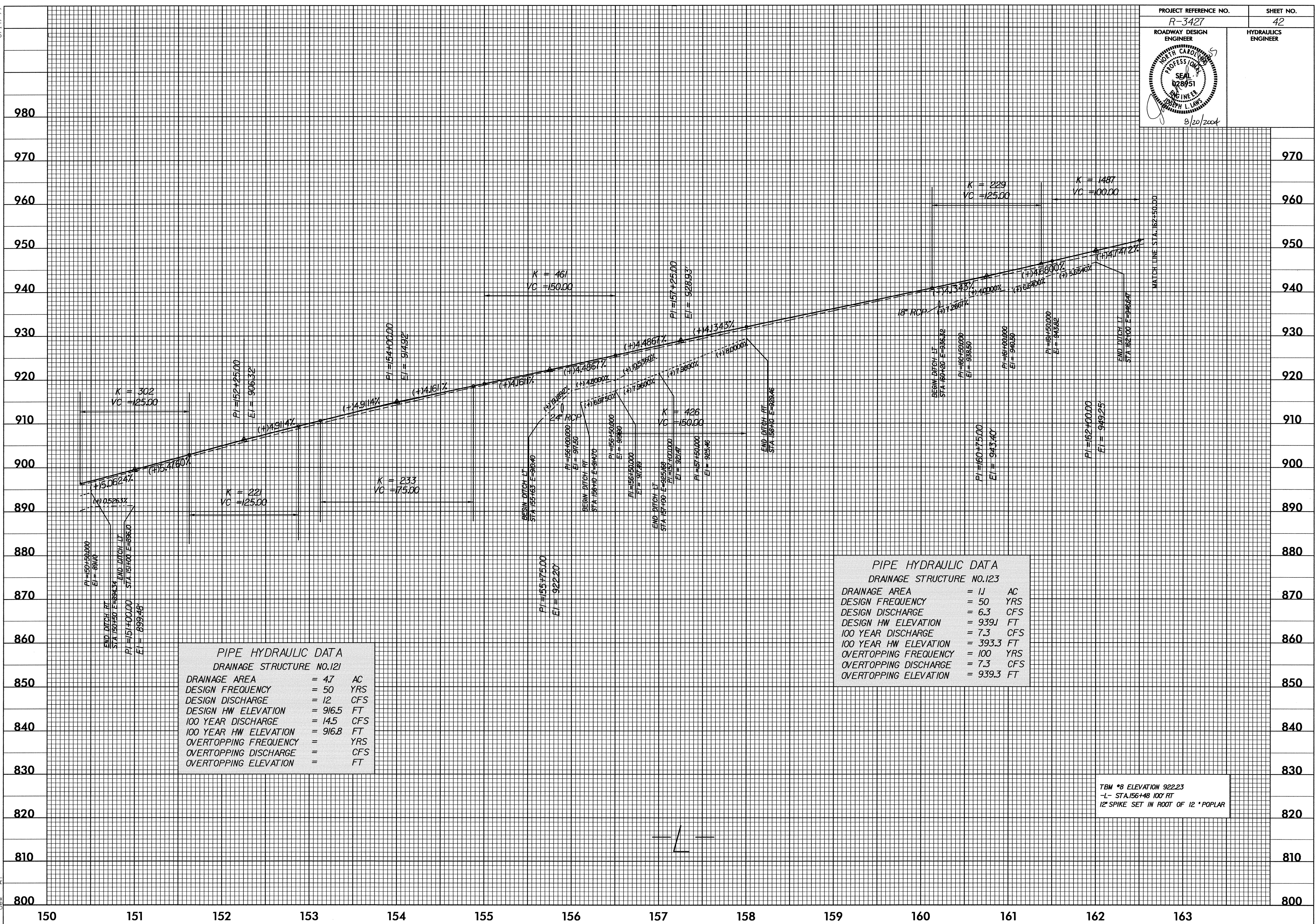


5/14/99

PROJECT REFERENCE NO. R-3427	SHEET NO. 42
ROADWAY DESIGN ENGINEER	HYDRAULICS ENGINEER



PIPE HYDRAULIC DATA DRAINAGE STRUCTURE NO.121	
DRAINAGE AREA	= 4.7 AC
DESIGN FREQUENCY	= 50 YRS
DESIGN DISCHARGE	= 12 CFS
DESIGN HW ELEVATION	= 916.5 FT
100 YEAR DISCHARGE	= 14.5 CFS
100 YEAR HW ELEVATION	= 916.8 FT
OVERTOPPING FREQUENCY	= 100 YRS
OVERTOPPING DISCHARGE	= 14.5 CFS
OVERTOPPING ELEVATION	= 916.8 FT

PIPE HYDRAULIC DATA DRAINAGE STRUCTURE NO.123	
DRAINAGE AREA	= 11 AC
DESIGN FREQUENCY	= 50 YRS
DESIGN DISCHARGE	= 6.3 CFS
DESIGN HW ELEVATION	= 939.1 FT
100 YEAR DISCHARGE	= 7.3 CFS
100 YEAR HW ELEVATION	= 939.3 FT
OVERTOPPING FREQUENCY	= 100 YRS
OVERTOPPING DISCHARGE	= 7.3 CFS
OVERTOPPING ELEVATION	= 939.3 FT

TBM *B ELEVATION 922.23
 -L- STA.156+48 100' RT
 1/2" SPIKE SET IN ROOT OF 12" POPLAR

20-AUG-2004 16:31
 D:\FD\3427\ps42r3427.dfl.psh
 cew