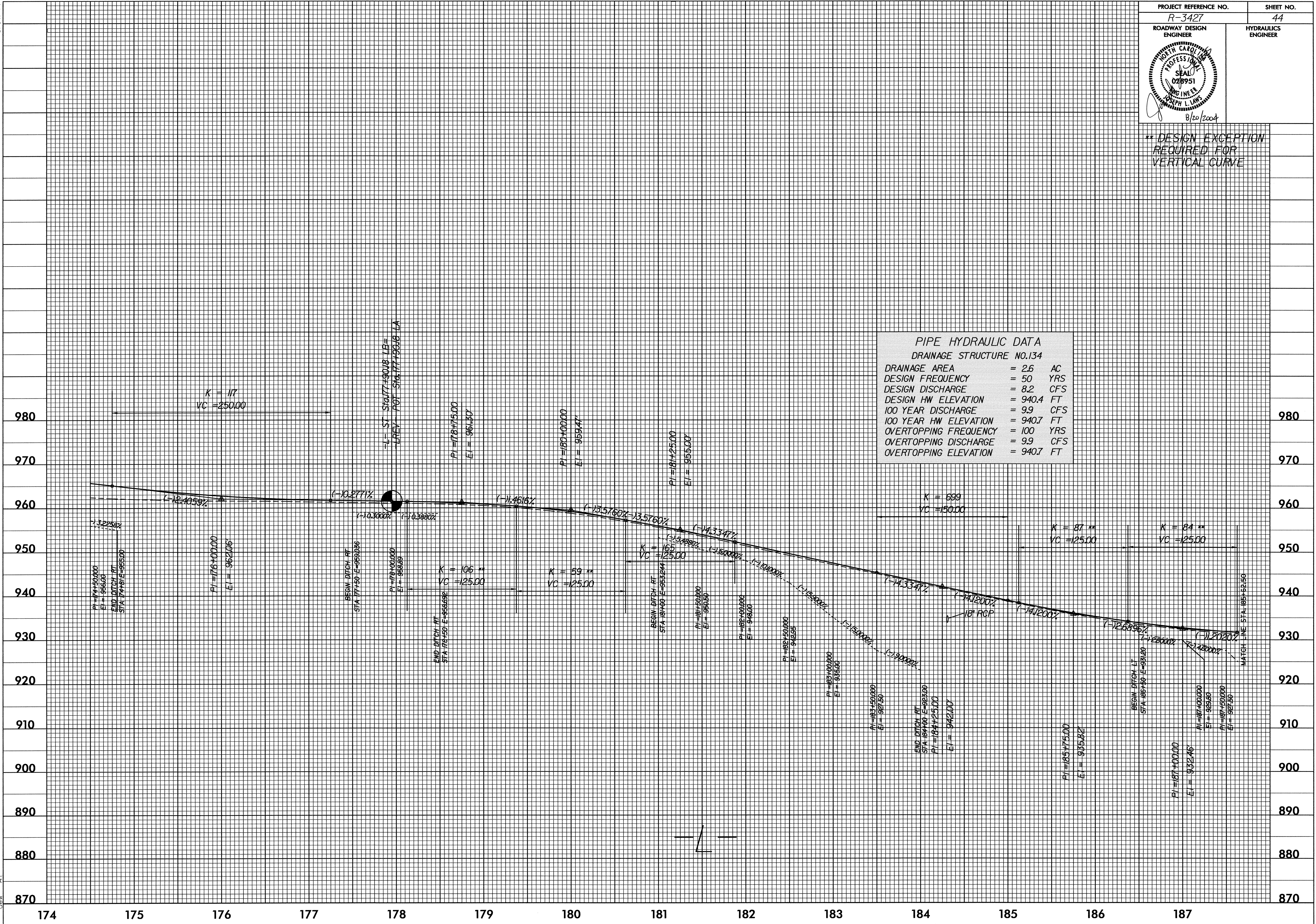


5/14/99

| | |
|---------------------------------|---------------------|
| PROJECT REFERENCE NO. R-3427 | SHEET NO. 44 |
| ROADWAY DESIGN ENGINEER | HYDRAULICS ENGINEER |
| | |

** DESIGN EXCEPTION REQUIRED FOR VERTICAL CURVE

| PIPE HYDRAULIC DATA | |
|---------------------------|------------|
| DRAINAGE STRUCTURE NO.134 | |
| DRAINAGE AREA | = 2.6 AC |
| DESIGN FREQUENCY | = 50 YRS |
| DESIGN DISCHARGE | = 8.2 CFS |
| DESIGN HW ELEVATION | = 940.4 FT |
| 100 YEAR DISCHARGE | = 9.9 CFS |
| 100 YEAR HW ELEVATION | = 940.7 FT |
| OVERTOPPING FREQUENCY | = 100 YRS |
| OVERTOPPING DISCHARGE | = 9.9 CFS |
| OVERTOPPING ELEVATION | = 940.7 FT |



20-AUG-2004 16:42
D:\PROY\B3427\ps44r-3427pf1.psh
dev A