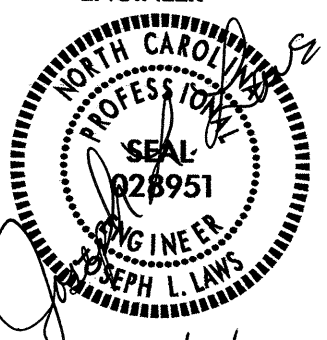
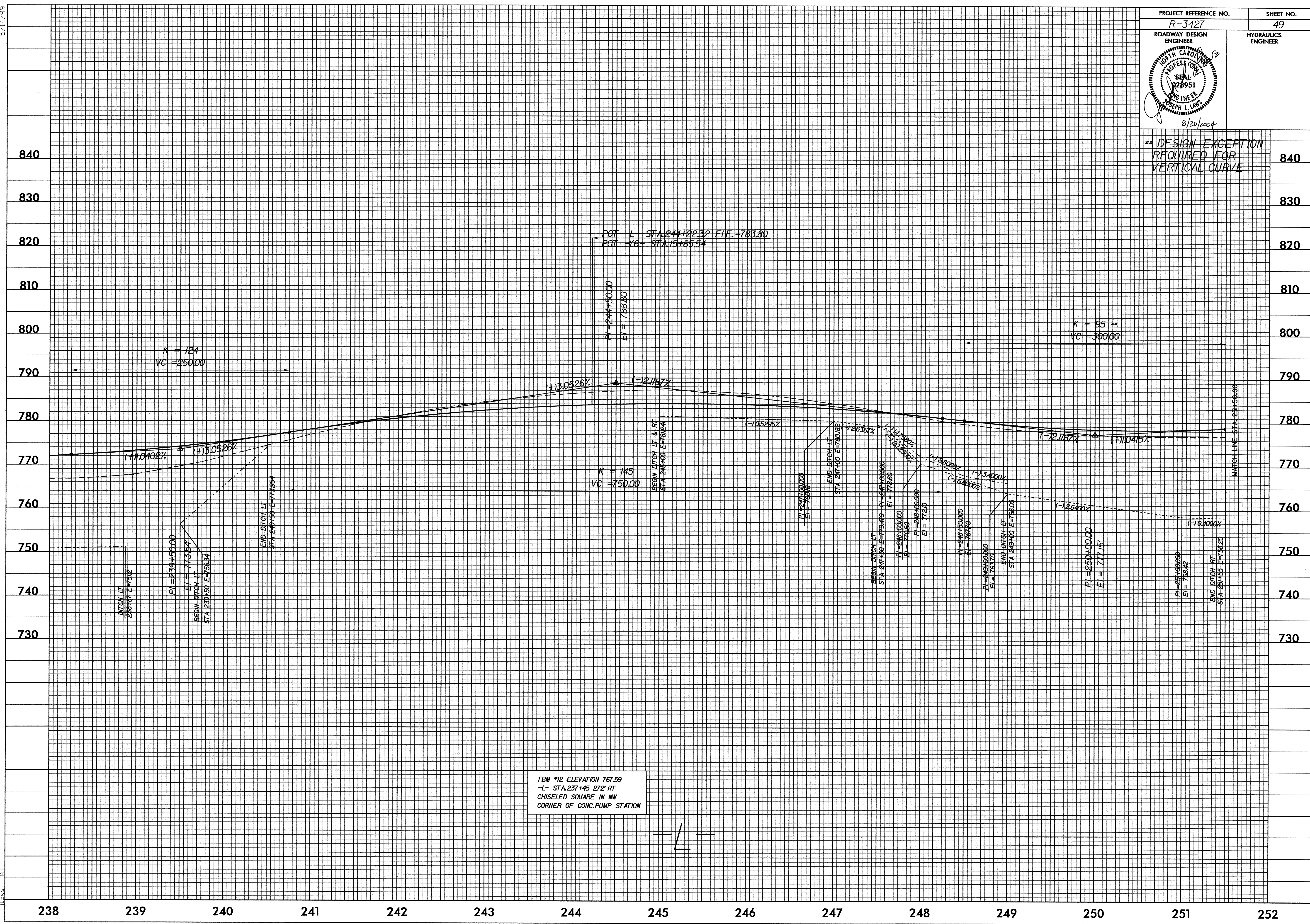


5/14/99

PROJECT REFERENCE NO. R-3427	SHEET NO. 49
ROADWAY DESIGN ENGINEER	HYDRAULICS ENGINEER
	
8/20/2004	

** DESIGN EXCEPTION
REQUIRED FOR
VERTICAL CURVE



TBM #12 ELEVATION 767.59
 -L- STA.237+45.27' RT
 CHISELED SQUARE IN NW
 CORNER OF CONC.PUMP STATION

18-JUL-2004 10:20
 H:\Projects\3427\p1.psh
 J.Laws