

NOTES

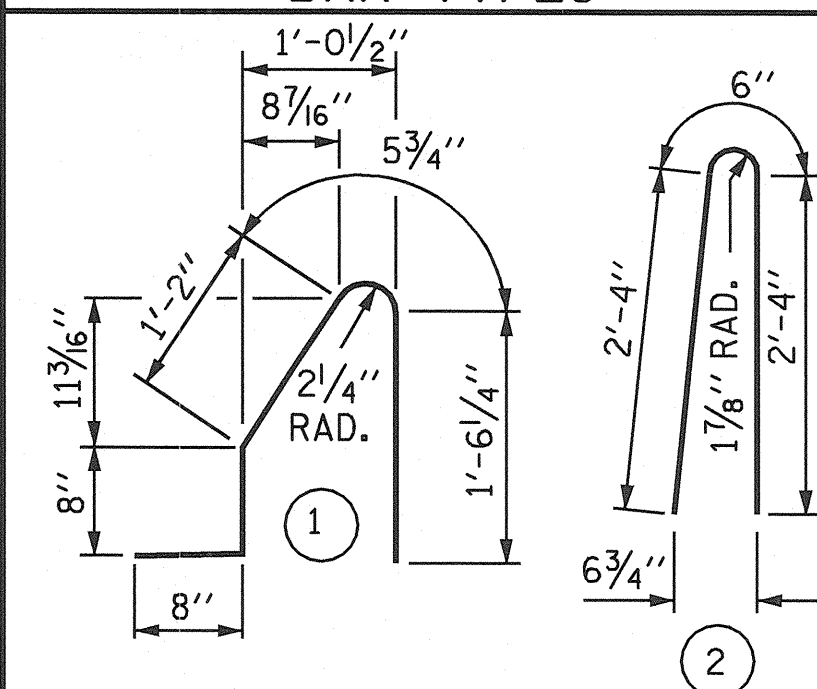
THE BARRIER RAIL IN EACH CONTINUOUS UNIT SHALL NOT BE CAST UNTIL ALL SLAB CONCRETE IN THAT UNIT HAS BEEN CAST AND HAS REACHED A MINIMUM COMPRESSIVE STRENGTH OF 3,000 PSI.

ALL REINFORCING STEEL IN BARRIER RAILS SHALL BE EPOXY COATED.

VERTICAL GROOVED CONTRACTION JOINTS, 1/2" IN DEPTH, SHALL BE TOOLED IN ALL EXPOSED FACES OF THE BARRIER RAIL AND IN ACCORDANCE WITH ARTICLE 825-10(B) OF THE STANDARD SPECIFICATIONS. THE CONTRACTION JOINT SHALL BE LOCATED AT EACH THIRD POINT BETWEEN BARRIER RAIL EXPANSION JOINTS. ONLY ONE CONTRACTION JOINT IS REQUIRED AT MIDPOINT OF BARRIER RAIL SEGMENTS LESS THAN 20 FEET IN LENGTH AND NO CONTRACTION JOINTS ARE REQUIRED FOR THOSE SEGMENTS LESS THAN 10 FEET IN LENGTH.

THE #5 "S" BARS MAY BE SHIFTED SLIGHTLY IN ORDER TO MAINTAIN A 2" MINIMUM CLEARANCE TO THE 1/2" EXPANSION JOINT MATERIAL IN THE BARRIER RAIL.

BAR TYPES



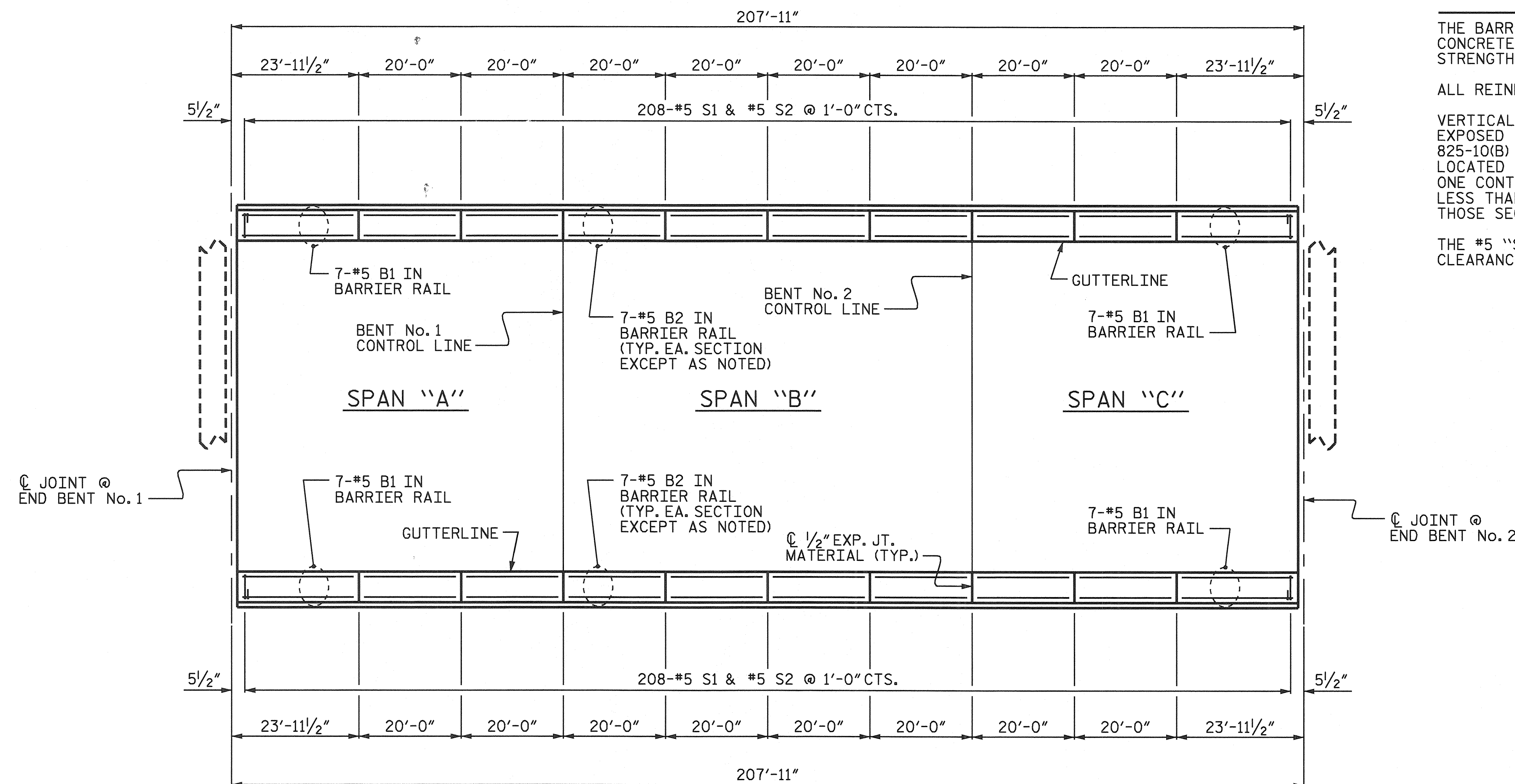
ALL BAR DIMENSIONS ARE OUT TO OUT

BILL OF MATERIAL

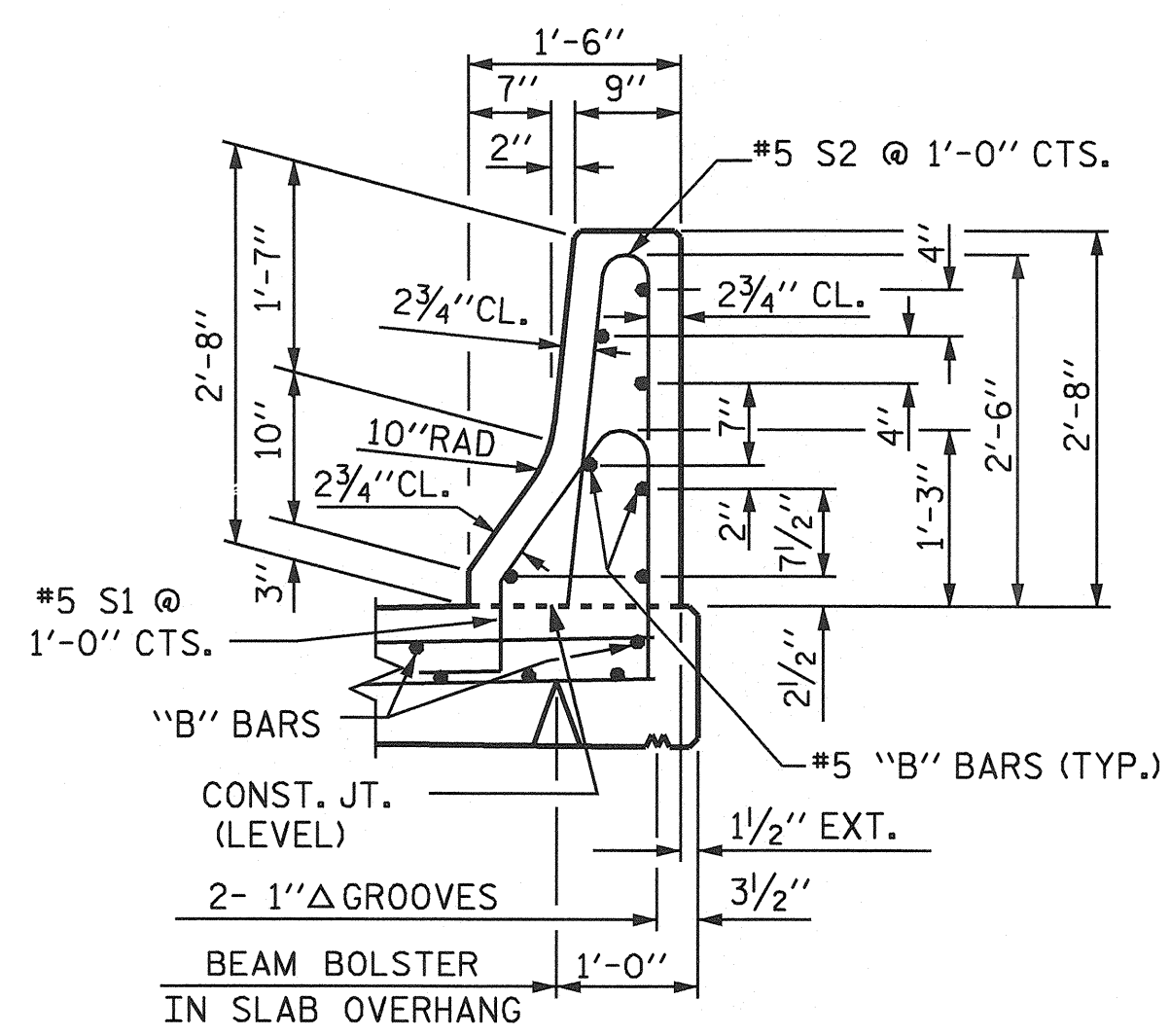
FOR CONCRETE BARRIER RAIL ONLY

BAR NO.	SIZE	TYPE	LENGTH	WEIGHT
* B1	28	#5 STR	23'-7"	689
* B2	112	#5 STR	19'-8"	2297
* S1	416	#5 1	4'-6"	1952
* S2	416	#5 2	5'-2"	2242

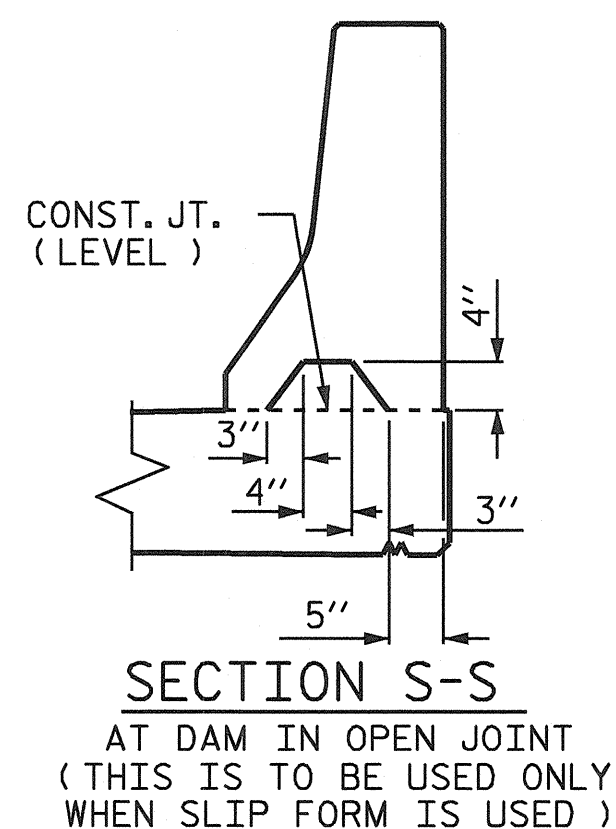
* EPOXY COATED REINFORCING STEEL 7180 LBS.
CLASS AA CONCRETE 41.7 CU. YDS.
CONCRETE BARRIER RAIL 415.83 LIN. FT.



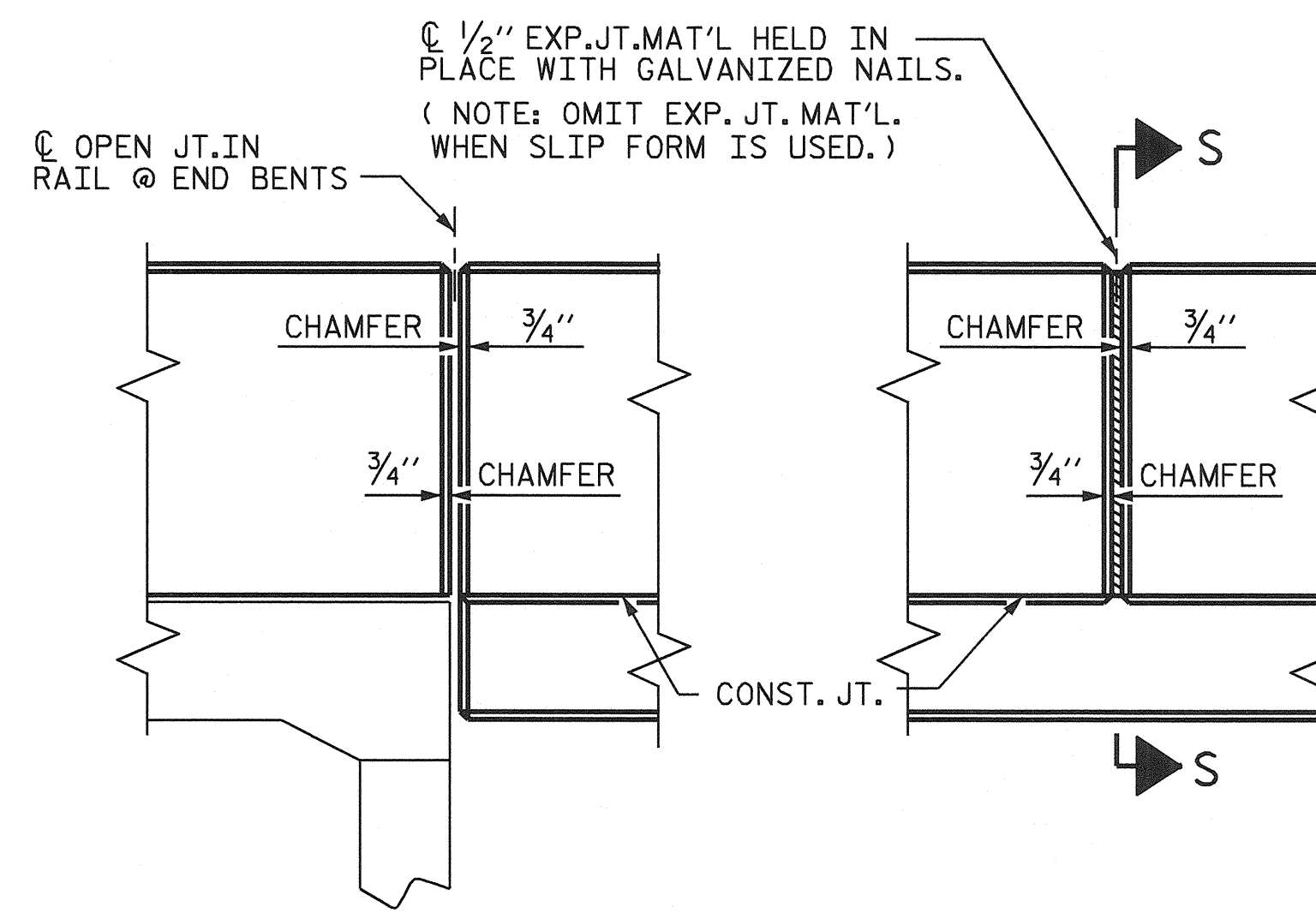
PLAN OF BARRIER RAIL



SECTION THRU RAIL



SECTION S-S
AT DAM IN OPEN JOINT
(THIS IS TO BE USED ONLY WHEN SLIP FORM IS USED)



ELEVATION AT EXPANSION JOINTS

BARRIER RAIL DETAILS

PROJECT NO. R-3427
YADKIN COUNTY
STATION: 236+73.00 -L-

STATE OF NORTH CAROLINA
DEPARTMENT OF TRANSPORTATION
RALEIGH
CONCRETE BARRIER RAIL



Theo J. Beal 8/13/04

ASSEMBLED BY: P.C. BREWER DATE: 6/16/03
CHECKED BY: S.B. WILLIAMS DATE: 6/30/03
DRAWN BY: ARB 5/87 REV. 8/16/99 RWW/LES
CHECKED BY: SJD 9/87 REV. 10/17/00 RWW/LES
REV. 5/7/03 RWW/JTE

13-AUG-2004 12:08
W:\squad\vr3427\str1\pbrewer\lmcrostation\R3427.sd_BR_01.dgn
tbeach

REVISIONS					SHEET NO.	
NO.	BY:	DATE:	NO.	BY:	DATE:	S-15
1			3			TOTAL SHEETS
2			4			31

STD. NO. CBRI

STR. *1