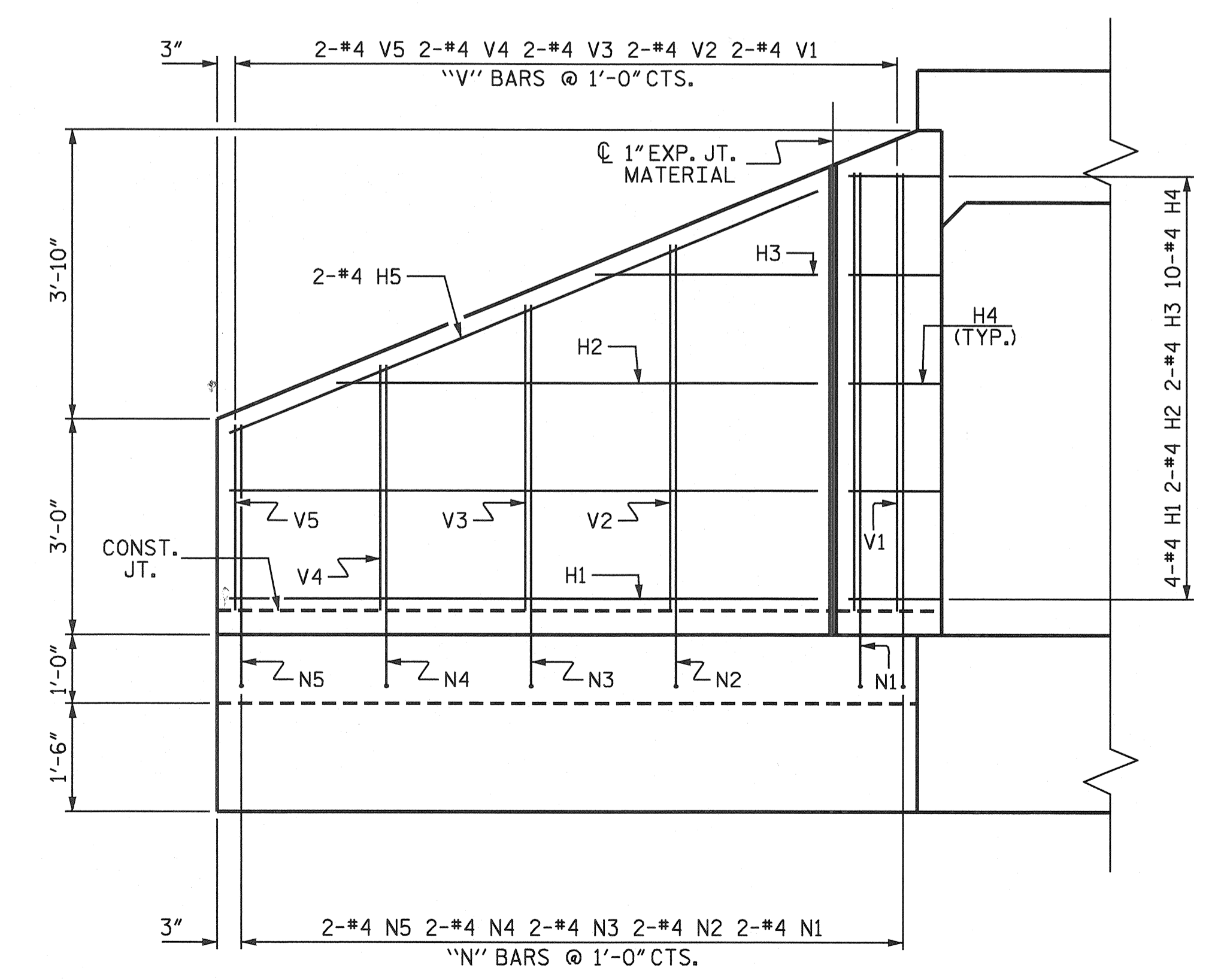
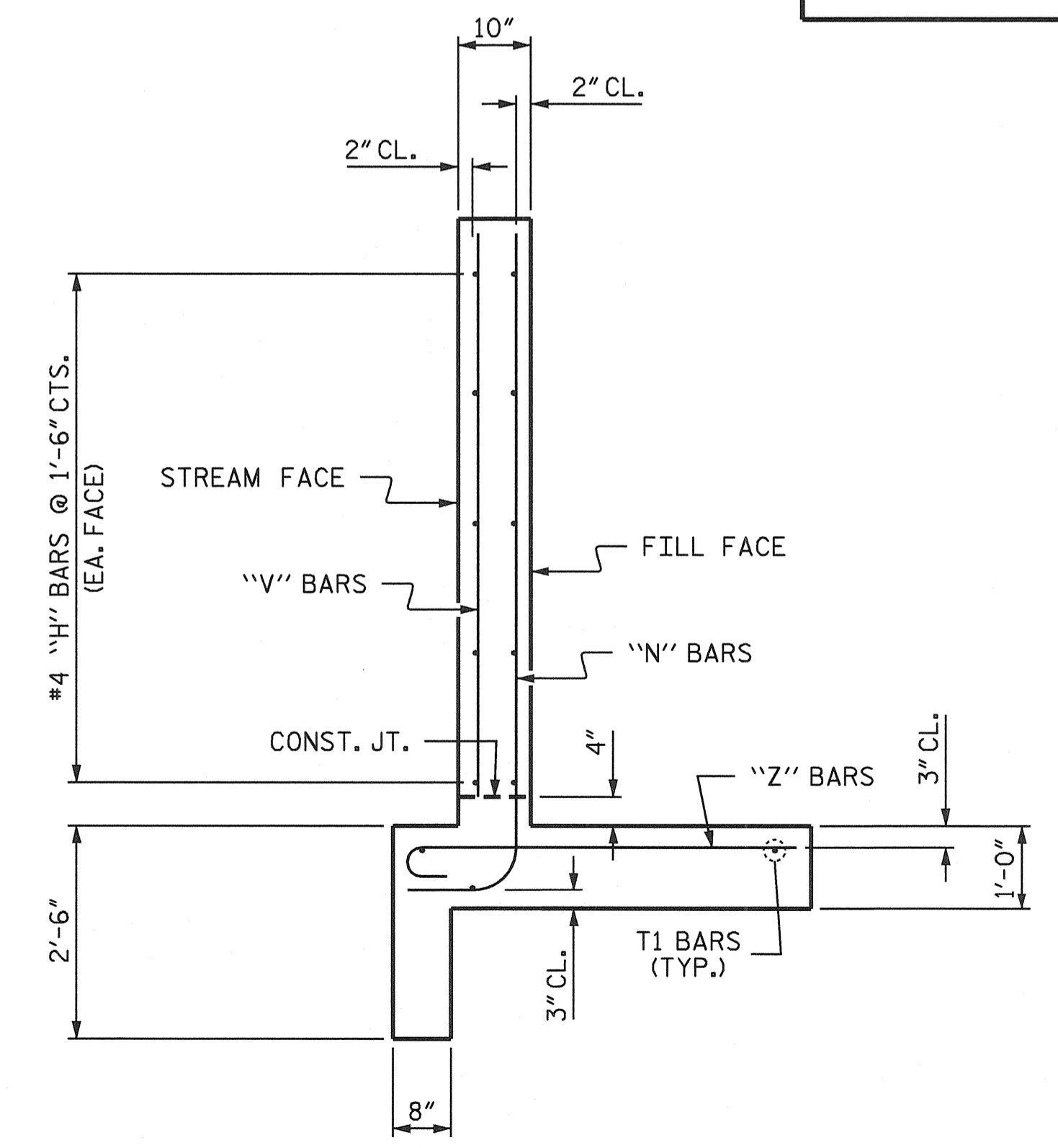


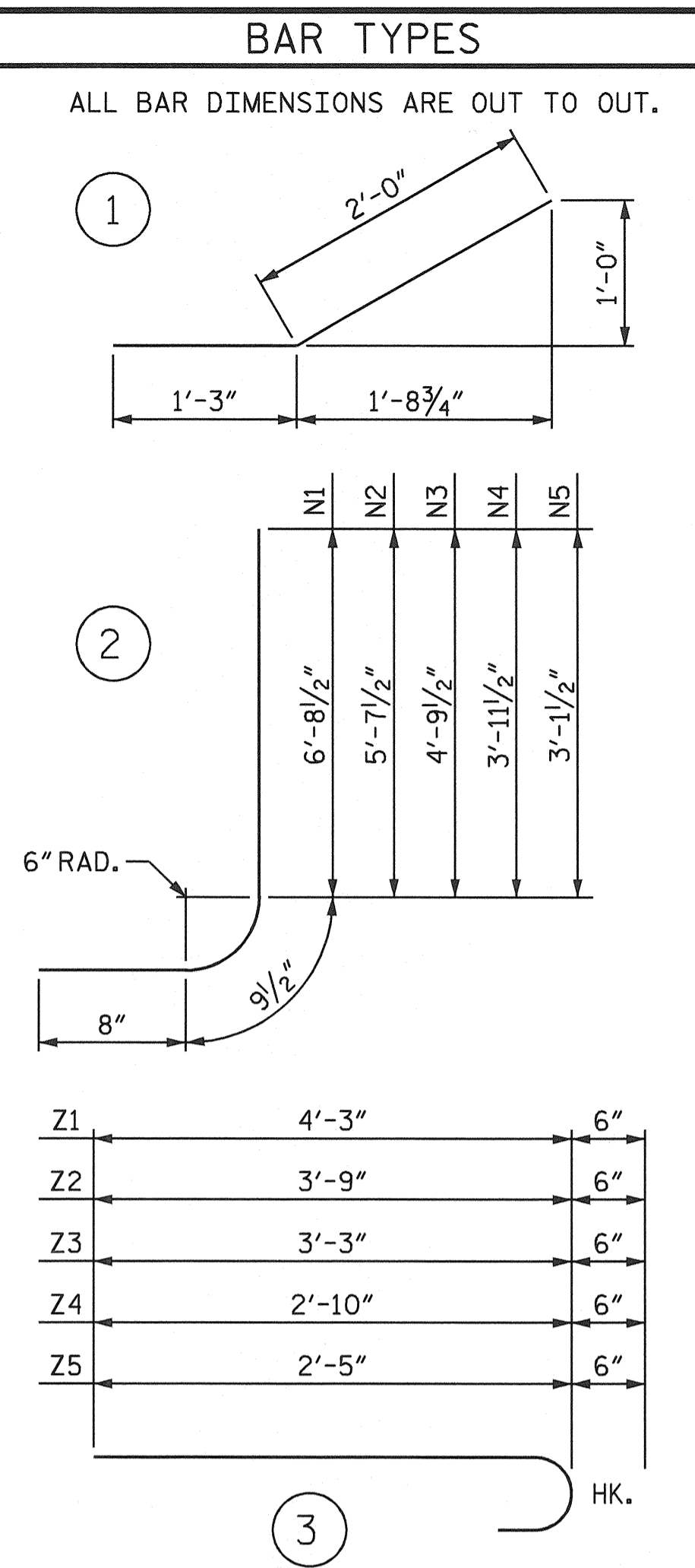
PLAN-INLET WINGS



ELEVATION-INLET WINGS



TYPICAL WING SECTION



BILL OF MATERIAL					
BAR	NO.	SIZE	TYPE	LENGTH	WEIGHT
H1	8	#4	STR	8'-1"	43
H2	4	#4	STR	6'-8"	18
H3	4	#4	STR	3'-1"	8
H4	20	#4	1	3'-3"	43
H5	4	#4	STR	8'-9"	23
N1	4	#4	2	8'-2"	22
N2	4	#4	2	7'-1"	19
N3	4	#4	2	6'-3"	17
N4	4	#4	2	5'-5"	14
N5	4	#4	2	4'-7"	12
T1	6	#5	STR	10'-0"	63
V1	4	#4	STR	6'-1"	16
V2	4	#4	STR	5'-1"	14
V3	4	#4	STR	4'-3"	11
V4	4	#4	STR	3'-5"	9
V5	4	#4	STR	2'-7"	7
Z1	4	#4	3	4'-9"	13
Z2	6	#4	3	4'-3"	17
Z3	4	#4	3	3'-9"	10
Z4	4	#4	3	3'-4"	9
Z5	4	#4	3	2'-11"	8

REINFORCING STEEL FOR 2 INLET WINGS		396 LBS
CLASS A CONCRETE		
2 INLET WINGS	6.9	CY
1 HEADWALL	0.3	CY
1 END CURTAIN WALL	0.3	CY
TOTAL	7.5	CY

ASSEMBLED BY : DAN PLATICA DATE : 4/10/03
 CHECKED BY : S.B. WILLIAMS DATE : 4/24/03
 DRAWN BY : CCJ 10/99
 CHECKED BY : RWW 03/00



PROJECT NO. R-3427
YADKIN COUNTY
 STATION: 25+91.40 -L-
 SHEET 5 OF 5

STATE OF NORTH CAROLINA
 DEPARTMENT OF TRANSPORTATION
 RALEIGH
 STANDARD
 INLET WINGS FOR
 RIGHT EXTENSION
 CONCRETE BOX CULVERT
 H = 6'-0" SLOPE = 2:1
 90° SKEW

REVISIONS						SHEET NO.
NO.	BY:	DATE:	NO.	BY:	DATE:	C-5
1			3			TOTAL SHEETS
2			4			9