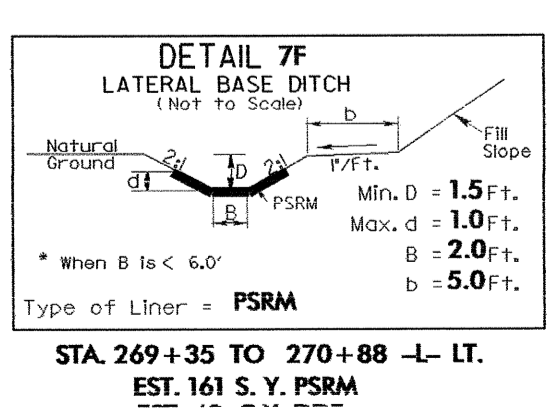
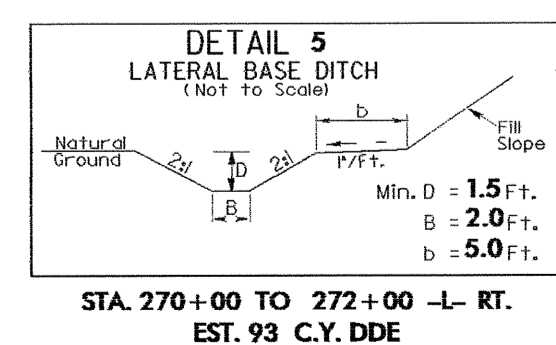
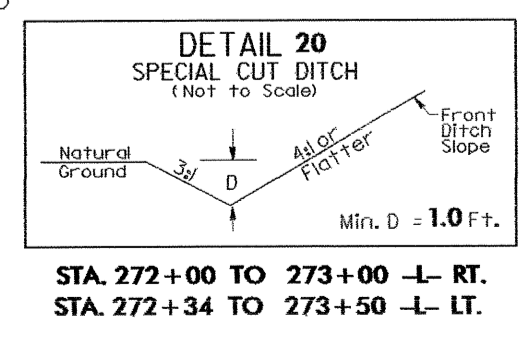
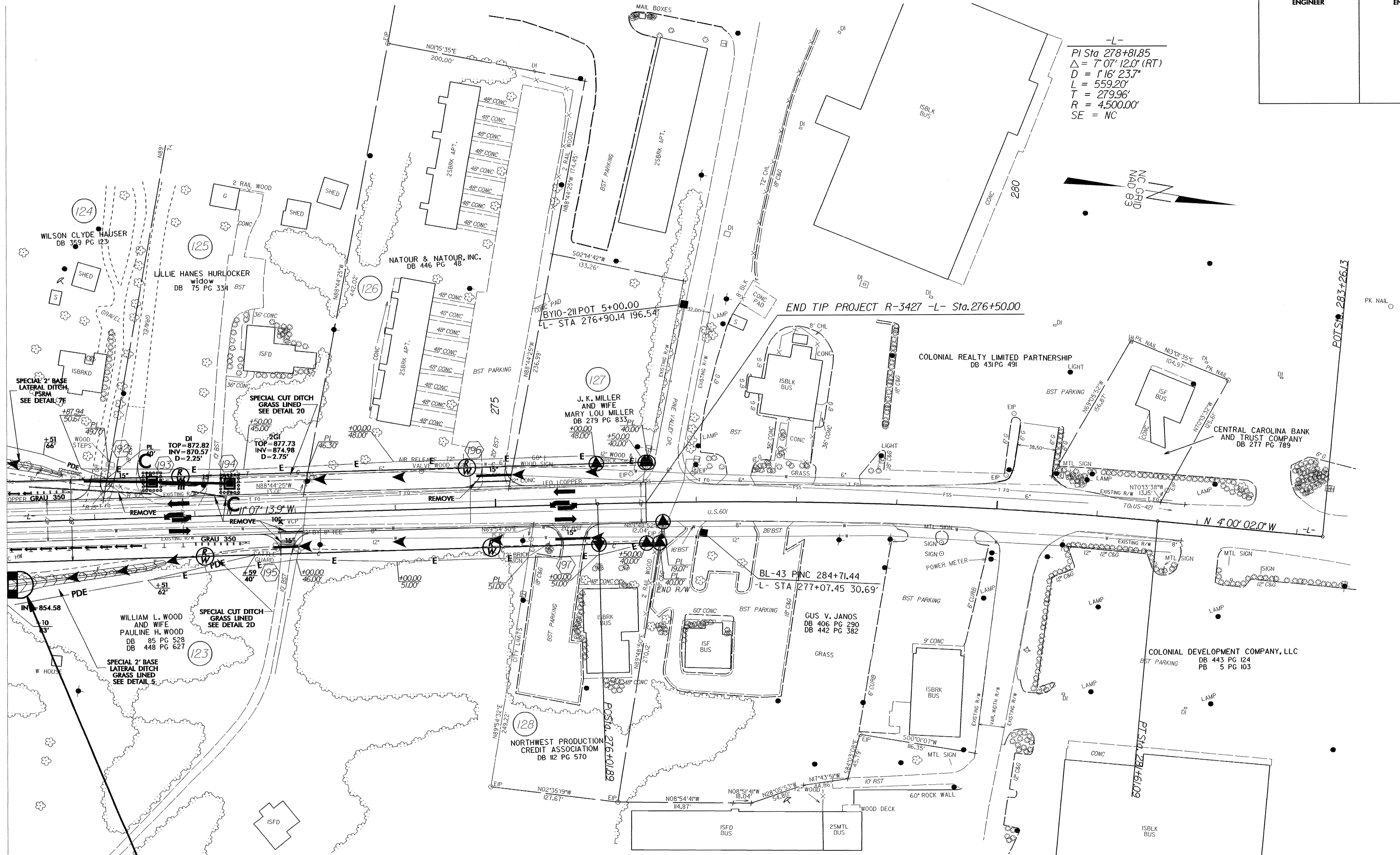


| | |
|-------------------------|---------------------|
| PROJECT REFERENCE NO. | SHEET NO. |
| R-3427 | EC-45/CONST.23 |
| RW SHEET NO. | |
| ROADWAY DESIGN ENGINEER | HYDRAULICS ENGINEER |

-L-
 PI Sta 278+81.85
 $\Delta = 7' 07" 12.0" (RT)$
 $D = 1' 16" 23.7"$
 $L = 559.20'$
 $T = 279.96'$
 $R = 4500.00'$
 SE = NC



MATCHLINE ** SEE SHEET 22 **



22 x 11 x 3
8' weir

STA. 272+00 TO 273+00 -L- RT.
 STA. 272+34 TO 273+50 -L- LT.

STA. 270+00 TO 272+00 -L- RT.
 EST. 93 C.Y. DDE

28-SEP-2004 16:03 D:\SE\1100\Roadway\3427\ps23\3427.rps 7/2/09