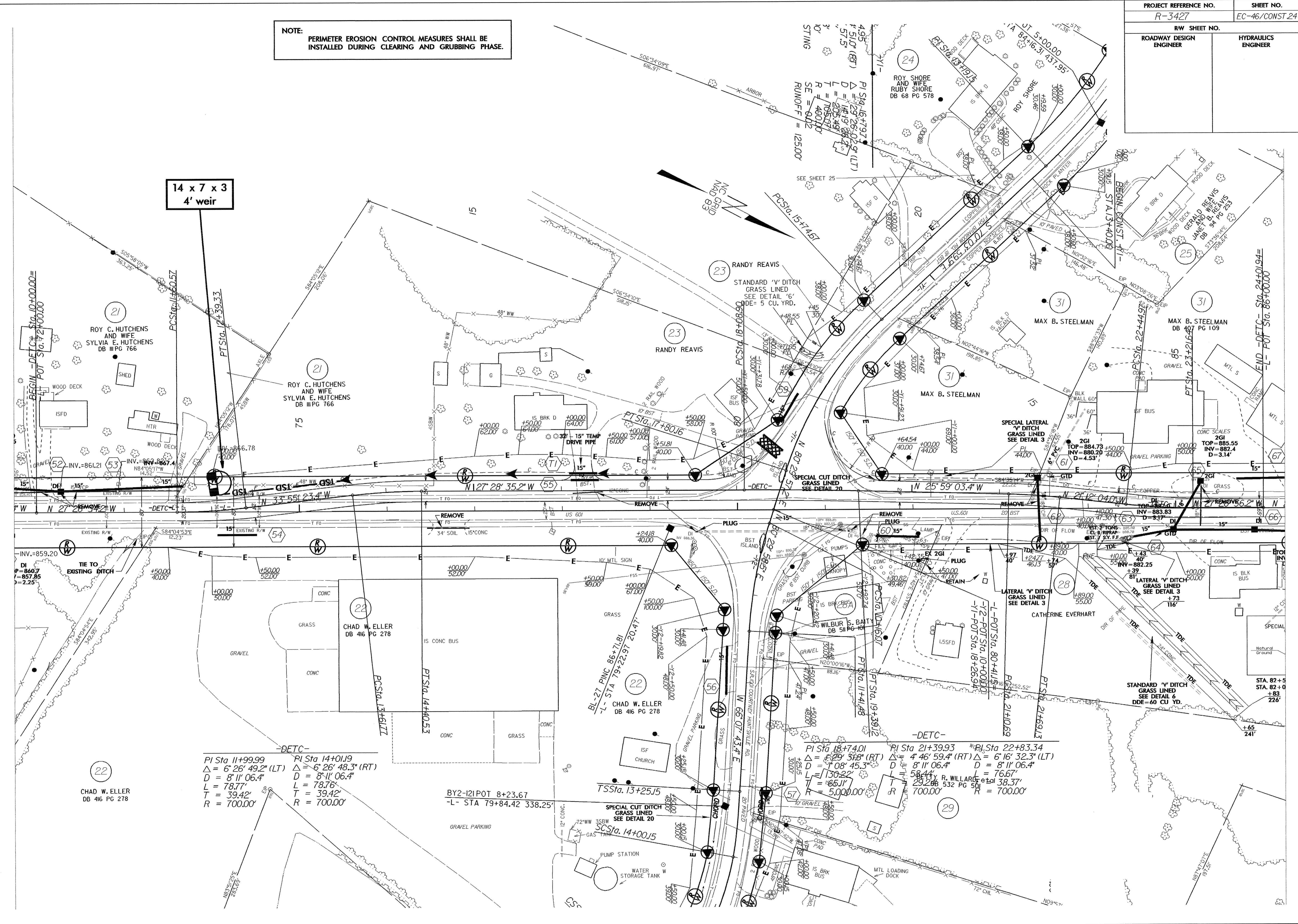


PROJECT REFERENCE NO.		SHEET NO.	
R-3427		EC-46/CONST.24	
RW SHEET NO.		HYDRAULICS ENGINEER	
ROADWAY DESIGN ENGINEER			

NOTE: PERIMETER EROSION CONTROL MEASURES SHALL BE INSTALLED DURING CLEARING AND GRUBBING PHASE.

14 x 7 x 3
4' weir



PI Sta 11+99.99 $\Delta = 6' 26' 49.2''$ (LT) $D = 8' 11' 06.4''$ $L = 78.77'$ $T = 39.42'$ $R = 700.00'$
 PI Sta 14+01.9 $\Delta = 6' 26' 48.3''$ (RT) $D = 8' 11' 06.4''$ $L = 78.76'$ $T = 39.42'$ $R = 700.00'$

PI Sta 18+74.01 $\Delta = 4' 29' 51.8''$ (RT) $D = 7' 08' 45.3''$ $L = 130.22'$ $T = 65.11'$ $R = 500.00'$
 PI Sta 21+39.93 $\Delta = 4' 46' 59.4''$ (RT) $D = 8' 11' 06.4''$ $L = 58.44'$ $T = 29.28'$ $R = 700.00'$
 PI Sta 22+83.34 $\Delta = 6' 16' 32.3''$ (LT) $D = 8' 11' 06.4''$ $L = 76.67'$ $T = 38.37'$ $R = 700.00'$

7/2/99
 28-SEP-2004 16:06
 C:\reun\p\road\ec\p24\DET\EC-46\CONST.24\psh
 E:\blackburn