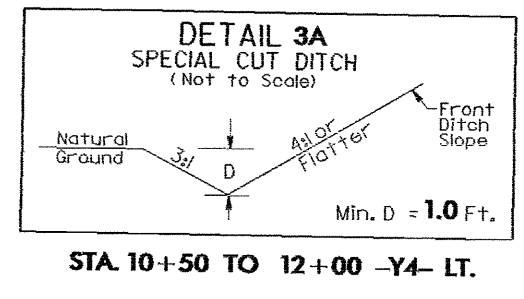
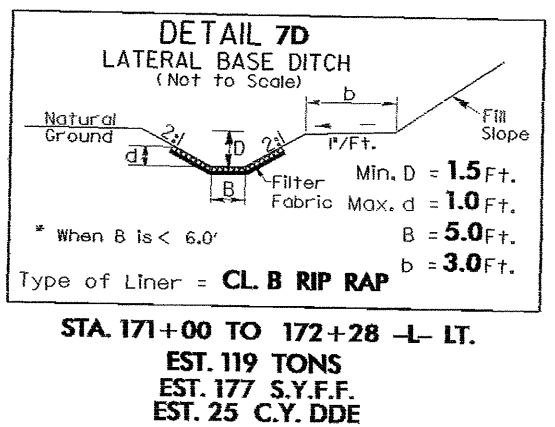
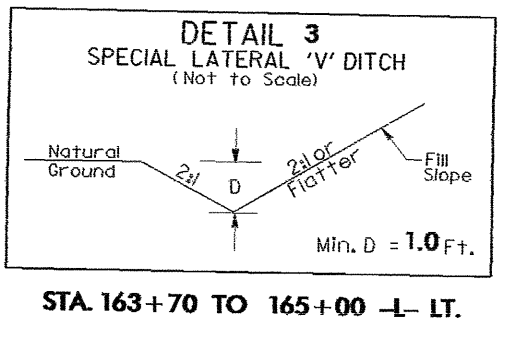
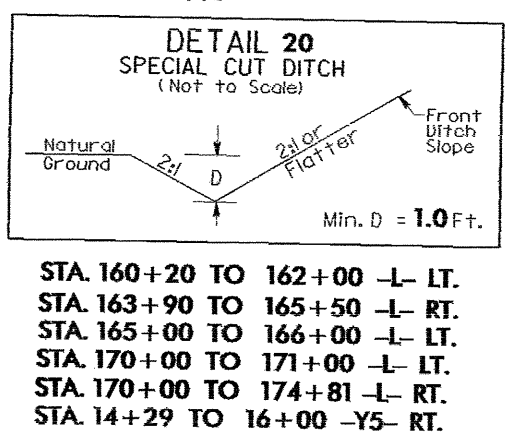
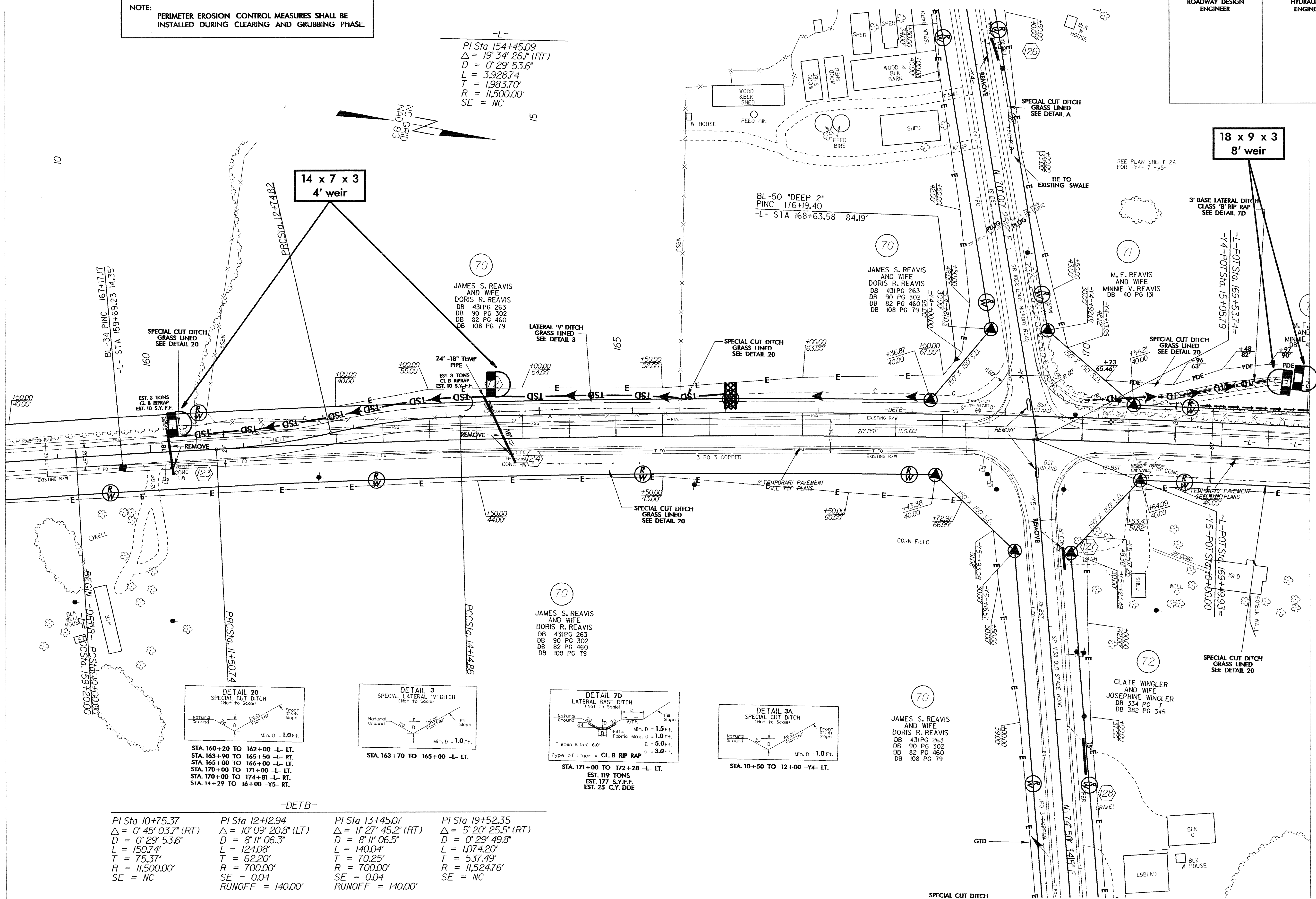


**NOTE:**  
PERIMETER EROSION CONTROL MEASURES SHALL BE INSTALLED DURING CLEARING AND GRUBBING PHASE.

-L-  
PI Sta 154+45.09  
 $\Delta = 19' 34" 26.1" (RT)$   
 $D = 0' 29' 53.6"$   
 $L = 3,928.74$   
 $T = 1,983.70'$   
 $R = 11,500.00'$   
SE = NC



-DET B-

PI Sta 10+75.37 $\Delta = 0' 45' 03.7" (RT)$ $D = 0' 29' 53.6"$ $L = 150.74'$ $T = 75.37'$ $R = 11,500.00'$ SE = NC	PI Sta 12+29.4 $\Delta = 10' 09' 20.8" (LT)$ $D = 8' 11' 06.3"$ $L = 124.08'$ $T = 62.20'$ $R = 700.00'$ SE = 0.04 RUNOFF = 140.00'	PI Sta 13+45.07 $\Delta = 11' 27' 45.2" (RT)$ $D = 8' 11' 06.5"$ $L = 140.04'$ $T = 70.25'$ $R = 700.00'$ SE = 0.04 RUNOFF = 140.00'	PI Sta 19+52.35 $\Delta = 5' 20' 25.5" (RT)$ $D = 0' 29' 49.8"$ $L = 1,074.20'$ $T = 537.49'$ $R = 11,524.76'$ SE = NC
---	--	---	--

MATCHLINE \*\* SEE SHEET 26 \*\*

7/2/09  
28-SEP-2004 11:50 AM C:\Users\jblackburn\Documents\Roadway\ps25\DET B-3427.rpt  
jblackburn