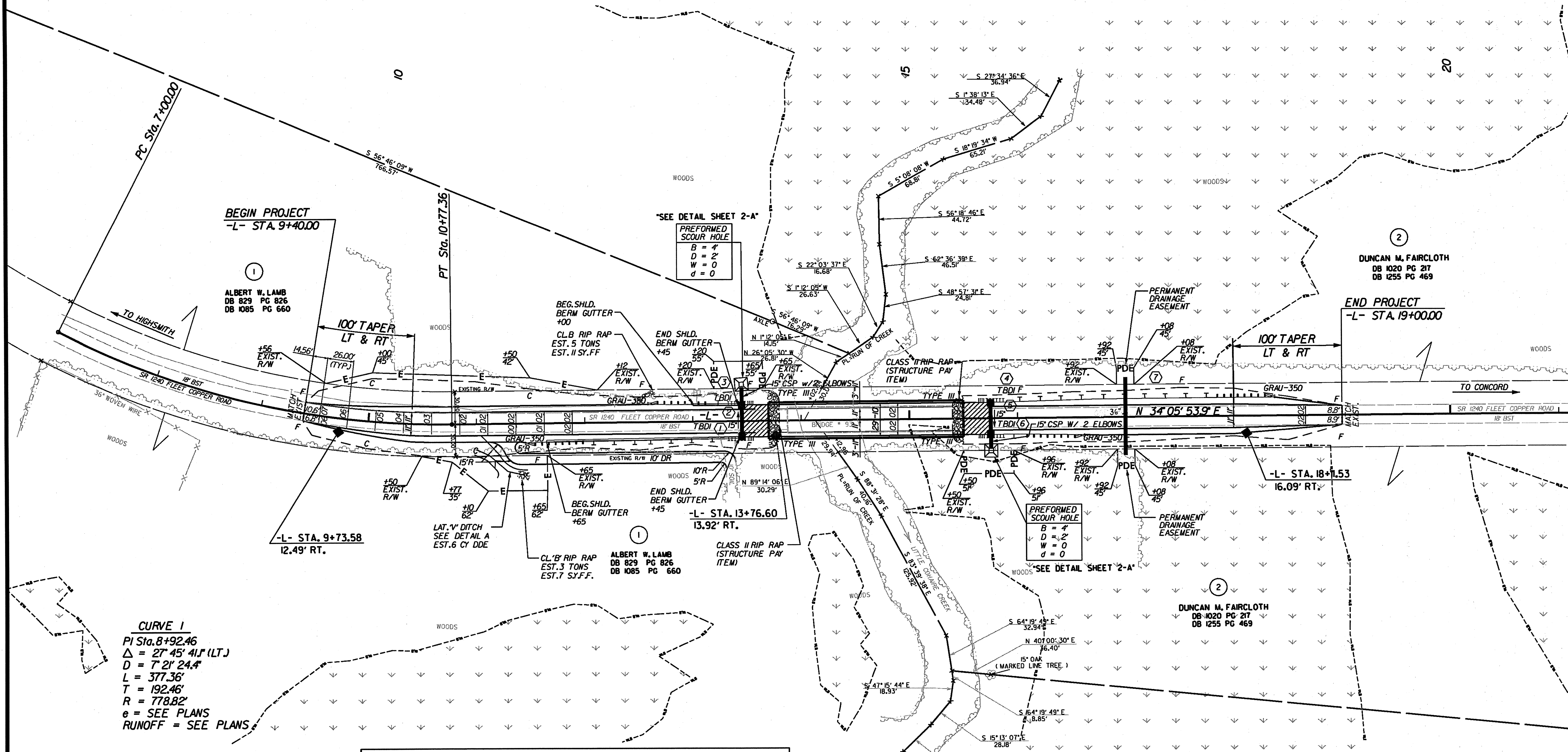


10/26/08

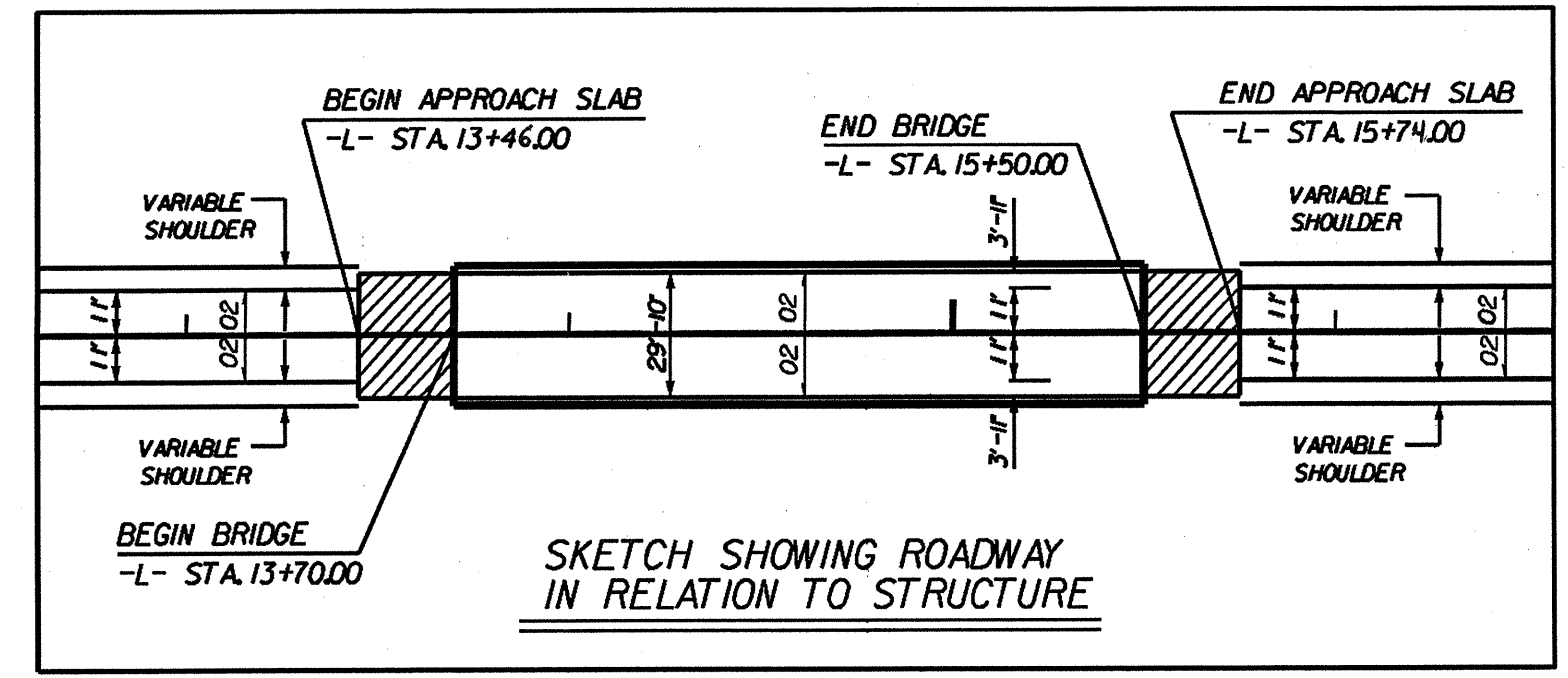
REVISIONS

PROJECT REFERENCE NO. B-4270	SHEET NO. 4
RW SHEET NO.	
ROADWAY DESIGN ENGINEER NORTH CAROLINA PROFESSIONAL SEAL 027771 MATTHEW B. COOPER 10/12/04	HYDRAULICS ENGINEER NORTH CAROLINA PROFESSIONAL SEAL 18442 LEON BOLINGER 10/14/04

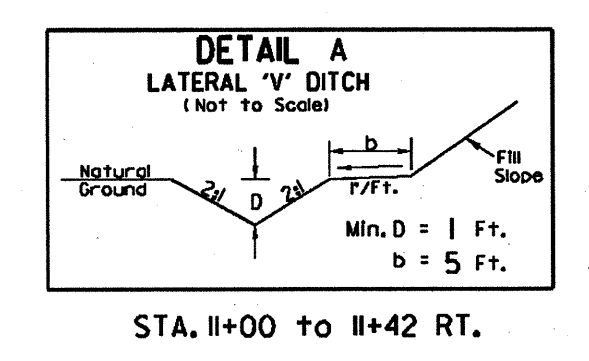


CURVE 1
 P/Sta. 8+92.46
 $\Delta = 27^\circ 45' 41.1''$ (LT.)
 $D = 7' 21.244''$
 $L = 377.36'$
 $T = 192.46'$
 $R = 778.82'$
 $e = \text{SEE PLANS}$
 $\text{RUNOFF} = \text{SEE PLANS}$

DATUM DESCRIPTION
 THE LOCALIZED COORDINATE SYSTEM DEVELOPED FOR THIS PROJECT IS BASED ON THE STATE PLANE COORDINATES ESTABLISHED BY NC DOT FOR MONUMENT "B4270-3" WITH NAD 1983/95 STATE PLANE GRID COORDINATES OF NORTHING: 4295548370(1) EASTING: 21605608600(1) THE AVERAGE COMBINED GRID FACTOR USED ON THIS PROJECT (GROUND TO GRID) IS: 0.999890100 THE N.C. LAMBERT GRID BEARING AND LOCALIZED HORIZONTAL GROUND DISTANCE FROM "B4270-3" TO -L- STATION 10+00.00 IS N 34° 05' 53.9" E 734.39' ALL LINEAR DIMENSIONS ARE LOCALIZED HORIZONTAL DISTANCES VERTICAL DATUM USED IS NAD 88



DENOTES WETLANDS
 DENOTES APPROACH SLAB



FOR -L- PROFILE SEE SHEET NO. 5
 SEE SHEETS S-1 THRU S-5 FOR STRUCTURE PLANS

Ramey Kemp & Associates, Inc.
 Transportation Consulting Engineers
 4928-A Windy Hill Drive Raleigh, North Carolina 27609
 1991 872-545 Fax 1991 878-5416