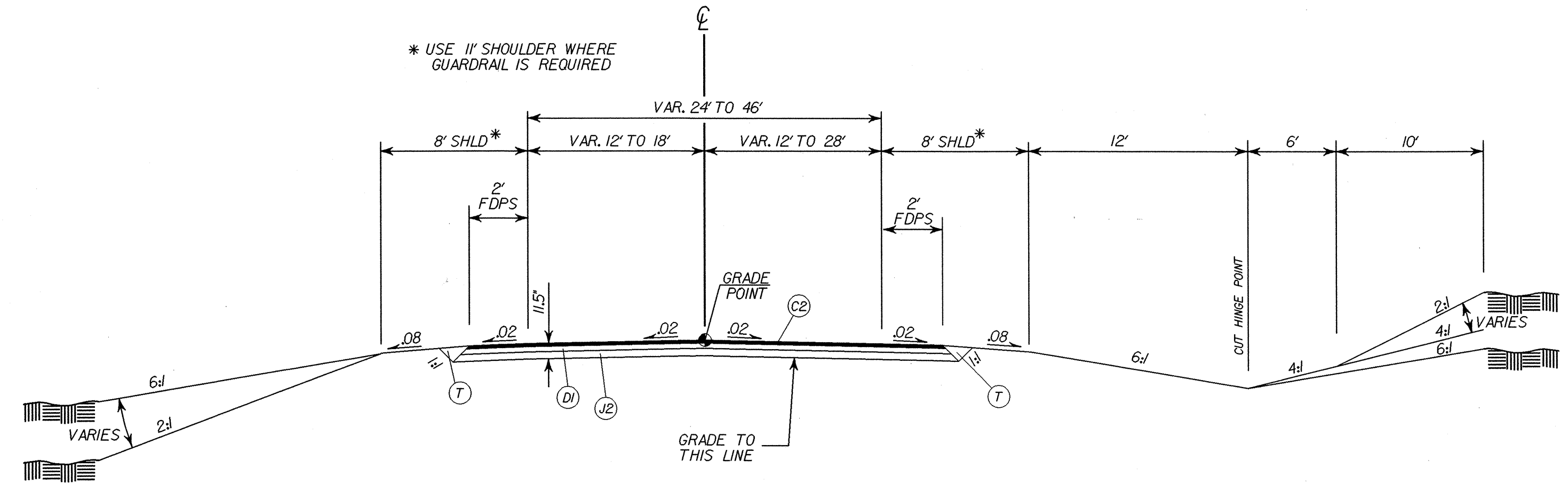


TYPICAL SECTION NO.3

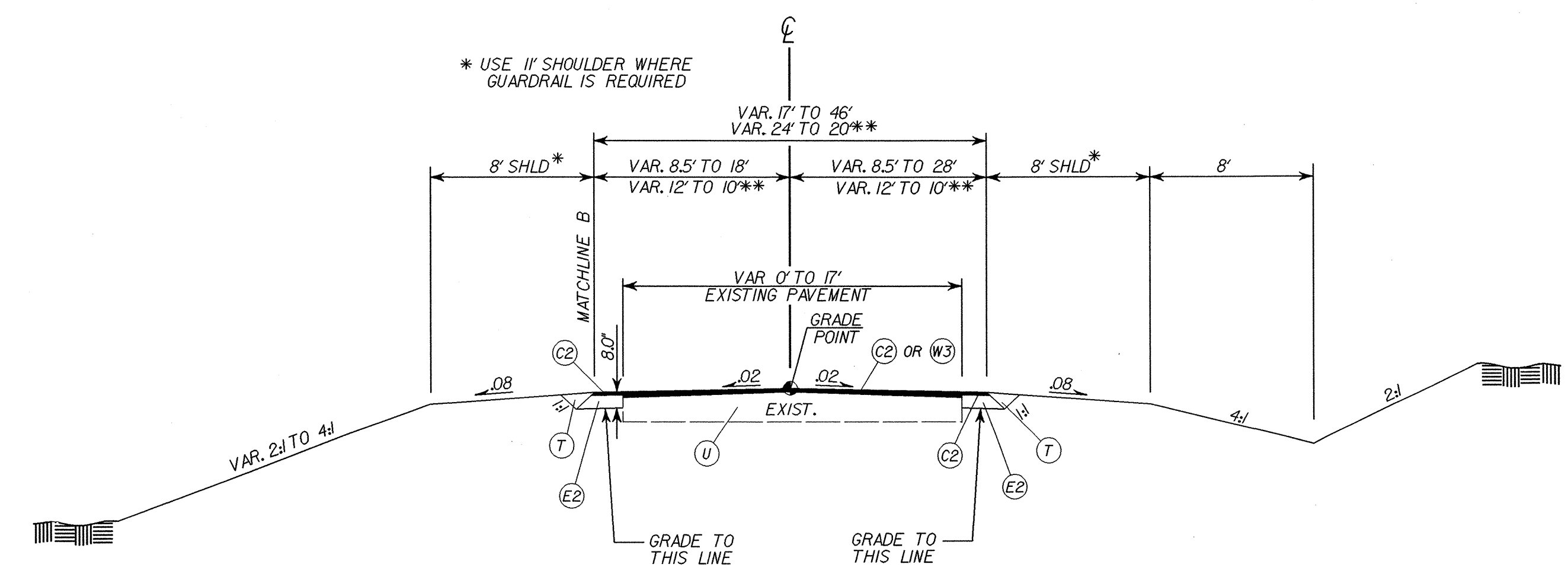
USE TYPICAL SECTION NO. 3:
 -Yrev- STA 11+00.00 TO STA 16+66.56
 -Y5- STA 14+50.00 TO STA 15+45.75

PAVEMENT DESIGNS	
Yrev	3" S9.5B 2.5" I19.0B 4" B25.0B
Y5	3" S9.5B 2.5" I19.0B 8" ABC



TYPICAL SECTION NO.4

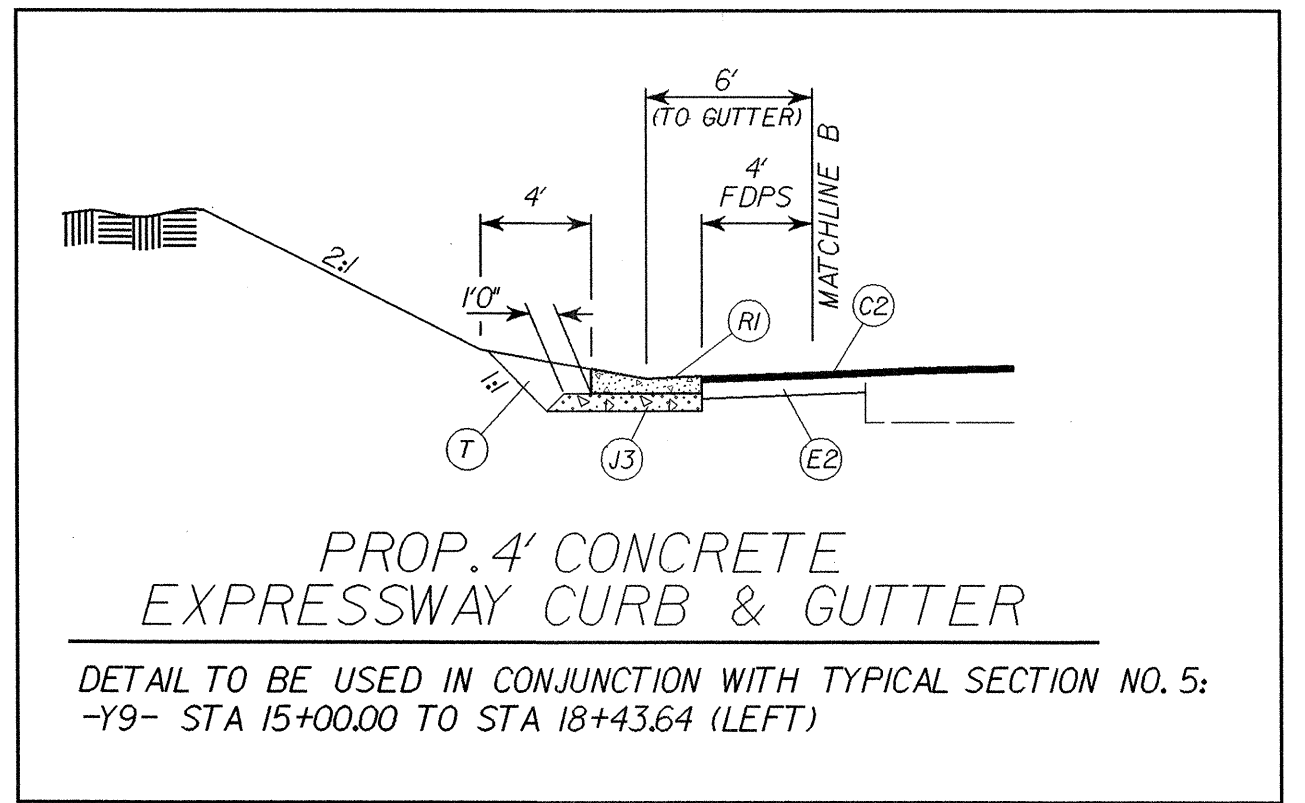
USE TYPICAL SECTION NO. 4:
 -Y2rev- STA 10+47.00 TO STA 16+26±



TYPICAL SECTION NO.5

USE TYPICAL SECTION NO. 5:
 -Y9- STA 14+83.72 TO STA 19+24.30
 ** -Y15- STA 13+70.00 TO STA 15+31.42

PAVEMENT SCHEDULE	
C2	3.0" S9.5B (TWO LAYERS)
D1	2.5" I19.0B
E1	4.0" B25.0B
E2	5.0" B25.0B
J1	8.0" ABC
J2	6.0" ABC
J3	VAR. DEPTH ABC
R1	EXPRESSWAY GUTTER
T	EARTH MATERIAL
U	EXISTING PAVEMENT
W2	WEDGING (-Y- LINES)
W3	WEDGING (-Y- LINES)



PROP. 4' CONCRETE EXPRESSWAY CURB & GUTTER
 DETAIL TO BE USED IN CONJUNCTION WITH TYPICAL SECTION NO. 5:
 -Y9- STA 15+00.00 TO STA 18+43.64 (LEFT)