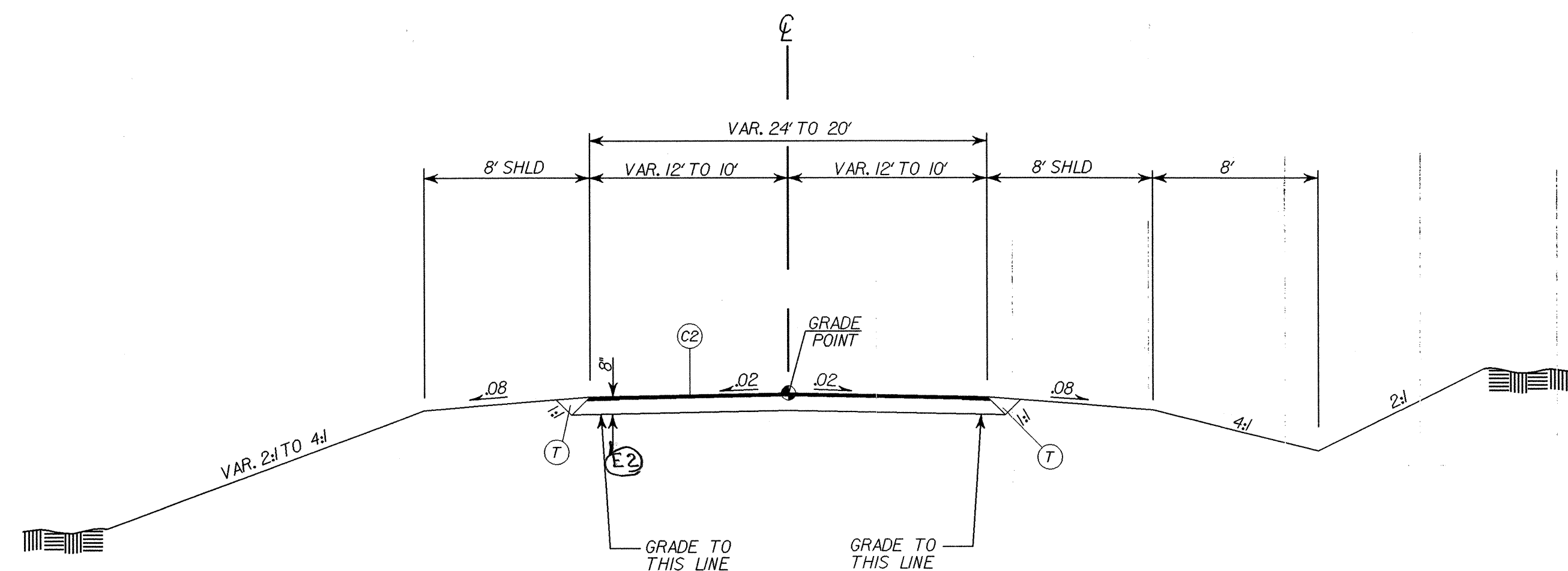


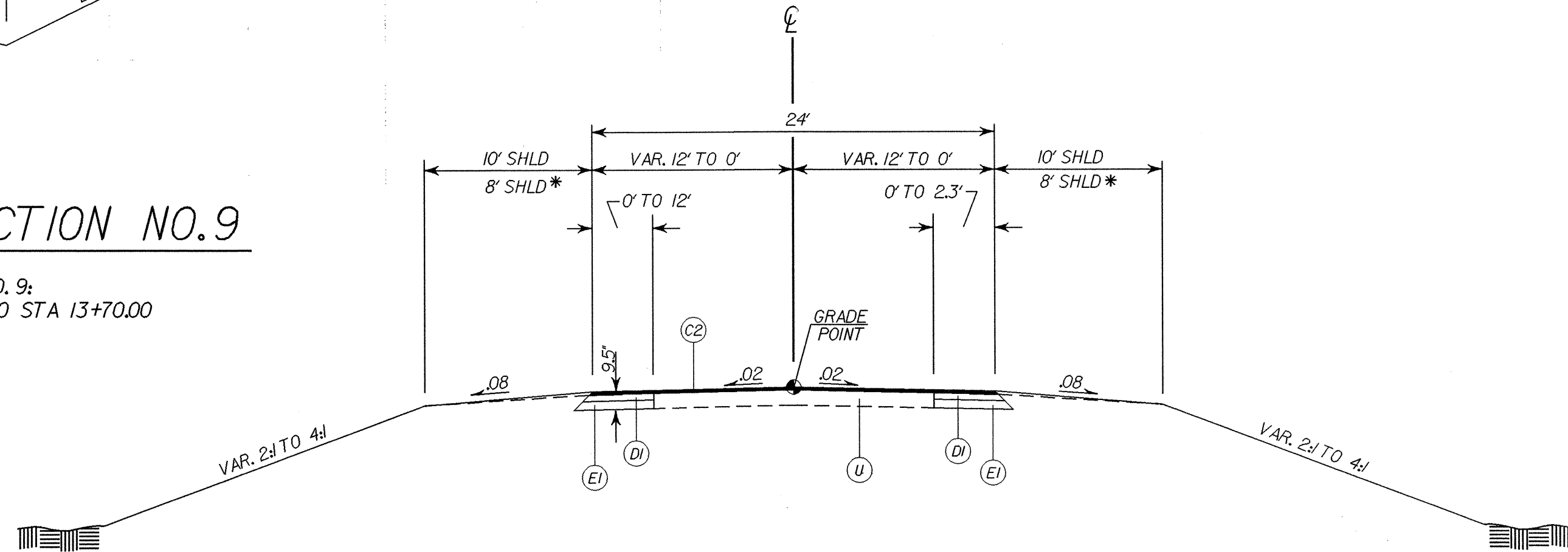
6/2/09

PROJECT REFERENCE NO. R-2911D	SHEET NO. 2-D
ROADWAY DESIGN ENGINEER DAVID W. BASS SEAL 20107 NORTH CAROLINA PROFESSIONAL ENGINEER 10/4/04	PAVEMENT DESIGN ENGINEER CLARK S. MORRISON SEAL 22896 NORTH CAROLINA PROFESSIONAL ENGINEER 11/6/04
PBSJ 1616 EAST MILBROOK ROAD, SUITE 310 RALEIGH, NORTH CAROLINA 27609	



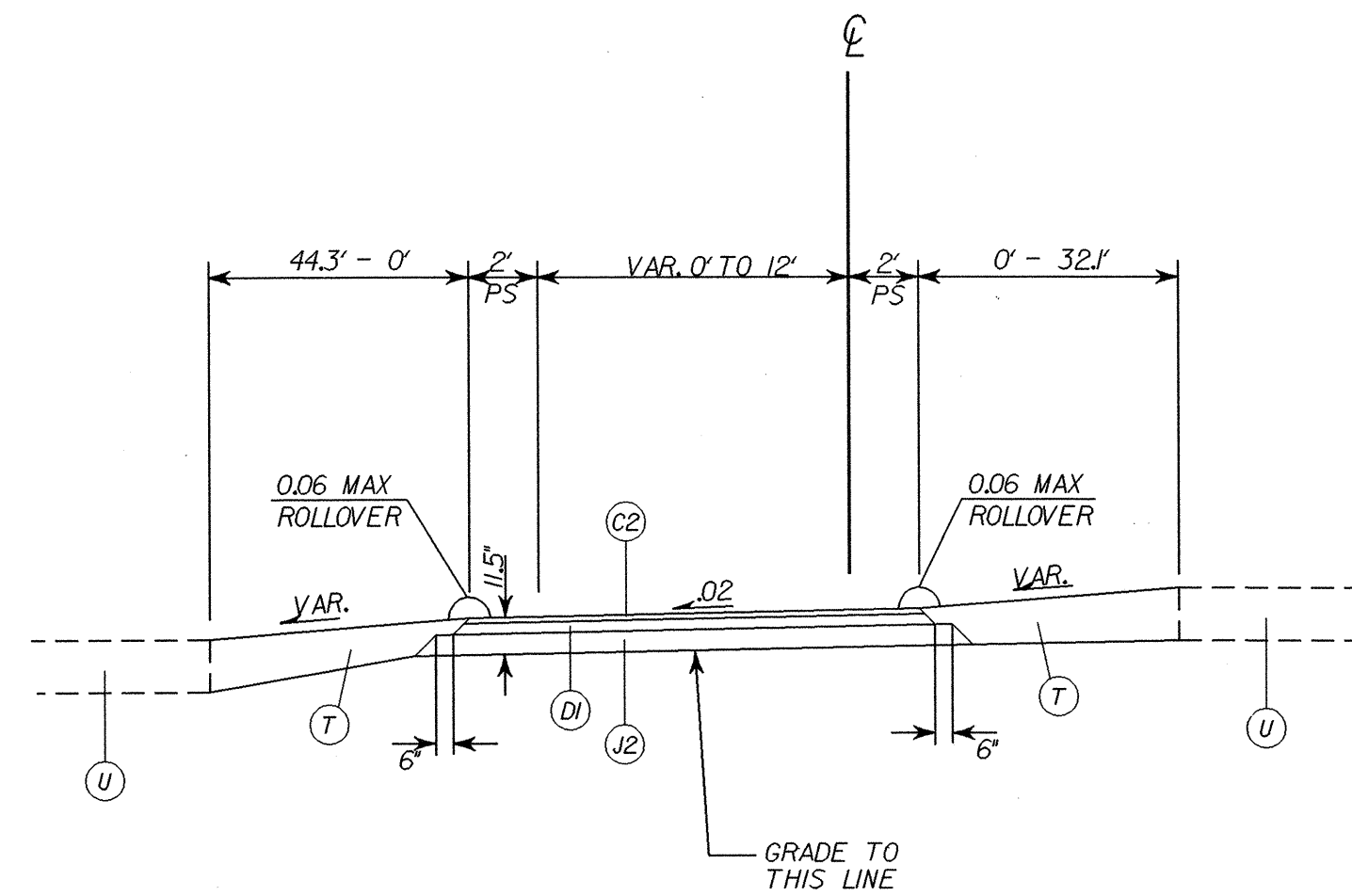
TYPICAL SECTION NO.9

USE TYPICAL SECTION NO. 9:
-Y15- STA 10+47.00 TO STA 13+70.00



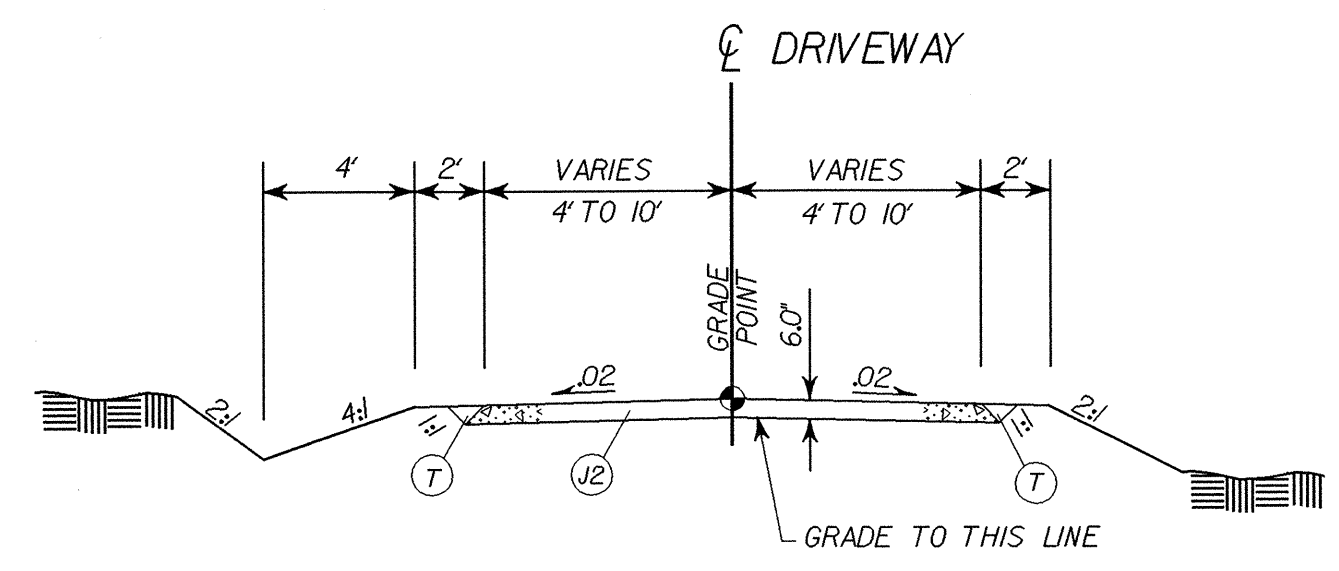
TYPICAL SECTION NO.10

USE TYPICAL SECTION NO. 10:
-Y3rev- STA 11+25.00 TO STA 12+82.20
*-Y2rev- STA 16+26± TO STA 17+50.00



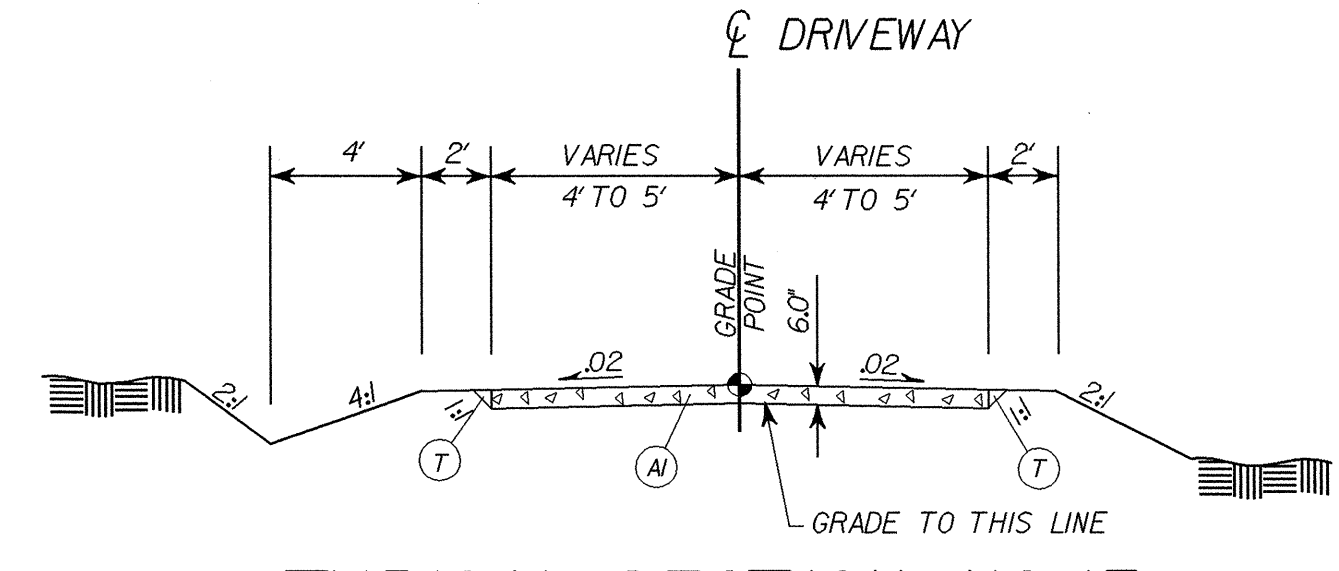
TYPICAL SECTION NO.11

USE TYPICAL SECTION NO. 11:
-XOVERI- STA 368+65.15 TO STA 377+34.70



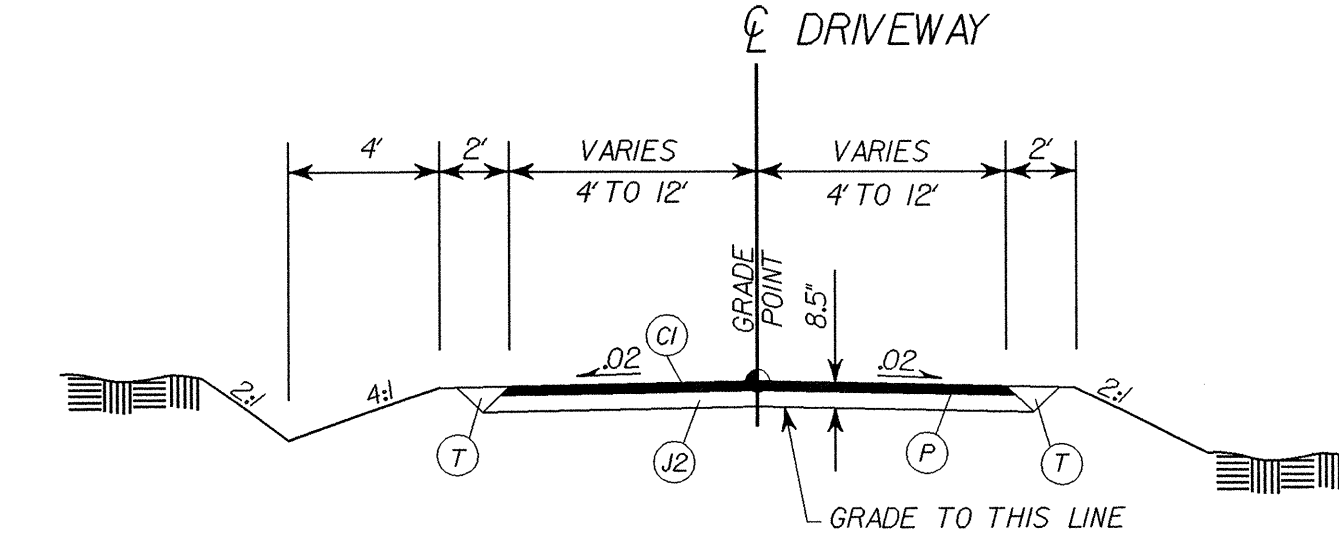
TYPICAL SECTION NO.12

USE TYPICAL SECTION NO. 12:
UNPAVED DRIVEWAYS



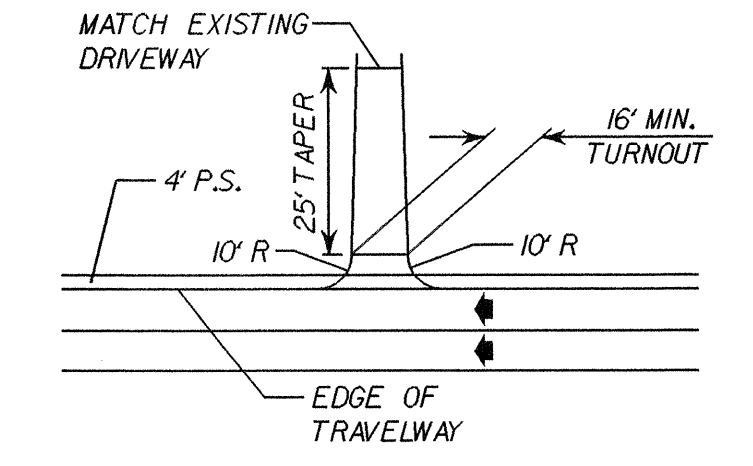
TYPICAL SECTION NO.13

USE TYPICAL SECTION NO. 13:
CONCRETE PAVED DRIVEWAYS



TYPICAL SECTION NO.14

USE TYPICAL SECTION NO. 14:
BST DRIVEWAYS



TYPICAL FOR DRIVEWAY TURNOUTS

04 OCT 2004 18:32
R:\p\2911d_r.dwg - tjp.dgn
18:32:00