

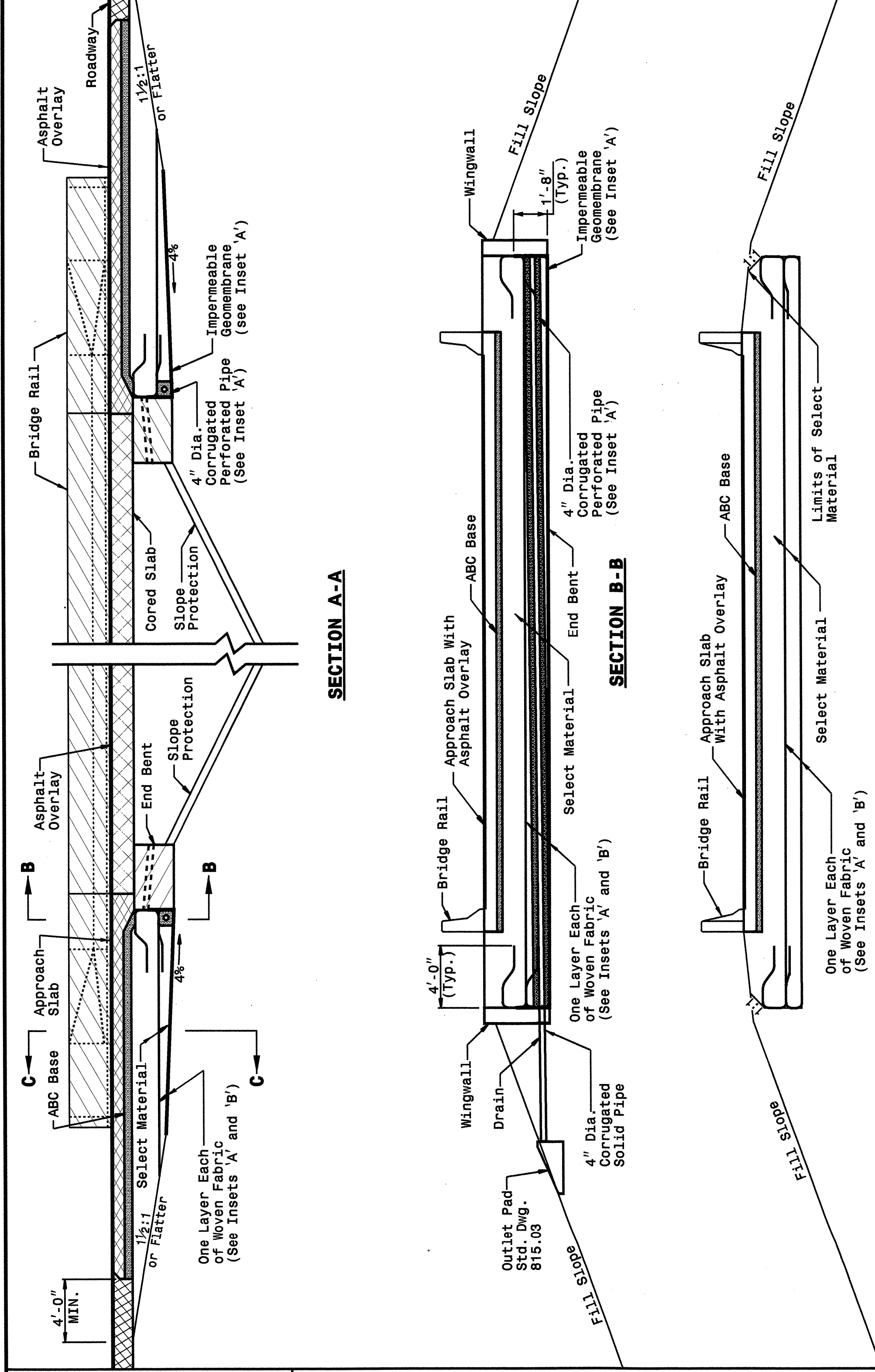
5/14/09  
 I:\JUL-2004\1127  
 151\151\series\stds\02\stds\02\stds\02\stds\02\422d10.dgn  
 encorad 3  
 AT 05212260

5/14/09

STATE OF  
 NORTH CAROLINA  
 DEPT. OF TRANSPORTATION  
 DIVISION OF HIGHWAYS  
 RALEIGH, N.C.

ENGLISH DETAIL DRAWING FOR  
**REINFORCED BRIDGE APPROACH FILLS**  
 CORED SLAB BRIDGES

SHEET 3 OF 4  
**422D10**



STATE OF  
 NORTH CAROLINA  
 DEPT. OF TRANSPORTATION  
 DIVISION OF HIGHWAYS  
 RALEIGH, N.C.

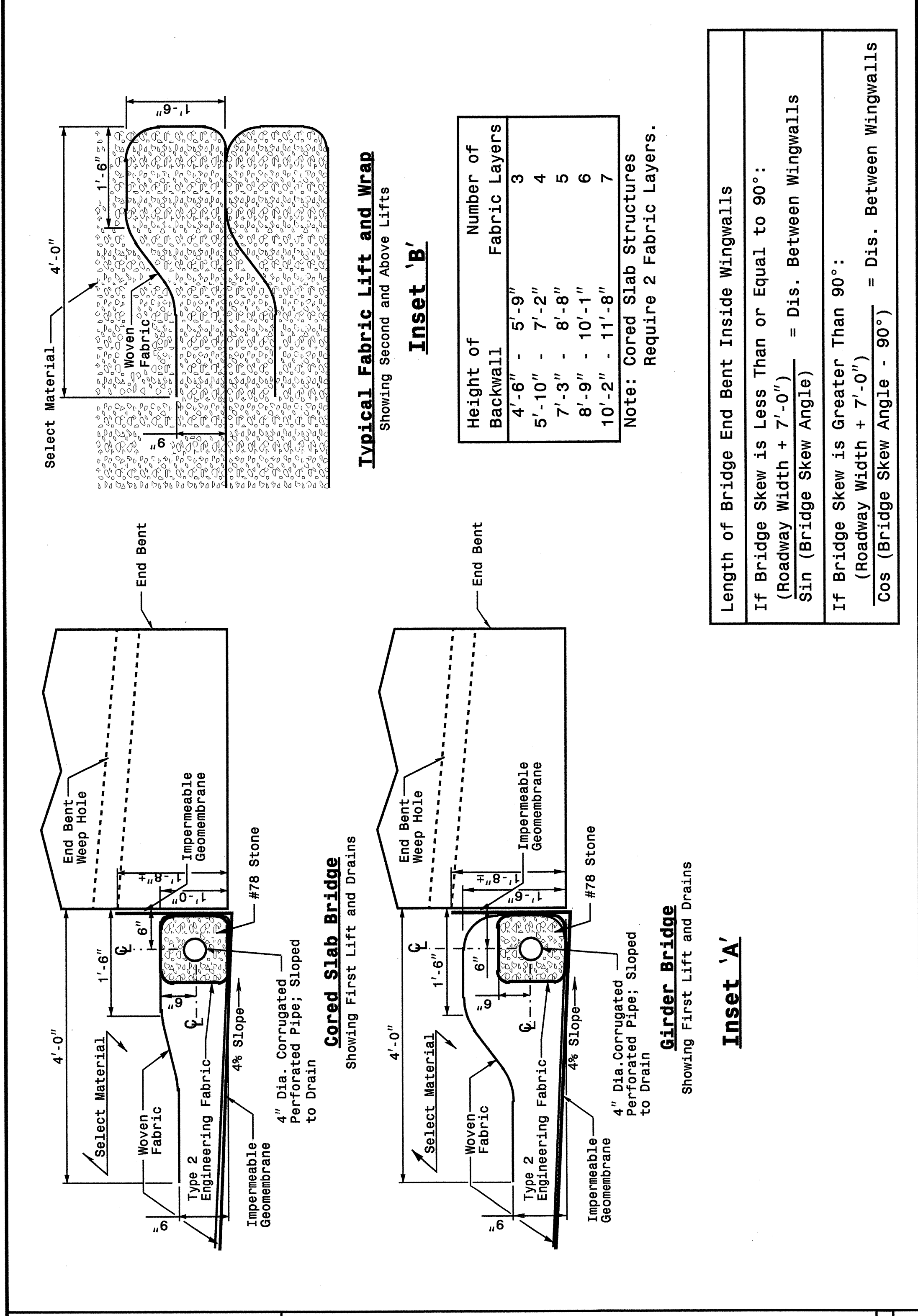
ENGLISH DETAIL DRAWING FOR  
**REINFORCED BRIDGE APPROACH FILLS**  
 CORED SLAB BRIDGES

SHEET 3 OF 4  
**422D10**

STATE OF  
 NORTH CAROLINA  
 DEPT. OF TRANSPORTATION  
 DIVISION OF HIGHWAYS  
 RALEIGH, N.C.

ENGLISH DETAIL DRAWING FOR  
**REINFORCED BRIDGE APPROACH FILLS**  
 INSETS AND CHARTS

SHEET 4 OF 4  
**422D10**

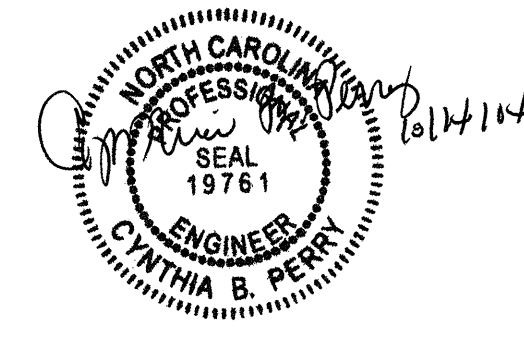


STATE OF  
 NORTH CAROLINA  
 DEPT. OF TRANSPORTATION  
 DIVISION OF HIGHWAYS  
 RALEIGH, N.C.

ENGLISH DETAIL DRAWING FOR  
**REINFORCED BRIDGE APPROACH FILLS**  
 INSETS AND CHARTS

SHEET 4 OF 4  
**422D10**

Note: To Be used only at the following structure locations:  
 - L Sta 304+22 LT  
 - L Sta 304+22 RT



DESIGN SERVICES UNIT  
 STANDARDS AND SPECIAL DESIGN  
 Office 919-250-4128 FAX 919-250-4119

**SEE PLATE FOR TITLE**

ORIGINAL BY: 2002 STANDARDS DATE: 01-15-02  
 MODIFIED BY: E.E. WARD DATE: 03-26-03  
 CHECKED BY: *Paul S. Hunt* DATE: 7/14/04  
 FILE SPEC.: stds\02stdstodetails\english\422d10.dgn