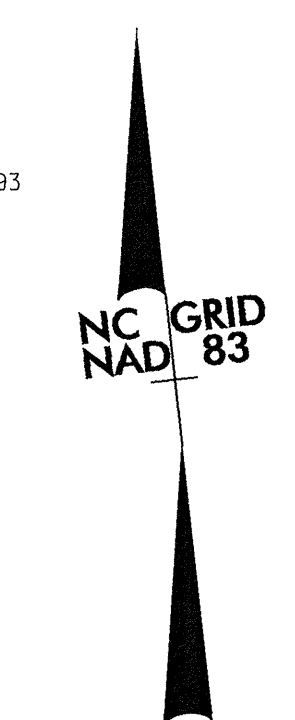


PROJECT REFERENCE NO. R-2911D	SHEET NO. 17
RW SHEET NO.	
ROADWAY DESIGN ENGINEER DAVID W. BASS 12/4/04	HYDRAULICS ENGINEER JAMES R. SOWERS 10/6/04
PBS POST, BUCKLEY, SCHUH & JERNIGAN, INC. 1616 EAST MILLBROOK ROAD, SUITE 310 RALEIGH, NORTH CAROLINA 27609	



-L-	
PI Sta 363+48.44	PI Sta 376+13.26
$\Delta = 5'10'' 02.1'' (LT)$	$\Delta = 7'27'' 56.5'' (RT)$
$D = 0'29'' 58.8''$	$D = 0'29'' 58.8''$
$L = 1,034.12'$	$L = 1,494.10'$
$T = 517.41'$	$T = 748.11'$
$R = 11,466.51'$	$R = 11,466.53'$
$SE = 0.02$	$SE = 0.02$
$S = 70 \text{ MPH+}$	$S = 70 \text{ MPH+}$

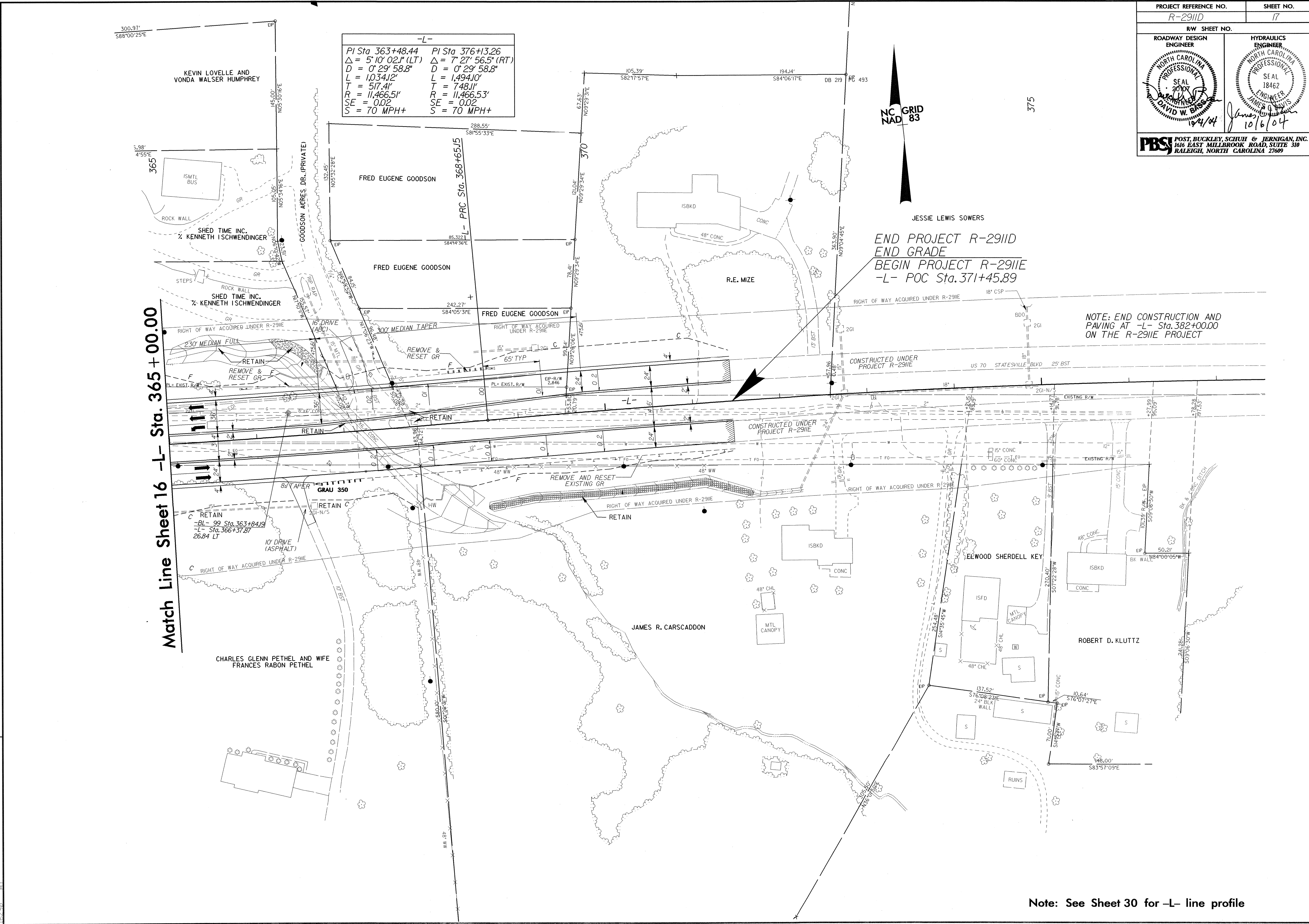
Match Line Sheet 16 -L- Sta. 365+00.00

JESSIE LEWIS SOWERS
 END PROJECT R-2911D
 END GRADE
 BEGIN PROJECT R-2911E
 -L- POC Sta. 371+45.89

NOTE: END CONSTRUCTION AND PAVING AT -L- Sta. 382+00.00 ON THE R-2911E PROJECT

REVISIONS

04-OCT-2004 18:44 R:\Roadway\Projects\R-2911\Drawings\17_psh.dgn



Note: See Sheet 30 for -L- line profile