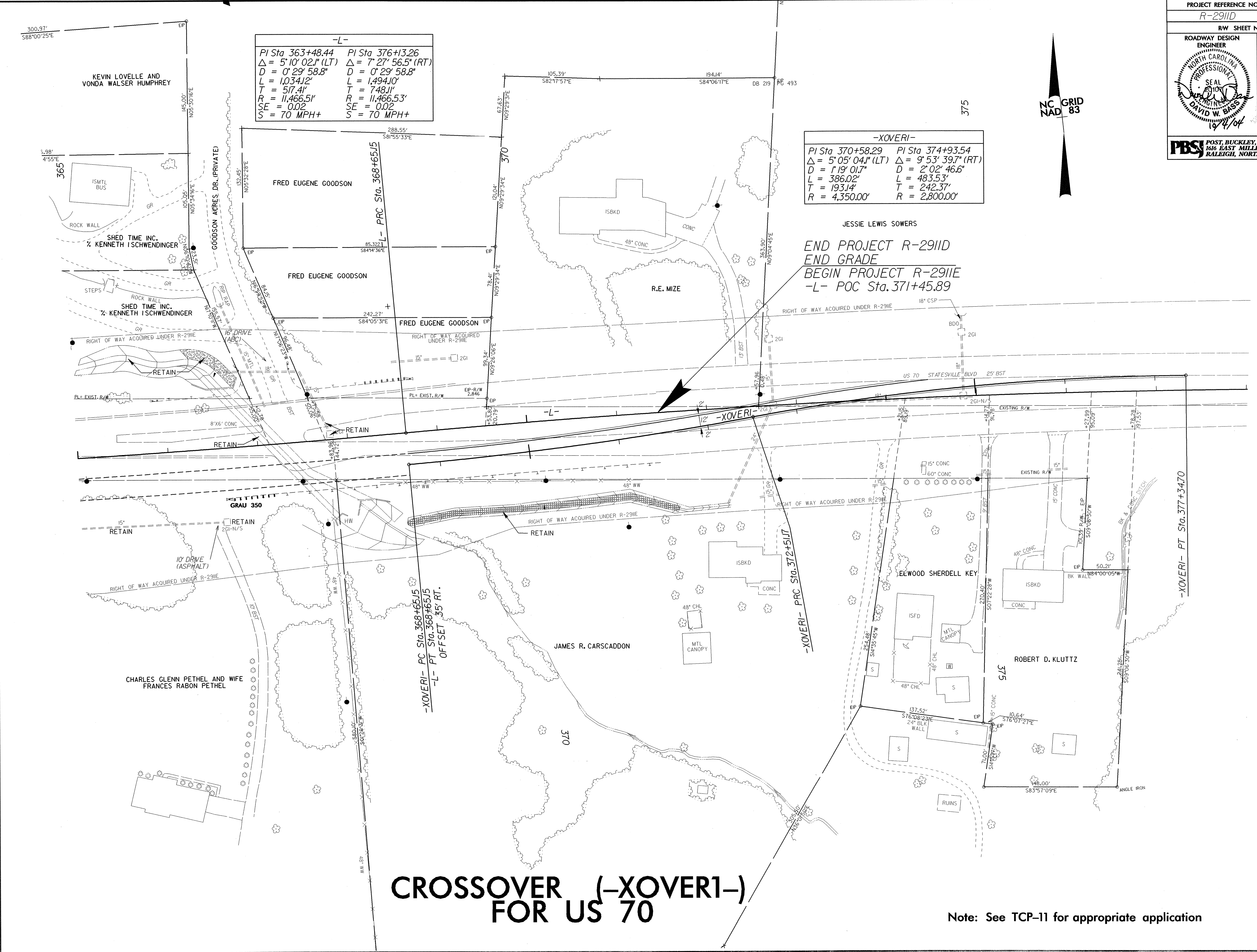


-L-	
PI Sta 363+48.44	PI Sta 376+13.26
$\Delta = 5^{\circ} 10' 02.1''$ (LT)	$\Delta = 7^{\circ} 27' 56.5''$ (RT)
D = 0' 29' 58.8"	D = 0' 29' 58.8"
L = 1,034.12'	L = 1,494.10'
T = 517.41'	T = 748.11'
R = 11,466.51'	R = 11,466.53'
SE = 0.02	SE = 0.02
S = 70 MPH+	S = 70 MPH+

-XOVERI-	
PI Sta 370+58.29	PI Sta 374+93.54
$\Delta = 5^{\circ} 05' 04.1''$ (LT)	$\Delta = 9^{\circ} 53' 39.7''$ (RT)
D = 1' 19' 01.7"	D = 2' 02' 46.6"
L = 386.02'	L = 483.53'
T = 193.14'	T = 242.37'
R = 4,350.00'	R = 2,800.00'

REVISIONS



CROSSOVER (-XOVERI-) FOR US 70

Note: See TCP-11 for appropriate application

04-OCT-2004 18:45
 H:\2004\09\04\Proj\2911D.rdw.s17a.psh.dgn