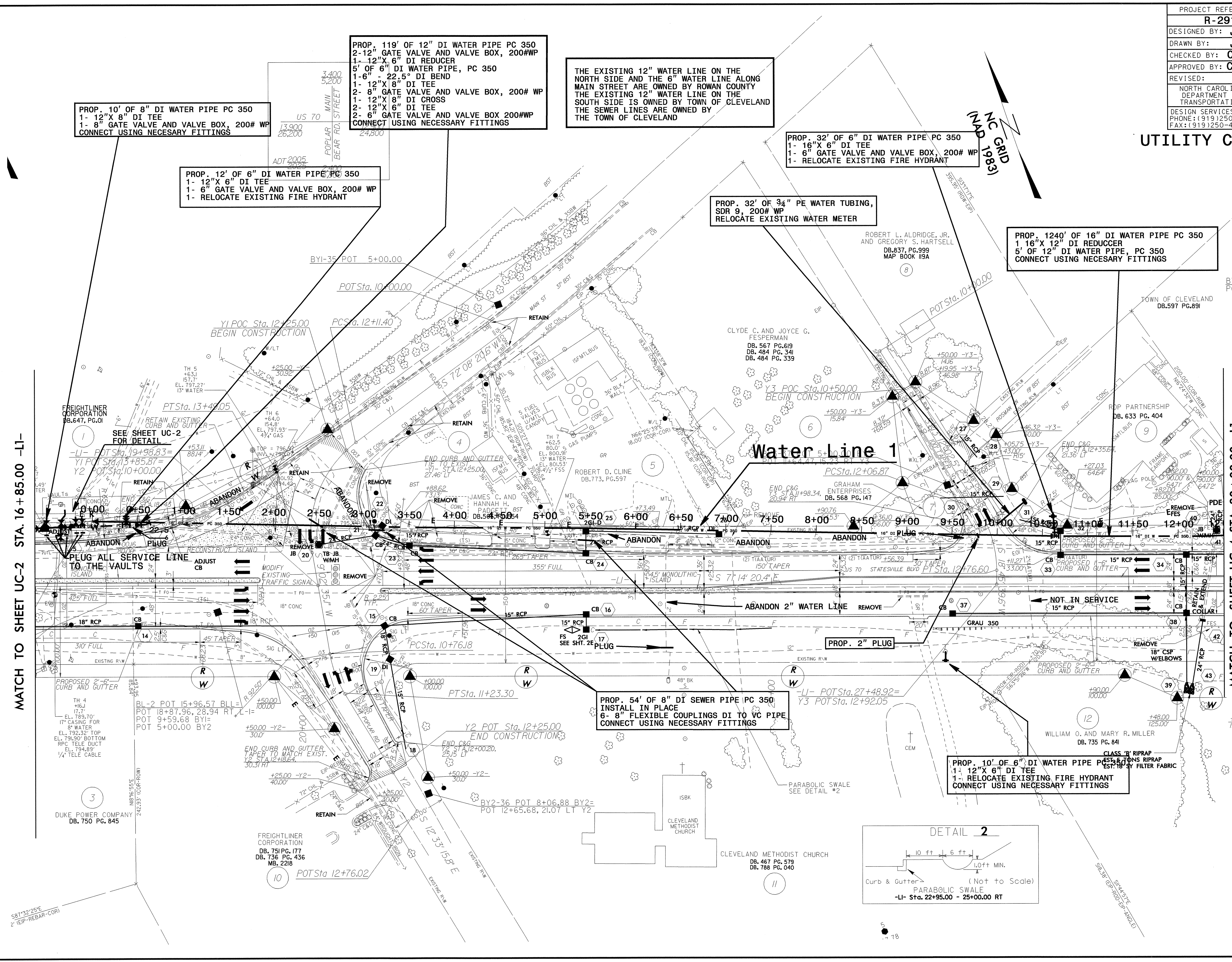


8/17/99

19-AUG-2004 14:34
R:\Utilities\RDY\RDY-UC3.DGN
L:\Projects\2004\RDY\RDY-UC3.DGN
L:\Projects\2004\RDY\RDY-UC3.DGN
L:\Projects\2004\RDY\RDY-UC3.DGN

PROJECT REFERENCE NO.	SHEET NO.
R-2911C	UC-3
DESIGNED BY: JH	
DRAWN BY: JH	
CHECKED BY: CDB	
APPROVED BY: CDB	
REVISED:	UTILITY CONSTRUCTION PLANS ONLY
NORTH CAROLINA DEPARTMENT OF TRANSPORTATION	
DESIGN SERVICES UNIT PHONE: (919) 250-4128 FAX: (919) 250-4119	

UTILITY CONSTRUCTION



PROP. 10' OF 8" DI WATER PIPE PC 350
1- 12" X 8" DI TEE
1- 8" GATE VALVE AND VALVE BOX, 200# WP
CONNECT USING NECESSARY FITTINGS

PROP. 119' OF 12" DI WATER PIPE PC 350
2- 12" GATE VALVE AND VALVE BOX, 200# WP
1- 12" X 6" DI REDUCER
5' OF 6" DI WATER PIPE, PC 350
1- 6" - 22.5° DI BEND
1- 12" X 8" DI TEE
2- 8" GATE VALVE AND VALVE BOX, 200# WP
1- 12" X 8" DI CROSS
2- 12" X 6" DI TEE
2- 6" GATE VALVE AND VALVE BOX 200# WP
CONNECT USING NECESSARY FITTINGS

THE EXISTING 12" WATER LINE ON THE NORTH SIDE AND THE 6" WATER LINE ALONG MAIN STREET ARE OWNED BY ROWAN COUNTY THE EXISTING 12" WATER LINE ON THE SOUTH SIDE IS OWNED BY TOWN OF CLEVELAND THE SEWER LINES ARE OWNED BY THE TOWN OF CLEVELAND

PROP. 12' OF 6" DI WATER PIPE PC 350
1- 12" X 6" DI TEE
1- 6" GATE VALVE AND VALVE BOX, 200# WP
1- RELOCATE EXISTING FIRE HYDRANT

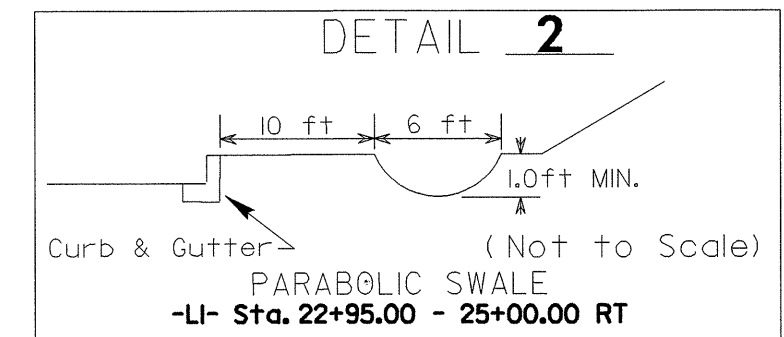
PROP. 32' OF 3/4" PE WATER TUBING, SDR 9, 200# WP
RELOCATE EXISTING WATER METER

PROP. 32' OF 6" DI WATER PIPE PC 350
1- 16" X 6" DI TEE
1- 6" GATE VALVE AND VALVE BOX, 200# WP
1- RELOCATE EXISTING FIRE HYDRANT

PROP. 1240' OF 16" DI WATER PIPE PC 350
1 16" X 12" DI REDUCER
5' OF 12" DI WATER PIPE, PC 350
CONNECT USING NECESSARY FITTINGS

PROP. 54' OF 8" DI SEWER PIPE IPC 350
INSTALL IN PLACE
6- 8" FLEXIBLE COUPLINGS DI TO VC PIPE
CONNECT USING NECESSARY FITTINGS

PROP. 10' OF 6" DI WATER PIPE PC 350
1- 12" X 6" DI TEE
1- RELOCATE EXISTING FIRE HYDRANT
CONNECT USING NECESSARY FITTINGS



MATCH TO SHEET UC-2 STA. 16+85.00 -11-

MATCH TO SHEET UC-4 STA. 30+00.00 -11-