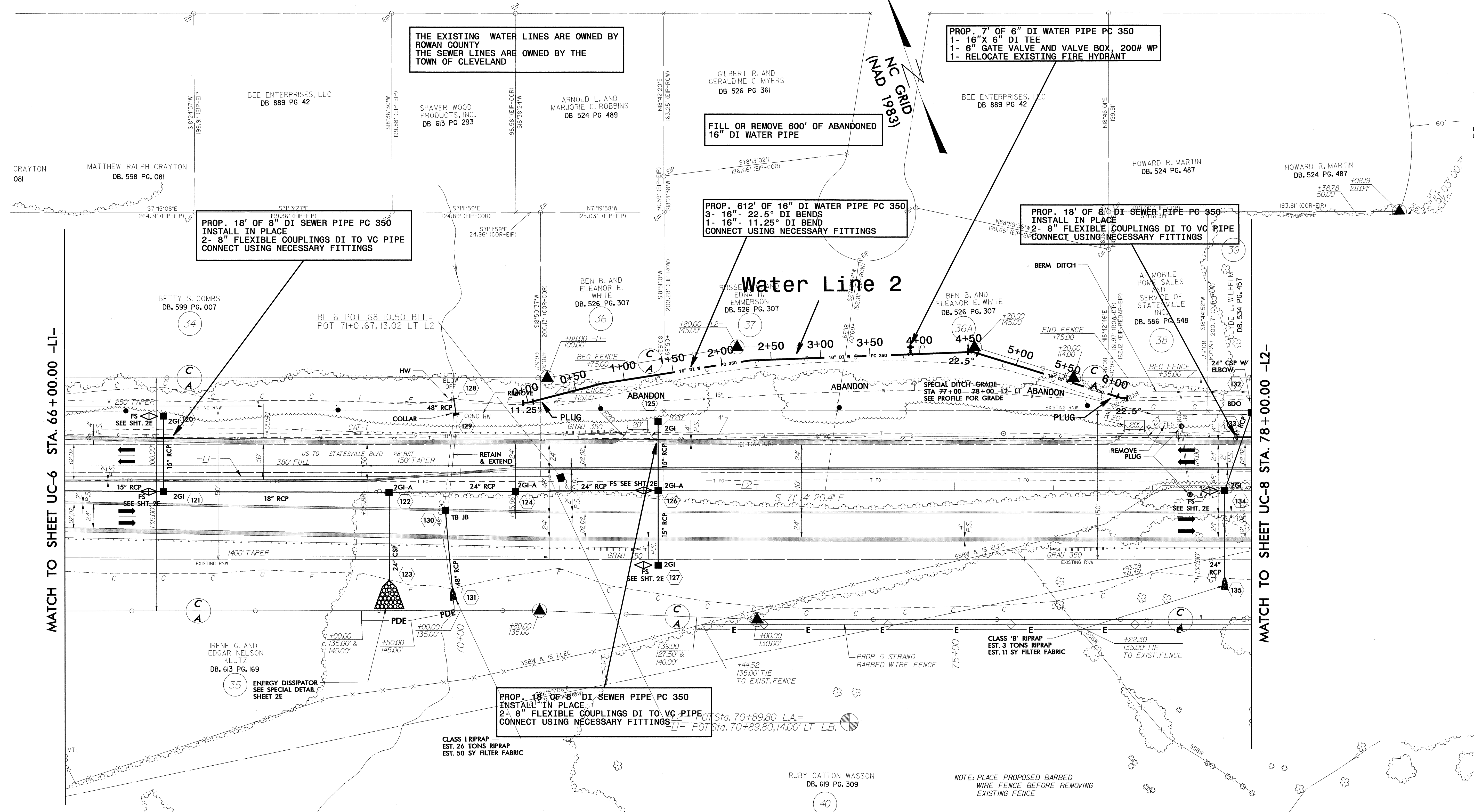


8/17/99

18-AUG-2004 08:32 R:\Utilities\Road\Uti\_Prog\NPR01\NR2911c.RDY UC7.DGN

PROJECT REFERENCE NO.	SHEET NO.	
R-2911C	UC-7	
DESIGNED BY: JH		
DRAWN BY: JH		
CHECKED BY: CDB		
APPROVED BY: CDB		
REVISED:		
NORTH CAROLINA DEPARTMENT OF TRANSPORTATION DESIGN SERVICES UNIT PHONE: (919)250-4128 FAX: (919)250-4119		UTILITY CONSTRUCTION PLANS ONLY

# UTILITY CONSTRUCTION



## Water Line 2

PROP. 7' OF 6" DI WATER PIPE PC 350  
 1- 16" X 6" DI TEE  
 1- 6" GATE VALVE AND VALVE BOX, 200# WP  
 1- RELOCATE EXISTING FIRE HYDRANT

FILL OR REMOVE 600' OF ABANDONED  
 16" DI WATER PIPE

PROP. .612' OF 16" DI WATER PIPE PC 350  
 3- 16" - 22.5° DI BENDS  
 1- 16" - 11.25° DI BEND  
 CONNECT USING NECESSARY FITTINGS

PROP. 18' OF 8" DI SEWER PIPE PC 350  
 INSTALL IN PLACE  
 2- 8" FLEXIBLE COUPLINGS DI TO VC PIPE  
 CONNECT USING NECESSARY FITTINGS

PROP. 18' OF 8" DI SEWER PIPE PC 350  
 INSTALL IN PLACE  
 2- 8" FLEXIBLE COUPLINGS DI TO VC PIPE  
 CONNECT USING NECESSARY FITTINGS

THE EXISTING WATER LINES ARE OWNED BY  
 ROWAN COUNTY  
 THE SEWER LINES ARE OWNED BY THE  
 TOWN OF CLEVELAND

PROP. 18' OF 8" DI SEWER PIPE PC 350  
 INSTALL IN PLACE  
 2- 8" FLEXIBLE COUPLINGS DI TO VC PIPE  
 CONNECT USING NECESSARY FITTINGS

CLASS 'B' RIPRAP  
 EST. 3 TONS RIPRAP  
 EST. 11 SY FILTER FABRIC

CLASS I RIPRAP  
 EST. 26 TONS RIPRAP  
 EST. 50 SY FILTER FABRIC

NOTE: PLACE PROPOSED BARBED  
 WIRE FENCE BEFORE REMOVING  
 EXISTING FENCE

MATCH TO SHEET UC-6 STA. 66+00.00 -L1-

MATCH TO SHEET UC-8 STA. 78+00.00 -L2-