

PROJECT REFERENCE NO.	SHEET NO.
R-2911C	UC-8
DESIGNED BY: JH	
DRAWN BY: JH	
CHECKED BY: CDB	
APPROVED BY: CDB	
REVISED:	
NORTH CAROLINA DEPARTMENT OF TRANSPORTATION DESIGN SERVICES UNIT PHONE: (919) 250-4128 FAX: (919) 250-4119	
UTILITY CONSTRUCTION PLANS ONLY	

UTILITY CONSTRUCTION

THE EXISTING WATER LINES ARE OWNED BY ROWAN COUNTY
 THE SEWER LINES ARE OWNED BY THE TOWN OF CLEVELAND

FILL OR REMOVE 345' OF ABANDONED 16" DI WATER PIPE

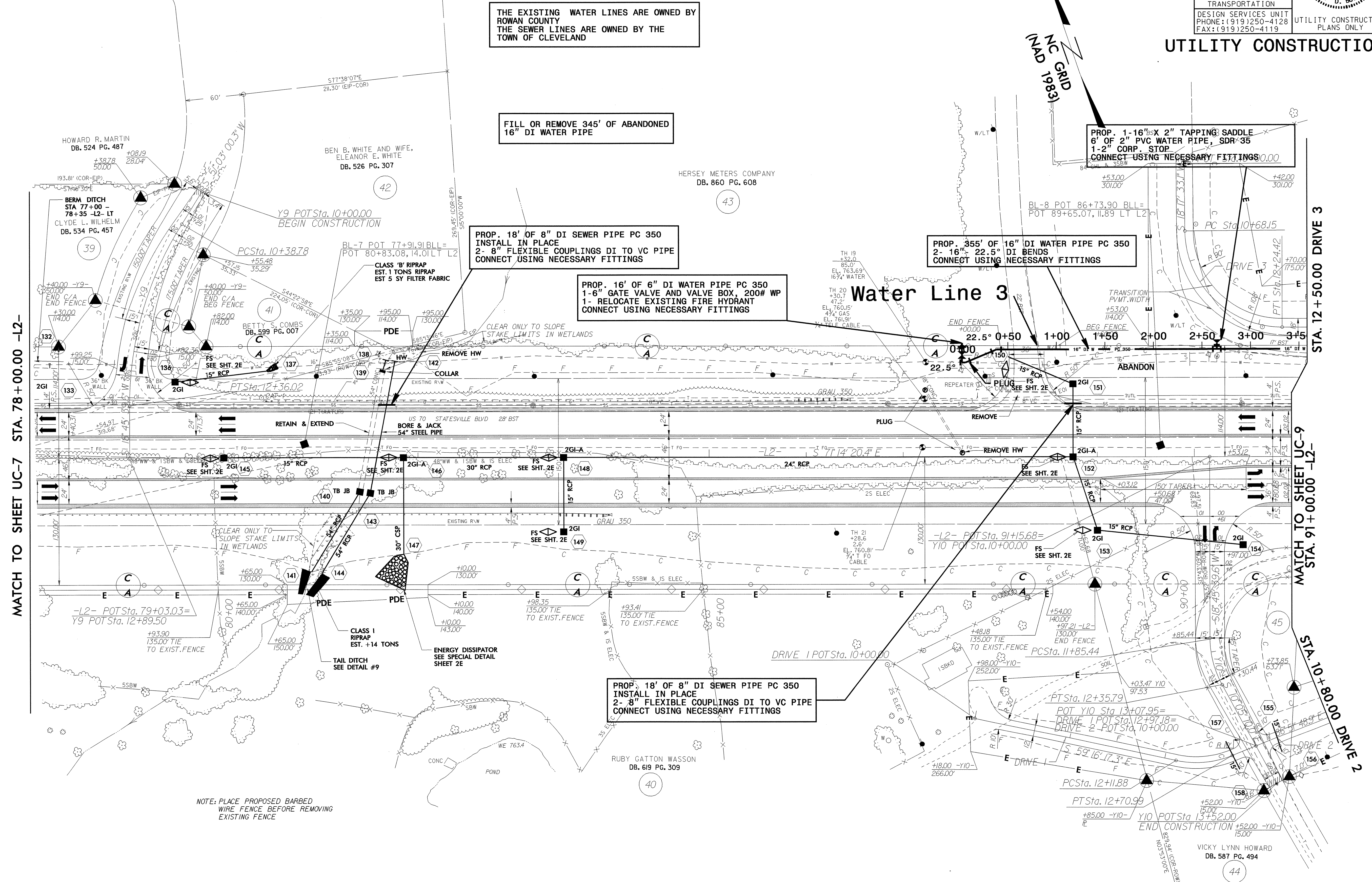
PROP. 18' OF 8" DI SEWER PIPE PC 350
 INSTALL IN PLACE
 2- 8" FLEXIBLE COUPLINGS DI TO VC PIPE
 CONNECT USING NECESSARY FITTINGS

PROP. 16' OF 6" DI WATER PIPE PC 350
 1- 6" GATE VALVE AND VALVE BOX, 200# WP
 1- RELOCATE EXISTING FIRE HYDRANT
 CONNECT USING NECESSARY FITTINGS

PROP. 355' OF 16" DI WATER PIPE PC 350
 2- 16" 22.5° DI BENDS
 CONNECT USING NECESSARY FITTINGS

PROP. 1- 16" X 2" TAPPING SADDLE
 6' OF 2" PVC WATER PIPE, SDR-35
 1- 2" CORP. STOP
 CONNECT USING NECESSARY FITTINGS

Water Line 3



MATCH TO SHEET UC-7 STA. 78+00.00 -L2-

MATCH TO SHEET UC-9 STA. 91+00.00 -L2-

STA. 10+80.00 DRIVE 2

STA. 12+50.00 DRIVE 3

NOTE: PLACE PROPOSED BARBED WIRE FENCE BEFORE REMOVING EXISTING FENCE