

8/17/99

19-AUG-2004 08:29  
RA\Utilities\Proj\29111c-RDY-UC9.DGN  
Plot Date: 8/17/99  
Plot Time: 11:52:16  
Plot User: jredman

PROJECT REFERENCE NO.	SHEET NO.
R-2911C	UC-9
DESIGNED BY: JH	
DRAWN BY: JH	
CHECKED BY: CDB	
APPROVED BY: CDB	
REVISED:	
NORTH CAROLINA DEPARTMENT OF TRANSPORTATION	
DESIGN SERVICES UNIT PHONE: (919) 250-4128 FAX: (919) 250-4119	
UTILITY CONSTRUCTION PLANS ONLY	

# UTILITY CONSTRUCTION

THE EXISTING WATER LINES ARE OWNED BY ROWAN COUNTY  
THE SEWER LINES ARE OWNED BY THE TOWN OF CLEVELAND

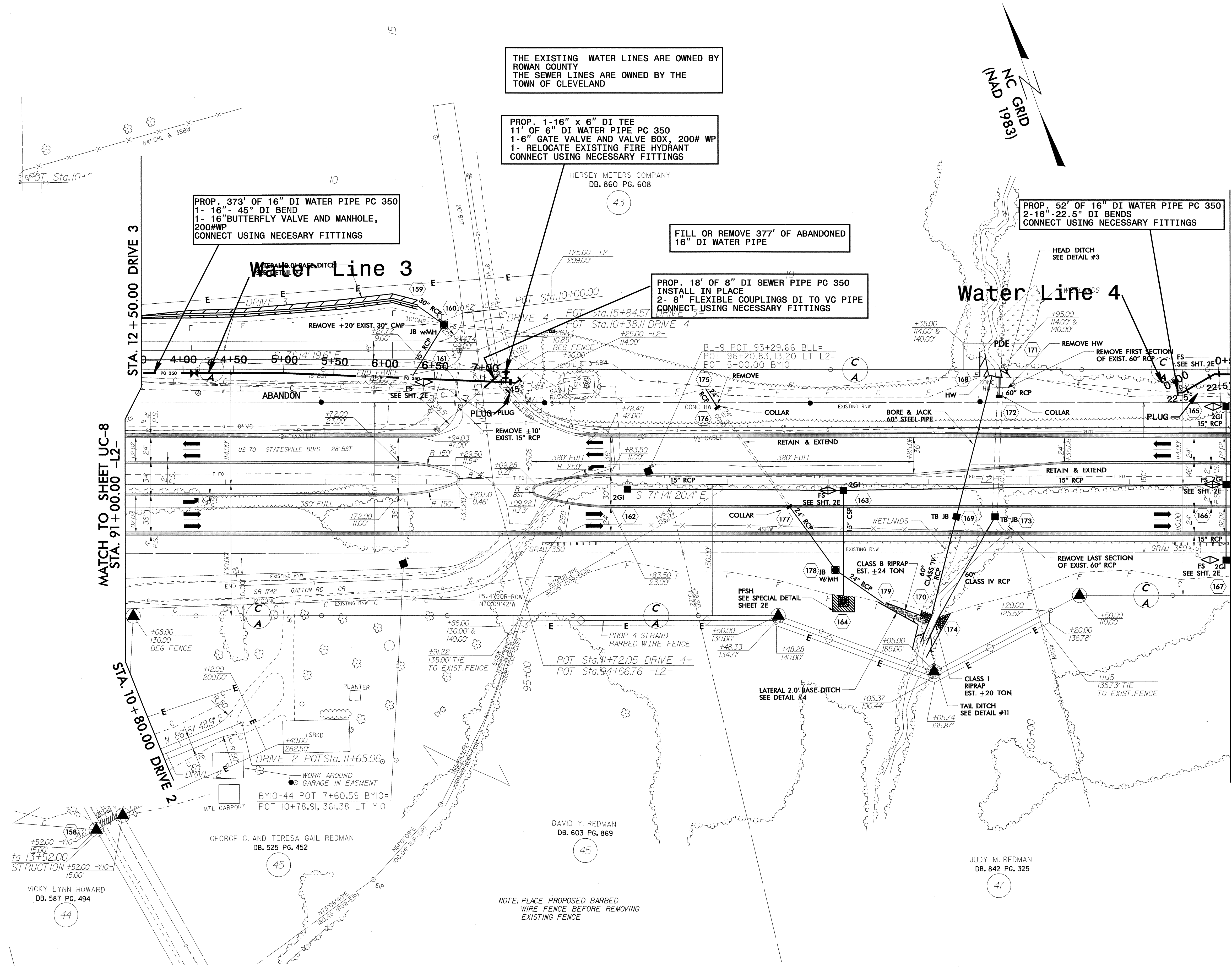
PROP. 1-16" x 6" DI TEE  
11' OF 6" DI WATER PIPE PC 350  
1-6" GATE VALVE AND VALVE BOX, 200# WP  
1- RELOCATE EXISTING FIRE HYDRANT  
CONNECT USING NECESSARY FITTINGS

PROP. 373' OF 16" DI WATER PIPE PC 350  
1- 16"- 45° DI BEND  
1- 16" BUTTERFLY VALVE AND MANHOLE, 200#WP  
CONNECT USING NECESSARY FITTINGS

FILL OR REMOVE 377' OF ABANDONED 16" DI WATER PIPE

PROP. 18' OF 8" DI SEWER PIPE PC 350  
INSTALL IN PLACE  
2- 8" FLEXIBLE COUPLINGS DI TO VC PIPE  
CONNECT USING NECESSARY FITTINGS

PROP. 52' OF 16" DI WATER PIPE PC 350  
2- 16"- 22.5° DI BENDS  
CONNECT USING NECESSARY FITTINGS



MATCH TO SHEET UC-8  
STA. 91+00.00 -L2-

MATCH TO SHEET UC-10  
STA. 102+00.00 -L2-

NOTE: PLACE PROPOSED BARBED WIRE FENCE BEFORE REMOVING EXISTING FENCE

JUDY M. REDMAN  
DB. 842 PG. 325

47