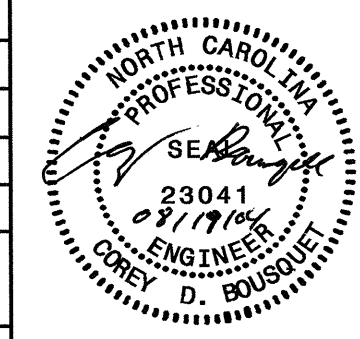
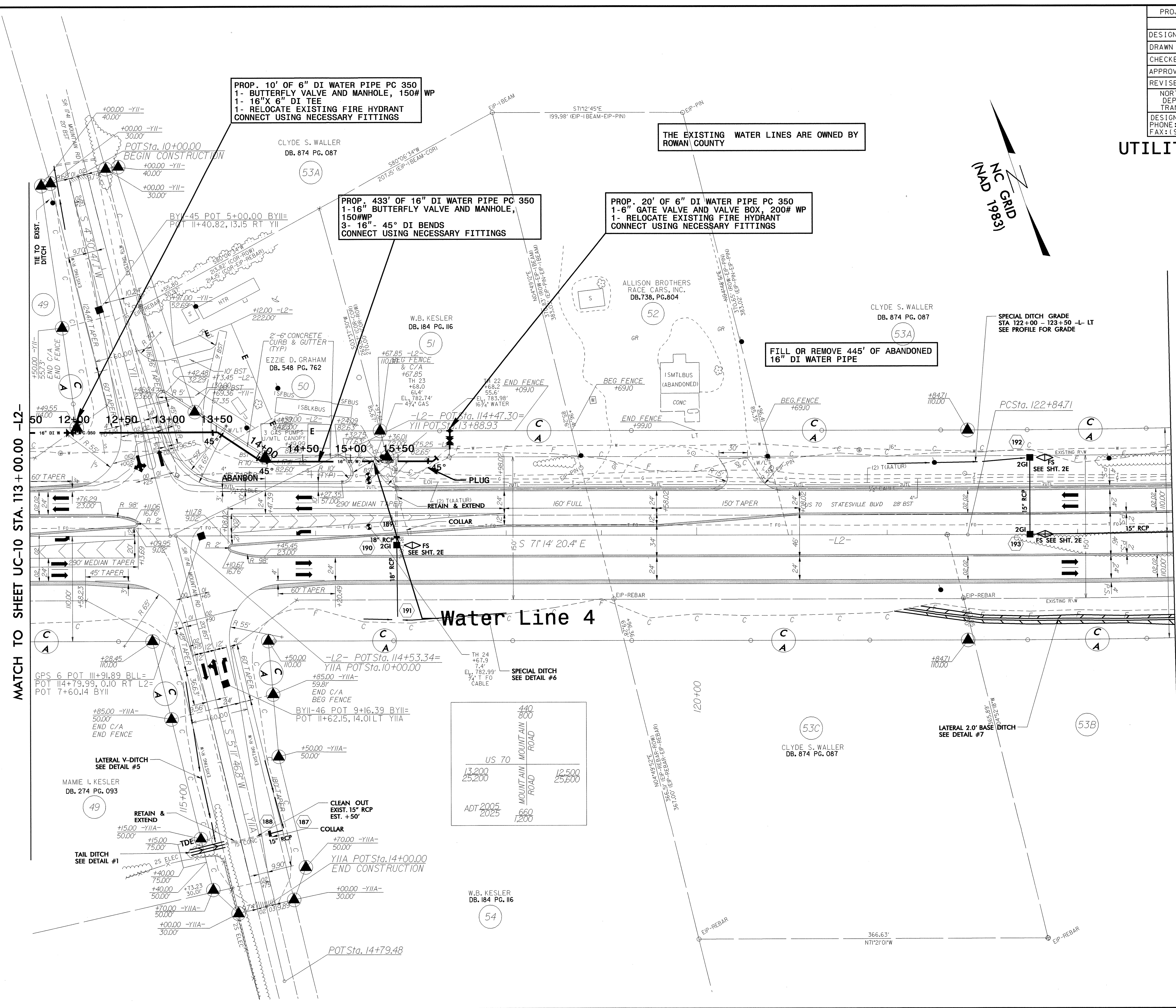


8/17/99

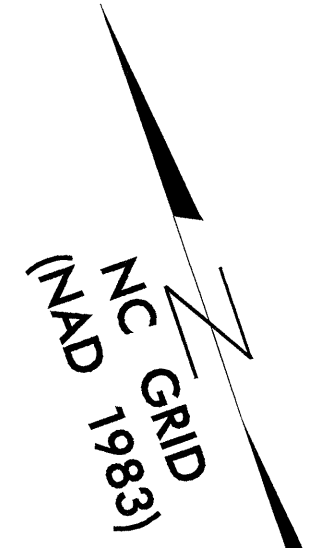
19-AUG-2004 08:26
C:\Utilities\RDY_11\RDY_UC11.DGN
RDY_11\RDY_UC11.DWG

PROJECT REFERENCE NO.	SHEET NO.
R-2911C	UC-11
DESIGNED BY: JH	
DRAWN BY: JH	
CHECKED BY: CDB	
APPROVED BY: CDB	
REVISED:	
NORTH CAROLINA DEPARTMENT OF TRANSPORTATION DESIGN SERVICES UNIT PHONE: (919)250-4128 FAX: (919)250-4119	
UTILITY CONSTRUCTION PLANS ONLY	

UTILITY CONSTRUCTION



THE EXISTING WATER LINES ARE OWNED BY ROWAN COUNTY



MATCH TO SHEET UC-10 STA. 113+00.00 -L2-

MATCH TO SHEET UC-12 STA. 125+00.00 -L2-

Water Line 4

440	800
US 70	
13,200	12,500
25,200	25,600
ADT 2005	660
2025	1,200

W.B. KESLER
DB. 184 PG. 116

54

CLYDE S. WALLER
DB. 874 PG. 087

53A

FILL OR REMOVE 445' OF ABANDONED 16" DI WATER PIPE

PROP. 20' OF 6" DI WATER PIPE PC 350
1- 6" GATE VALVE AND VALVE BOX, 200# WP
1- RELOCATE EXISTING FIRE HYDRANT
CONNECT USING NECESSARY FITTINGS

PROP. 433' OF 16" DI WATER PIPE PC 350
1- 16" BUTTERFLY VALVE AND MANHOLE,
150#WP
3- 16" 45° DI BENDS
CONNECT USING NECESSARY FITTINGS

PROP. 10' OF 6" DI WATER PIPE PC 350
1- BUTTERFLY VALVE AND MANHOLE, 150# WP
1- 16" X 6" DI TEE
1- RELOCATE EXISTING FIRE HYDRANT
CONNECT USING NECESSARY FITTINGS

LATERAL 2.0' BASE DITCH
SEE DETAIL #7

SPECIAL DITCH
SEE DETAIL #6

LATERAL V-DITCH
SEE DETAIL #5

MAMIE I. KESLER
DB. 274 PG. 093

49

TAIL DITCH
SEE DETAIL #1

RETAIN & EXTEND

CLEAN OUT EXIST. 15" RCP EST. +50'

COLLAR

Y11A POT Sta. 14+00.00
END CONSTRUCTION

POT Sta. 14+79.48

SPECIAL DITCH GRADE
STA 122+00 - 123+50 -L- LT
SEE PROFILE FOR GRADE

PC Sta. 122+84.71

2GI
SEE SHT. 2E

2GI
SEE SHT. 2E

2GI
SEE SHT. 2E

2GI
SEE SHT. 2E

2GI
SEE SHT. 2E

2GI
SEE SHT. 2E

2GI
SEE SHT. 2E

2GI
SEE SHT. 2E

2GI
SEE SHT. 2E

2GI
SEE SHT. 2E

2GI
SEE SHT. 2E

2GI
SEE SHT. 2E

2GI
SEE SHT. 2E

2GI
SEE SHT. 2E

2GI
SEE SHT. 2E