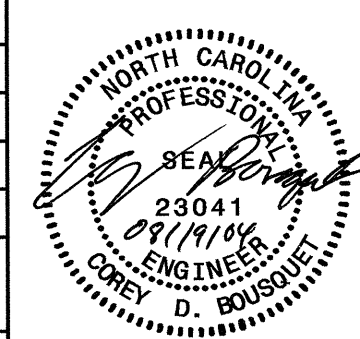
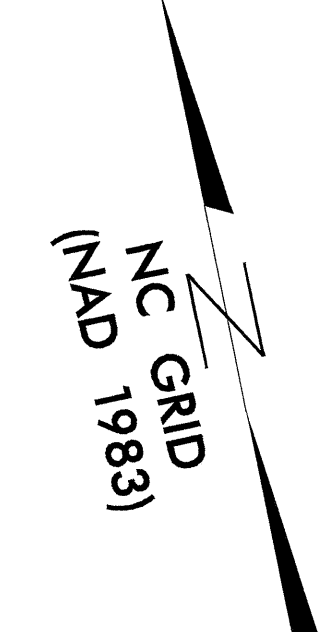


8/17/99

19-AUG-2004 08:25
R:\Utilities\RDY_UC16.DGN
AT 0521286

PROJECT REFERENCE NO.	SHEET NO.
R-2911C	UC-16
DESIGNED BY: JH	
DRAWN BY: JH	
CHECKED BY: CDB	
APPROVED BY: CDB	
REVISED:	
NORTH CAROLINA DEPARTMENT OF TRANSPORTATION	
DESIGN SERVICES UNIT PHONE: (919) 250-4128 FAX: (919) 250-4119	
UTILITY CONSTRUCTION PLANS ONLY	

UTILITY CONSTRUCTION



THE EXISTING WATER LINES ARE OWNED BY ROWAN COUNTY

FILL OR REMOVE 130' OF ABANDONED 16" DI WATER PIPE

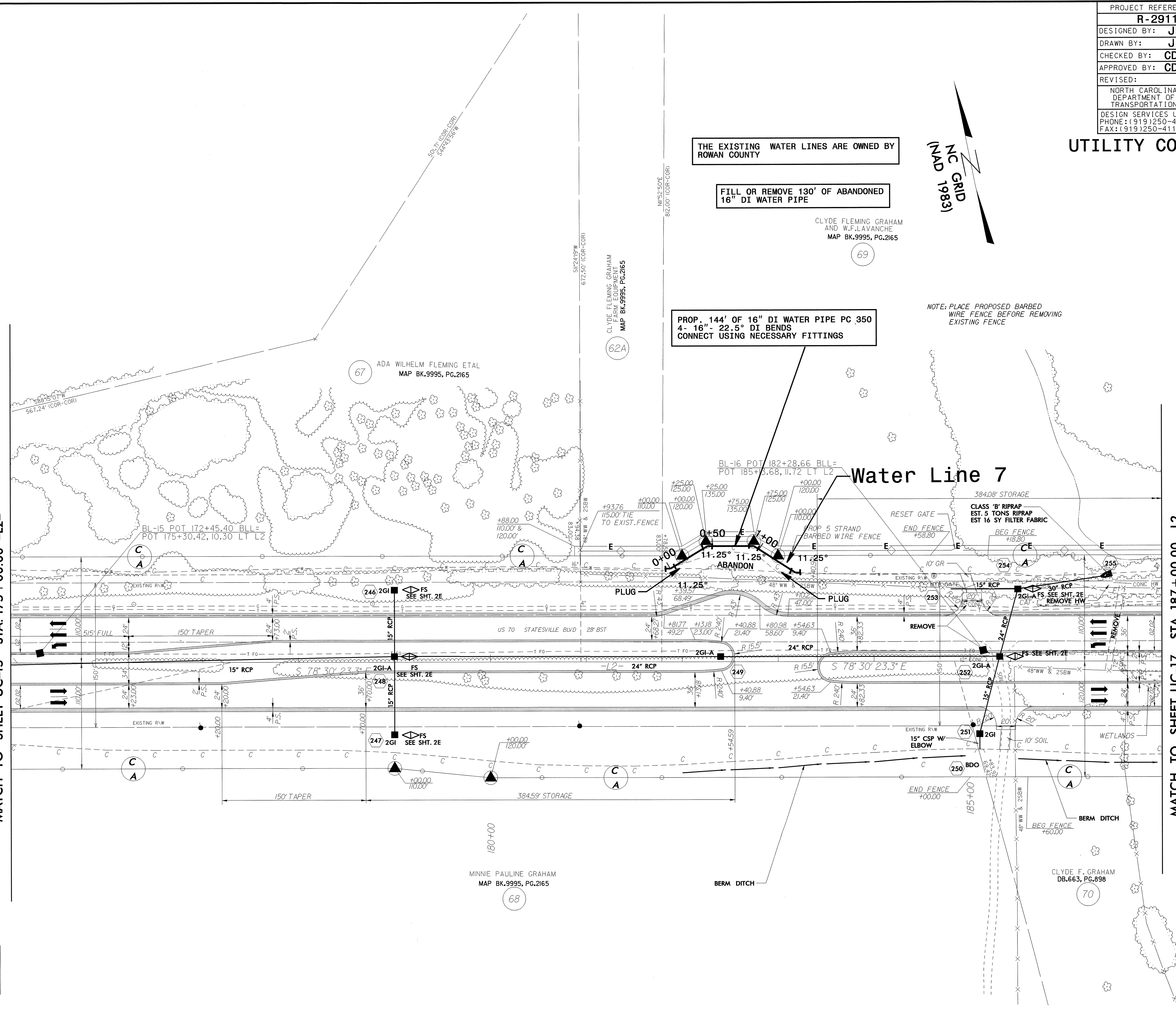
CLYDE FLEMING GRAHAM AND W.F. LAVANCHE
MAP BK.9995, PG.2165

PROP. 144' OF 16" DI WATER PIPE PC 350
4- 16"- 22.5° DI BENDS
CONNECT USING NECESSARY FITTINGS

NOTE: PLACE PROPOSED BARBED WIRE FENCE BEFORE REMOVING EXISTING FENCE

MATCH TO SHEET UC-15 STA. 175+00.00 -L2-

MATCH TO SHEET UC-17 STA. 187+00.00 -L2-



67 ADA WILHELM FLEMING ETAL
MAP BK.9995, PG.2165

62A CLYDE FLEMING GRAHAM
MAP BK.9995, PG.2165

69

68 MINNIE PAULINE GRAHAM
MAP BK.9995, PG.2165

70 CLYDE F. GRAHAM
DB.663, PG.898