

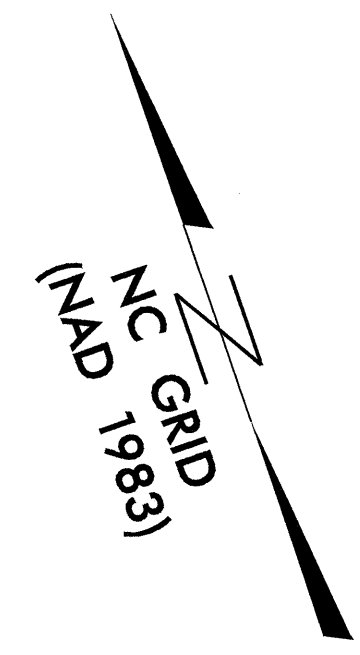
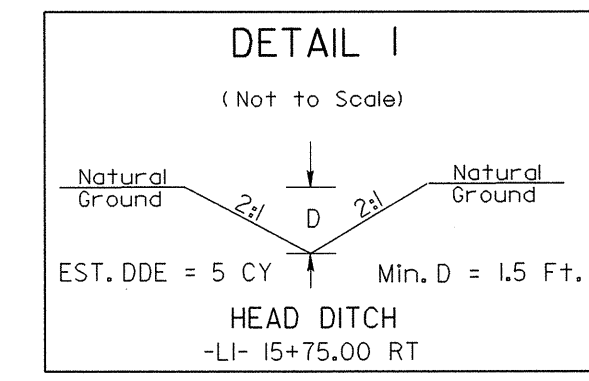
UTILITIES BY OTHERS

NOTE:
ALL PROPOSED UTILITY WORK
SHOWN ON THIS SHEET WILL
BE DONE BY OTHERS

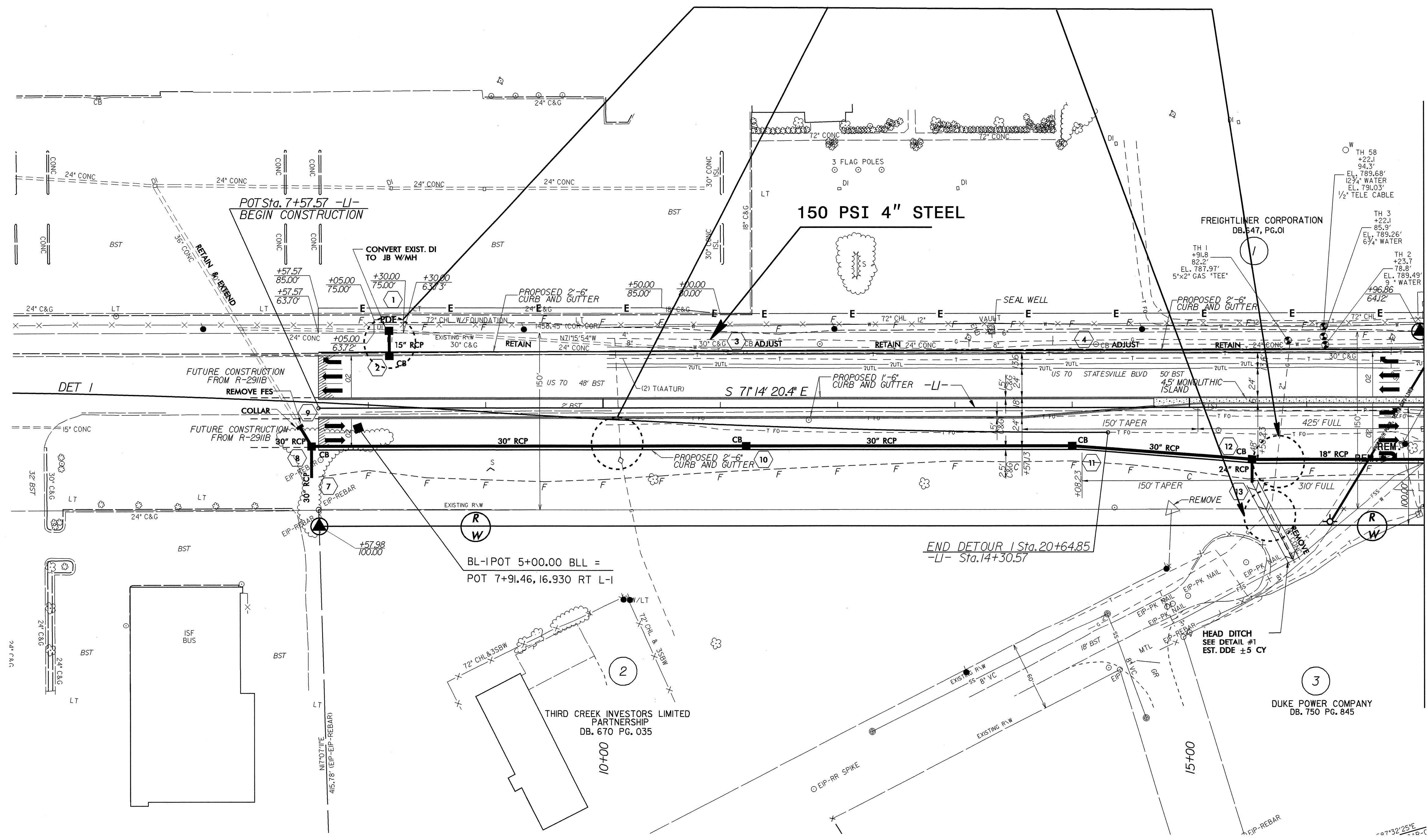
DATUM DESCRIPTION

THE LOCALIZED COORDINATE SYSTEM DEVELOPED FOR THIS PROJECT IS BASED ON THE STATE PLANE COORDINATES ESTABLISHED BY NCDOT FOR MONUMENT "384 JAS"
WITH STATE PLANE GRID COORDINATES OF
NORTHING: 724643.8657(11) EASTING: 1507152.2547(11)
THE AVERAGE COMBINED GRID FACTOR USED ON THIS PROJECT (GROUND TO GRID) IS: 0.999873400
THE NC LAMBERT GRID BEARING AND
LOCALIZED HORIZONTAL GROUND DISTANCE FROM
"384 JAS" TO -L1- STATION 7+57.57 IS N88°46'02.3" W, 9,394.16 FEET.

ALL LINEAR DIMENSIONS ARE LOCALIZED HORIZONTAL DISTANCES
VERTICAL DATUM USED IS NGVD 29



**GAS LINE CONFLICT
WILL REMAIN IN PLACE
AND BE ADJUSTED AS NECESSARY**



MATCH TO SHEET UO-3 STA. 17+00.00 -LI-

8/17/99

24-AUG-2004 15:35 J:\P\9\1\PROJ\NR2911C_U02.DGN