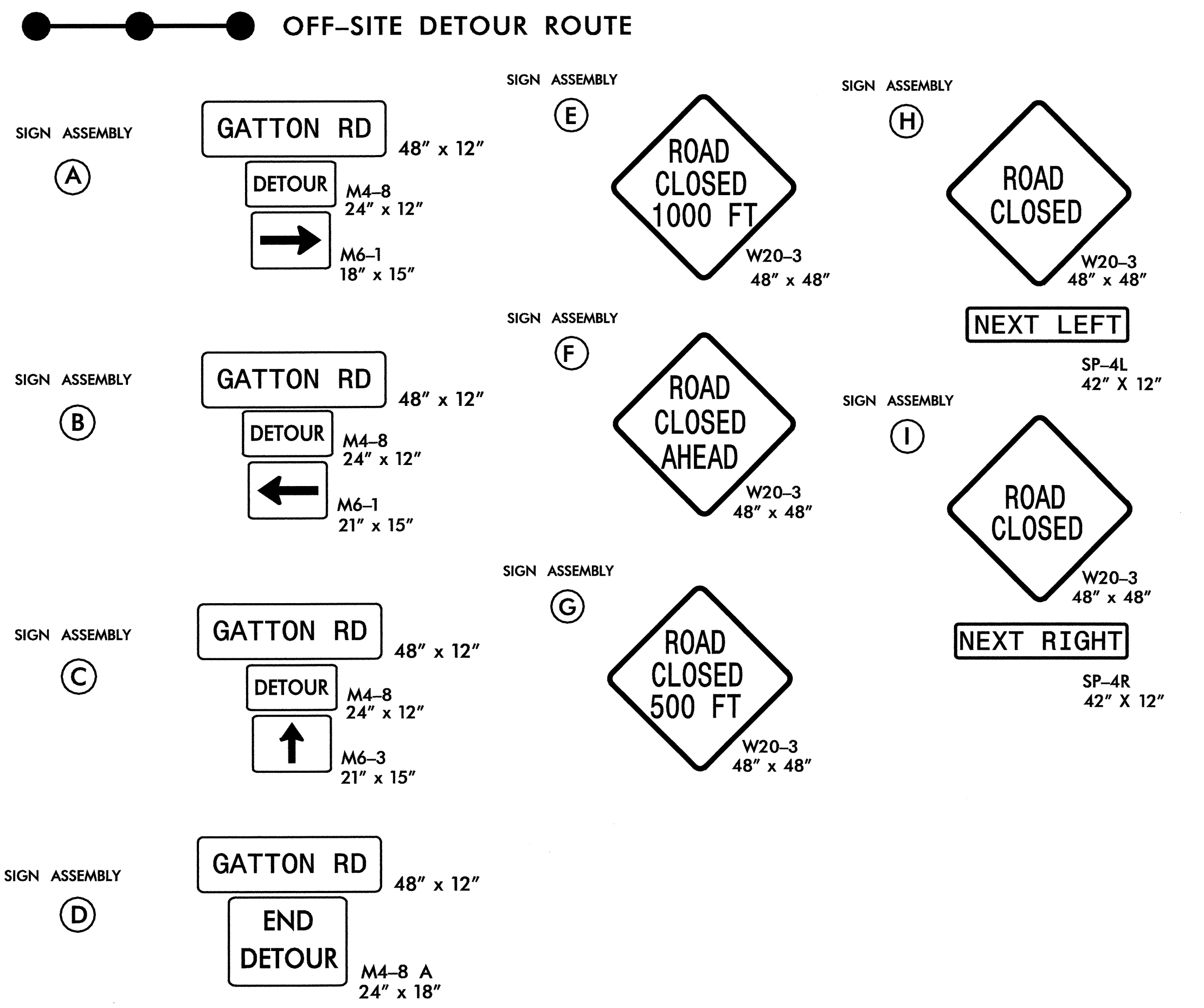
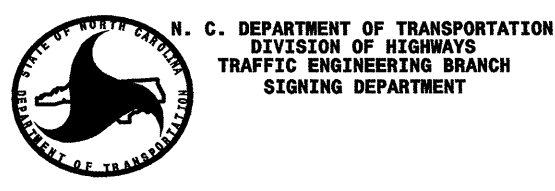


### -Y10- OFF-SITE DETOUR SIGNING



### -Y10- OFFSITE DETOUR SIGN DESIGN



N. C. DEPARTMENT OF TRANSPORTATION  
 DIVISION OF HIGHWAYS  
 TRAFFIC ENGINEERING BRANCH  
 SIGNING DEPARTMENT

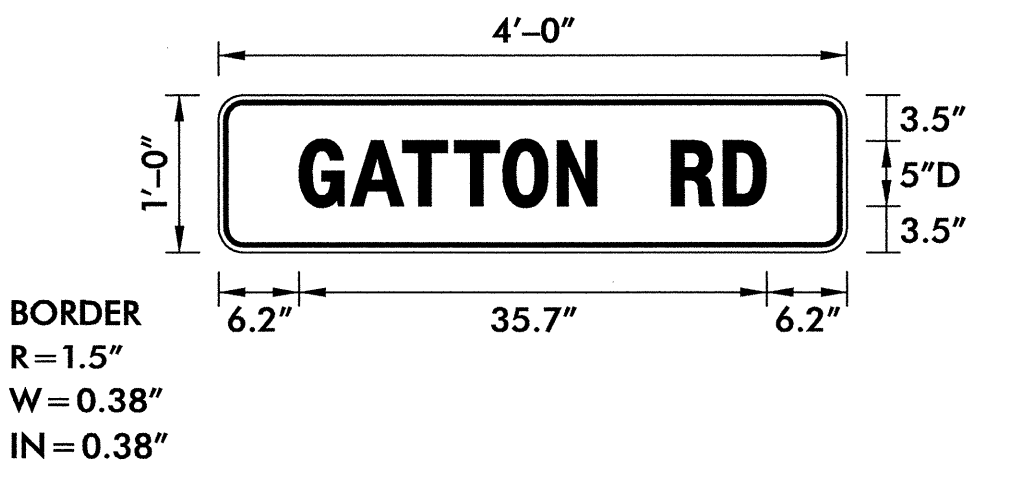
DESIGN BY: BSESSOMS      CHECKED BY:      STD #:      DATE: Mar 16, 2004  
 PROJECT ID: ID      DIV: 9

SIGN NUMBER: SP04070  
TYPE: D  
QUANTITY: 1  
SIGN WIDTH: 4'-0"  
HEIGHT: 1'-0"  
TOTAL AREA: 4.0 Sq.Ft.

BORDER TYPE:  
RECESS: 0.38"  
WIDTH: 0.38"  
RADIUS: 1.5"

NO. Z BARS:      MAT'L: 0.080" (2.0 mm) ALUMINUM  
LENGTH:

SYMBOL	X	Y	WID	HT



- USE NOTES: 2, 5
- Legend and border shall be direct applied Type III reflective sheeting.
  - Legend and border shall be direct applied non-reflective sheeting.
  - Shields shall be Type III reflective sheeting on 0.032" (0.8mm) aluminum and demountable.
  - Background shall be Type III reflective sheeting.
  - Background shall be Type I reflective sheeting.
  - Center arrow(s) vertically on sign.
  - Bottom panel shall be yellow Type VII sheeting. Legend shall be direct applied black non-reflective sheeting. Yellow panel is:

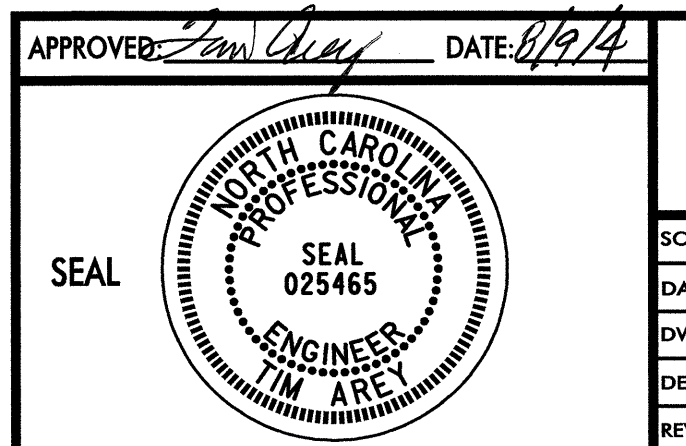
LETTER POSITIONS

Letter spacings are to start of next letter													Series/Size
													Text Length
6.2	4	4.4	3.3	3.7	4.4	3.4	5	4.2	3.4	6.2			D5
													35.7

Spacing Factor is 1 unless specified otherwise

PLAN PREPARED IN THE OFFICE OF:

*Kubilins*  
TRANSPORTATION GROUP, INC.  
800 W. HILL STREET, SUITE 202  
CHARLOTTE, NC 28208  
PH: (980) 321-0202 FAX: (980) 321-0108



### OFFSITE DETOUR ROUTE

SCALE: NONE	REVISIONS
DATE: 6/04	
DWG. BY: LDA	
DESIGN BY: TMA	
REVIEWED BY: TMA	