

8/17/99

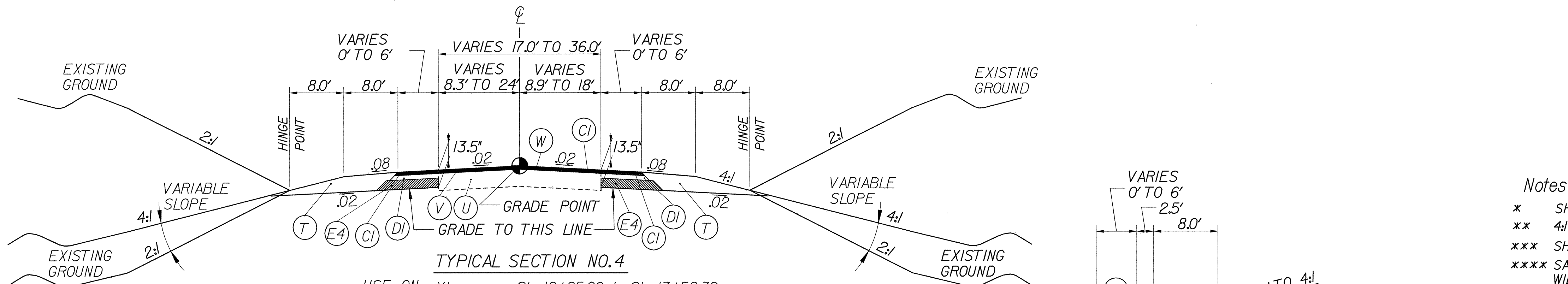
PROJECT REFERENCE NO. R-2911C	SHEET NO. 2A
RW SHEET NO.	
ROADWAY DESIGN ENGINEER <i>[Signature]</i> DAVID L. WILBUR	PAVEMENT DESIGN ENGINEER <i>[Signature]</i> SUNG-CHI CHEN
WILBUR SMITH ASSOCIATES P.O. BOX 2478 Raleigh, NC 27601	SUNGATE DESIGN GROUP 915-A JONES FRANKLIN RD. RALEIGH, NC 27604

Notes :

- * SHOULDER WIDTH TO BE INCREASED 3' WHERE GUARDRAIL IS USED.
- ** 4:1 MAXIMUM TO PROVIDE POSITIVE DRAINAGE.
- *** SHOULDER WIDTH TO BE INCREASED 4' WHERE GUARDRAIL IS USED.
- **** SAWCUT EXISTING EDGE OF PAVEMENT FOR WIDENING WIDTH TO BE DETERMINED BY ENGINEER.

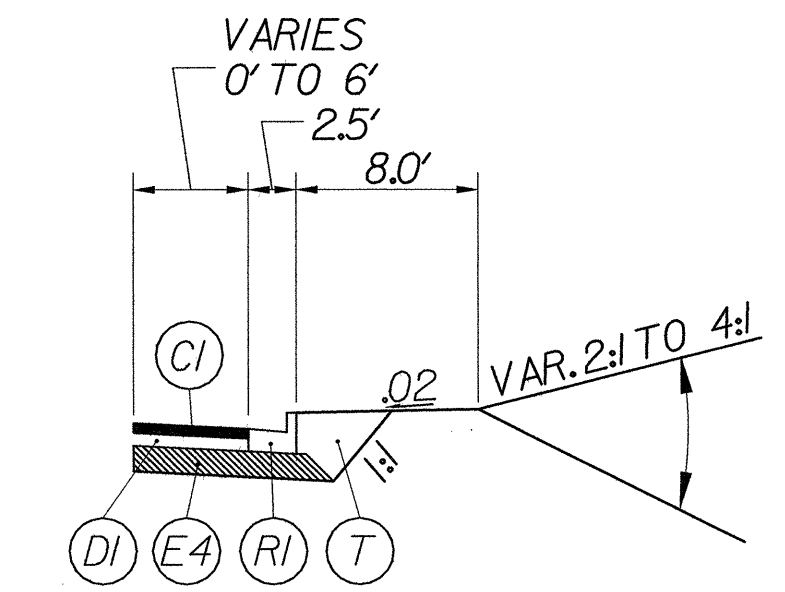
PAVEMENT EDGE SLOPES ARE 1:1 UNLESS SHOWN OTHERWISE.

PAVEMENT SCHEDULE	
C1	3.0" S9.5C
C2	VAR. DEPTH S9.5C
C3	3.0" S9.5B
DI	4.0" 119.0C
D2	VAR. DEPTH 119.0C
D3	3.0" 119.0C
E1	5.0" B25.0B
E2	5.5" B25.0C
E3	4.0" B25.0B
E4	6.5" B25.0C
J1	8" ABC
J2	VAR. DEPTH. ABC
K	BASE STABILIZATION
R1	2'6" CURB AND GUTTER
R2	1'6" CURB AND GUTTER
R3	MONOLITHIC CONCRETE ISLAND (SEE DETAIL A)
R4	SHOULDER BERM AND GUTTER
T	EARTH MATERIAL
U	EXISTING PAVEMENT
V	MILLING - INCIDENTAL
VI	MILLING - 4" DEPTH
W	WEDGING

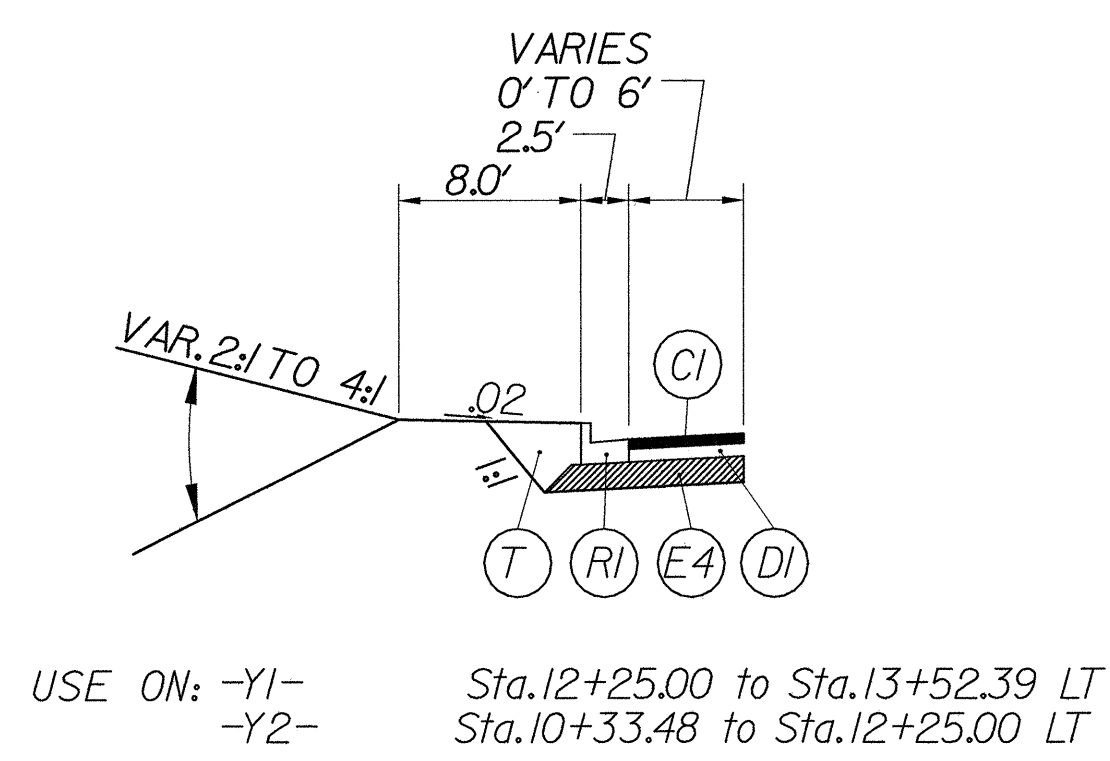


TYPICAL SECTION NO. 4

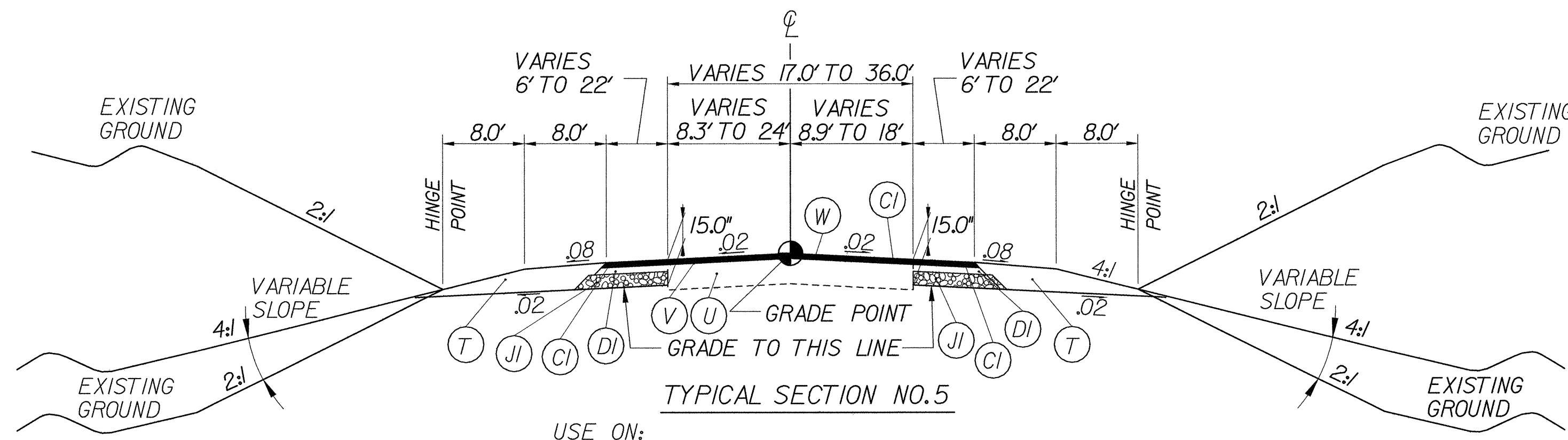
USE ON: -Y1- Sta.12+25.00 to Sta.13+52.39
 -Y2- Sta.10+33.48 to Sta.12+25.00
 -Y3- Sta.10+50.00 to Sta.11+58.99
 -Y4- Sta.10+25.00 to Sta.12+25.93
 -Y6- Sta.10+34.94 to Sta.10+88.86
 -Y7- Sta.10+30.00 to Sta.10+99.25
 -Y8- Sta.12+60.00 to Sta.13+51.46



USE ON: -Y1- Sta.12+25.00 to Sta.13+52.39 RT
 -Y2- Sta.10+33.48 to Sta.12+25.00 RT

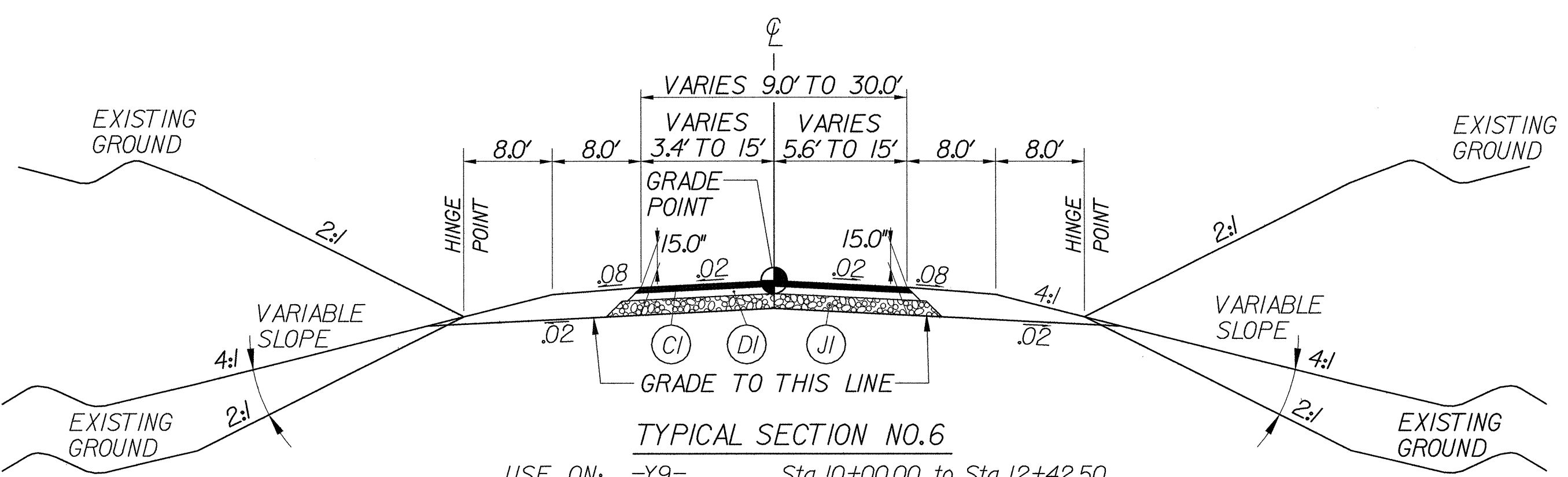


USE ON: -Y1- Sta.12+25.00 to Sta.13+52.39 LT
 -Y2- Sta.10+33.48 to Sta.12+25.00 LT



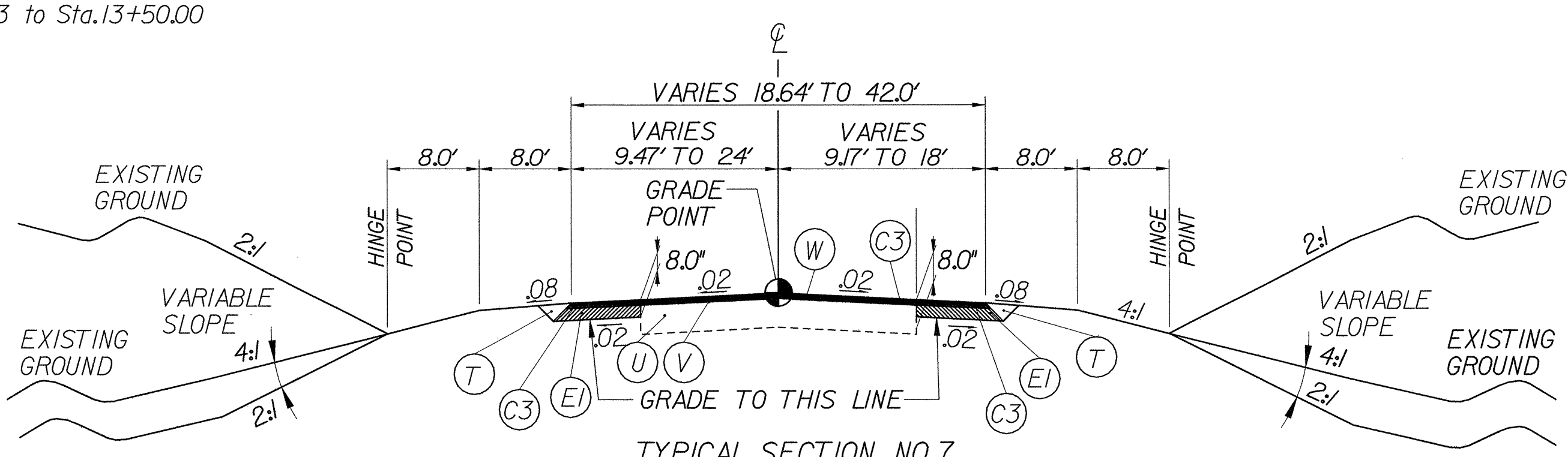
TYPICAL SECTION NO. 5

USE ON: -Y3- Sta.11+58.99 to Sta.12+58.99
 -Y6- Sta.10+88.86 to Sta.11+80.00
 -Y7- Sta.10+99.25 to Sta.11+84.68
 -Y8- Sta.13+51.46 to Sta.14+32.83



TYPICAL SECTION NO. 6

USE ON: -Y9- Sta.10+00.00 to Sta.12+42.50
 -Y10- Sta.10+47.00 to Sta.13+52.00
 -Y12- Sta.10+35.63 to Sta.13+50.00



TYPICAL SECTION NO. 7

USE ON: -Y5- Sta.10+00.00 to Sta.13+52.39
 -Y11- Sta.10+00.00 to Sta.13+40.44
 -Y11A- Sta.10+48.35 to Sta.14+00.00

REVISIONS

DATE: 9/2/04
 TIME: 8:27:44 AM
 C:\rdoin\2911c\roadway\proj\2911c_rdy_typ_02a.dgn