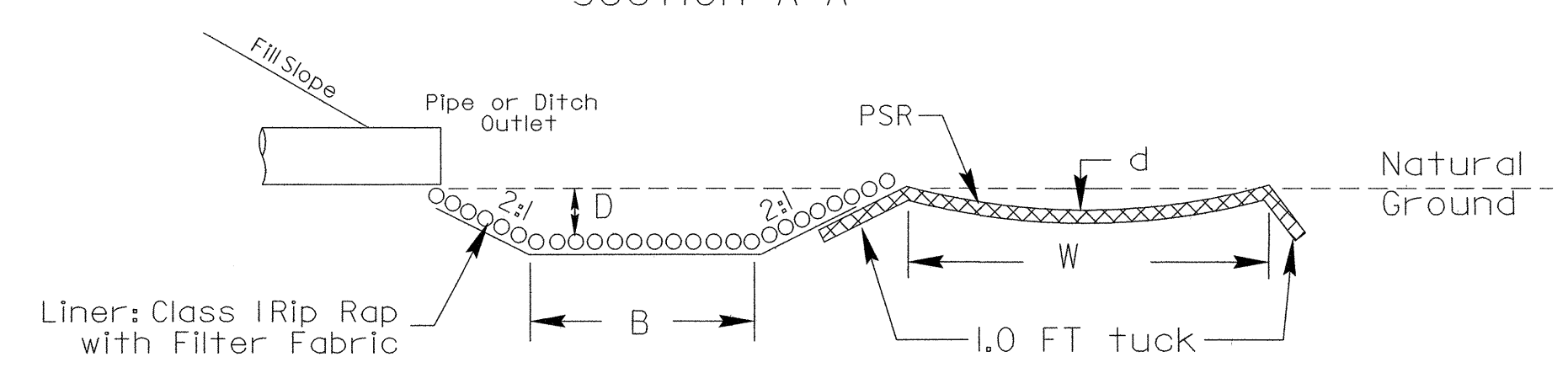
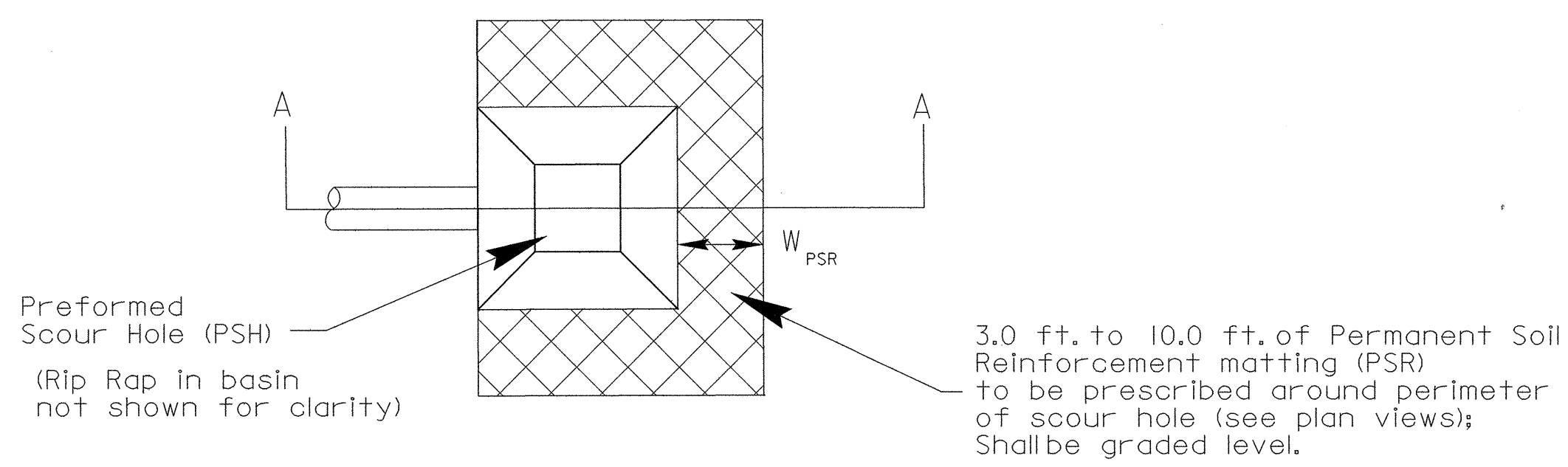


8.17/99

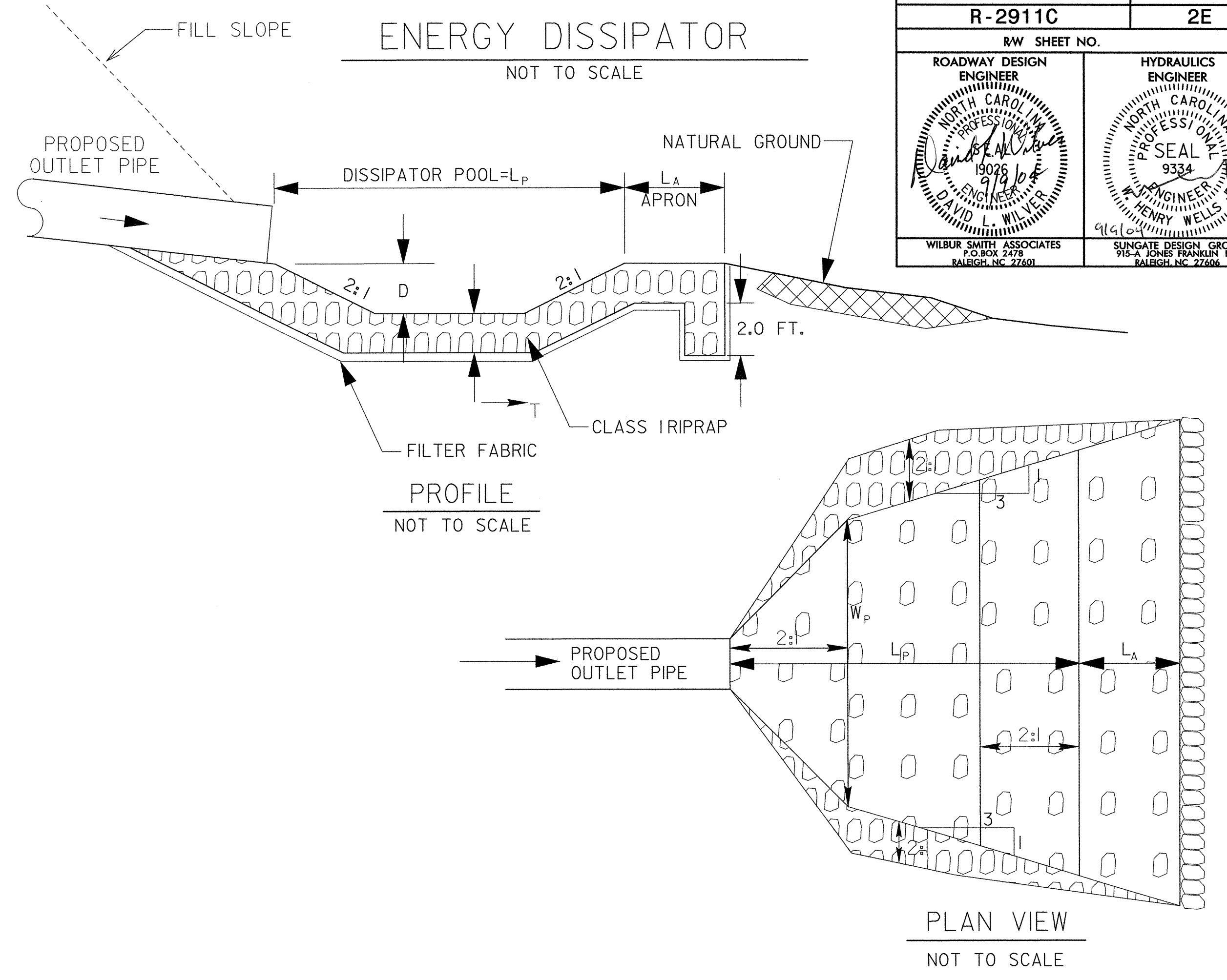
PROJECT REFERENCE NO. R-2911C	SHEET NO. 2E
RW SHEET NO.	
ROADWAY DESIGN ENGINEER 	HYDRAULICS ENGINEER
WILBUR SMITH ASSOCIATES P.O. BOX 2478 RALEIGH, NC 27601	SUNGATE DESIGN GROUP 915-A JONES FRANKLIN RD. RALEIGH, NC 27606

PREFORMED SCOUR HOLE

(Not to scale)

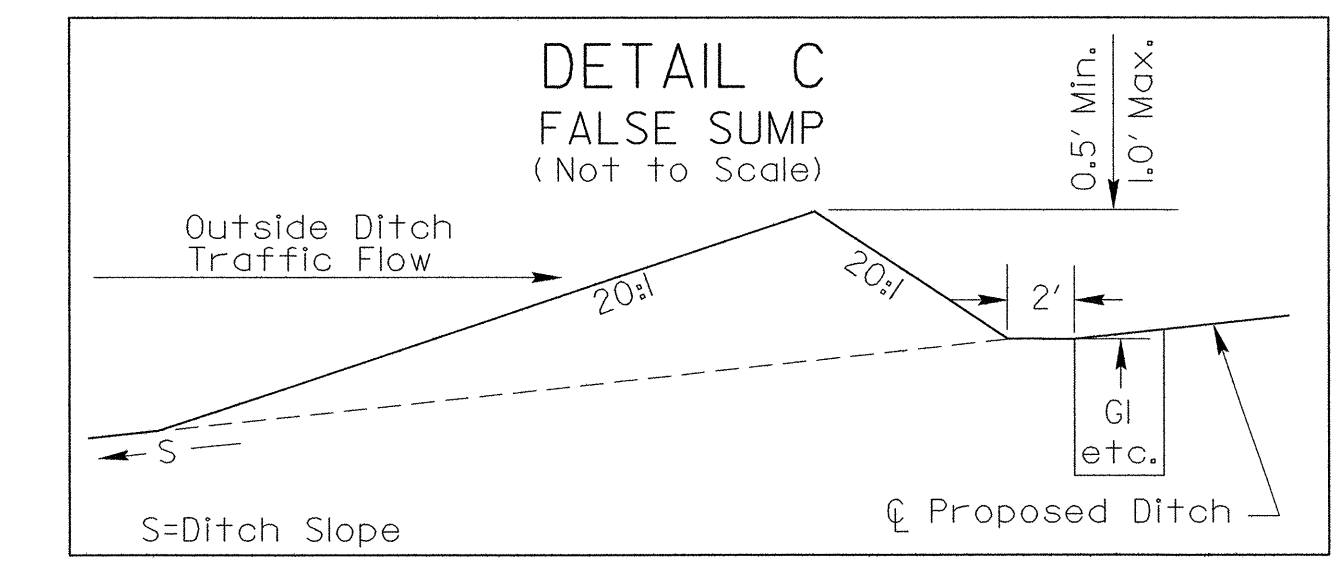
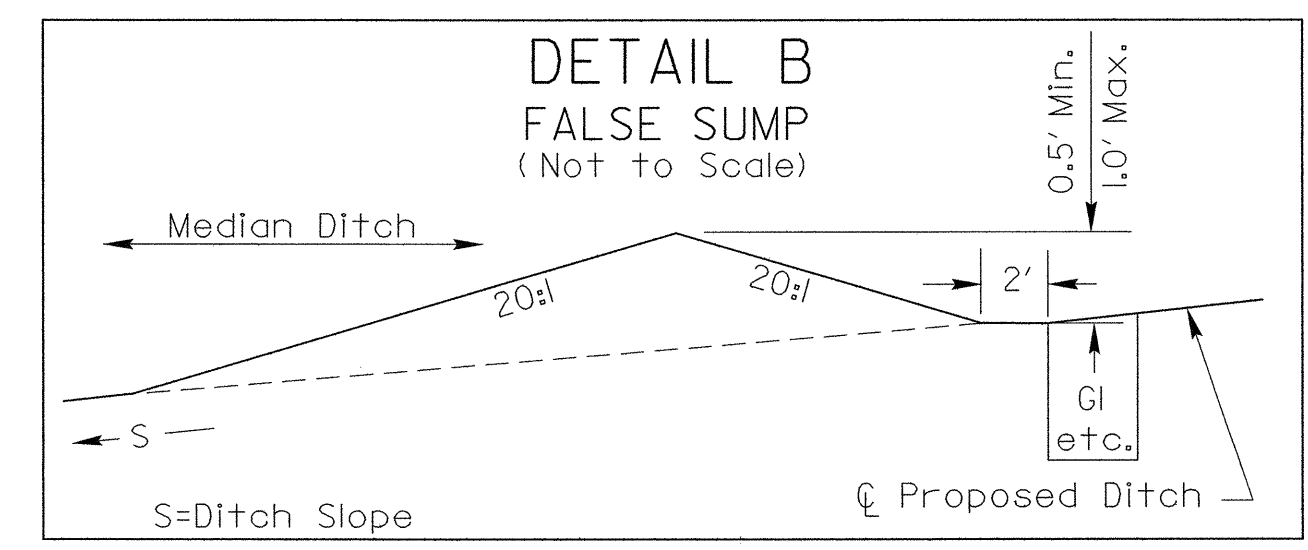
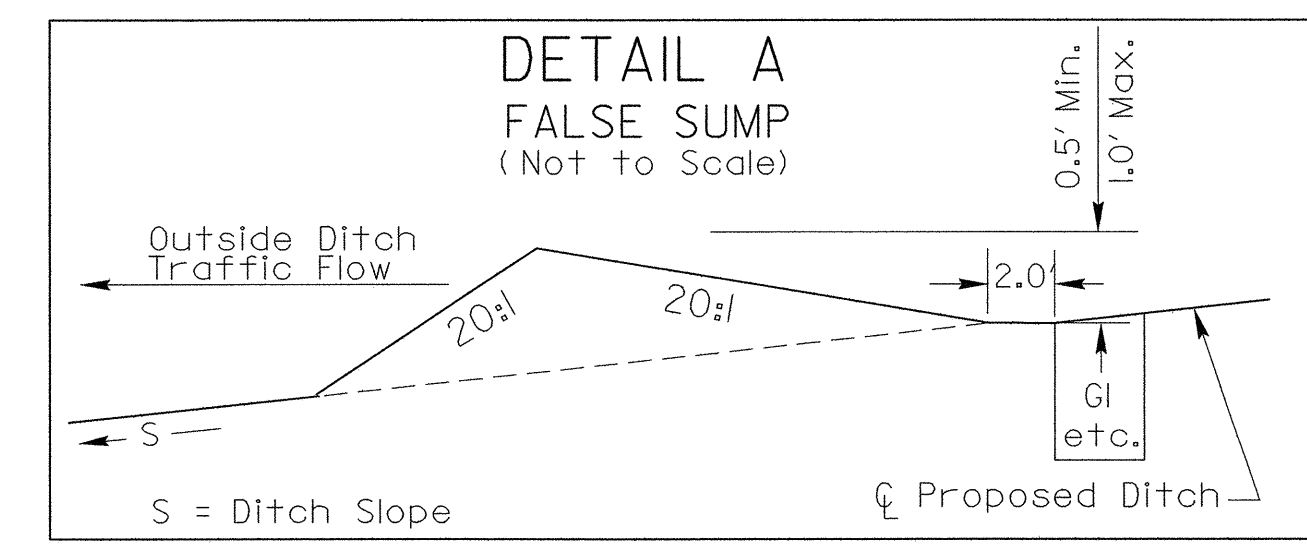


STATION	B FT.	D FT.	W _{PSR} FT.	d FT.	CLASS I RIP RAP TONS	DDE (CU YD)	FILTER FABRIC (SQ YD)
98+15 -L- RT	4	1.5	5	0.5	8	3.2	31



STATION	L _p FT.	W _p FT.	L _A FT.	T FT.	D FT.	CLASS I RIP RAP TONS	DDE (CU YD)	FILTER FABRIC (SQ YD)
63+25 -L- RT	26	16	8	2.0	3.0	96	107	97
69+27 -L- RT	23	14	5	2.0	3.0	66	75	67
81+25 -L- RT	25	16	7.5	2.0	3.0	90	101	91

REVISIONS



- USE ON:
- L1- 59+15 LT. -L2- 179+15 LT.
 - L1- 66+85 LT. -L2- 185+65 LT.
 - L2- 79+65 LT. -L2- 195+20 LT.
 - L2- 88+05 LT. -L2- 206+30 LT.
 - L2- 101+85 LT. -Y13- 24+05 LT.
 - L2- 107+85 LT.
 - L2- 123+65 LT.
 - L2- 139+65 LT.
 - L2- 152+60 LT.

- USE ON:
- L1- 59+15 MED. -L2- 94+85 MED.
 - L1- 60+35 MED. -L2- 98+00 MED.
 - L1- 63+40 MED. -L2- 101+85 MED.
 - L1- 66+85 MED. -L2- 105+50 MED.
 - L1- 69+15 MED. -L2- 107+85 MED.
 - L2- 71+85 MED. -L2- 117+00 MED.
 - L2- 77+60 MED. -L2- 123+65 MED.
 - L2- 81+70 MED. -L2- 126+15 MED.
 - L2- 83+35 MED. -L2- 130+35 MED.
 - L2- 88+60 MED. -L2- 135+15 MED.
 - L2- 139+65 MED. -L2- 189+40 MED.
 - L2- 144+65 MED. -L2- 192+80 MED.
 - L2- 146+60 MED. -L2- 195+20 MED.
 - L2- 150+10 MED. -L2- 202+05 MED.
 - L2- 154+85 MED. -L2- 204+85 MED.
 - L2- 159+80 MED. -L2- 206+20 MED.
 - L2- 163+10 MED. -L2- 210+40 MED.
 - L2- 164+25 MED. -L2- 213+10 MED.
 - L2- 173+40 MED. -L2- 214+80 MED.
 - L2- 179+15 MED. -L2- 218+00 MED.
 - L2- 185+45 MED. -L2- 222+60 MED.

- USE ON:
- L1- 22+80 RT. -L2- 149+30 RT.
 - L1- 66+85 RT. -L2- 179+15 RT.
 - L2- 71+85 RT. -L2- 189+40 RT.
 - L2- 83+35 RT.
 - L2- 88+85 RT.
 - L2- 101+85 RT.
 - L2- 107+85 RT.
 - L2- 139+65 RT.
 - L2- 144+40 RT.
 - L2- 146+60 RT.

DATE: 9/2/04
TIME: 9:43:42 AM
R:\ncdot\2911C\Roadway\Proj\2911c.rdy TYP 02E.DGN