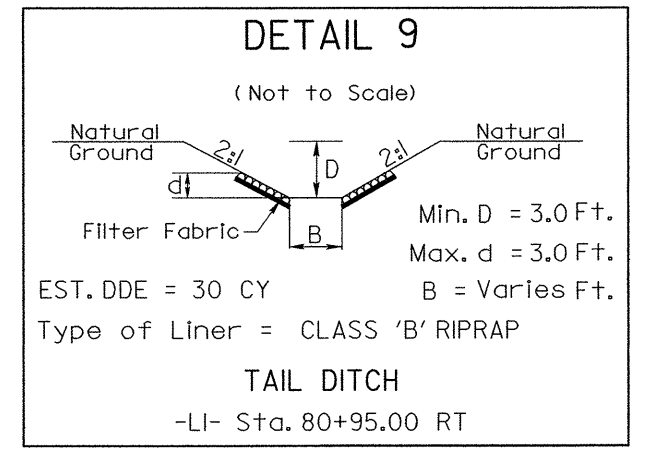


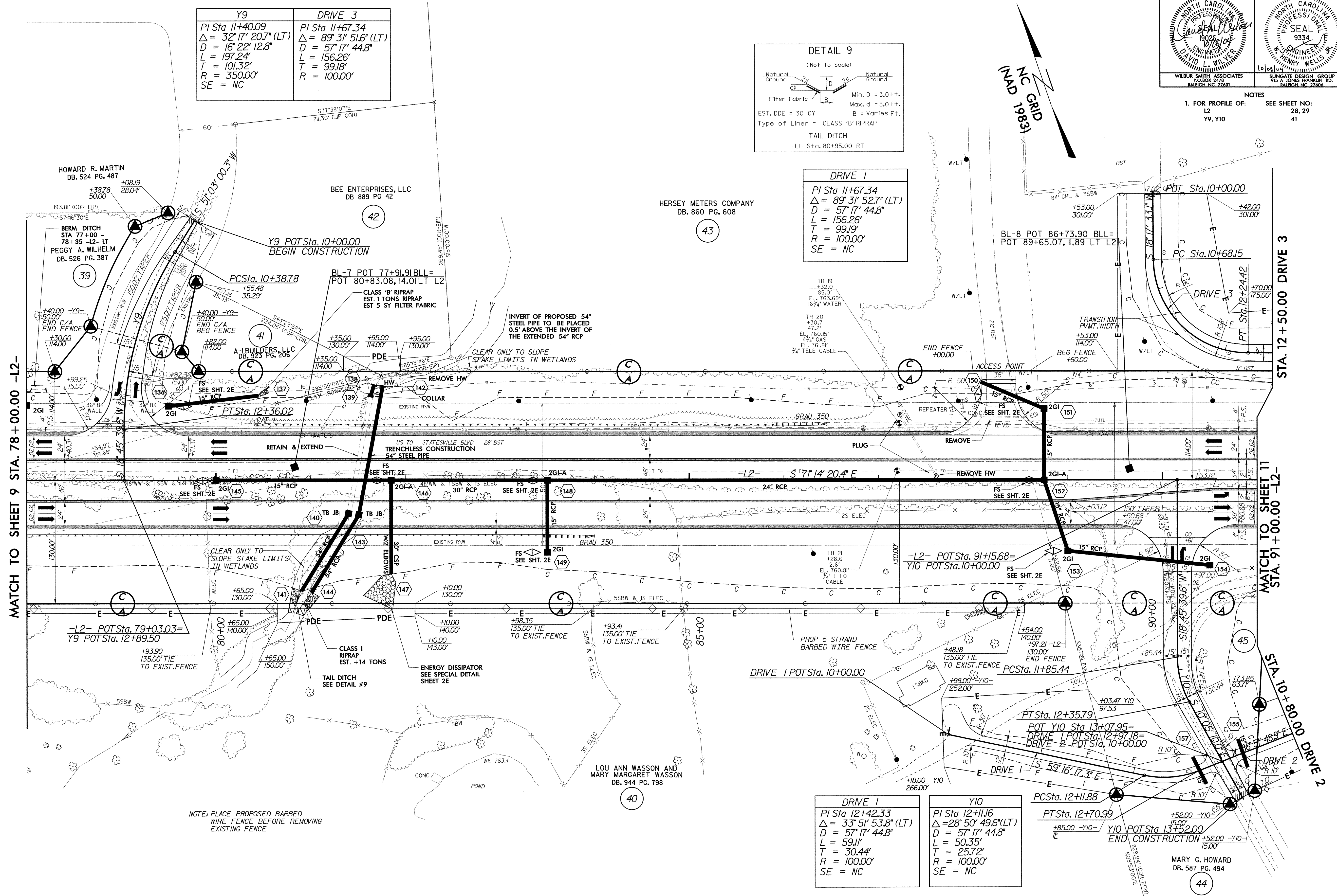
PROJECT REFERENCE NO. R-2911C		SHEET NO. 10	
RW SHEET NO.			
ROADWAY DESIGN ENGINEER <i>David L. Wilbur</i>		HYDRAULICS ENGINEER <i>Seal</i>	
NORTH CAROLINA PROFESSIONAL ENGINEER DAVID L. WILBUR 19076 10/25/08		NORTH CAROLINA PROFESSIONAL ENGINEER SEAL 9334 10/25/08	
WILBUR SHAW ASSOCIATES P.O. BOX 2478 RALEIGH, NC 27601		SINGATE DESIGN GROUP 915-A JONES FRANKLIN RD. RALEIGH, NC 27606	

NOTES
1. FOR PROFILE OF: SEE SHEET NO: 28, 29
L2 19, Y10 41

Y9	DRIVE 3
PI Sta 11+40.09	PI Sta 11+67.34
$\Delta = 32^{\circ} 17' 20.7" (LT)$	$\Delta = 89^{\circ} 31' 51.6" (LT)$
$D = 16^{\circ} 22' 12.8"$	$D = 57^{\circ} 17' 44.8"$
$L = 197.24'$	$L = 156.26'$
$T = 101.32'$	$T = 99.18'$
$R = 350.00'$	$R = 100.00'$
SE = NC	



DRIVE 1
PI Sta 11+67.34
$\Delta = 89^{\circ} 31' 52.7" (LT)$
$D = 57^{\circ} 17' 44.8"$
$L = 156.26'$
$T = 99.18'$
$R = 100.00'$
SE = NC



DRIVE 1
PI Sta 12+42.33
$\Delta = 33^{\circ} 51' 53.8" (LT)$
$D = 57^{\circ} 17' 44.8"$
$L = 59.11'$
$T = 30.44'$
$R = 100.00'$
SE = NC

Y10
PI Sta 12+11.16
$\Delta = 28^{\circ} 50' 49.6" (LT)$
$D = 57^{\circ} 17' 44.8"$
$L = 50.35'$
$T = 25.72'$
$R = 100.00'$
SE = NC

PT Sta. 12+70.99
+85.00 -Y10- 15.00
Y10 POT Sta. 13+52.00
END CONSTRUCTION

MARY G. HOWARD
DB. 587 PG. 494

REVISIONS

MATCH TO SHEET 9 STA. 78+00.00 -L2-

MATCH TO SHEET 11 STA. 91+00.00 -L2-

STA. 12 + 50.00 DRIVE 3

STA. 10 + 80.00 DRIVE 2

NOTE: PLACE PROPOSED BARBED WIRE FENCE BEFORE REMOVING EXISTING FENCE