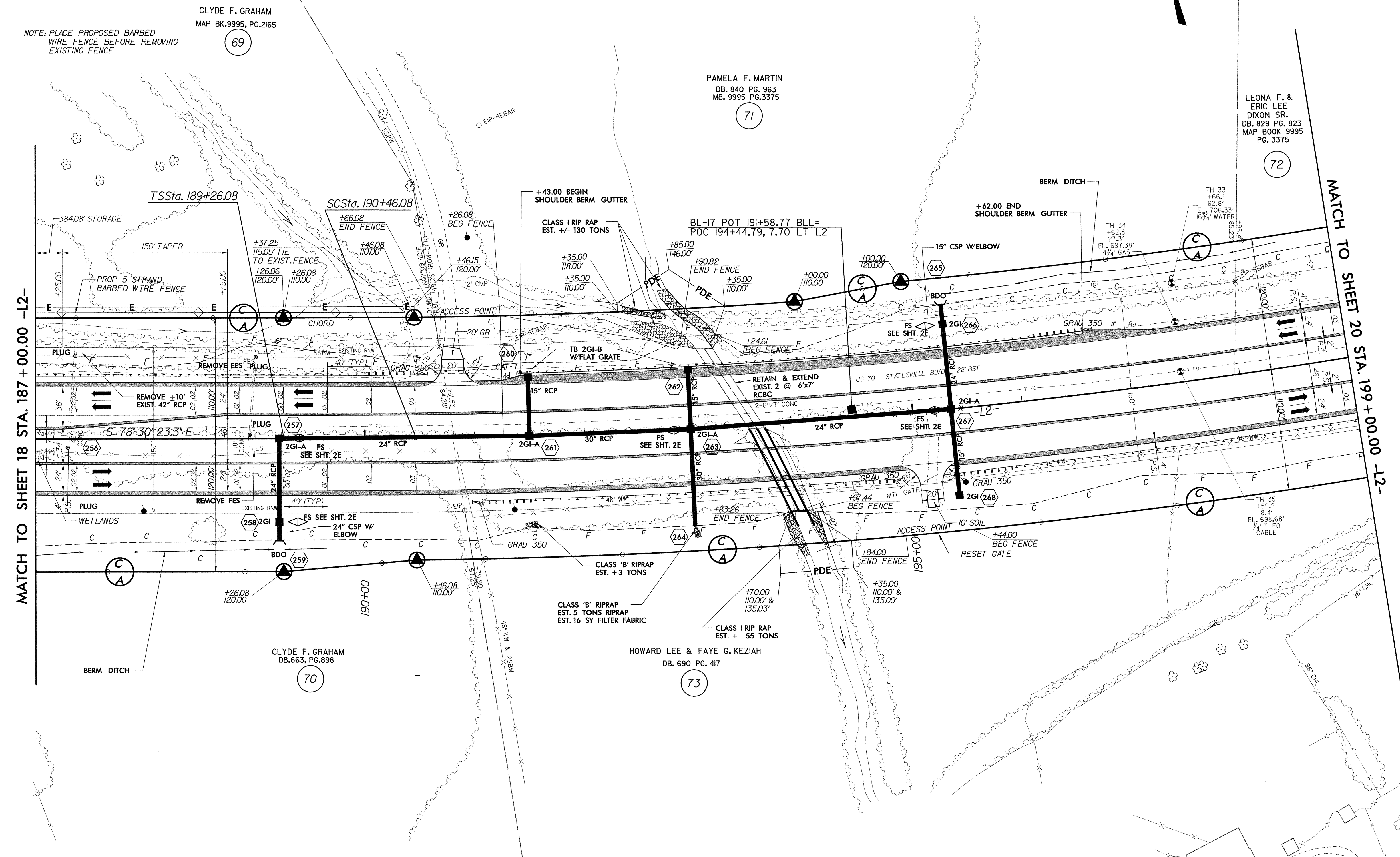
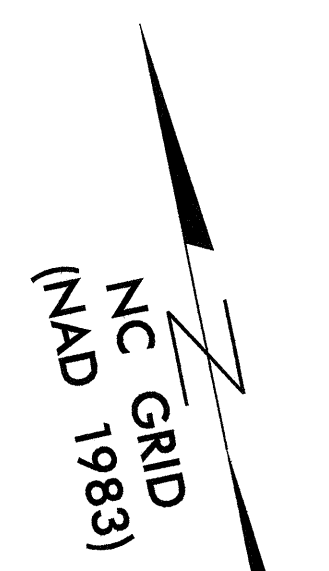


NOTES  
 1. FOR PROFILE OF: L2 SEE SHEET NO: 36, 37  
 2. FOR CULVERT PLANS SEE SHEET C-1 THRU C-20

-L2-

Pls Sta 190+06.08 $\Theta_s = 0^\circ 36' 00.0''$ $L_s = 120.00'$ $LT = 80.00'$ $ST = 40.00'$	Pls Sta 203+69.75 $\Delta = 26^\circ 01' 01.2'' (LT)$ $D = 1^\circ 00' 00.0''$ $L = 2,601.70'$ $T = 1,323.67'$ $R = 5,729.58'$ $SE = .03$ $DS = 60 \text{ MPH}$	Pls Sta 216+87.78 $\Theta_s = 0^\circ 36' 00.0''$ $L_s = 120.00'$ $LT = 80.00'$ $ST = 40.00'$
---	--	---



REVISIONS

8/17/99

DATE: 9/2/04 PM  
 P:\ncad\12911c\roadway\proj\2911c\_rdy\_psh\_19.dgn