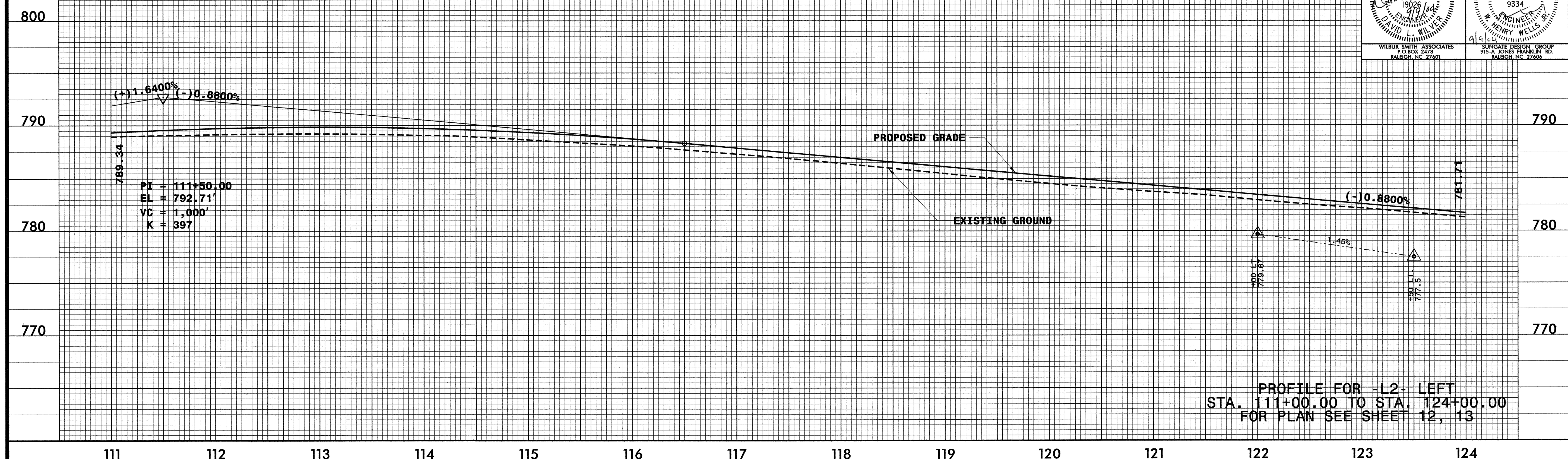


5/28/99

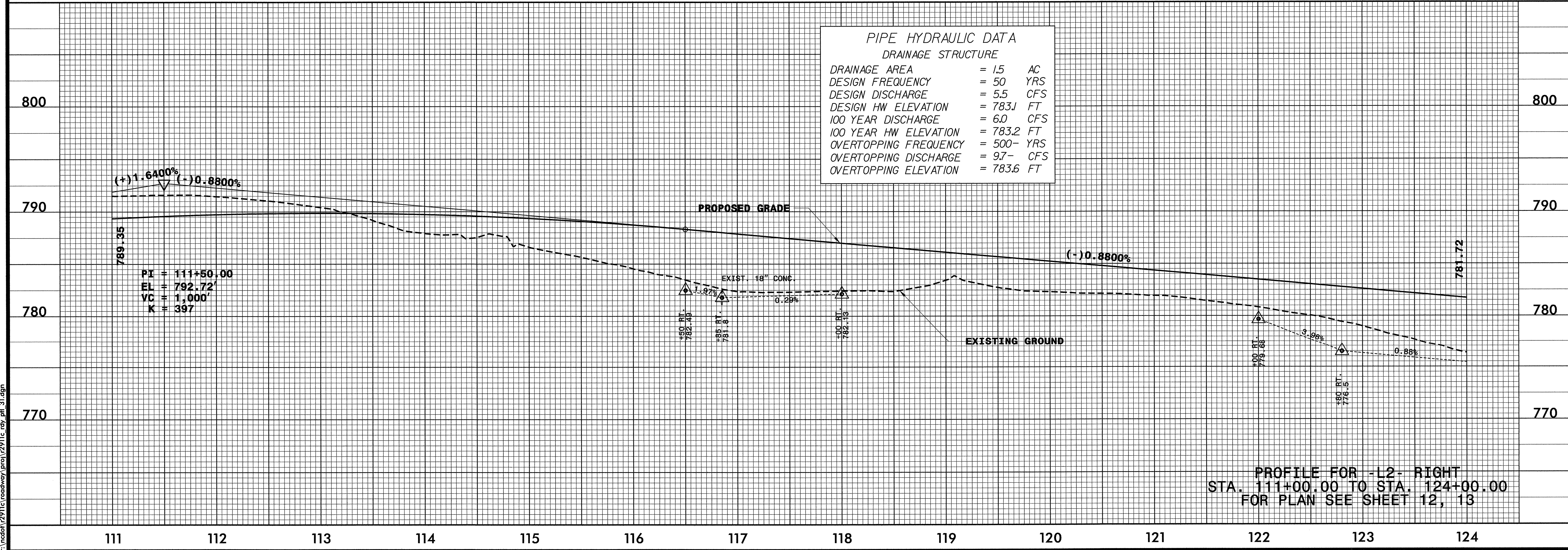
BM 3:
RR SPIKE IN ROOT OF TRIPLE FORKED TREE
-L2- STA. 117+82.49, 442.64' LT. =
BL STA. 114+99.14, 439.47' LT. =
EL. 774.08

PROJECT REFERENCE NO. R-2911C	SHEET NO. 31
ROADWAY DESIGN ENGINEER NORTH CAROLINA PROFESSIONAL SEAL DAVID L. WILHELM 19026	HYDRAULICS ENGINEER NORTH CAROLINA PROFESSIONAL SEAL HENRY WELLS 9334
WILBUR SMITH ASSOCIATES P.O. BOX 2479 RALEIGH, NC 27601	SUNGATE DESIGN GROUP 915-A JONES FRANKLIN RD. RALEIGH, NC 27606



PIPE HYDRAULIC DATA
DRAINAGE STRUCTURE

DRAINAGE AREA	= 1.5 AC
DESIGN FREQUENCY	= 50 YRS
DESIGN DISCHARGE	= 5.5 CFS
DESIGN HW ELEVATION	= 783J FT
100 YEAR DISCHARGE	= 6.0 CFS
100 YEAR HW ELEVATION	= 783.2 FT
OVERTOPPING FREQUENCY	= 500-YRS
OVERTOPPING DISCHARGE	= 9.7- CFS
OVERTOPPING ELEVATION	= 783.6 FT



DATE: 9/2/00 4:04 PM
P:\ncad\2911c\roadway\proj\2911c_rdy.plt 31.dgn