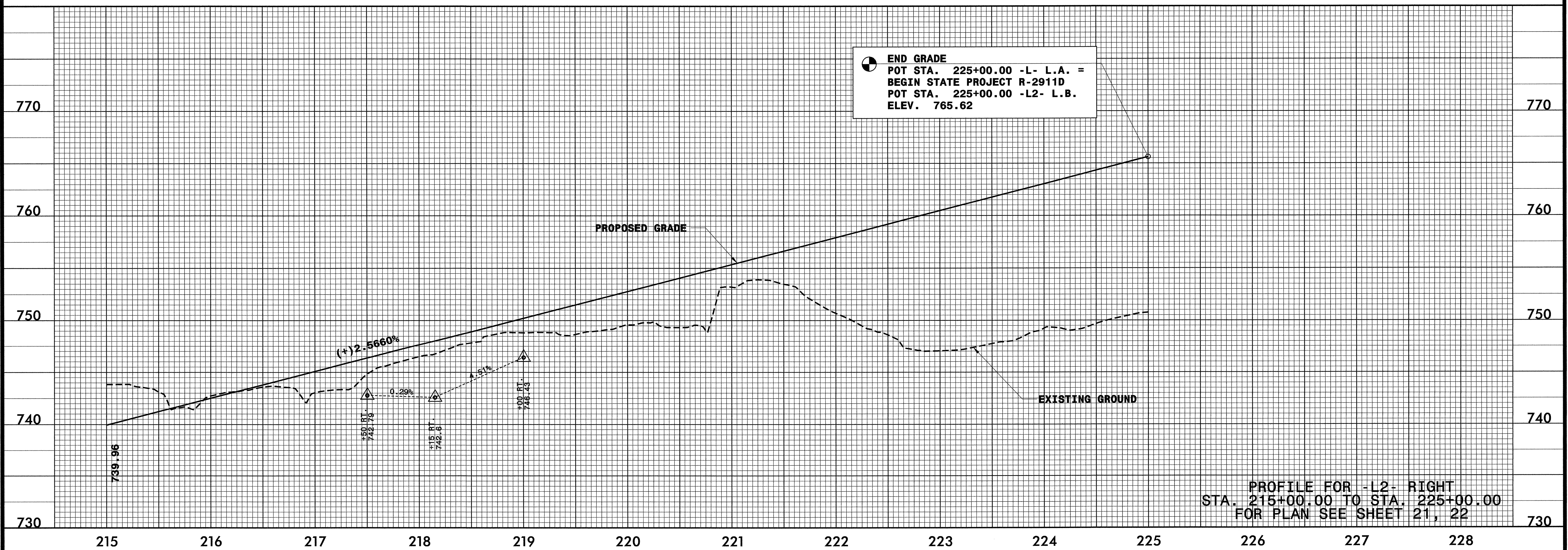
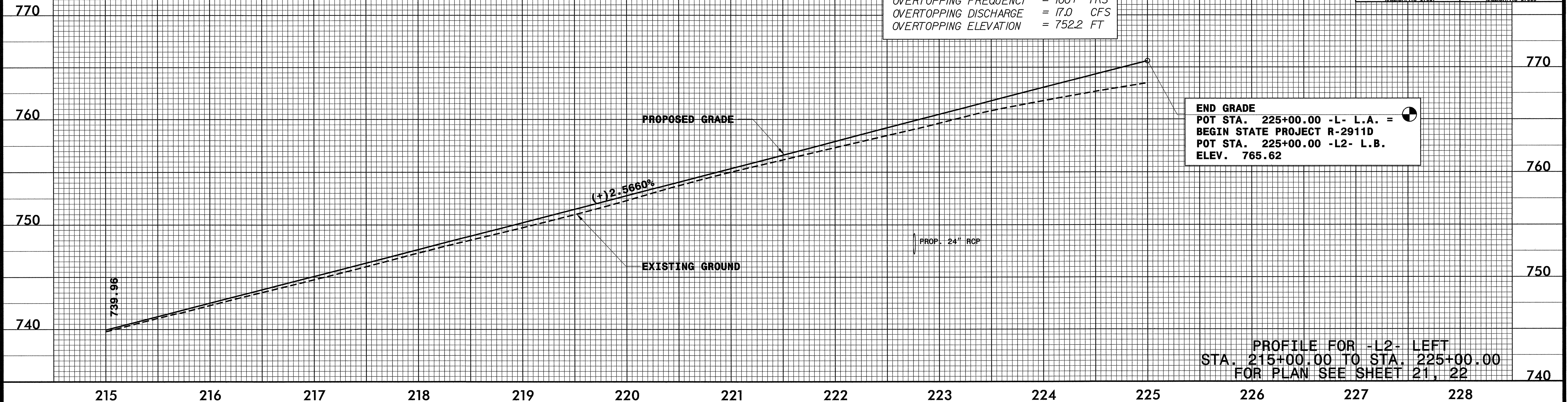


5/28/99

| | |
|--|--|
| PROJECT REFERENCE NO. R-2911C | SHEET NO. 39 |
| ROADWAY DESIGN ENGINEER NORTH CAROLINA PROFESSIONAL SEAL DAVID L. WILBUR WILBUR SMITH ASSOCIATES P.O. BOX 2478 RALEIGH, NC 27601 | HYDRAULICS ENGINEER NORTH CAROLINA PROFESSIONAL SEAL HENRY WELLS SUNGATE DESIGN GROUP 915-A JONES FRANKLIN RD. RALEIGH, NC 27606 |

PIPE HYDRAULIC DATA
DRAINAGE STRUCTURE

| | |
|-----------------------|-------------|
| DRAINAGE AREA | = 3.2 AC |
| DESIGN FREQUENCY | = 50 YRS |
| DESIGN DISCHARGE | = 14.0 CFS |
| DESIGN HW ELEVATION | = 751.22 FT |
| 100 YEAR DISCHARGE | = 15.2 CFS |
| 100 YEAR HW ELEVATION | = 751.62 FT |
| OVERTOPPING FREQUENCY | = 100+ YRS |
| OVERTOPPING DISCHARGE | = 17.0 CFS |
| OVERTOPPING ELEVATION | = 752.2 FT |



DATE: 9/7/2004
TIME: 2:42:39 PM
C:\msdoin\2911c\roadway\proj\2911c.dwg, pfl, 39.dgn