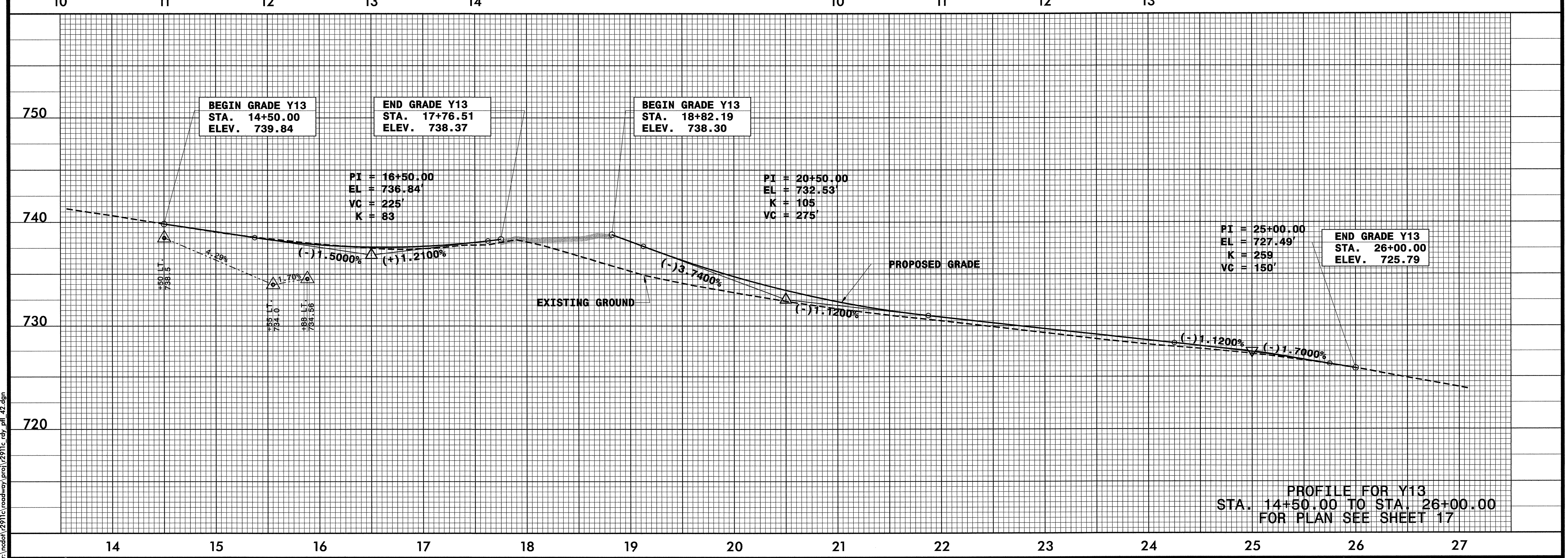
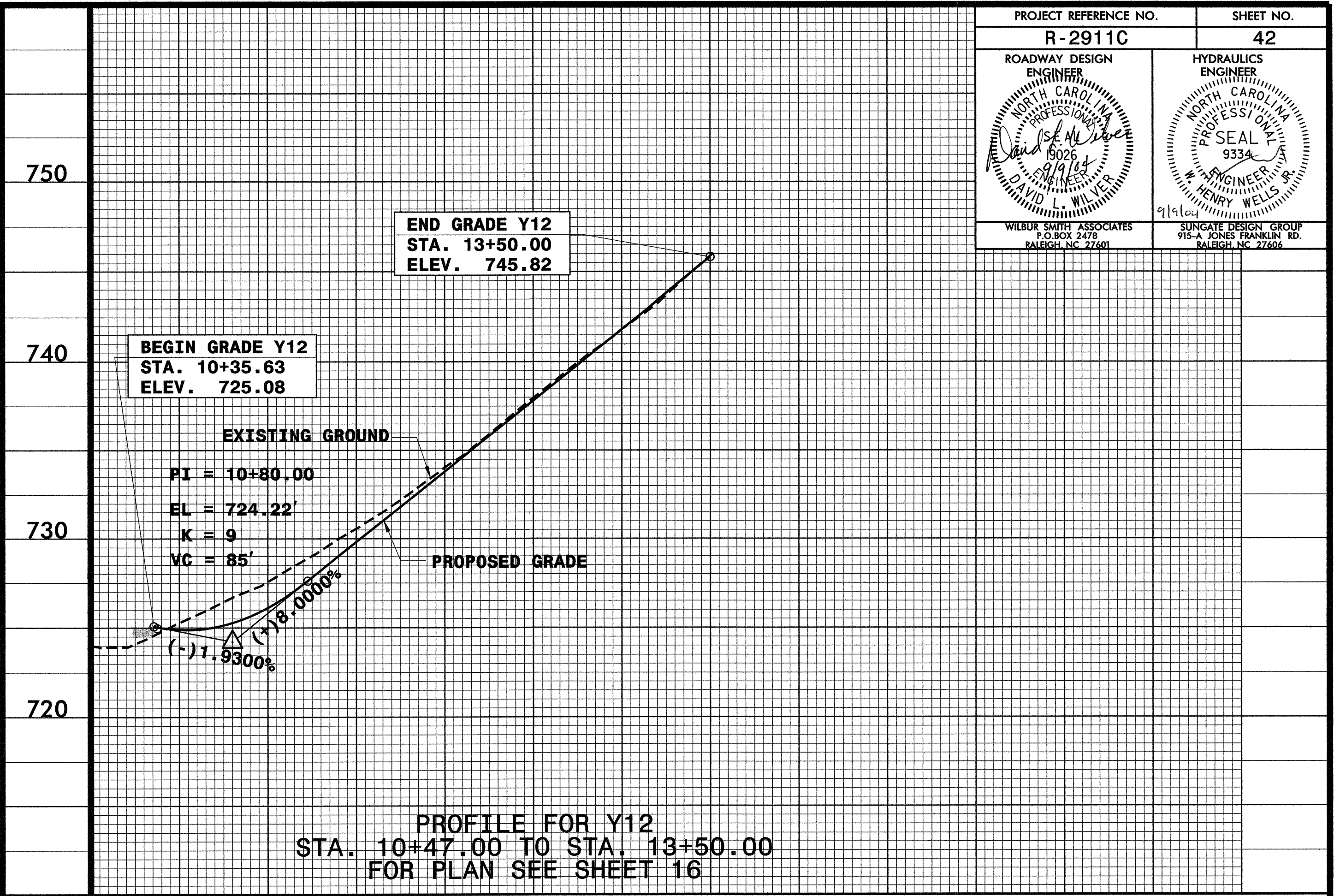
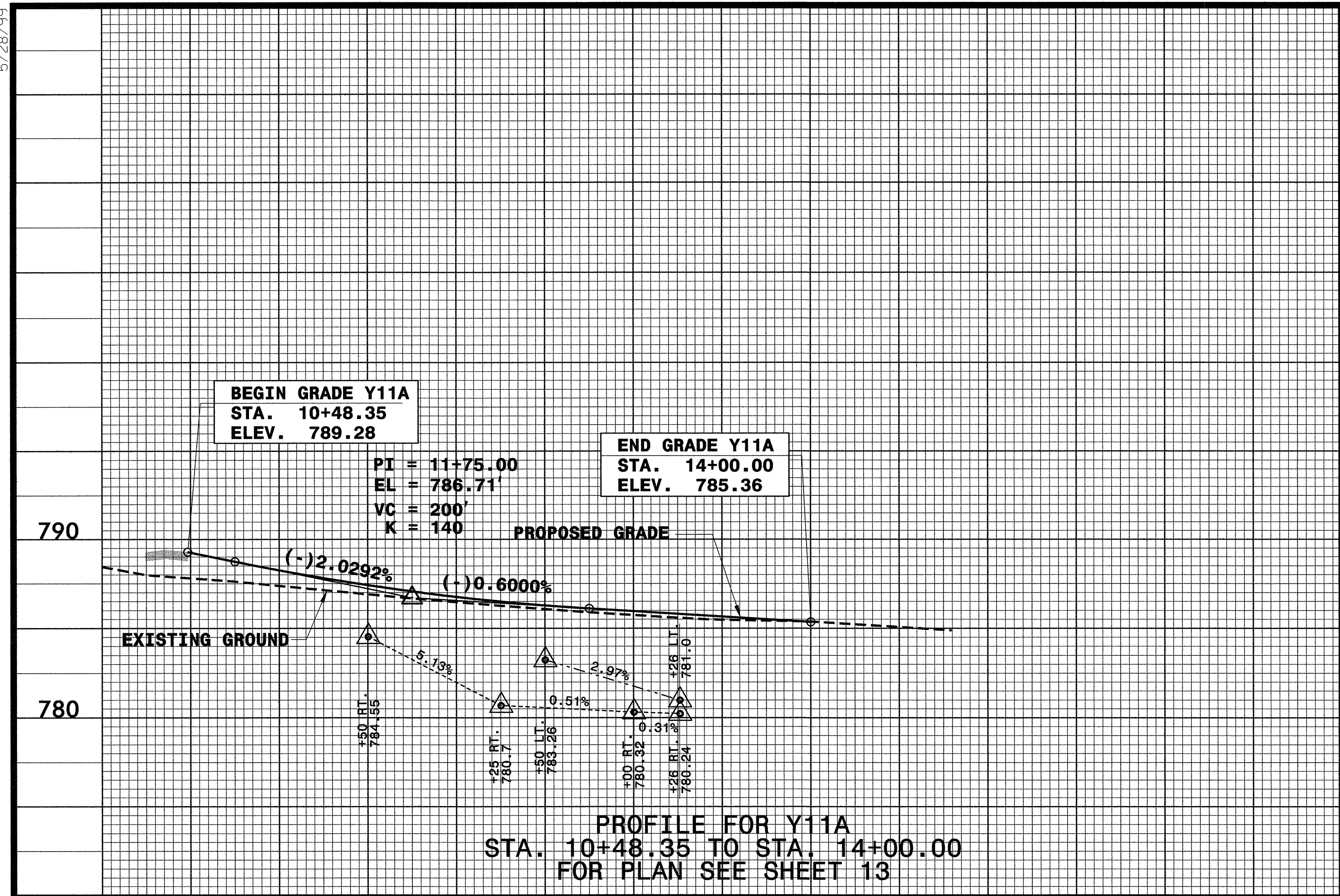


5/28/99

PROJECT REFERENCE NO. R-2911C	SHEET NO. 42
ROADWAY DESIGN ENGINEER NORTH CAROLINA PROFESSIONAL SEAL 9334 WILBUR SMITH ASSOCIATES P.O. BOX 2478 RALEIGH, NC 27601	HYDRAULICS ENGINEER NORTH CAROLINA PROFESSIONAL SEAL 9334 SUNGATE DESIGN GROUP 915-A JONES FRANKLIN RD. RALEIGH, NC 27606



DATE: 9/7/2004 PM
P:\ncad\2011c\roadway\proj\2911c_rdy_42.dgn