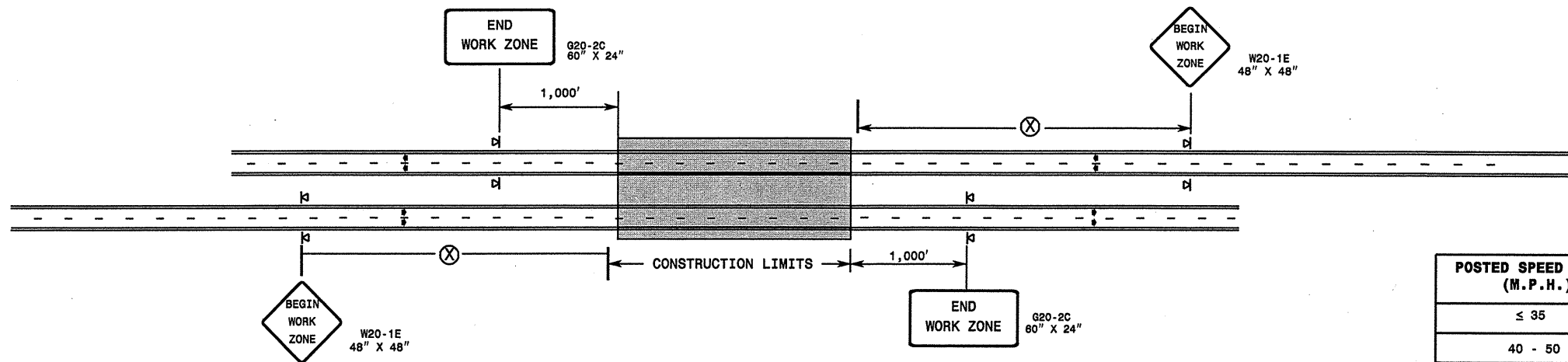


DETAIL A



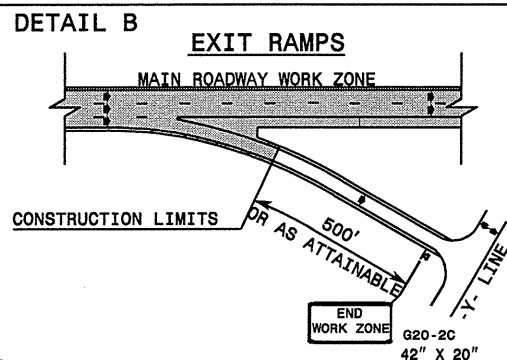
WBS Elements: 37881, 37882, 37883, 37884, 37885, 37886, 37887, 37888, 37889, 37890, 37907, 9CR.10801.3, 9CR.20801.3, 9CR.308008.3, 9CR.308010.3, 9CR.308014.3 & 9CR.308015.3

PROJ. REFERENCE NO. See to the Left	SHEET NO. TCP-3
--	--------------------

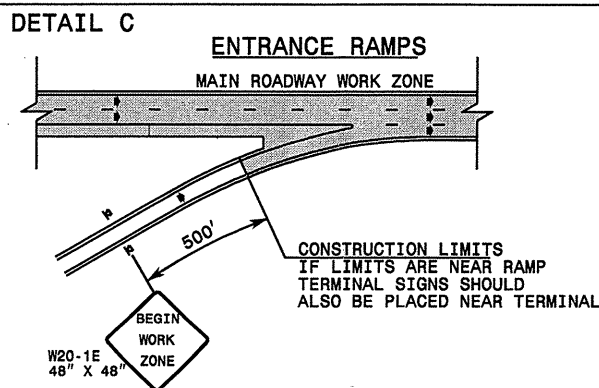
POSTED SPEED LIMIT (M.P.H.)	RECOMMENDED MINIMUM SIGN SPACING
≤ 35	1200'
40 - 50	2200'
55 - 65	6800'

STATE OF NORTH CAROLINA
DEPT. OF TRANSPORTATION
DIVISION OF HIGHWAYS
RALEIGH, N.C.

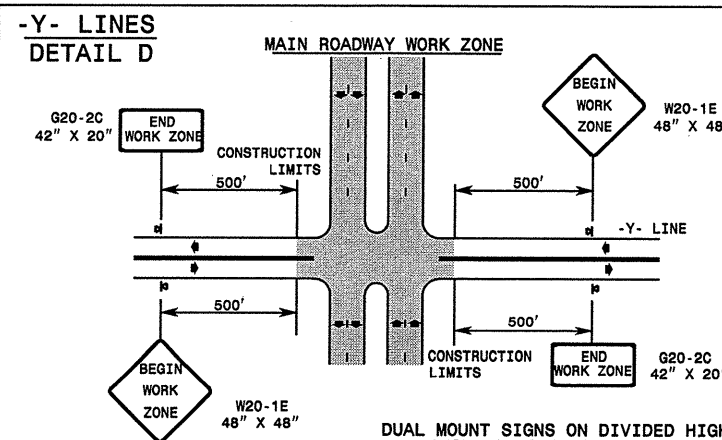
ROADWAYS INTERSECTING ALONG HIGHWAY WORK ZONE



NOTE:
SIGN NOT REQUIRED IF ADVANCE WARNING SIGNS HAVE BEEN PLACED ALONG -Y- LINE THAT RAMP INTERSECTS. IF CONSTRUCTION LIMITS ARE AT END OF RAMP, PLACE SIGN AT END OF RAMP.



CONSTRUCTION LIMITS IF LIMITS ARE NEAR RAMP TERMINAL SIGNS SHOULD ALSO BE PLACED NEAR TERMINAL



DUAL MOUNT SIGNS ON DIVIDED HIGHWAYS AND INCREASE SIGN SPACING TO 1000'+/-

GENERAL NOTES

- DO NOT INSTALL ADVANCE WARNING SIGNS MORE THAN 3 DAYS PRIOR TO BEGINNING OF WORK.
- ALL SIGN SPACING DIMENSIONS ARE APPROXIMATE, FIELD ADJUST AS NECESSARY OR AS DIRECTED.
- WHEN THERE ARE CONSTRUCTION LIMITS ON A DIVIDED -Y- LINE GREATER THAN 1 MILE IN LENGTH, USE THE SAME SIGNING AS FOR A MAIN ROADWAY WORK ZONE. (SEE DETAIL A)
- USE PORTABLE SIGNS.

LEGEND	
⊠	PORTABLE SIGN
➔	DIRECTION OF TRAFFIC FLOW

SHEET 1 OF 1

DETAIL DRAWING FOR INTERSTATE AND FREEWAY WORK ZONE SIGNS (SHORT-DURATION LANE CLOSURES)

APPROVED:	DATE:	DETAIL DRAWING FOR INTERSTATE AND FREEWAY WORK ZONE SIGNS	
SEAL	SCALE:	NONE	REVISIONS
	DATE:	09-06-2001	
	DWG. BY:	MMM	
	DESIGN BY:	MMM	
	REVIEWED BY:		