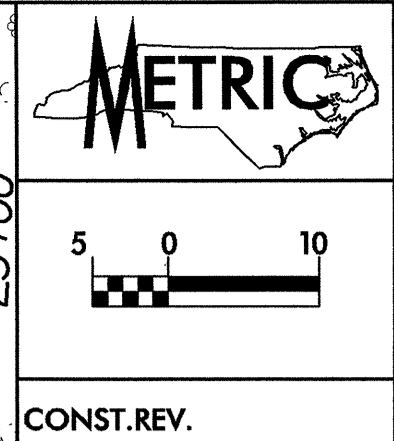
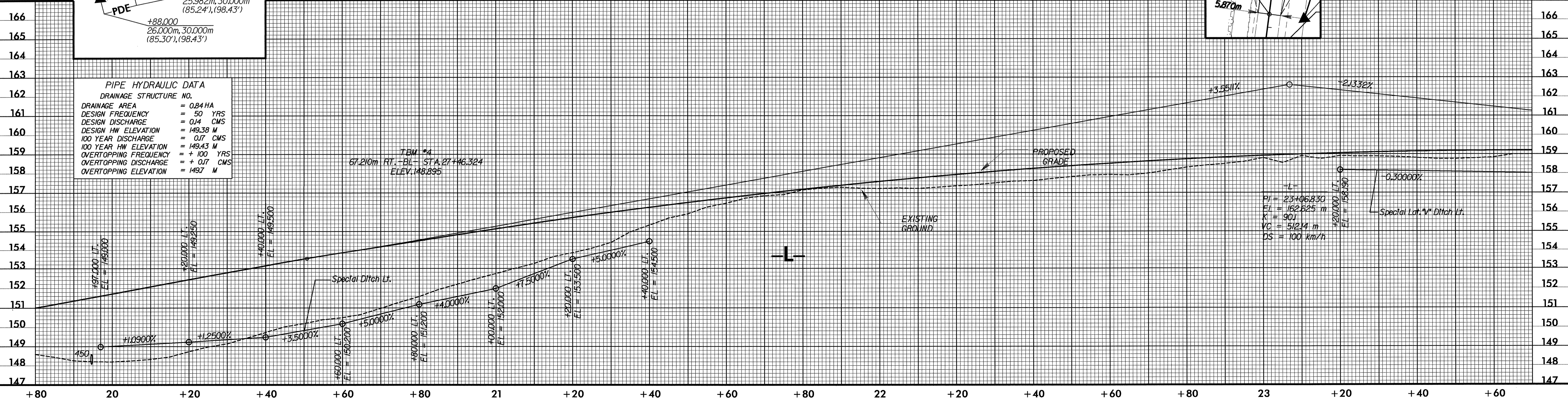
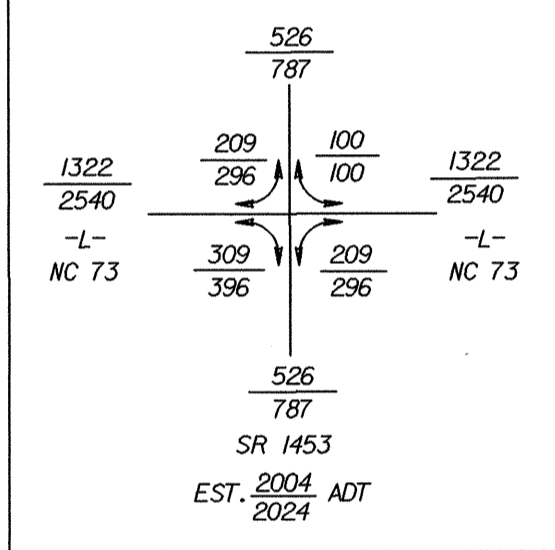
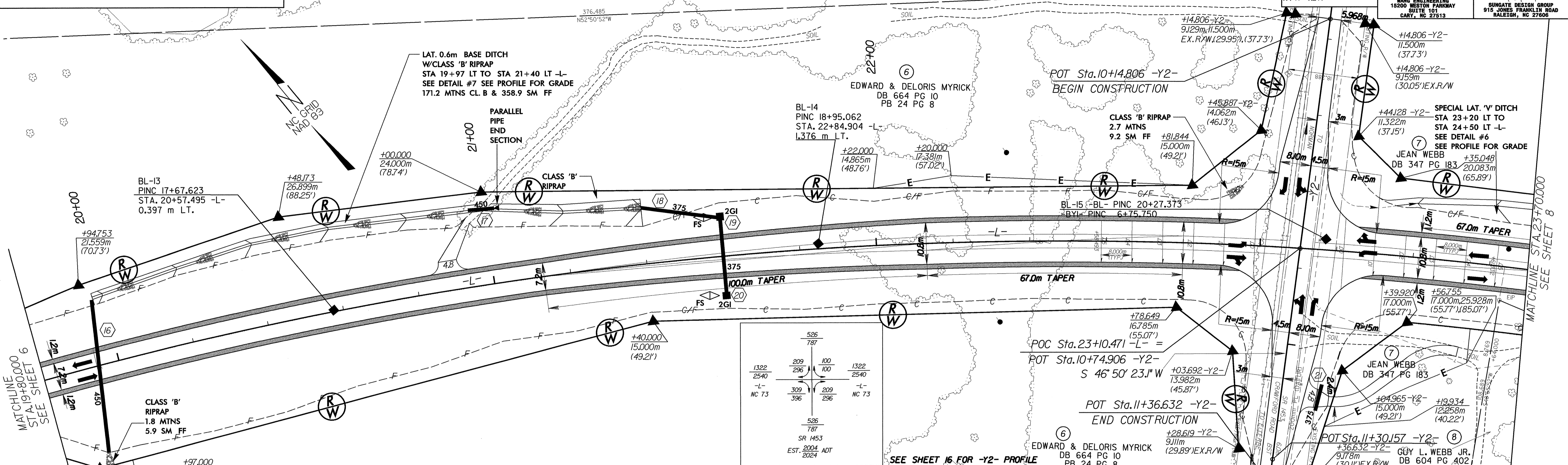


LYRLIE TREE
DB 285 PG 165
PB 24 PG 8

-L-
PI Sta 22+23.606
 $\Delta = 54' 22'' 50.9'' (RT)$
 $L = 949.24$
 $T = 513.719$
 $R = 1,000.000$
 $S_e = 0.05$
 $S_e \cdot runoff = 40$
 $Tro = 16$



PROJECT REFERENCE NO. R-3303 SHEET NO. 7
R/W SHEET NO.
ROADWAY DESIGN ENGINEER
HYDRAULICS ENGINEER
WANG ENGINEERING
15200 WESTON PARKWAY
SUITE 101
CARY, NC 27513
JEAN WEBB
DB 347 PG 183
GUY L. WEBB JR.
DB 604 PG 402



PIPE HYDRAULIC DATA
DRAINAGE STRUCTURE NO.

DRAINAGE AREA	= 0.84 HA
DESIGN FREQUENCY	= 50 YRS
DESIGN DISCHARGE	= 0.14 CMS
DESIGN HW ELEVATION	= 149.38 M
100 YEAR DISCHARGE	= 0.17 CMS
100 YEAR HW ELEVATION	= 149.43 M
OVERTOPPING FREQUENCY	= + 100 YRS
OVERTOPPING DISCHARGE	= + 0.17 CMS
OVERTOPPING ELEVATION	= 149.7 M

TEM #4
67.210m RT. -BL- STA. 21+16.324
ELEV. 148.895

-L-
PI = 23+06.830
EI = 162.625 m
K = 90
VC = 52.24 m
DS = 100 km/h