

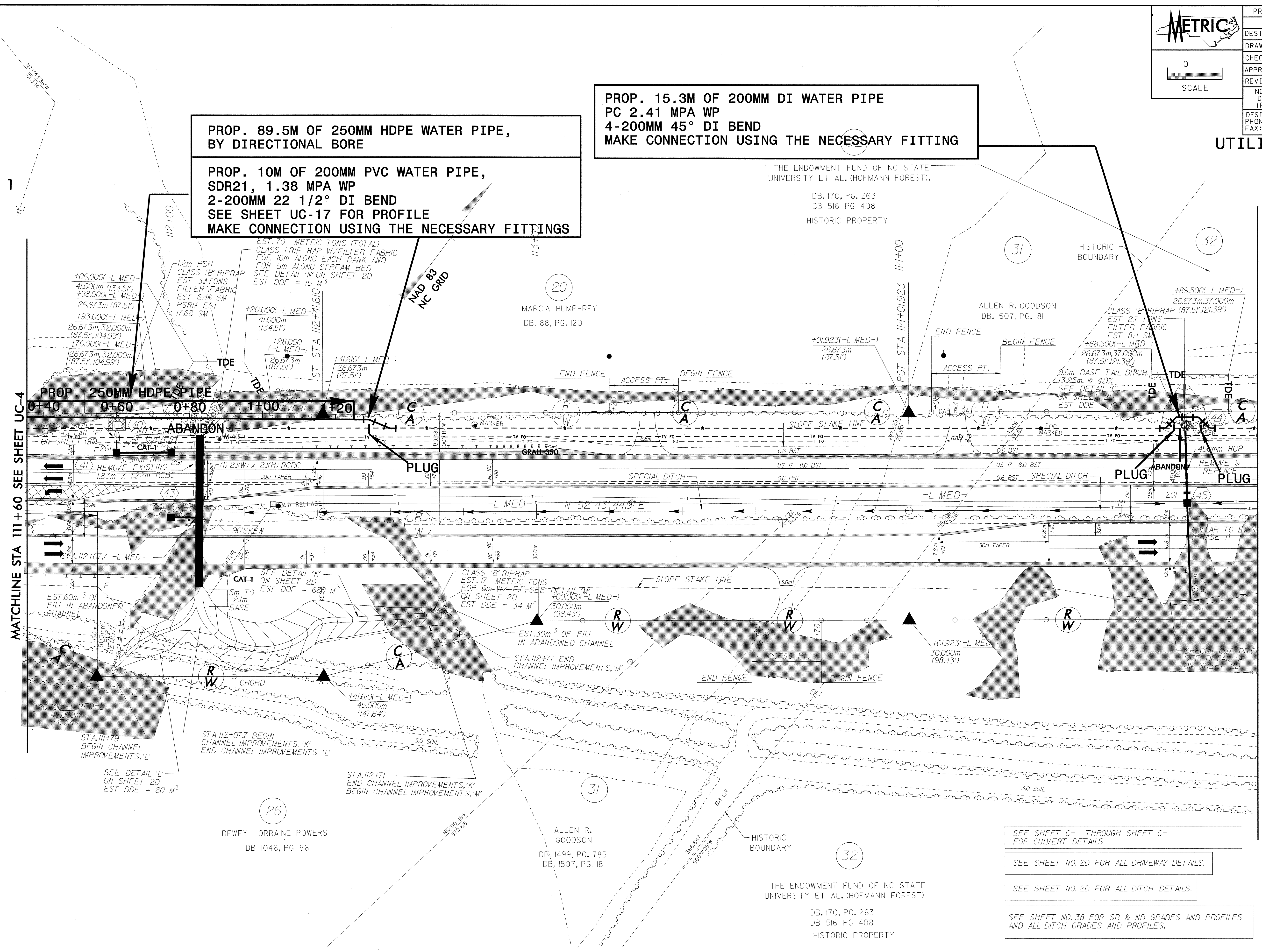
PROJECT REFERENCE NO.	R-2514A	SHEET NO.	UC-5
DESIGNED BY:	ARK		
DRAWN BY:	ARK		
CHECKED BY:	GYS		
APPROVED BY:	GYS		
REVISED:		NORTH CAROLINA DEPARTMENT OF TRANSPORTATION DESIGN SERVICES UNIT PHONE: (919) 250-4128 FAX: (919) 250-4119	
			UTILITY CONSTRUCTION PLANS ONLY

**PROP. 15.3M OF 200MM DI WATER PIPE
PC 2.41 MPA WP
4-200MM 45° DI BEND
MAKE CONNECTION USING THE NECESSARY FITTING**

**PROP. 89.5M OF 250MM HDPE WATER PIPE,
BY DIRECTIONAL BORE**

**PROP. 10M OF 200MM PVC WATER PIPE,
SDR21, 1.38 MPA WP
2-200MM 22 1/2° DI BEND
SEE SHEET UC-17 FOR PROFILE
MAKE CONNECTION USING THE NECESSARY FITTINGS**

UTILITY CONSTRUCTION



- SEE SHEET C- THROUGH SHEET C- FOR CULVERT DETAILS
- SEE SHEET NO. 2D FOR ALL DRIVEWAY DETAILS.
- SEE SHEET NO. 2D FOR ALL DITCH DETAILS.
- SEE SHEET NO. 38 FOR SB & NB GRADES AND PROFILES AND ALL DITCH GRADES AND PROFILES.

04-10-2008 10:58 AM
 R:\Projects\2514A\2514A-FDY-PSH-08_UC-5.dgn
 04-10-2008 10:58 AM
 R:\Projects\2514A\2514A-FDY-PSH-08_UC-5.dgn