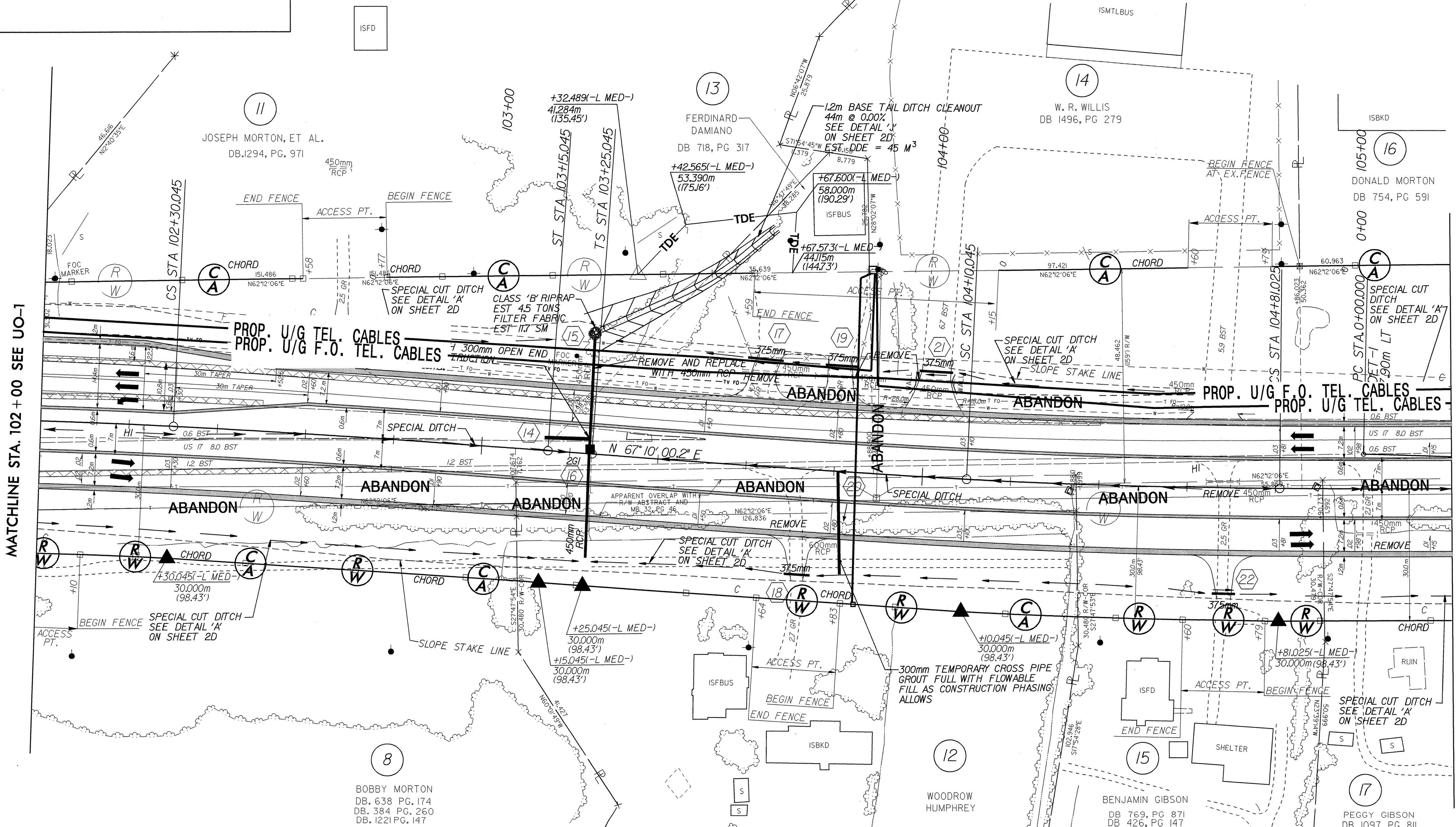


UTILITIES BY OTHERS

NOTE:
ALL PROPOSED UTILITY WORK
SHOWN ON THIS SHEET WILL
BE DONE BY OTHERS

REVISIONS

*Date: 9/13/02 - Parcels 11,13,14&16; Revised Property Lines
*Date: 3/21/03 - Revisions per Right of Way Division Letter Dated 1/31/03



MATCHLINE STA. 102 +00 SEE UO-1

MATCHLINE 105 +20 SEE SHEET UO-3

-L MED-		
Pls Sta 103+81.713	Pl Sta 104+45.539	Pls Sta 105+09.359
$\theta s = 1^\circ 21' 10.1''$	$\Delta = 2^\circ 15' 33.7''$ (LT)	$\theta s = 1^\circ 21' 10.1''$
$Ls = 85,000$	$L = 70,980$	$Ls = 85,000$
$LT = 56,668$	$T = 35,495$	$LT = 56,668$
$ST = 28,335$	$R = 1,800,000$	$ST = 28,335$
	$SE = 0.03$	

DET-1

Pl Sta 0+41.190
$\Delta = 3^\circ 08' 45.3''$ (RT)
$L = 82,360$
$T = 41,190$
$R = 1,500,000$
$SE = 0.02$

SEE SHEET NO. 2D FOR ALL DITCH DETAILS.

SEE SHEET NO. 2D FOR ALL DRIVEWAY DETAILS.

SEE SHEET NO. 35 FOR NBL & SBL GRADES AND PROFILES AND ALL DITCH GRADES AND PROFILES.

24-N114-11-29-01-2003-14448-2514A-RD1-FSH-05-UD-2.dgn
 6/10/03
 04/25/03