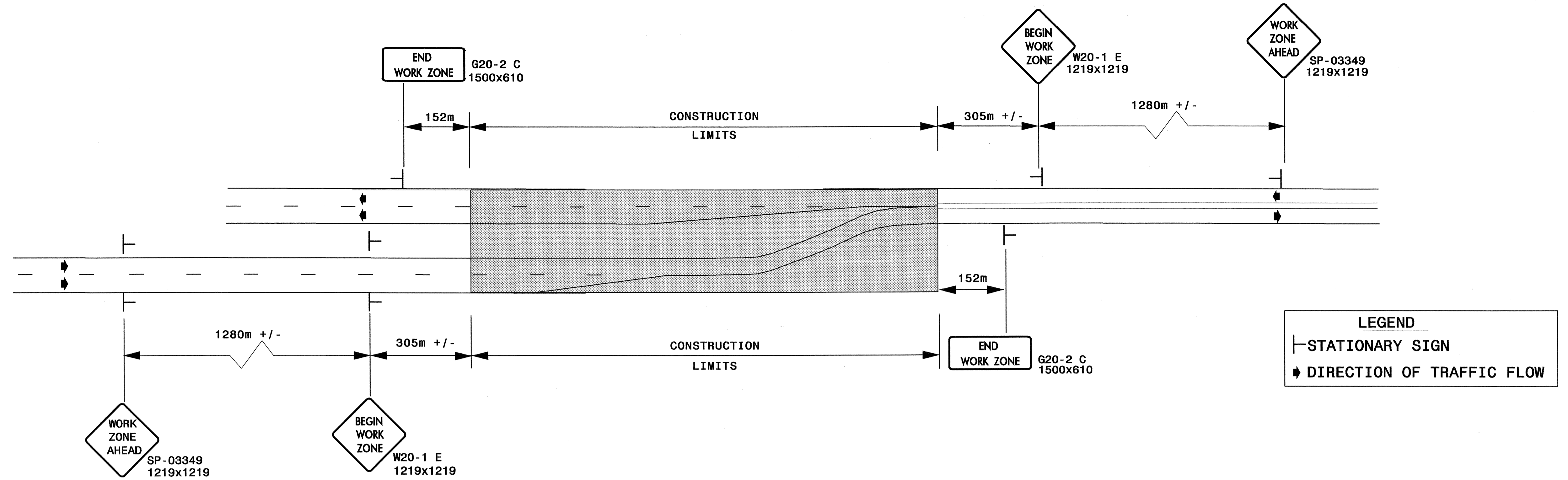


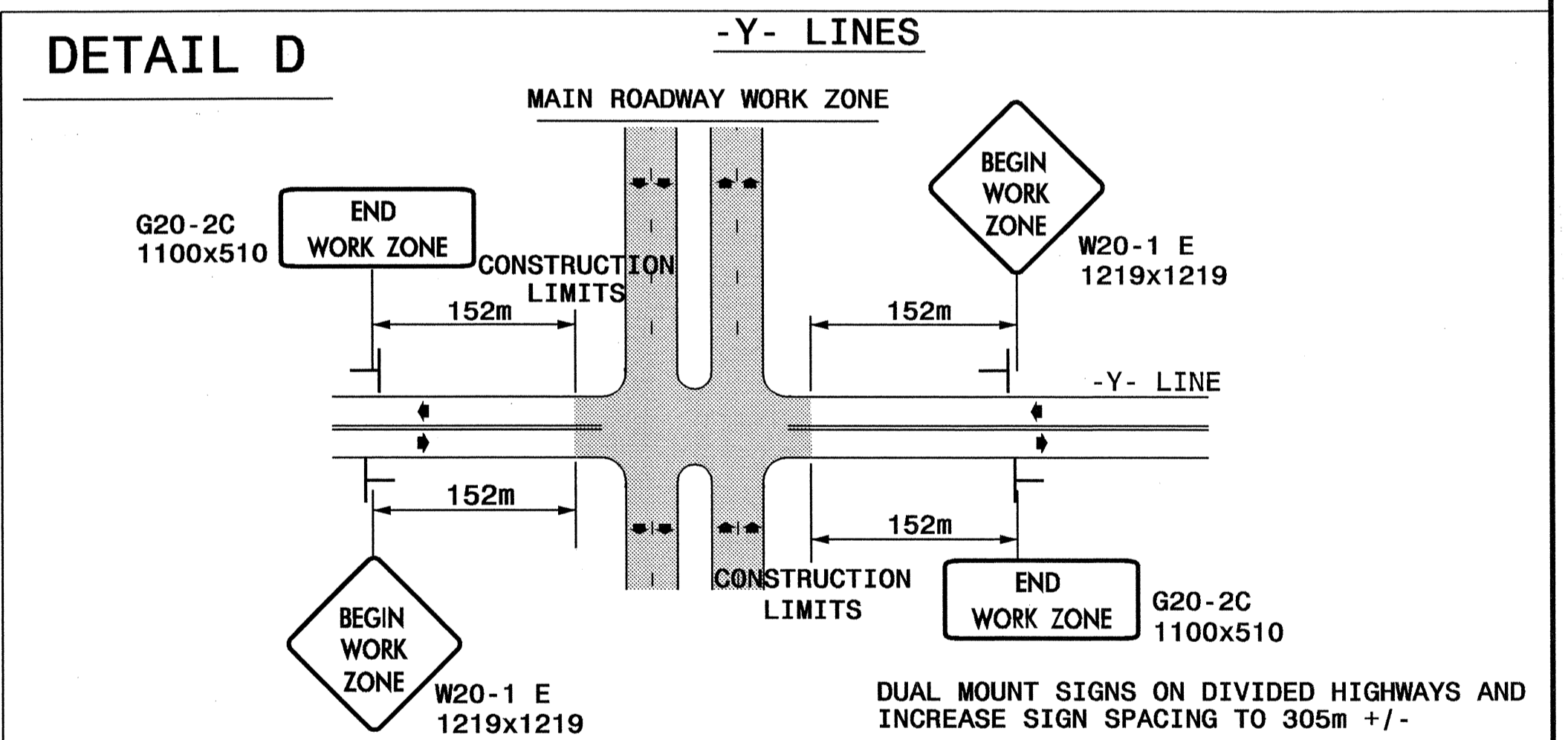
ADVANCED WORK ZONE WARNING SIGNING FOR FREEWAYS

| | |
|---------------------|-----------|
| PROJ. REFERENCE NO. | SHEET NO. |
| R-2514A | TCP-45 |

DETAIL A



DETAIL D



GENERAL NOTES

- USE TYPE I AND TYPE II SHEETING FOR ALL WORK ZONE WARNING SIGNS UNTIL THE EXISTING TYPE I AND TYPE II SHEETING INVENTORIES ARE EXHAUSTED, OTHERWISE USE TYPE VII SHEETING OR HIGHER. (STANDARD PRACTICE FOR SIGN SHEETING, S-68)
- DO NOT INSTALL ADVANCE WARNING SIGNS MORE THAN 3 DAYS PRIOR TO BEGINNING OF WORK.
- SIGNS SHOWN ARE REQUIRED FOR WORK ZONES THAT WILL REMAIN IN EFFECT OVERNIGHT. FOR SHORT-TERM DAILY MAINTENANCE TYPE OPERATIONS, THIS SIGNING APPLICATION IS OPTIONAL; MAY USE ONLY APPLICABLE ROADWAY STANDARD DRAWINGS INSTEAD. HOWEVER, IF THIS SIGNING APPLICATION IS USED, SIGNS MAY BE PORTABLE MOUNTED.
- ALL SIGN SPACING DIMENSIONS ARE APPROXIMATE, FIELD ADJUST AS NECESSARY OR AS DIRECTED.
- USE 1.4Kg STEEL U-CHANNEL POST OR 90mmx90mm WOOD POST FOR ALL WORK ZONE SIGNS. 1.4Kg STEEL U-CHANNEL POSTS MUST MEET THE REQUIREMENTS OF STANDARD SPECIFICATION SECTION 1094-1(B), MAY BE GALVANIZED STEEL, OR MAY BE PAINTED GREEN BY THE POST MANUFACTURER. SQUARE STEEL TUBING POSTS HAVING EQUIVALENT STRENGTH OF THE 1.4Kg STEEL U-CHANNEL POST ARE ALSO ACCEPTABLE FOR USE. ERECT SIGNS PER ROADWAY STANDARD DRAWING 1110.01. PAYMENT FOR WOOD POSTS, 1.4Kg STEEL U-CHANNEL AND SQUARE STEEL TUBING POSTS WITH SIGNS WILL BE MADE ACCORDING TO STANDARD SPECIFICATION "WORK ZONE SIGNS" SECTION 1110.
- WHEN NECESSARY, USE SPLICING IN ACCORDANCE WITH ROADWAY STANDARD DRAWING NO. 1110.01. REMOVE ENTIRE POST WHEN REMOVING SIGNS WITH SPLICED POSTS.
- DO NOT BACK BRACE SIGN SUPPORTS.

| | | | |
|--------------------------------|----------------|---|-----------|
| APPROVED: | DATE: | ADVANCED WORK ZONE WARNING SIGNS | |
| | SCALE: NONE | | REVISIONS |
| | DATE: 11/18/03 | | |
| | DESIGN BY: KWD | | |
| | REVIEWED BY: | | |
| CARD FILE R-2514A_TC_TCP45.DGN | | | |

23-NOV-2003 09:34
G:\CAD\TDC\2514A_TrafficControl\TCP\R-2514A_TC_TCP45.dgn
G:\CAD\TDC\2514A_TrafficControl\TCP\R-2514A_TC_TCP45.dgn
G:\CAD\TDC\2514A_TrafficControl\TCP\R-2514A_TC_TCP45.dgn