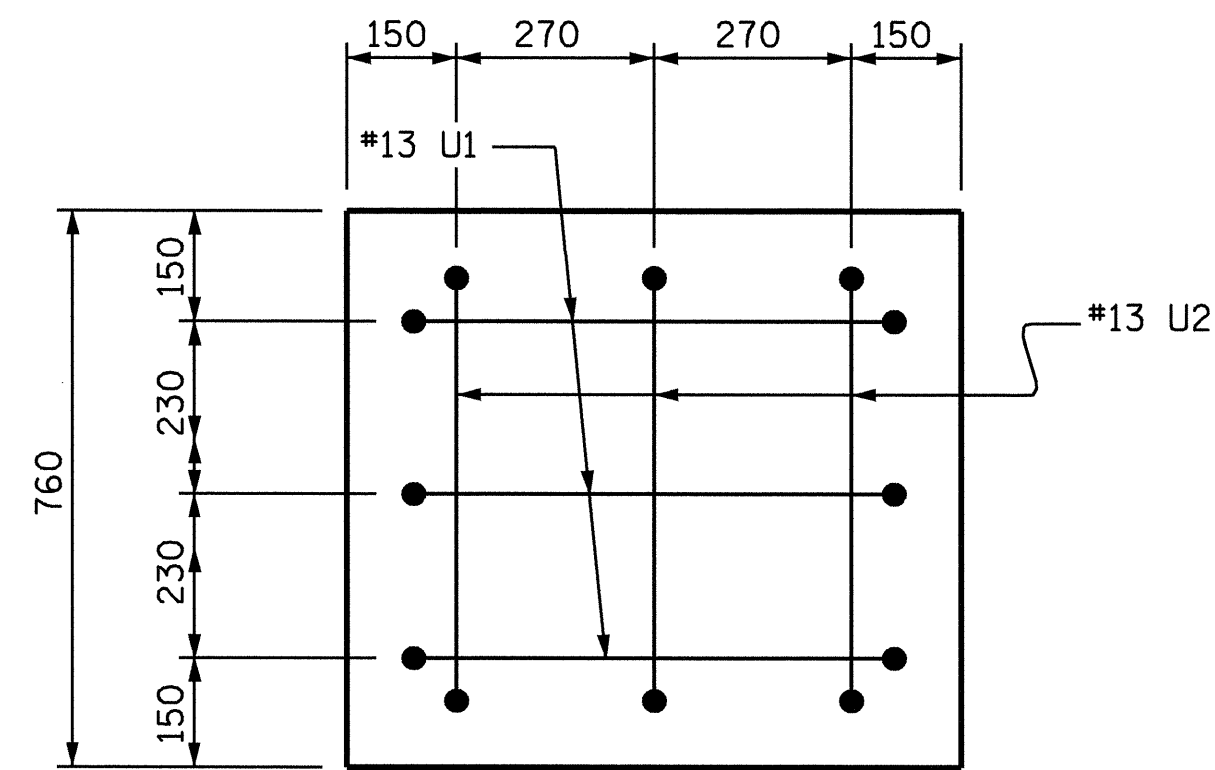
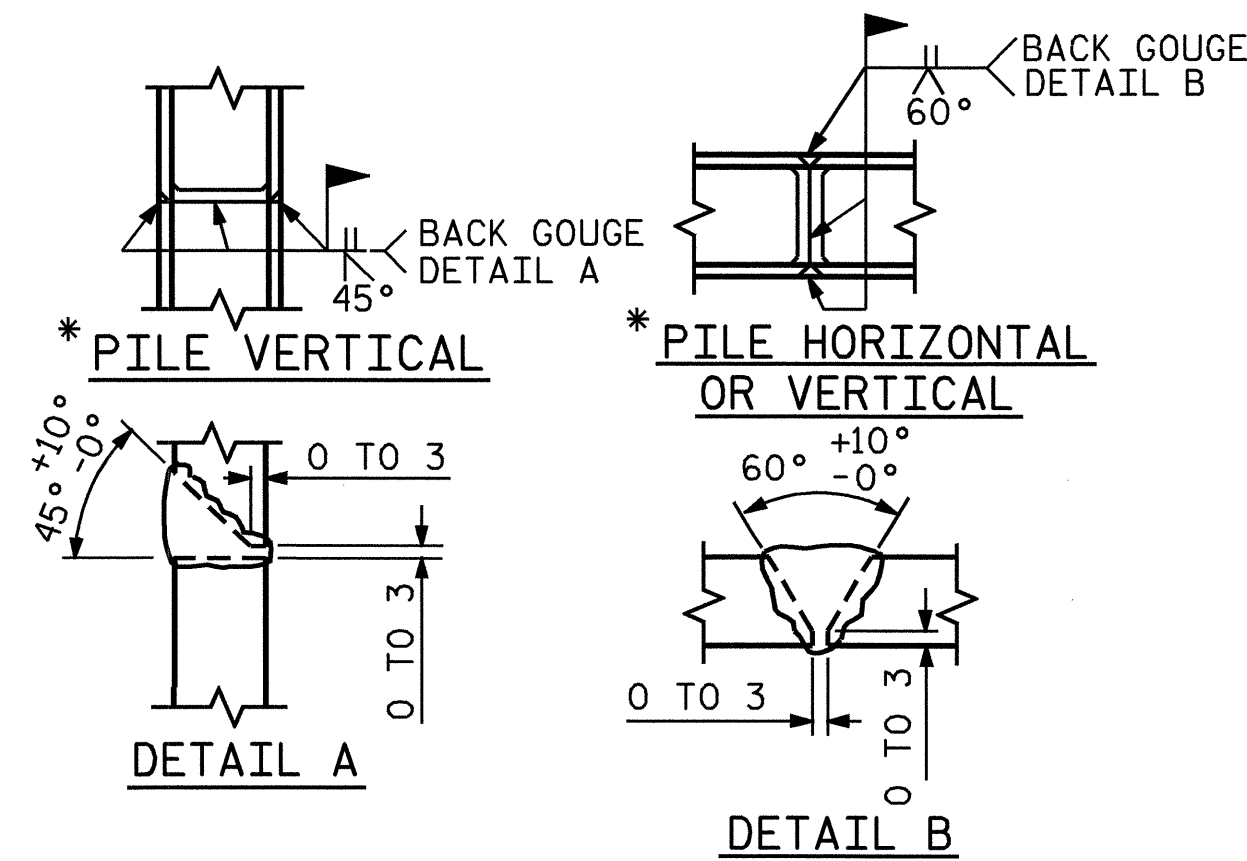


SECTION THRU CAP

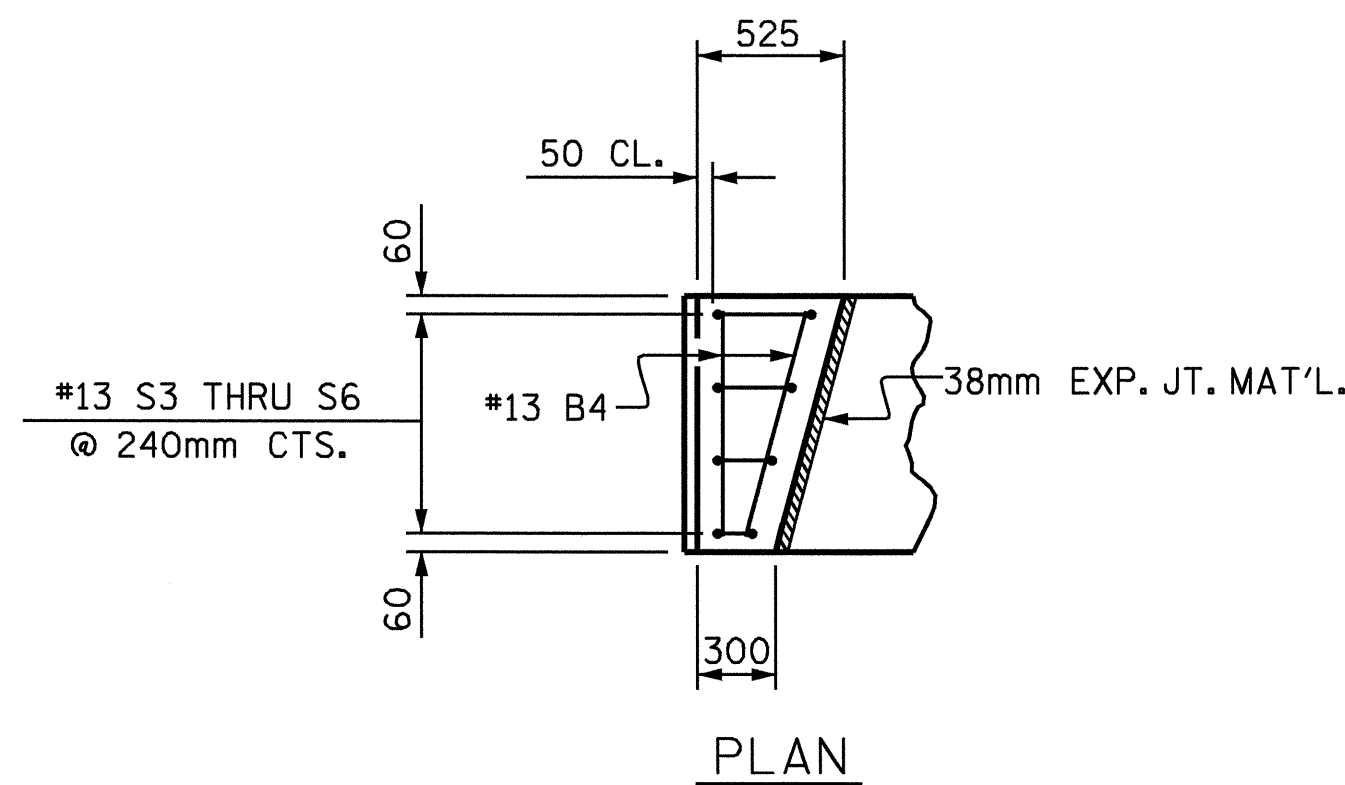


VIEW "X-X"

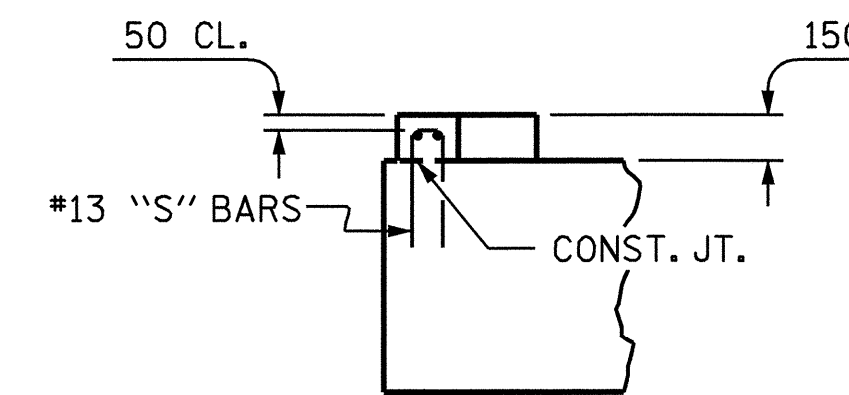
BAR TYPES		BILL OF MATERIAL																																																																																																								
		BENT #1																																																																																																								
		<table border="1"> <thead> <tr> <th>BAR NO.</th> <th>SIZE</th> <th>TYPE</th> <th>LENGTH</th> <th>WEIGHT</th> </tr> </thead> <tbody> <tr><td>B1</td><td>4</td><td>#32</td><td>1</td><td>14940</td><td>383</td></tr> <tr><td>B2</td><td>4</td><td>#32</td><td>STR</td><td>14120</td><td>362</td></tr> <tr><td>B3</td><td>16</td><td>#13</td><td>STR</td><td>7440</td><td>118</td></tr> <tr><td>B4</td><td>16</td><td>#13</td><td>STR</td><td>740</td><td>12</td></tr> <tr><td colspan="5"> </td></tr> <tr><td>D1</td><td>56</td><td>#19</td><td>STR</td><td>460</td><td>58</td></tr> <tr><td colspan="5"> </td></tr> <tr><td>S1</td><td>54</td><td>#16</td><td>2</td><td>2320</td><td>194</td></tr> <tr><td>S2</td><td>16</td><td>#13</td><td>3</td><td>1980</td><td>31</td></tr> <tr><td>S3</td><td>2</td><td>#13</td><td>4</td><td>780</td><td>2</td></tr> <tr><td>S4</td><td>2</td><td>#13</td><td>4</td><td>840</td><td>2</td></tr> <tr><td>S5</td><td>2</td><td>#13</td><td>4</td><td>900</td><td>2</td></tr> <tr><td>S6</td><td>2</td><td>#13</td><td>4</td><td>980</td><td>2</td></tr> <tr><td colspan="5"> </td></tr> <tr><td>U1</td><td>6</td><td>#13</td><td>4</td><td>1300</td><td>8</td></tr> <tr><td>U2</td><td>6</td><td>#13</td><td>4</td><td>1200</td><td>7</td></tr> <tr><td>U3</td><td>2</td><td>#29</td><td>4</td><td>2920</td><td>30</td></tr> </tbody> </table>	BAR NO.	SIZE	TYPE	LENGTH	WEIGHT	B1	4	#32	1	14940	383	B2	4	#32	STR	14120	362	B3	16	#13	STR	7440	118	B4	16	#13	STR	740	12						D1	56	#19	STR	460	58						S1	54	#16	2	2320	194	S2	16	#13	3	1980	31	S3	2	#13	4	780	2	S4	2	#13	4	840	2	S5	2	#13	4	900	2	S6	2	#13	4	980	2						U1	6	#13	4	1300	8	U2	6	#13	4	1200	7	U3	2	#29	4	2920	30
BAR NO.	SIZE	TYPE	LENGTH	WEIGHT																																																																																																						
B1	4	#32	1	14940	383																																																																																																					
B2	4	#32	STR	14120	362																																																																																																					
B3	16	#13	STR	7440	118																																																																																																					
B4	16	#13	STR	740	12																																																																																																					
D1	56	#19	STR	460	58																																																																																																					
S1	54	#16	2	2320	194																																																																																																					
S2	16	#13	3	1980	31																																																																																																					
S3	2	#13	4	780	2																																																																																																					
S4	2	#13	4	840	2																																																																																																					
S5	2	#13	4	900	2																																																																																																					
S6	2	#13	4	980	2																																																																																																					
U1	6	#13	4	1300	8																																																																																																					
U2	6	#13	4	1200	7																																																																																																					
U3	2	#29	4	2920	30																																																																																																					
		<table border="1"> <thead> <tr> <th>REINFORCING STEEL</th> <th>WEIGHT</th> </tr> </thead> <tbody> <tr> <td>REINFORCING STEEL</td> <td>= 1211 KG</td> </tr> </tbody> </table>	REINFORCING STEEL	WEIGHT	REINFORCING STEEL	= 1211 KG																																																																																																				
REINFORCING STEEL	WEIGHT																																																																																																									
REINFORCING STEEL	= 1211 KG																																																																																																									
		<p>CLASS "A" CONCRETE BREAKDOWN</p> <p>POUR #1 (CAP) = 9.1 m³</p> <p>POUR #2 (LATERAL GUIDE) = 0.1 m³</p> <p>CLASS "A" CONCRETE TOTAL = 9.2 m³</p>																																																																																																								
<p>ALL BAR DIMENSIONS ARE OUT TO OUT</p>		<p>HP 310 X 79 STEEL PILES</p> <p>NO. 8 120.0 m</p>	<p>GALVANIZING STEEL PILES LUMP SUM</p>																																																																																																							



PILE SPLICE DETAILS



PLAN



ELEVATION

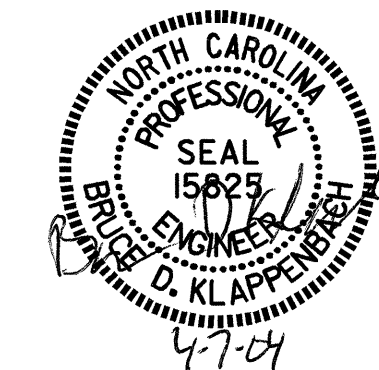
LATERAL GUIDE DETAILS

PROJECT NO. R-2514A
ONslow COUNTY
 STATION: 182+87.400-L-MED

SHEET 2 OF 2

STATE OF NORTH CAROLINA
 DEPARTMENT OF TRANSPORTATION
 RALEIGH

SUBSTRUCTURE
 BENT #1
 RIGHT LANE



REVISIONS					SHEET NO.
NO.	BY:	DATE:	NO.	BY:	DATE:
1			3		
2			4		
					TOTAL SHEETS
					46

DRAWN BY: D. A. GLADDEN DATE: 10-31-03
 CHECKED BY: G.M. Patterson DATE: 12-09-03

07-APR-2004 11:43
 W:\squad\N2514a\Strland2\dgladden\Microstation\xR2514A.sd.BI.02.dgn
 dgladden