

REVISIONS

TAYLOR WISEMAN & TAYLOR
ENGINEERS • SURVEYORS • PLANNERS
G.P.S. • SUBSURFACE UTILITY ENGINEERING
4817 W. TERS' EDGE DRIVE, SUITE 126, RALEIGH, N.C. 27608
TELEPHONE NO. (919)859-8232 FAX NO. (919)859-8235

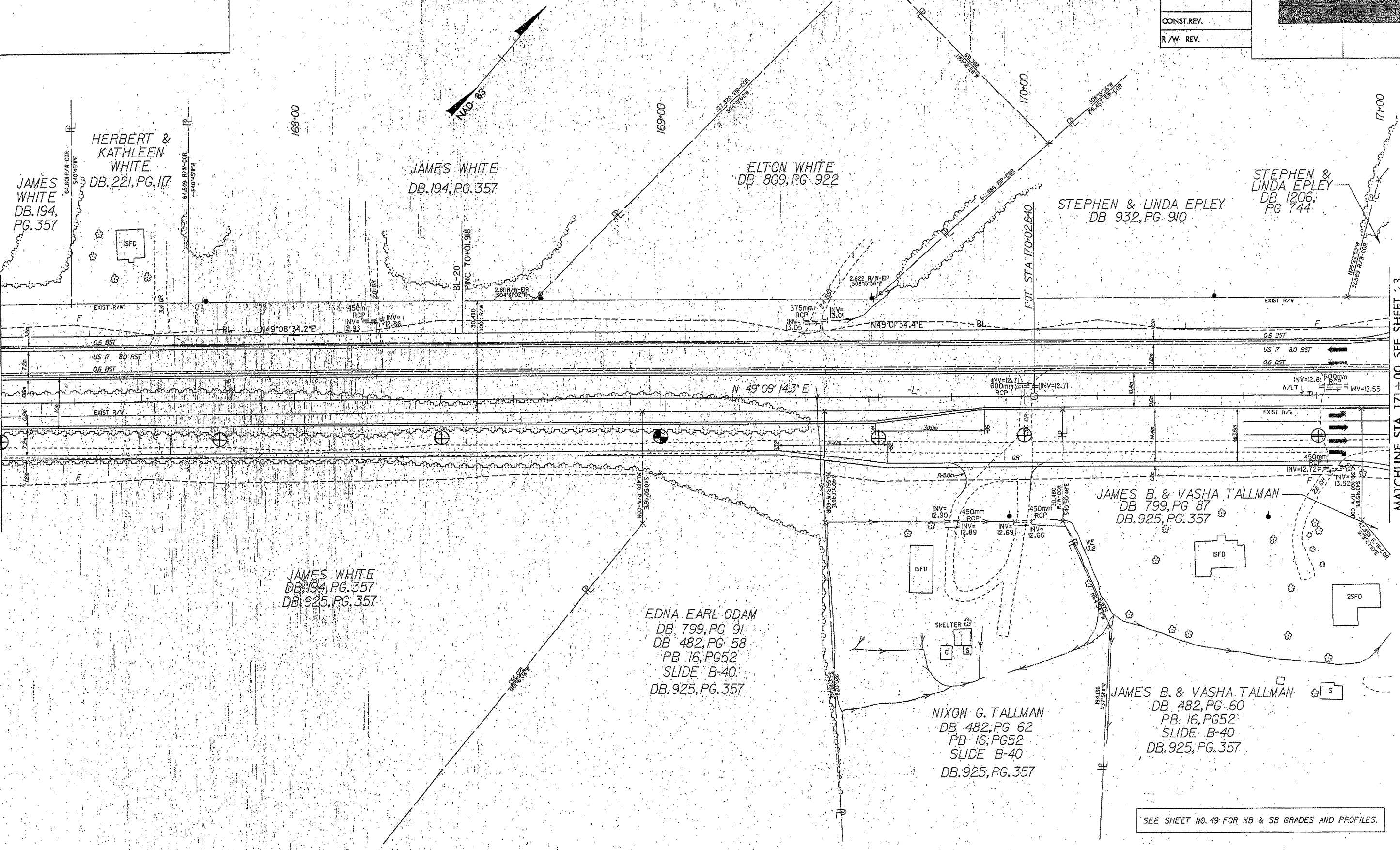
METRIC

CONST. REV.
R/W REV.

| | |
|----------------------------------|---------------------|
| PROJECT REFERENCE NO. R2514-A | SHEET NO. 22 |
| R/W SHEET NO. | |
| ROADWAY DESIGN ENGINEER | HYDRAULICS ENGINEER |

MATCHLINE STA 167+20 SEE SHEET 21

MATCHLINE STA 171+00 SEE SHEET 23



JAMES WHITE
DB. 194, PG. 357

HERBERT &
KATHLEEN
WHITE
DB. 221, PG. 117

JAMES WHITE
DB. 194, PG. 357

ELTON WHITE
DB. 809, PG. 922

STEPHEN & LINDA EPLEY
DB. 932, PG. 910

STEPHEN &
LINDA EPLEY
DB. 1206,
PG. 744

JAMES WHITE
DB. 194, PG. 357
DB. 925, PG. 357

EDNA EARL ODAM
DB. 799, PG. 91
DB. 482, PG. 58
PB. 16, PG. 52
SLIDE B-40
DB. 925, PG. 357

NIXON G. TALLMAN
DB. 482, PG. 62
PB. 16, PG. 52
SLIDE B-40
DB. 925, PG. 357

JAMES B. & VASHA TALLMAN
DB. 799, PG. 87
DB. 925, PG. 357

JAMES B. & VASHA TALLMAN
DB. 482, PG. 60
PB. 16, PG. 52
SLIDE B-40
DB. 925, PG. 357

SEE SHEET NO. 49 FOR NB & SB GRADES AND PROFILES.

19-MAR-1998 08:16:16 h:\g\m\g\p\22.dgn