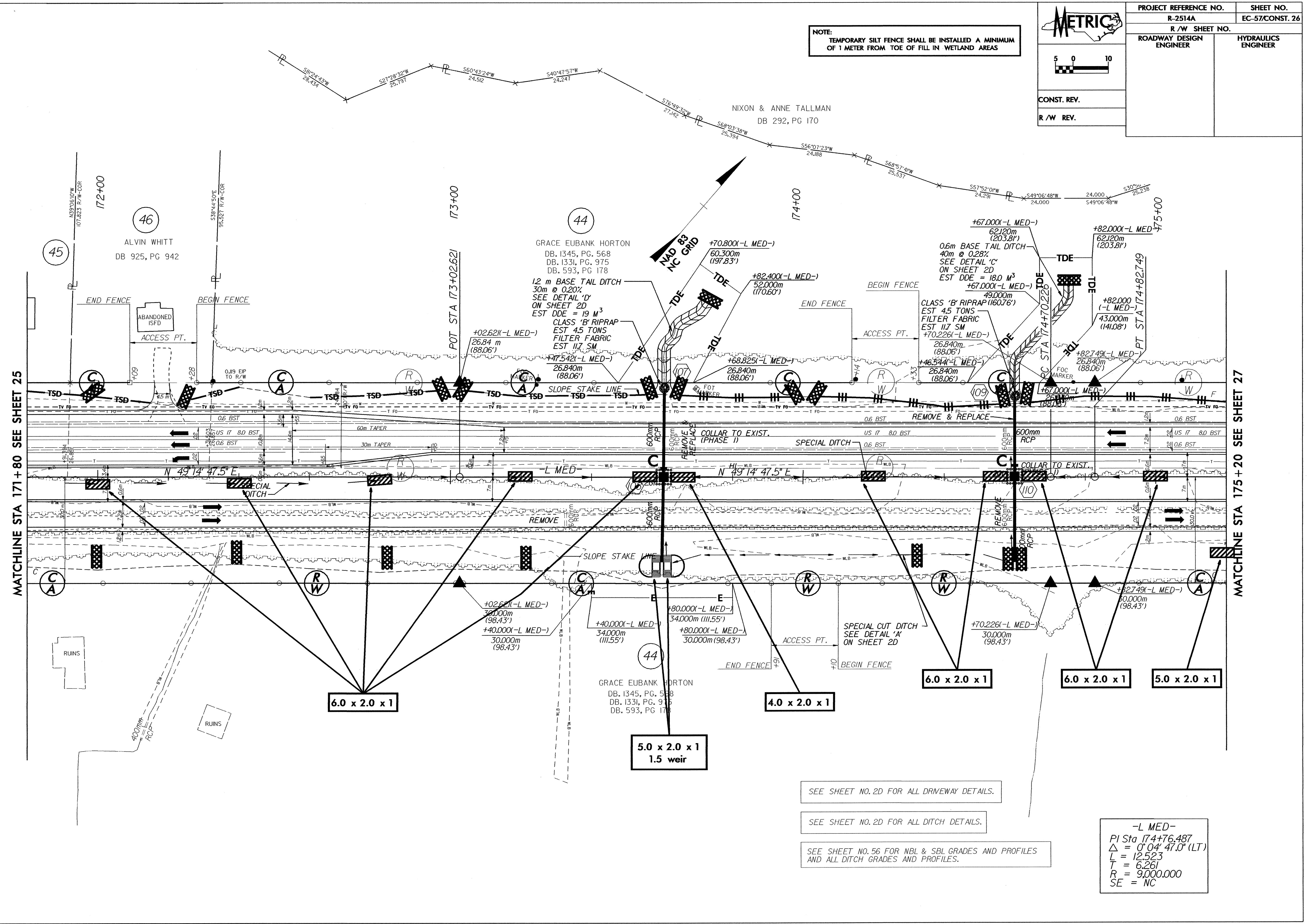
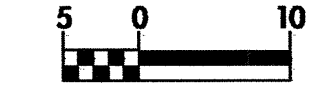
	PROJECT REFERENCE NO.	SHEET NO.
	R-2514A	EC-57/CONST. 26
	R/W SHEET NO.	
ROADWAY DESIGN ENGINEER	HYDRAULICS ENGINEER	
CONST. REV.		
R/W REV.		

NOTE:
TEMPORARY SILT FENCE SHALL BE INSTALLED A MINIMUM OF 1 METER FROM TOE OF FILL IN WETLAND AREAS



SEE SHEET NO. 2D FOR ALL DRIVEWAY DETAILS.

SEE SHEET NO. 2D FOR ALL DITCH DETAILS.

SEE SHEET NO. 56 FOR NBL & SBL GRADES AND PROFILES AND ALL DITCH GRADES AND PROFILES.

-L MED-
 PI Sta 174+76.487
 $\Delta = 0^{\circ}04'47.0''$ (LT)
 $L = 12.523$
 $T = 6.261$
 $R = 9,000.000$
 $SE = NC$