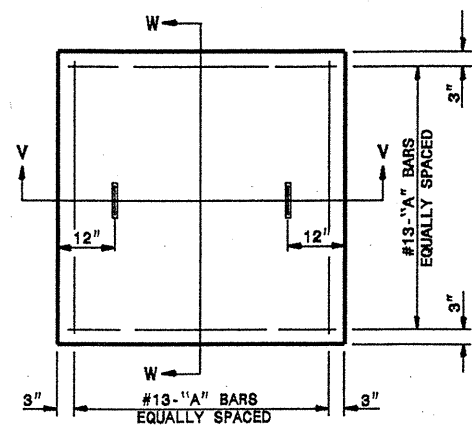
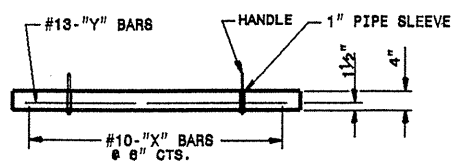


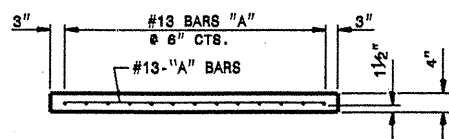
WRS ELEMENT	SHEET 22 OF 31
36765	36796
36764	3CRJ0671.5
3CR.20651.4	3CRJ0671.5
3CR.20651.11	3CRJ0711.5
38225	39251
3CR.20651.5	39254
3CR.306532.5	39256
3CR.306508.5	



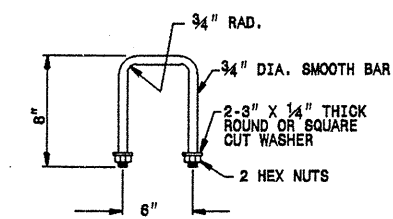
PLAN
PRECAST OR CAST IN PLACE TOP SLAB



SECTION V-V



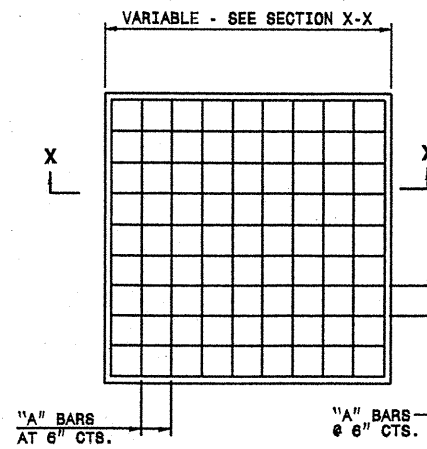
SECTION W-W



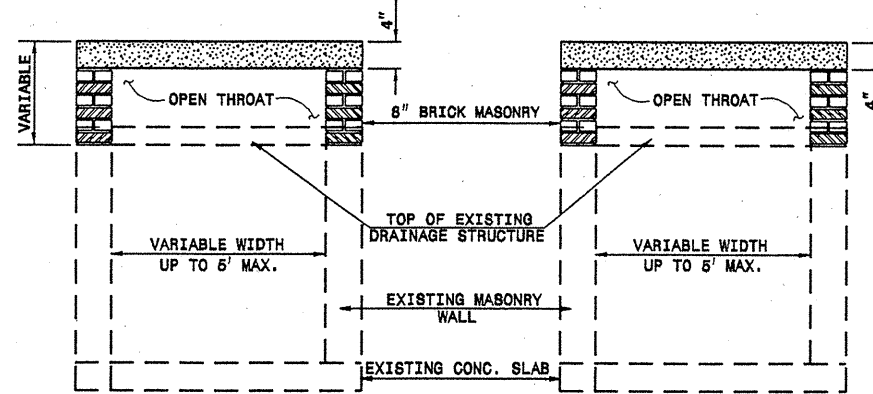
DETAIL OF HANDLE



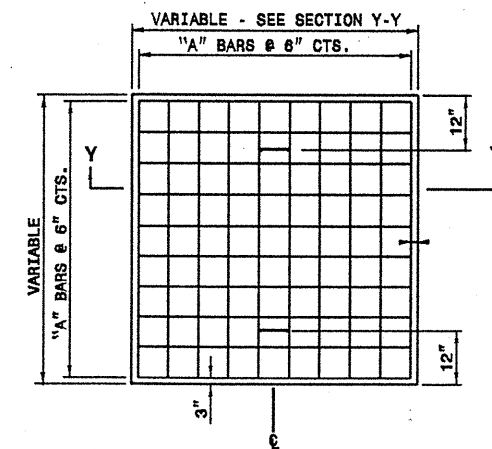
PART SECTION
THRU COVER SHOWING HANDLE



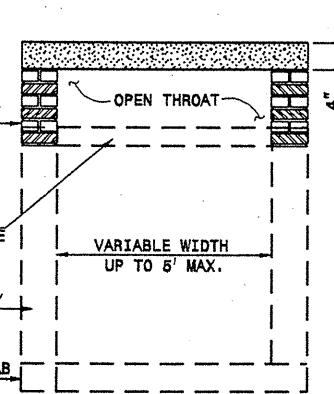
PLAN



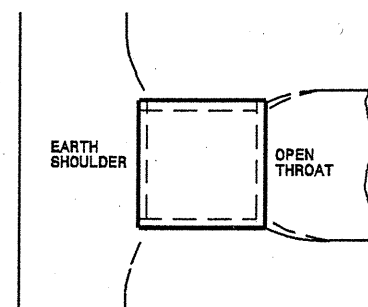
SECTION X-X



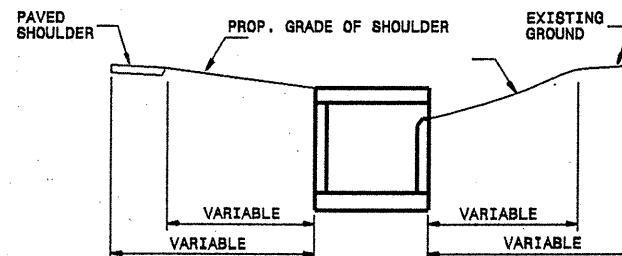
PLAN



SECTION Y-Y



PLAN OF CATCH BASIN



SECTION OF CATCH BASIN

DETAIL SHOWING METHOD OF PLACING CATCH BASIN AND PAVED SHOULDER GUTTER IN MEDIAN STRIP

GENERAL NOTES:

CONSTRUCT IN ACCORDANCE WITH SECTION 859 OF THE STANDARD SPECIFICATIONS.

THE DIMENSIONS FOR THE EXISTING BOXES ARE APPROXIMATE AND MAY VARY SLIGHTLY.

DETAIL INTENDED FOR NON-TRAFFIC BEARING DRAINAGE STRUCTURES.

BILL OF MATERIALS				
REINFORCING STEEL				
CODE	SIZE	QTY.	LENGTH	REINF. STEEL lbs.
A	#13	20	56"	62
TOTAL				62 *
MASONRY				CY
TOP SLAB CONCRETE CLASS "B"				0.2889 *
BRICK MASONRY PER m HT (MIN)				0.0146

* NOTE:
QUANTITIES BASED ON 42" X 42" DRAINAGE STRUCTURE. ADJUST QUANTITIES FOR LARGER STRUCTURES.

DESIGN SERVICES UNIT
STANDARDS AND SPECIAL DESIGN
Office 818-250-4128 FAX 818-250-4119

DETAIL TO CONVERT
EXISTING DROP INLET TO
OPEN THROAT CATCH BASIN

ORIGINAL BY: I.S. Small DATE: 8-12-02
MODIFIED BY: DATE:
CHECKED BY: DATE:
FILE SPEC.: w:\s1111\mex111\0910\openthroat\091111.dwg

20-SEP-2004 09:02 C:\RD\DOC\REF\AT.2005\CONTRA-1\36765E-1\36765ETC.dgn