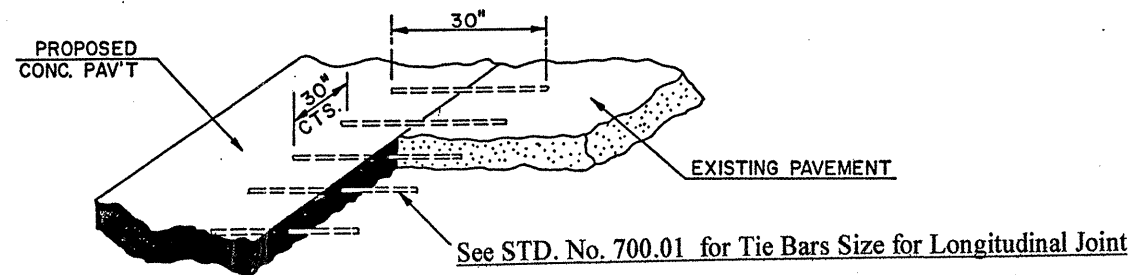
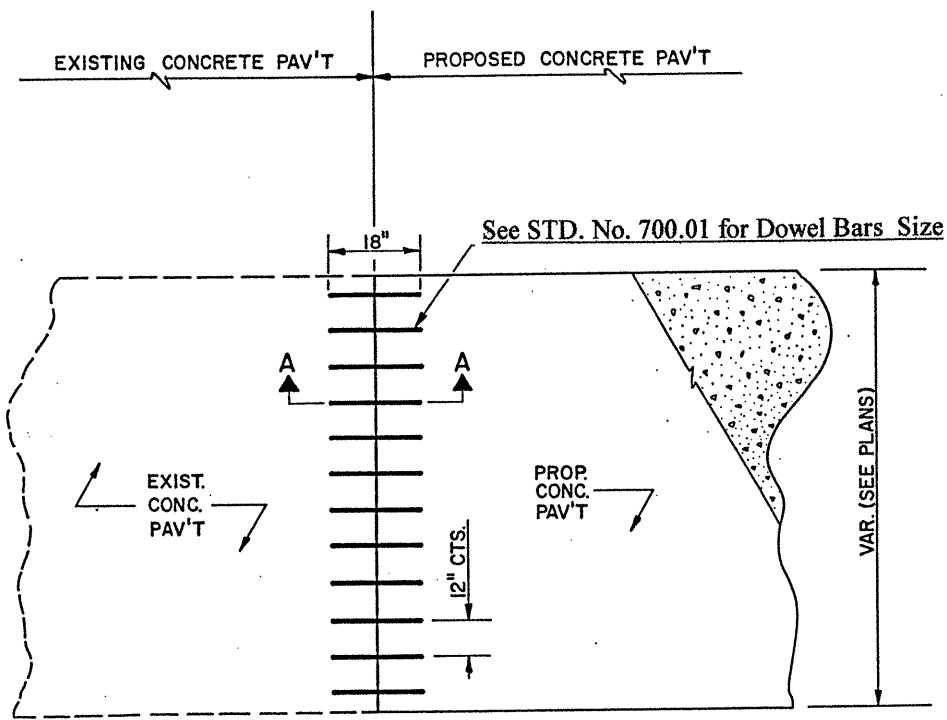


**PARTIAL CROSS-SECTIONAL VIEW
SECTION A-A**

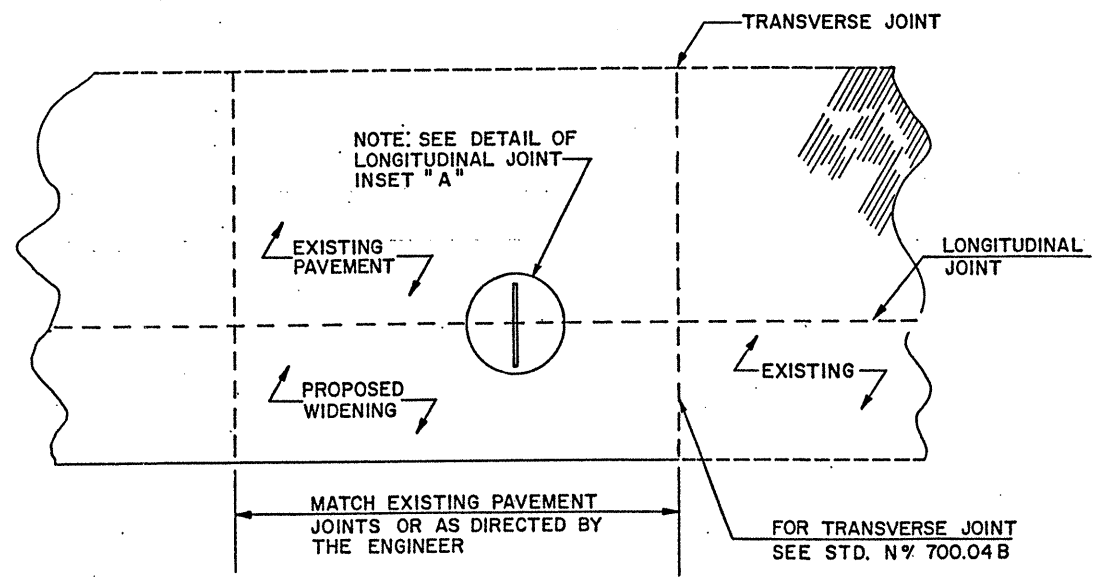


PROPOSED TIE BARS RENDERING

See also STD. No. 700.05



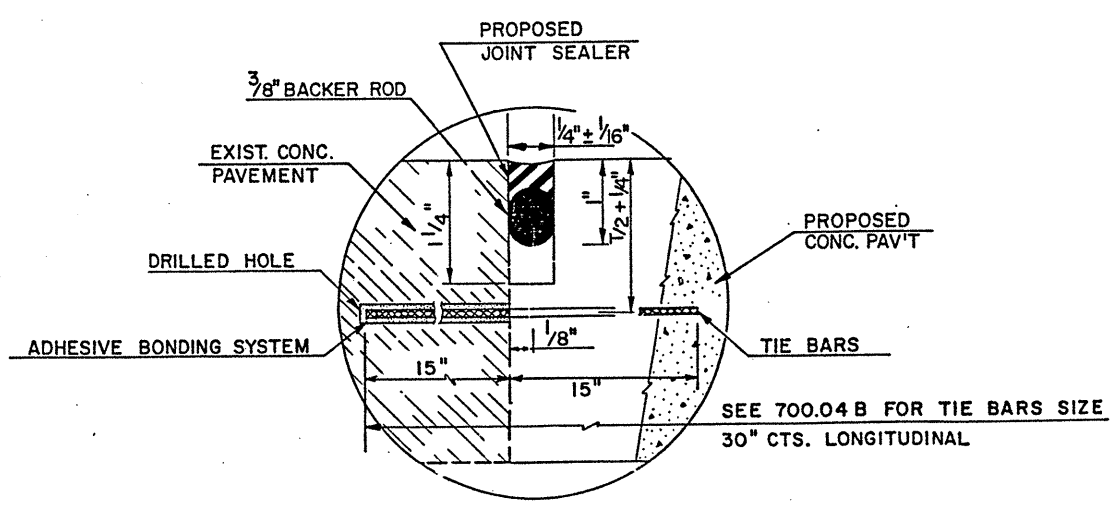
**PLAN
(FOR TRANSVERSE JOINT)**



PLAN VIEW OF JOINT

GENERAL NOTES:
SEE SPECIAL PROVISIONS OR STANDARD SPECIFICATIONS FOR REQUIREMENTS RELATIVE TO JOINT CONSTRUCTION AND PAVEMENT REPAIR.

THE CONTRACTOR SHALL USE AN ADHESIVE BONDING SYSTEM: THE MASONRY ANCHORING PRODUCTS BY KELKEN-GOLD, INC., THE PARABOND CAPSULE ANCHOR BY THE MOLLY FASTENER GROUP, THE ANCHORAGE SYSTEM BY HILTI, THE SUP-R-SET CAPSULE ANCHOR BY DIAMOND, INC., OR AN APPROVED EQUAL TO ATTACH THE DOWEL TO EXISTING CONCRETE PAV'T AND SET INTO HOLES DRILLED 1/4" DIA. AND 1/4" LONGER IN LENGTH THAN REBARS AND HOLES CLEANED OF DEBRIS. THE HOLES SHALL BE PREPARED AND THE DOWEL SET IN CONCRETE IN ACCORDANCE WITH THE MANUFACTURER'S RECOMMENDATION. AFTER INSTALLATION, THE ADHESIVE BONDING SYSTEM USED SHALL BE CAPABLE OF RESISTING A PULL OUT LOAD OF 5,000 LBS. PER FOOT.



INSET "A" DETAIL