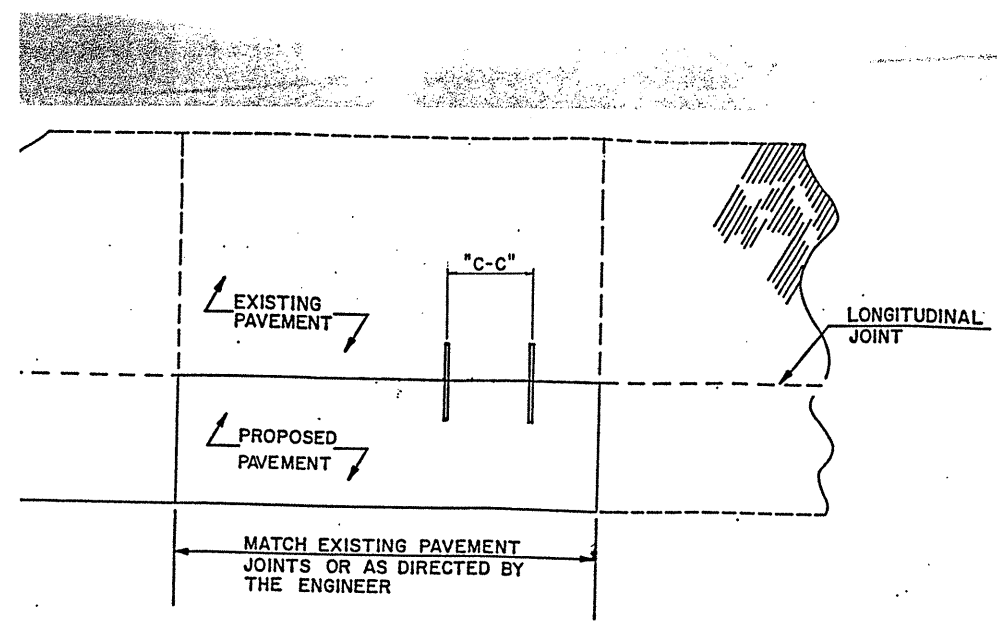
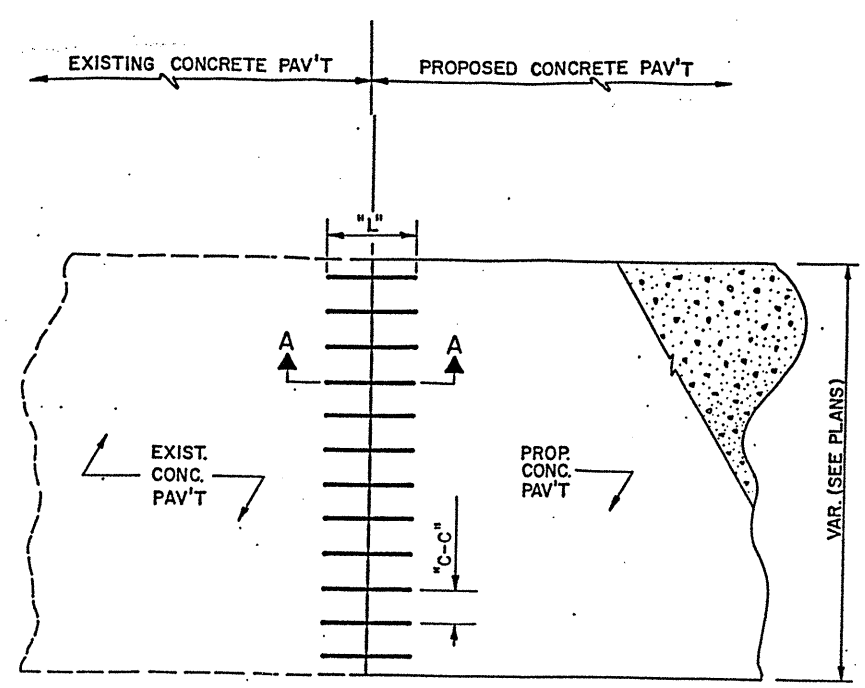


PROJ. REFERENCE NO.	SHEET NO.	TOTAL SHEETS
STATE PROJ. NO.	F.A. PROJ. NO.	DESCRIPTION
WBS# 39547.3.1		



PLAN
(FOR LONGITUDINAL JOINT)
(AND CONSTRUCTION JOINT)



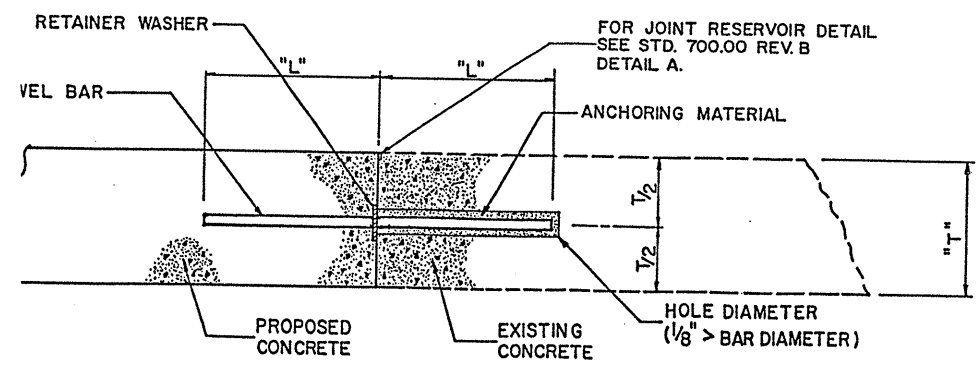
PLAN
(FOR TRANSVERSE JOINT)

BAR	"L"	"T"	"C-C"	O.D.	I.D.

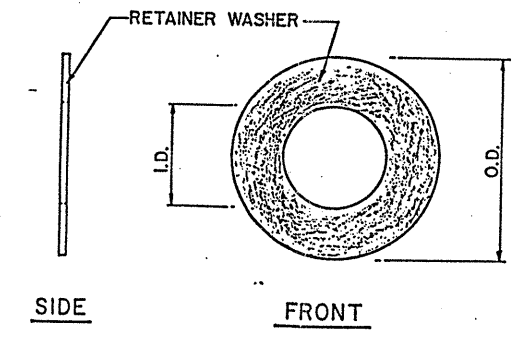
GENERAL NOTES:

- (1) THE CONTRACTOR SHALL USE AN APPROVED ANCHORING MATERIAL CAPABLE OF RESISTING A PULL OUT LOAD OF 5000 LBS. PER FOOT AFTER INSTALLATION OF THE BARS.
- (2) BAR HOLES SHALL BE DRILLED WITH A PNEUMATIC DRILL, UNLESS OTHERWISE APPROVED BY THE ENGINEER.
- (3) HOLES MUST BE CLEANED OF ALL DEBRIS, OIL, AND GREASE PRIOR TO INSTALLATION OF BARS.
- (4) THE EXPOSED PART OF THE DOWEL BAR SHALL BE COMPLETELY COATED WITH BAR GREASE PRIOR TO PAVING OPERATION.

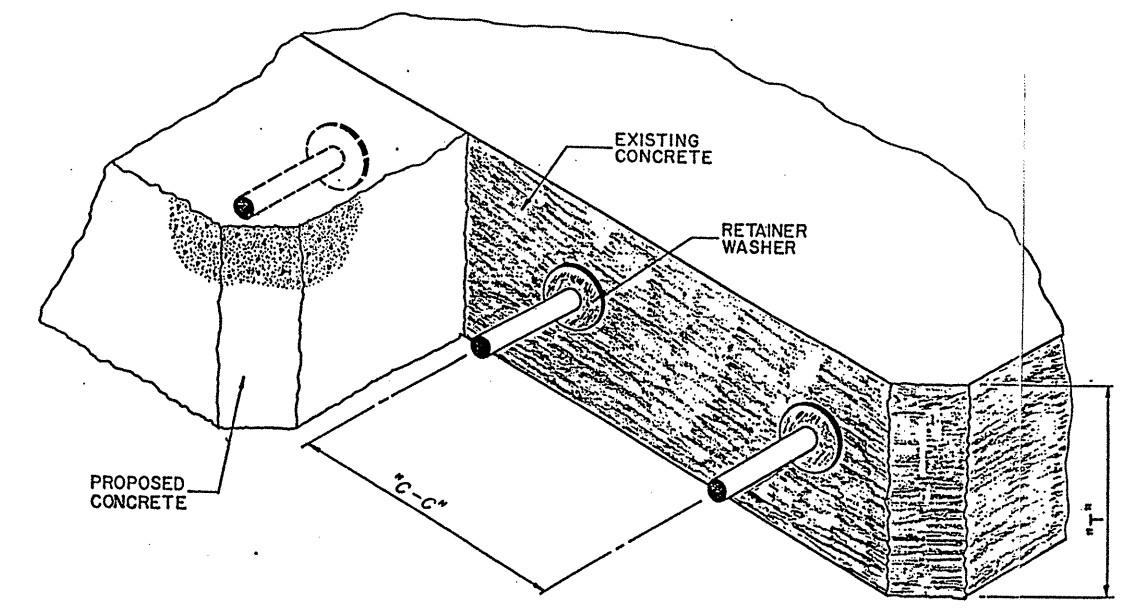
SEE SPECIAL PROVISIONS OR STANDARD SPECIFICATIONS FOR REQUIREMENTS RELATIVE TO JOINT CONSTRUCTION AND PAVEMENT REPAIR.



CROSS-SECTIONAL VIEW



RETAINER WASHER VIEW



DOVEL BARS FOR TIE AT TRANSVERSE JOINT

DESIGN SERVICES UNIT	
ROADWAY STANDARDS AND SPECIAL DESIGN SECTION	
P.O. BOX 25201	PHONE # 919-250-4128
RALEIGH, N.C. 27611	C.S. #51-31-40
DETAIL OF PROPOSED CONCRETE PAVEMENT TYING TO EXISTING CONCRETE PAVEMENT	
DRAWN BY: TLS	DATE: 3-92
CHECKED BY: John Williams	DATE: 5-27-92
FILE SPEC.: J. 6.7A	Master