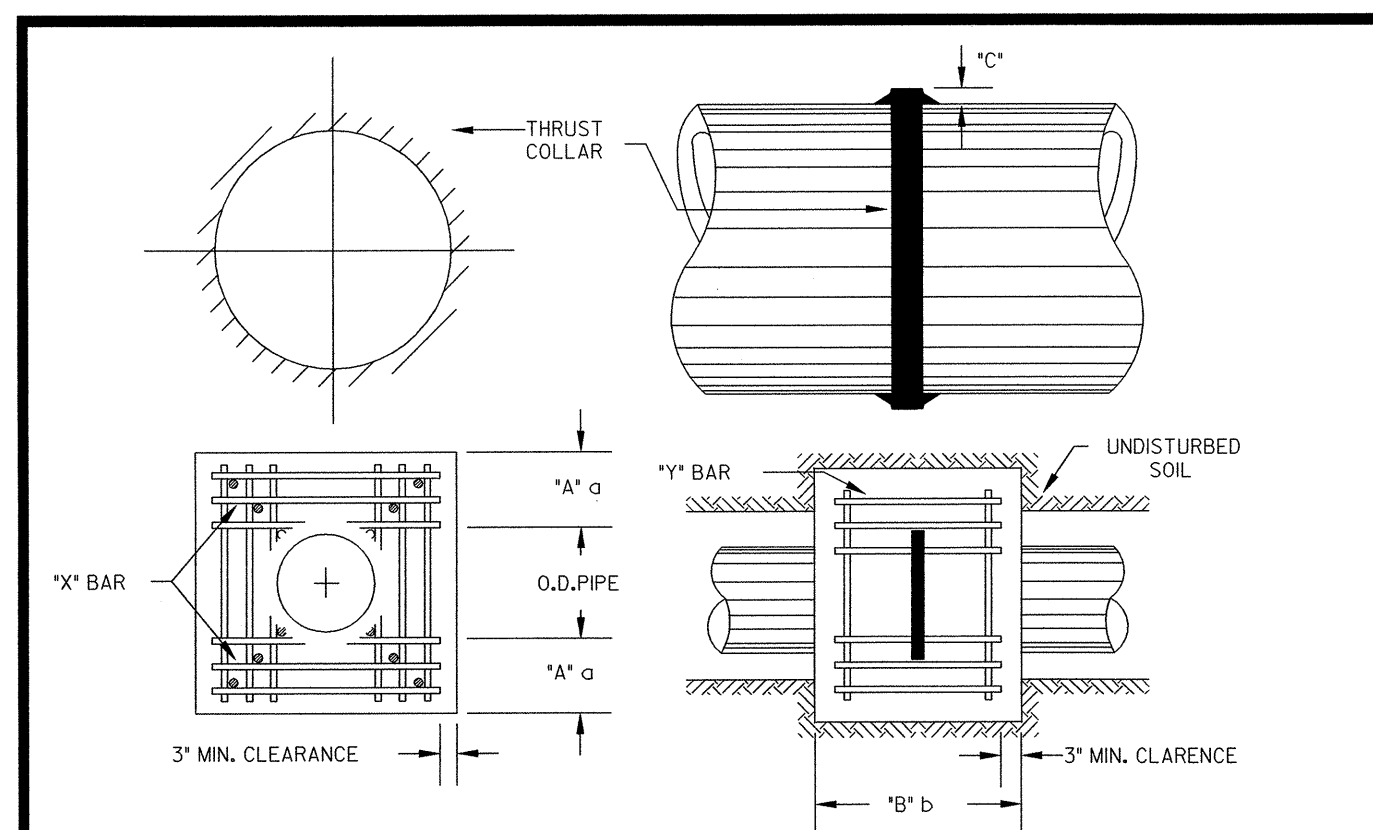




PROJECT REFERENCE NO.	SHEET NO.
B-2583	UC-2
SCALE:	UTILITY ENGINEER
NTS	
CONST. REV.	
R/W REV.	

UTILITY CONSTRUCTION



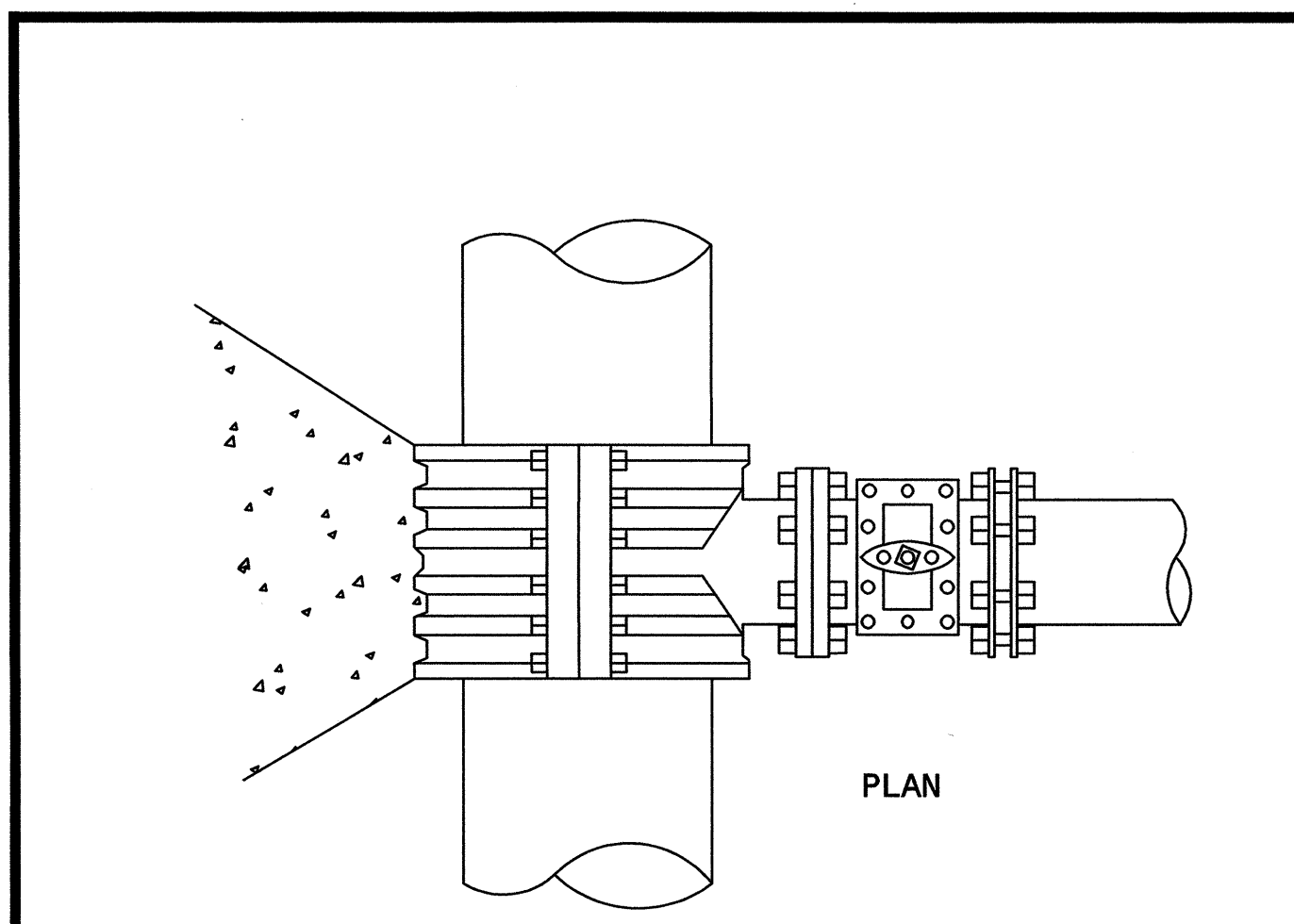
REINFORCING REQUIREMENTS

LD. PIPE	REBAR SIZE	*X* BAR LENGTH	*X* BAR WGT.	*Y* BAR LENGTH	*Y* BAR WGT.	NO. REB'D.
6"-36"	#5	2'-2"+O.D. PIPE	1.043 LBS/FT	1'-3"	1.13 LBS. EA	X-24, Y-12
48"x2"	#6	3'-0"+O.D. PIPE	1.502 LBS/FT	1'-3"	1.13 LBS. EA	X-24, Y-12

LD. PIPE	*A*	*a*	*B*	*b*	*C*	*D*	*E*	*F*	*G*	*H*	*I*	*J*
6"-36"	1'-4"	1'-0"	1'-6"	1'-6"	1'-6"	1'-6"	1'-6"	1'-6"	1'-6"	1'-6"	1'-6"	1'-6"
48"x2"	1'-8"	1'-6"	1'-6"	1'-6"	1'-6"	1'-6"	1'-6"	1'-6"	1'-6"	1'-6"	1'-6"	1'-6"

- NOTES:**
- SEE CONSTRUCTION SPECIFICATIONS FOR THRUST BLOCKING ON PVC PIPE.
 - CONCRETE SHALL BE 2500 PSI & TRANSIT MIXED.
 - REINFORCING BARS SHALL BE DEFORMED, AND TIED TOGETHER.
 - BACKFILL TAMPED IN 6" LAYERS.
 - THRUST COLLAR MUST BE FACTORY WELDED, ON BOTH SIDES.

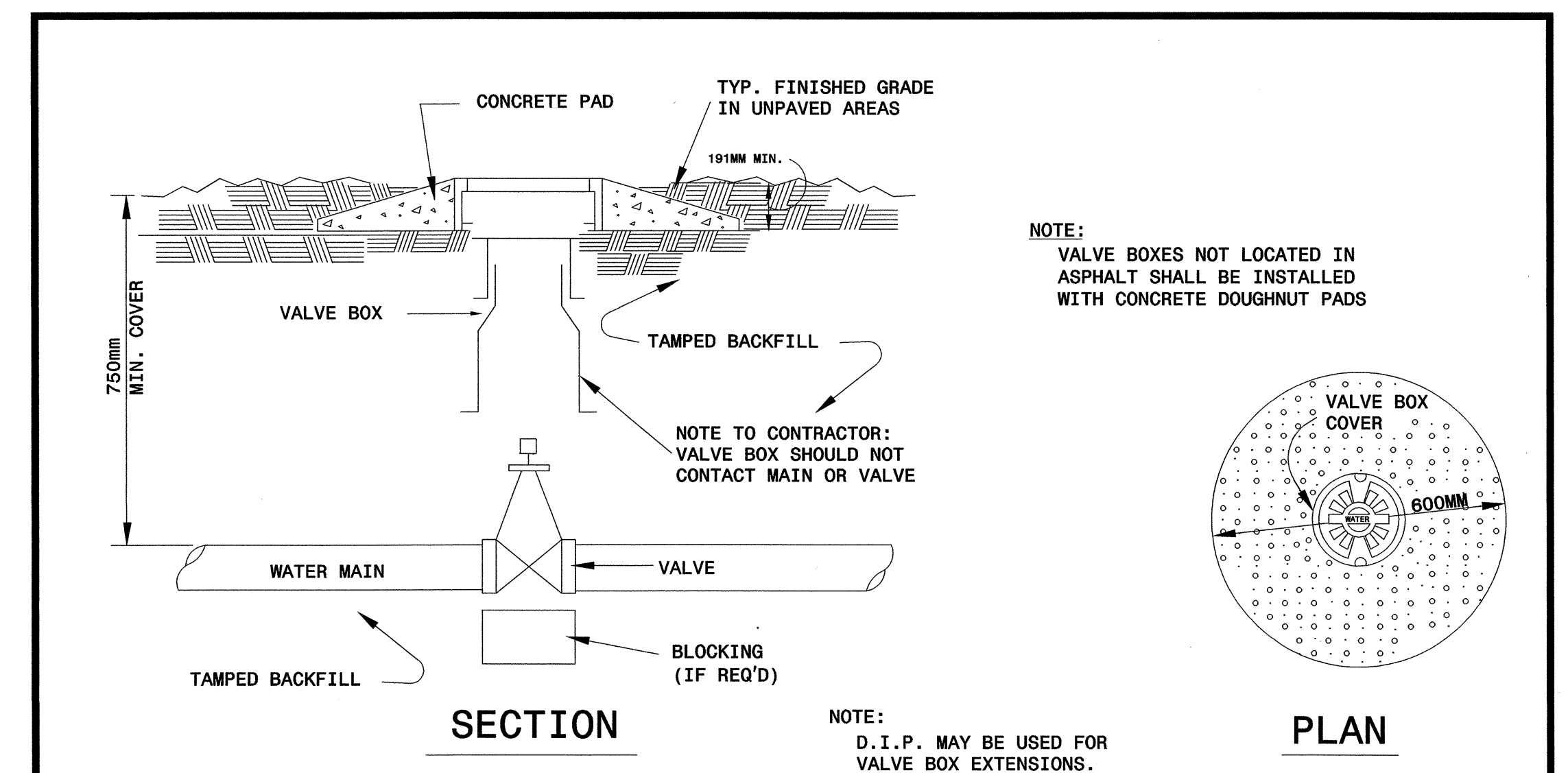
THRUST BLOCKING DESIGN DATA



- NOTES:**
- CONCRETE SHALL NOT CONTACT BOLTS OR ENDS OR MECHANICAL JOINT FITTINGS.
 - SEE STANDARD REACTION BLOCK TABLES FOR AREA OF CONCRETE REQUIRED

STANDARD TAPPING SLEEVE AND VALVE ASSEMBLY

NO SCALE



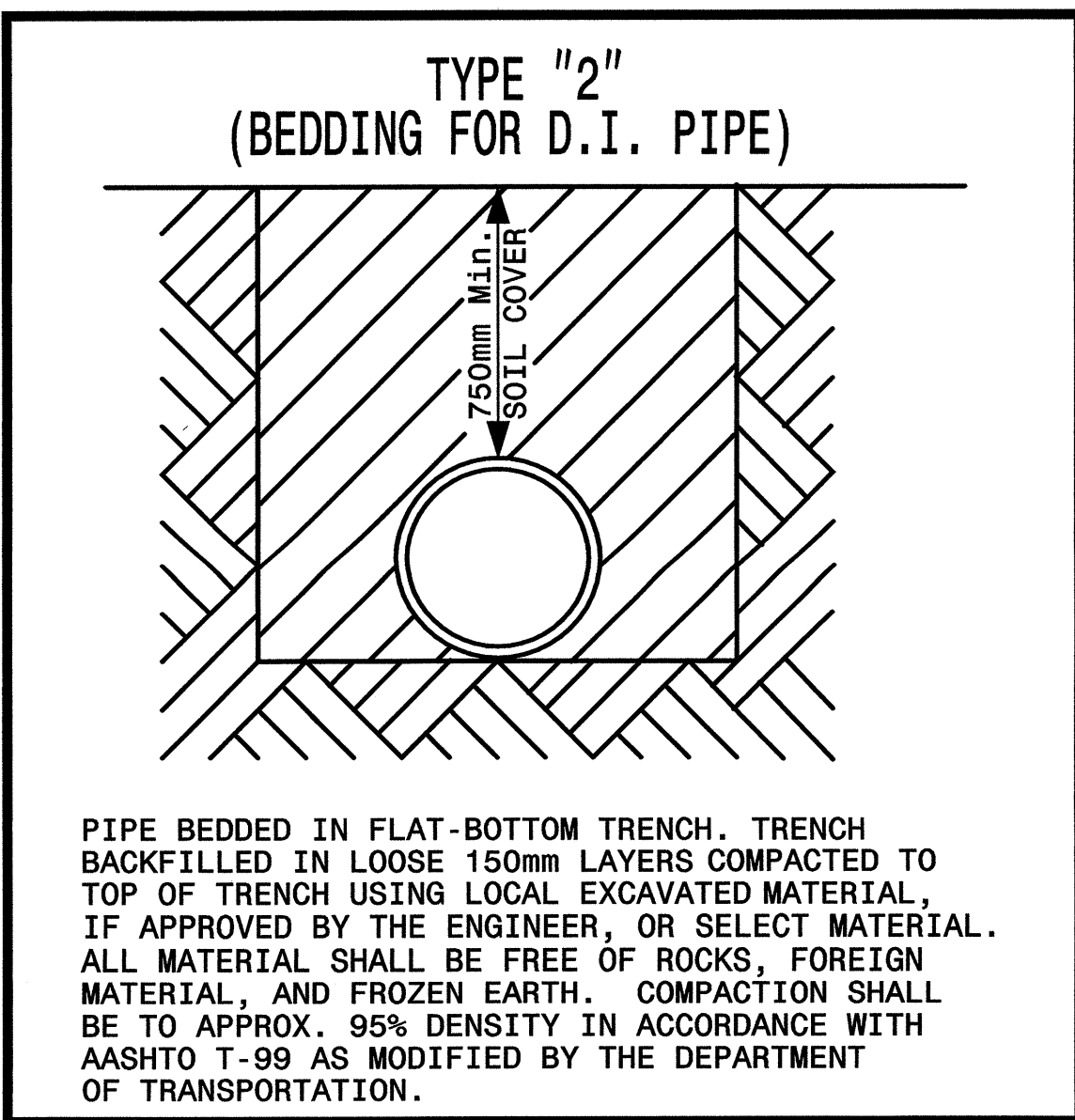
- NOTE:**
- VALVE BOXES NOT LOCATED IN ASPHALT SHALL BE INSTALLED WITH CONCRETE DOUGHNUT PADS

- NOTE:**
- D.I.P. MAY BE USED FOR VALVE BOX EXTENSIONS.

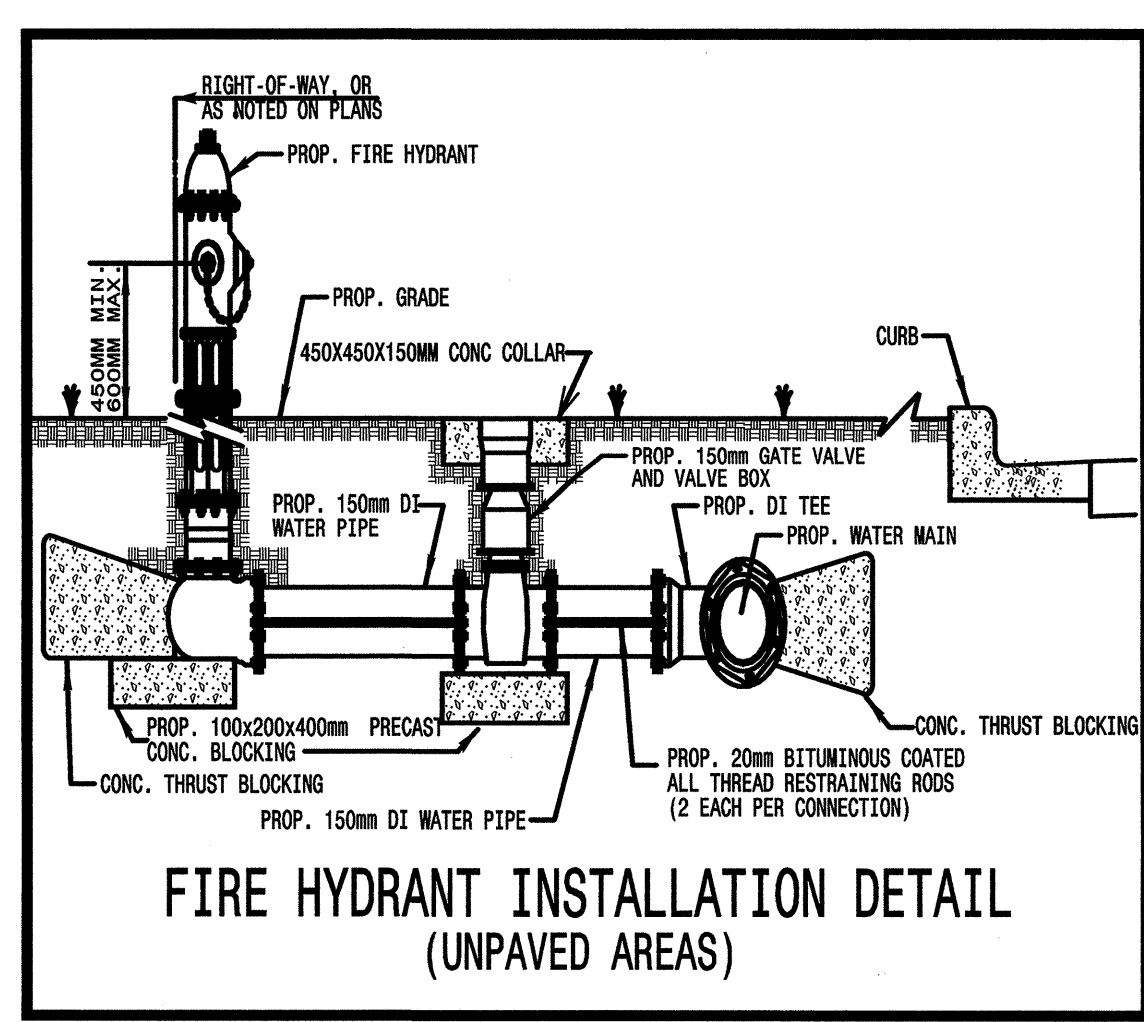
STANDARD VALVE INSTALLATION

MAXIMUM TRENCH WIDTH AT TOP OF PIPE

NOMINAL PIPE SIZE (mm)	TRENCH WIDTH (meter)	NOMINAL PIPE SIZE (mm)	TRENCH WIDTH (mm)
102	0.72	508	1.12
152	0.76	610	1.22
203	0.81	762	1.37
254	0.86	914	1.57
305	0.91	1067	1.68
356	0.97	1219	1.83
406	1.02	1400	1.98
457	1.07		



PIPE BEDDED IN FLAT-BOTTOM TRENCH. TRENCH BACKFILLED IN LOOSE 150mm LAYERS COMPACTED TO TOP OF TRENCH USING LOCAL EXCAVATED MATERIAL, IF APPROVED BY THE ENGINEER, OR SELECT MATERIAL. ALL MATERIAL SHALL BE FREE OF ROCKS, FOREIGN MATERIAL, AND FROZEN EARTH. COMPACTION SHALL BE TO APPROX. 95% DENSITY IN ACCORDANCE WITH AASHTO T-99 AS MODIFIED BY THE DEPARTMENT OF TRANSPORTATION.



FIRE HYDRANT INSTALLATION DETAIL (UNPAVED AREAS)

NOM. PIPE DIA. mm	MINIMUM CONCRETE BLOCKING (m ³) *				
	TEES & DEAD ENDS	90° BEND	45° BEND	22-1/2° BEND	11-1/4° BEND
100	0.25	0.25	0.25	0.25	0.25
150	0.25	0.25	0.25	0.25	0.25
200	0.25	0.38	0.25	0.25	0.25
250	0.51	0.57	0.38	0.25	0.25
300	0.57	0.76	0.51	0.25	0.25
350	0.76	1.14	0.57	0.38	0.25
400	1.02	1.53	0.76	0.38	0.25
450	1.27	1.78	1.02	0.51	0.25
500	1.53	2.29	1.27	0.57	0.38
600	2.29	3.31	1.78	1.02	0.51

* CONCRETE SHALL BE 20.68MPA MIX.

NOTE:

NO CONCRETE SHALL COVER BOLTS OR GLANDS.

STANDARD REACTION BLOCKING

NO SCALE